

## GLMHA (Cont.)

- 52C. OF Hart/Stev Test color liver ch 9" ASB, light cream spots all over, slight paint runs, g. \$8.00
- 53C. OF Cl Arab M, rubs. \$6.00
- 55C. OF Hart/Stev, 7" TWH m/f blue roan, reg issue. \$10.00
- 56C. OF Adios, SR dap grey. \$25.00
- 57C. OF LB QH buck, no white. \$10.00
- 58C. OF SR red bay Pacer, yel. \$30.00
- 59C. OF SR Pacers, palo/dap grey/red ch, slight rubs all. \$90.00
- 60C. RR WPH by S Sudekum, blue roan Peru Paso Geld, inspect pix only. \$35.00
- 61C. RR PAM by RASneathen, to dap mahog bay pinto NSH mare, insp pix. \$75.00
- 62J. OF Legionerio, rub/yel. \$10.00
- 68C. H-R Ped Boxer, gl, tri-eyes. \$15.00
- 64J. Malanowski, Morganglanz RR by D Preuit, to red roan QH cross, full set pix in all events by CCS/PPS. \$75.00
- 65C. OF Gl Horned Hereford Bull, slight yellow, slight rub, g-ex. \$25.00
- 66C. OF Brey Davy Crocket Rider, missing hat/knife, rub face/hds, g. \$10.00
- 67C. OF Woodgrain Clydesdale Stallion, rubs, missing woodgrain pattern where tape marks were at, otherwise good. \$50.00
- 69D. OF Cl And Stal, SR dap grey, slight rubs g, pix. \$20.00
- 70J. Rio Rondo Trad West Saddle, light brown, partial oak tool, double rigged, breastcollar, black suede seat, elastic girth. \$30.00
- 71J. Flock Run Mare/Foal palomino, w/hair, SR, g-ex. \$10.00
- 73L. OF FAF palo mat, rub/yel. \$3.00
- 73L. OF Black San Domingo "Black Gold", SR, slight rubs. \$25.00
- 74L. OF Run SHF, bay pi, rub. \$10.00
- 75L. OF CQHS, SR brown app, rub. \$15.00
- 76L. Kid Poco King, Adios/SHS RR by Linda Rivera, to dap golden buck, QH stal, live show Grand Champ in Georgia 1988, has halter pix. \$110.00
- 77:. Desert Wine, Black Stal, RR by C Potter, to park trot Arab stallion on base, dark bay, has halter pix. \$100.00
- 78D. Gleneagles Gladiator, H-R Clydesdale bay matte, ex has pix (extra postage required - add \$5.00 to base postage rate). \$125.00
- 79C. OF Black Beauty, rubs, y. \$8.00

## MODEL HORSES BY LAURIE JENSEN



Tarika and Tarik Pasha, owned by Kimberley Harvey. Tarika was the Rag Benefit Auction PAM 2 issues ago...many thanks to all of you frenzied bidders! And congratulations, Kim, on your purchase of his lovely mare.

Sorry, no more custom orders taken. For a current saleslist send SASE to: Laurie Jo Jensen, 32891 Calle del Tesoro, San Juan Capistrano, CA 92675.

## DISPERSAL SALE

Carolynn Ruth, 5015 Kester Ave., #4, Sherman Oaks, CA 91403

All models in very good condition (ear or hoof rubs from box) unless otherwise noted. Sorry, no photos. MONEY REFUNDED IF NOT SATISFIED. Time payments available. 1/3 to hold. Full payment in 60 days or deposit forfeited. Don't like the price? Make an offer! I'll make discounts for large orders.

UPS unless you request US mail. 1st model: \$2.50. \$1.00 each additional model. Orders over \$200 are shipped free.

Write for more information. Please enclose SASE with all inquiries. Enclose a 2nd large SASE to get my next sales list.

Most models are early releases and have old coloring.

FAS - gloss palo. . . \$15  
 FAM - gloss palo. . . \$15  
 FAF - gloss palo. . . \$15  
 Set: gloss palo Family Arabs(3). . . \$35  
 Western Pony - black pinto. . . \$15  
 Pacer - dark brown. . . \$18  
 "El Pastor" (small flaw in paint on belly). . . \$27  
 Saddlebred Weanling. . . \$60  
 Belgian - chestnut (couple of tiny rubs). . . \$20  
 Shire - dapple grey, early 70's (open mouth, factory flaw under paint on leg). . . \$22  
 Shire - dapple grey (Montgomery Wards). . . \$35  
 Shire - Honey sorrel (bald face). . . \$38  
 Shire - Honey sorrel (stencil face). . . \$35  
 QH Yearling - liver. . . \$28  
 QH Yearling - palo (1 rub). . . \$20  
 Welsh Pony - chest, orig. release, bald face. . . \$35  
 Western Pracer - palo (old honey color). . . \$30  
 Running mare - bay. . . \$18  
 Running foal - bay. . . \$8  
 Set: bay running mare & foal(2). . . \$24  
 Grazing mare - bay. . . \$27  
 Grazing foal - bay. . . \$15  
 Set: bay grazing mare & foal(2). . . \$38  
 Grazing mare - palomino (old honey color). . . \$27  
 Grazing foal - palomino (old honey color). . . \$15  
 Set: palo grazing mare & foal(2). . . \$38  
 POA - bay blanket. . . \$17  
 Rearing stallion - alabaster. . . \$12  
 Rearing stallion - palomino. . . \$12

Carolynn Ruth...con't

Bucking bronco - black. . . \$35  
 "Old Timer" - white, w/hat. . . \$20  
 PAS - mahogany bay w/"hair marks," semi-gloss (1  
 nose rub). . . \$35  
 PAM - mahogany bay. . . \$30  
 PAF - mahogany bay. . . \$22  
 "Hobo" (1 rub). . . \$35  
 Polo Pony. . . \$35  
 Lippizan. . . \$20  
 "San Domingo". . . \$20  
 Belgian - red roan (special). . . \$65  
 Stock stallion - black pinto, one sock. . . \$25  
 "Justin Morgan". . . \$13  
 Azteca. . . \$20  
 "Morganlanz". . . \$20  
 "Stud Spider". . . \$20  
 Scratching foal - black appaloosa. . . \$10  
 Lying foal - appaloosa. . . \$8  
 Pacer - black (special). . . \$35  
 QH geld - red chest (special). . . \$15  
 Haflinger - grey M&T, white sox (special). . . \$15  
 Haflinger - grey M&T, grey sox (special). . . \$15  
 Stock stallion - grey app (special). . . \$30  
 Stock mare - grey app (special). . . \$30  
 Standing stock foal - grey app. . . \$8  
 Action stock foal - grey app. . . \$8  
 Set: grey app stock family (4). . . \$70  
 "Halla". . . \$35  
 5-gaiter - woodgrain (scratched up). . . \$45  
 Running stallion - white (yellow spot from ribbon sticker). . . \$50  
 Fighting stallion - woodgrain, very dark. . . \$70  
 Running mare - alabaster (very white). . . \$60  
 Running foal - alabaster (very white). . . \$30  
 Set: Buckskin Lady Phase & Foal(Xmas special)(2) (rub on mare's nose)  
 Mustang - grey appaloosa (yellowed). . . \$85 . . . \$55  
 FAS - gloss alabaster, beautiful grey shading on face (some yellowing)  
 QH gelding - gloss bay (tiny scratches, open mouth). . . \$65 . . \$13  
 FAF - woodgrain (rubs on: hip, ears, eye, tail). . . \$20  
 Unpainted stock mare. . . \$20  
 Thoroughbred mare & foal - bay and chestnut(2). . . \$40  
 Chestnut app performance horse (special) (small rub on nose). . . \$22  
 "Black Beauty" - traditional, 1 stocking. . . \$15  
 FAS - matte bay (brownish). . . \$20  
 FAM - matte bay (reddish). . . \$20  
 FAF - matte bay (brownish). . . \$10  
 Set: matte bay Family Arabs(3). . . \$45

At Auction:

Black mustang SB. . . \$70  
 Woodgrain shetland - with gold "Tenite" sticker SB. . . \$100

Bidding Closes: December 2, 1989 at 12:00 noon PST. Send SASE for  
 updates of bids.

# Scarlet Royal



All Models are Original Finish and in perfect condition (unless stated otherwise). Please send all inquiries with an SASE to SRS Sale c/o Tracy Crawford, 3606 Texas Ave., Simi Valley, CA 93063. Will trade for any Decorators, Arab Woodgrains, Canterng Welsh Ponies and PAS in exc. cond.

- LOT 1: Beautiful bay TB Mare and chestnut Nursing Foal (#3155). Best offer over \$50.00  
 LOT 2: Black Grazing Mare (#143). One I said I'd never sell. Best offer over \$75.00  
 LOT 3: Black Grazing Foal (#153). Has same markings as the mare above. Best offer over \$45.00  
 LOT 4: Super glossy palomino Fighting Stallion. Color is almost tan with a creamy mane and tail (has small chip on left side - hardly noticeable). Best offer over \$40.00  
 LOT 5: Glossy palomino 5-Gaiter. Color is orange with yellow and red ribbons (has a streak of green paint? on tail). Champion photo shower. Best offer over \$40.00  
 LOT 6: Scratching Foal. Black Appaloosa (you ask, "What's so special about that?") It is the only blk app I've seen with a blanket that is barely visible. YES, IT IS AN O.F. Best offer over \$20.00

## ALSO FOR SALE

Everything must go. With college starting, I NEED SHELF SPACE!!!!

- |     |   |     |  |
|-----|---|-----|--|
| 4   | FAS - palomino, vg - \$20.00            | 815 | FAM, bay, xc - \$22.50                   |
| 5   | FAM - palomino, vg - \$17.50            | 816 | FAF, bay, xc - \$9.50                    |
| 6   | FAF - palomino, vg - \$8.50             |     | FAS, charcoal, ok - \$17.50              |
| 47  | Man O'War, xc - \$22.50                 |     | FAM, charcoal, npo - \$5.00              |
| 48  | Black Morgan, xc - \$22.50              |     | FAF, charcoal, ok - \$7.50               |
| 59  | Morganglanz, xc - \$25.00               |     | Western Horse, black pinto, ok - \$12.50 |
| 67  | San Domingo, xc - \$25.00               |     |  |
| 69  | Smoky the Cowhorse, xc - \$35.00        |     |  |
| 80  | Clydesdale Stallion, vg - \$17.50       |     |  |
| 83  | Clydesdale Mare w/blanket, xc - \$22.50 |     |  |
| 84  | Clydesdale Foal w/blanket, xc - \$12.50 |     |  |
| 90  | Phar Lap, vg - \$25.00                  |     |  |
| 124 | Running Mare, bay, xc - \$22.00         |     |  |
| 134 | Running Foal, bay, ok - \$8.00          |     |  |
| 174 | Indian Pony, vdk bay app, vg - \$35.00  |     |  |
| 210 | Unicorn, vg - 27.00                     |     |  |
| 233 | SHM, black app, old mold, vg - \$45.00  |     |  |
| 416 | Spanish Barb, xc - \$20.00              |     |  |
| 455 | Roy Belgian Drafter, xc - \$25.00       |     |  |
| 703 | Blanket Appaloosa, xc - \$17.50         |     |  |
| 710 | American Indian Pony, xc - \$20.00      |     |  |
| 802 | Fade to Grey, xc - \$22.50              |     |  |
| 807 | SHS, paint, xc - \$22.50                |     |  |
| 808 | SHM, paint, xc - \$20.00                |     |  |
| 809 | SHF, paint, xc - \$9.60                 |     |  |
| 814 | FAS, bay, xc - \$22.50                  |     |  |

## SPECIAL RUNS

1. JAH Running Stallion sorrel #184 out of 1,500. Registered with MARC#811 as Ziyadah El Masri by Shaker El Masri our of Casandraa. \$45.00
2. SEARS PAM and PAF in red sorrel and white pinto. MARC registered as SEM Masque (Excaliber x Masquerade) and Masquerade (Shaker El Masri x Scarlotta). SET \$40.00
3. Penney's Indian Pony dun colored. \$25.00
4. Penney's Justin Morgan in sorrel. \$25.00
5. Penney's Black Stallion in bay also MARC reg. SR ALI JAMAAL (Shaker El Masri x Baskalany). \$25.00
6. Classic USET dapple grey horse, xc. \$10.00
7. Stablemates: bay Morgan Stallion, Swaps, dapple grey Draft Horse (have 2) - \$4.25 each

HOPE YOU FIND SOMETHING YOU LIKE

**WANTED WANTED WANTED WANTED WANTED WANTED WANTED WANTED**

Overworked, out-of-touch magazine editor is desperately seeking TOP-NOTCH live show quality tack. Especially need complete Western set, plus cutback saddle and really nice huntseat saddle and bridle. PLEASE send me your lists, (either new or used tack) - stamp will be refunded. Kay Fowler, 160 Stony Bank Rd., Glen Mills, PA 19342. Please write "TACK" on envelope.

WANTED: Brown or tan pinto Fury, black FAM, black West Horse, palo pinto West Horse, woodgrain QH Gelding. Hagen-Renaker Roan Lady, Love, Thunder, Heather, Yearlings, Kelso, Colliers. Border Fine Arts Welsh Stallion. Large sales list available for SASE. Lani Keller, 20049 Dorothy St., Canyon Country, CA 92351. New models weekly.

WANTED! DEAD OR ALIVE! Sherman Morgan, Azteca, Classic TB's & Arabs. Fighting/Rearing Stallions, Roy, PAM, PAS, Sham, PAF, Stock Foals, Lady Phase, Stud Spider, Halla, Legionerio, Classic Andalusian Stallion & Foal & Mustang Family for RR. Write Kimberley Harvey (address elsewhere). Stamp refunded if I buy.

WANTED: Maureen Love Originals. Will buy or trade for reworked models by myself. Laurie Jensen, 32891 Calle del Tesoro, San Juan Capistrano, CA 92675

**MISCELLANEOUS MISCELLANEOUS MISCELLANEOUS MISCELLANEOUS**

MODEL HOBBY REFERENCE LISTING; (MHRL) a list of clubs/newsletters/pamphlets and their addresses for your information. Free for large SASE: Doris Rau, P.O. Box 766, North Fork, CA 93643.

If you are looking for a great all-around club, then the NORTH AMERICAN MODEL SHOWERS ASSN. (NAMSA) is for you. It offers a large class list for beginners and seniors, and all breeds can show. For more info, send a large SASE to: Jean Derench, PO Box 466, Methuen, MA 01844

DIXIE TACK SHOP - Live Show Quality Western Model Horse Tack. Send 25¢ and SASE for our new tack pricelist w/photo's. New braided items - halters, bridles; Circus costumes and other accessories. New LB size tack, too. Lee Francis, PO Box 549, Rochester, PA 15074

WAGONS BY COTTRELL! Model wagons from scratch (not kits!) and model horses flocked or plain, according to order. A variety of harnesses and saddles. For info, send SASE to: Charles and Bernice Cottrell, 4631 Midway Dr., NW Dept TMR, Cedar Rapids, IA 52405

Scarlet Royal is proud to announce a new all Arabian registry and club for collectors who enjoy showing off their models and winning awards. With already 300+ Arabians registered, 1990 will be an even better year. For more info about this great club, send SASE to: Scarlet Royal ACR, 3606 Texas Ave, Simi Valley, CA 93063

HUMBOLDT LIVE SHOWER'S CLUB Open to all folks in California. Live shows held exclusively in Arcata/Eureka/McKinleyville area. \$3 per year includes quarterly newsletter. For more information contact: Melissa J. Kirk, 1935 H Street, Apt 12C, Arcata, CA 95521 (Please include a SASE!)

GOT THE NEW SHOWER'S BLUES? Get rid of those blues - order YOUR copy of THE MODEL HORSE SHOWER'S GUIDE \$7.50ppd. 71 pages PACKED w/info PLUS 66 bl/wh photos & many illustrations. AND there's the HOW-TO GUIDE, \$8.50 ppd. Nearly 100 pages packed w/info on rep/rem/hr, photography and MORE! REBECCA HILEMAN, PO Box 518, Conway, AR 72032

LOST--LOST--LOST--LOST! I badly need the current addresses of these showers, please help if you know their whereabouts, postage will be refunded. JUDY POPE (CO), LAURA BOYETT(VA), FARA SHIMBO(CO), JANE CHAPMAN(MN), CAROLINE GARCIA(CA), & MARINA GORMAN (PA). Cynthia Gardner, 22245 Montgomery, St., Hayward, CA 94541

Country gifts for yourself or a friend: We have the gift for you! T-shirts, books, brasses, model horses of many kinds, belt buckles, rubber stamps, jewelry, porcelain horses and more! Send \$1.00 (refundable with first order) to THE NEAR HORSE, Box 522, 420 Springfield Rd., Somers, CT 06071 (203)749-0061

If you're reading the RAG, we KNOW you like an ALTERNATIVE. So we bet you'll LOVE the MOB. The Model 'Other Breed' Cib is THE most progressive & innovative club around, catering to 250+ rare or uncommonly shown breeds. Drop us a business SASE for the full scoop. MOB, 707 Rebecca, Sioux City, IA 51103



*The American Model Horse Collector's Digest*



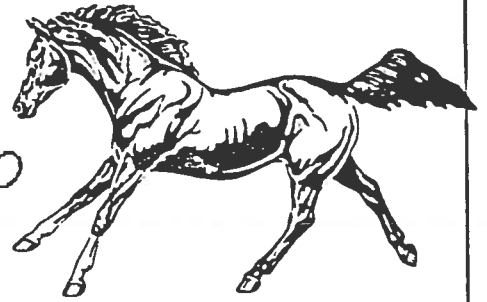
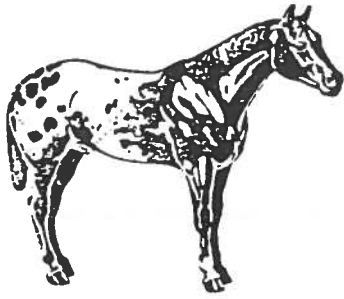
WHERE WILL YOU FIND THE UNBEATABLE COMBINATION OF: Shows (LOTS of shows), Ads, ads, and more ads, PLUS articles on How-To's, Judging, Showing, and more, reasonable ad & subscription rates.....

THE AMERICAN MODEL HORSE COLLECTOR'S DIGEST

What's MORE, the AMHCD is mailed out by FIRST CLASS MAIL! No waiting weeks and weeks for bulk mail delivery!

Try a sample issue, or go ahead and subscribe NOW! You don't know what you're missing!  
 SAMPLE ISSUE: \$3.50 1 Year subscription (7 issues): \$14.70, or 4 issue Subscription: \$8.40 U.S.  
 Canadian Rates: \$15.30 per year, or \$8.75 for 4 issues.

AD rates: Available on request for SASE.  
 SEND SUBSCRIPTION/SAMPLE ISSUE ORDERS TO: Rebecca Hileman, PO Box 518, Conway, Ark. 72032



BLACK HORSE VIDEO  
presents

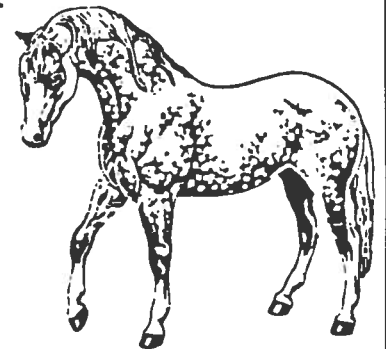
# THE BREYER COLLECTOR'S VIDEO

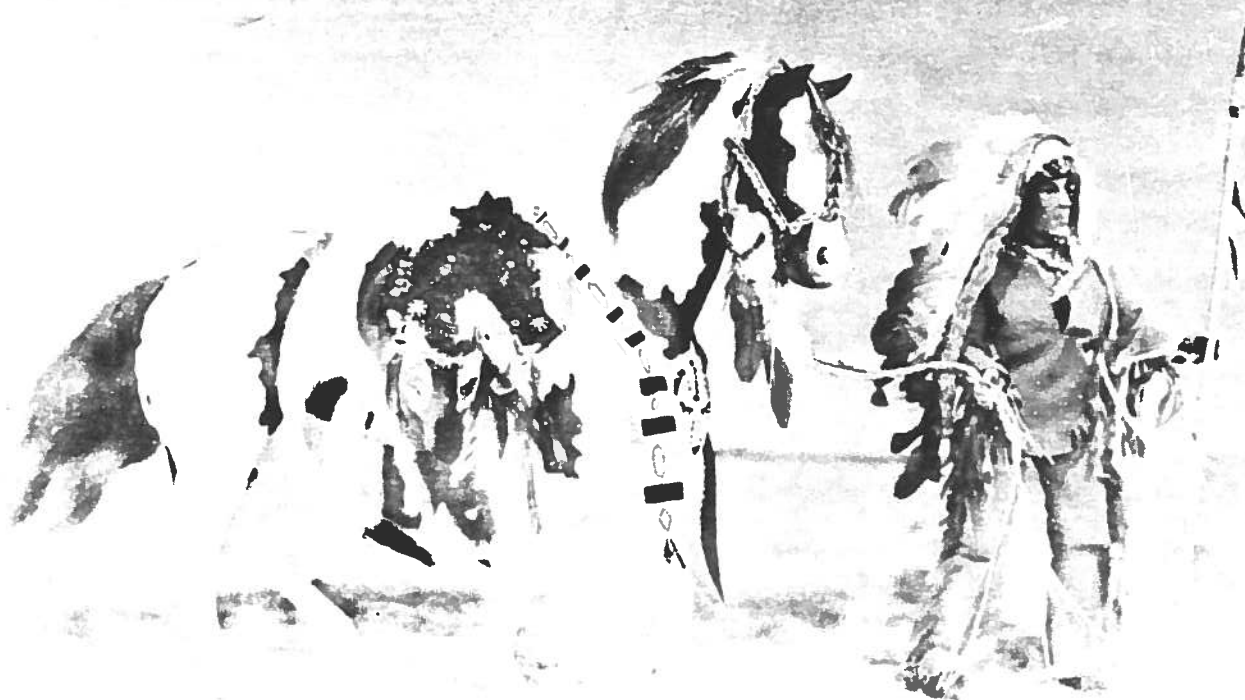
A comprehensive video listing of all current and discontinued Breyer models, including Decorator series, woodgrains, animals, special runs, and common variations. Each model shown has model info and model number given. Video comes with a guide of models listed with their manufacturing dates. This is a two hour videotape.

Cost of this professional videotape is \$25.00,  
plus \$2.00 UPS shipping.

send to:

BLACK HORSE RANCH  
10400 Johanna Avenue  
Shadow Hills, CA 91040





### DIAMOND WILDFIRE

Paint mare remade and owned by Double Diamond Ranch. She is a multi-champion in photo shows and has also won championships in live shows.

Double Diamond Ranch has live show quality and authentic looking tack for sale. Just send a SASE for free sales list.

We are also the home of Model Horse World, a club with over 700 members. It has it's own newsletter too. Send a SASE for information on this great club.

Hair for your models in white, black, mixed grey, flaxen and reddish chestnut. Price is \$1.00 for each foot plus two stamps per order up to four feet of hair. For larger orders, add one additional stamp for every two feet of hair, for postage and handling.

Now in it's 3rd printing, the **BASIC GUIDE TO SHOWING MODEL HORSES** by Kathleen Maestas. Christine Gibbons of the Denver Model Horse Collector's Club had this to say about the book: "This book has lots of super photos and is very informational. It has tons of good tips for beginner and pro alike. I've read it 5 times already and find something new each time I read it. Let Kathleen share her wide vast knowledge with you. I highly recommend this book. Rating 100+ + + + +!"

## **DOUBLE DIAMOND RANCH**

HOME OF THE MAESTAS ORIGINALS



*Kathleen Maestas*

808 W. MAPLE FARMINGTON, N.M. 87401  
PHONE 505 325-7760



# The Hobby Horse News

## One Of The Best Model Horse Publications

It was one year ago when we decided there was a need for a full-size, professionally printed model horse magazine. It took a lot of hard work, but last December our first issue was printed. Today, six issues later, we are printing 600 copies! We would like to thank all of you who have supported us in our first year!

If you don't receive *The Hobby Horse News*, you don't know what you're missing! Each issue is jam-packed (approximately fifty-six 8-1/2" x 11" pages) with informative articles, regular columns by some of the top showers, and plenty of clear, quality photographs—usually more than 40! Oh yes, don't forget the ads...show ads, for sale ads, and a real "classified" classified section—no more searching through all the classifieds for the item you seek!

On top of all this, *The Hobby Horse News* is designed by graphic experts (my husband and me). We are printed by a commercial printer, and strive to publish the best-looking magazine we can. You won't find yourself straining your eyes to read faded-out copy, and you will not believe the quality of our photographs! And get this...it's **on time!** What more could you ask for?

### But don't take our word for it!

Listen to what our readers have told us:

*"I am very (that's VERY) impressed with THHN—the hobby will benefit from such a great magazine!"—Lee Francis, Dixie Tack*

*"I got the last issue of THHN and I LOVE it!!! It's just fabulous! Keep up the great work...the hobby is really indebted to you for such a great publication!"—Sarah Minkiewicz, top remake artist*

*"Thank you very much for the sample issue of your absolutely wonderful magazine! It is the best model publication I've ever seen, without any question...Let me give you a grand round of applause for this dream come true!"—Janet Piercy, The World of Model Horses*

### Still not convinced?

Well, send for your sample issue today to see for yourself why everyone's talking about *The Hobby Horse News!*

Sample Issue: \$3 US, \$4 Canada and Mexico, \$5 any other country  
Full-Year Subscription (6 issues): \$16 US, \$22 Canada and Mexico, \$40 any other country  
Payment must be in US funds drawn on a US bank.

Name \_\_\_\_\_

Street \_\_\_\_\_

City/State/Zip \_\_\_\_\_

Mail To: *The Hobby Horse News /THR*  
815 W. Pensacola St., UNIT 3  
Tallahassee, FL 32304





TO ALL HAGEN-RENAKER HORSE COLLECTORS !!!!!!!

The Hagen-Renaker Association Club is JUST FOR YOU!



The HRAC offers:

- Monthly point shows
- Benefit Shows
- No points to keep track of!
- Classes for both DW's & Mini's
- Year end Commercial Awards
- Subscription to The Glass Menagerie
- Latest H-R News Spring & Fall
- Sales & Auctions of H-R's
- Monthly column on DW's & Mini's
- Going on our 5th Year!
- AND much, much more...



All for only \$9.00 per year!!!!

The Glass Menagerie gets "TOP" results when you want to sell or trade your H-R's, it's the best response ANYWHERE!

If you wish a Complementary copy of our latest issue, send 1-25 stamp to the address below. (usually a single issue is \$1.00)

This Offer is ONLY valid during the month this ad runs!!! So hurry!

Send a long SASE if you wish a copy for the HRAC Rulesheet, it's free.

SHOW THOSE HAGEN-RENAKERS!!!!!!!!!!!!!!

Denise Nelson  
 7325 Larchmont Drive  
 No. Highlands, Ca. 95660



**SHOWTIME SHOWTIME SHOWTIME SHOWTIME SHOWTIME SHOWTIME**

Scarlet Royal will be holding its annual all Arabian Photo Show December 15-20 with over 60 classes and several champions to be name, it is sure to be the best yet. For class list and rules send LSASE with extra postage to: Scarlet Royal Photo Show, 3606 Texas Avenue, Simi Valley, CA 93063

Attention So Cal Live Showers! FLASH! The live show that was to be held at Laurie Jensen's house in November will be held in Carlsbad AT JOAN BERKWITZ'S HOUSE!! For more info, call Joan at 619-431-1014 or Laurie at 714-661-1116!! Also, the December show WILL NOT be a show, it will be a potluck Christmas Party (and sell/swap/gab party)!! Call Laurie for details.

Looking for an affordable show series? Well look no further! Stone Fox Stables All Halter Show Series is here! Show series starts in Nov '89 and ends July '90. SASE for classlist to: Liz Schoenbaum, 5211 Orange Grove Rd., Hillsborough, NC 27278

HOORAY! WESTERN REGIONAL CONGRESS will be held June 22-23-24, 1990! That's right, THREE days of fun, AFTER school is out for the year. The number of exhibitors will be limited this year to insure that everyone will have lots of room! Please enter early to confirm your spot...don't miss out! SASE for info to: WRC/Jensen, 32891 Calle del Tesoro, San Juan Capistrano, CA 92675

**1989 CALENDAR OF EVENTS.....LIVE SHOWS 1989**

- \* October 28-29 - Breyer World Championships - will be held in Albuquerque, NM. SASE to: Kathy Maestas, 508 W. Maple, Farmington, NM 87401
- \* November 4th - Hampton Classic Live Show. Nancy Ellis, 1101 Ashleigh Dr., Hampton, VA 23666
- \* November 11th - Art of Showmanship Live Show. Karen Gerhardt, 51 Carnegie Ct., Middletown, NJ 07748
- \* November 18th - All Halter Show at J. Berkwitz's, OF & RR
- \* December 16th - Sell/Swap/Gab party at L. Jensen's

YUCCA STABLE'S BENEFIT FOR THE HUMANE SOCIETY

Entries to: RENEE MARESKA, 4107 W. Cielo Grande, Glendale, AZ 85310

November 10-12, 1989 MARK ENVELOPE PLEASE: "H.S. BENEFIT"

Fees: \$2.00 for 50/Less photos; \$5.00 unlimited. Personal checks okay.

FULL RESULTS TO ALL ENTRIES. Certificates to all the Champs & Reserves.

Send SASE w/ enough postage for return of your photos + 1 extra unattached stamp for results.

100% of Funds raised to be donated to the Humane Society.

This show is in memorial of my mini lop bunny, Heather, who died on Sept 14. My husband and I miss her a great deal. Please help us to help animals in need, enter this show and support the Humane Society.

- |                                       |   |
|---------------------------------------|---|
| 1) RR STALLIONS                       | 21) OF STALLIONS                            |
| 2) RR MARES                           | 22) OF MARES                                |
| 3) RR GELDINGS                        | 23) OF GELDINGS                             |
| 4) RR FOALS                           | 24) OF FOALS                                |
| 5) RR ARABIANS                        | 25) OF ARABIANS                             |
| 6) RR THOROUGHBREDS                   | 26) OF THOROUGHBREDS                        |
| 7) RR MORGANS                         | 27) OF MORGANS                              |
| 8) RR SADDLEBREDS/TWH/NATL SHOWHORSE  | 28) OF GAITED (see CLASS 8)                 |
| 9) RR QUARTER HORSES                  | 29) OF QUARTER HORSES                       |
| 10) RR TRAK/HANOV/WARMBLOOD           | 30) OF TRAK/HANOV/WARMBLOOD BREEDS          |
| 11) RR APPALOOSAS                     | 31) OF APPALOOSAS                           |
| 12) RR PAINTS (TB/QH ONLY)            | 32) OF PAINTS (TB/QH only!)                 |
| 13) RR COLORBREDS (PALO,PINTO,etc)    | 33) OF COLORBREDS (PALO, PINTO, ALBINO,etc) |
| 14) RR PONIES                         | 34) OF PONIES                               |
| 15) RR DRAFT HORSES                   | 35) OF DRAFTERS                             |
| 16) RR PARTBREDS/GRADES               | 36) OF PARTBREDS/GRADES                     |
| 17) RR OTHER PUREBREDS                | 37) OF OTHER PUREBREDS                      |
| 18) RR LIPPIZAN & ANDALUSIAN          | 38) OF LIPPIZAN & ANDALUSIANS               |
| 19) RR MUSTANGS/SPAN. BARBS           | 39) OF MUSTANGS/SPANISH BARBS               |
| 20) RR FANTASY (UNICORN, PEGASUS,etc) | 40) OF FANTASY (Unicorn, Pegasus, etc)      |

Please do Not cross enter (enter more than one breed class). All horses may enter only two classes at this show.

## THE MODEL RAG ALL HALTER BENEFIT PHOTO SHOW SERIES

\* November 3-8, and our Championship show, December 1-6 (for those horses who have placed third or better in any of our previous shows - list of eligible horses below!)

\* FEE: \$2.00/stable/show, unlimited photos

\* Judge: Kay Fowler, 160 Stony Bank Rd., Glen Mills, PA 19342

\* No ribbons - These are benefits! Please enter and help support your local tacky model mag!

\* Halters not required; Headgear is O.K. Full results to all!

This is it!! One last chance to to qualify your kiddies for the Championship show in December! We have two very special, nearly patented MODEL RAG CHEAP DISGUSTING PRIZES to give to our Grand Champion and Res Grand, in December, not to mention an assortment of tacky goodies to be given AT RANDOM to whatever poor suckers are brave enough to enter! Come on down!!

### Classes

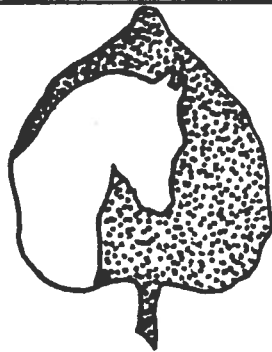
1. Stallion	14. ASB/TWH/NSH	27. OF Disc/SR Breyer
2. Mare	15. Draft breeds (pure/part)	28. OF Hartland
3. Gelding	16. Other Purebred	29. OF H-R/Beswick
4. Foal	17. Partbred	30. OF Other
5. Showmanship	18. bay/brown	31. Repaint only
6. Arab	19. black	32. Repaint/Haired
7. Pony breeds (pure/part)	20. chest/sorrel	33. R/R/H
8. Morgans	21. white/grey/dapple	34. Judge's Choice (all entered)
9. Appaloosa	22. buck/dun/grulla/palo	35. Hubby's Choice (all entrants)
10. Paints	23. App color	
11. QH	24. Pinto color	
12. TB/Stand/Warmbloods	25. Other color	
13. Paso/Andal/Lippizan	26. OF Current Breyer	

PLUS... Many champions and reserves. THE MODEL RAG WANTS YOU!!

Here is the list to date of horses eligible to enter the December Championship show. Please note that this list DOES NOT include results of the October or November shows. Also, if I have inadvertently left anyone off the list, my apologies; send them in December anyway!

Ah So	Crystal Blue Persuasion (CG)	Dazzle Me	Figaro Sunrise
Akagi Gunma	*Chansonnier	Donnybrook Brigadier	Far Stars Burn
Akela Irongear	Chelsea	Donnybrook Tartan	Fade to Black
Amazon Queen	Cheif Bear Paw	Double Tuff	Favory Enchantment
Amore	Chirin's Bell	Diamondback	Freudian Slip
Angel Neat	Clash Game	Diamond Cavalier	Gai Naamfir
Ankoku Shitenno	Crest's Igotcha	Diamond Delusion	Galabar Gold
Aramis Rose	Cips Mirage	Diamond Seminole King	Golden Cielo
Arianna	Cherokee Lace	Designer's Ebony	Gold Nuggett
Avery	Cinnamon Stick	Dragonar	Grendel
Baby It's You	Clutch Cargo	Duke Commanche	Habitual
Bangkok Hitback	CM Dream Weaver	Dusty Mementos	Haddon Hill Legend
Bandolero	Cleo	Dutch Crown	High Echelon
Blackbay Whistle	Counter Clockwise	Diamond Goldylchs	Heaven Knows
BlackHawk	Carry Me Back	Doc Tom Tucker	Hellgate Aldebaran
Blaster Kid	Cranburry Melody	Dunn Gone	Hercules
Boston Charlie	Commander's Marquee	DW Flashy Shadow	Heritage Soothsayer
Brookridge Rajah	Corrdini	Emeraude	Hobo
Brigante	Cosmo Striker	Encore	Ilkasim
Brioso	Checkers Royale	Endemoniada	Imperial Echo
Bumpus	Capistrano Steel	El Condor Pasa	Imperial Lady
Butterscotch Dude	Cyborg Senshi	Electric Power	Impressive Pursuit
Baron's Watchmaster Clyde	*Daisuke	FF Dark Shadows	Isaac Gudonov
Cactus Flower	Dancing Heart	FF Moonshadow	Janx Bluesinthenight
Calico Kidd	Dancougar	FF Star Appeal	Jasmine
Cause for Alarm	Diamond Apropos	FF Winter Rose	Jeopardy
			Justa Rogue

Kaala	Mighty Manfred	RAS Majorette	Silhouette	The African Sun
Kamui	Mignon Theif	Rebel's Comfort	Silver Jet	The Impostor
Khat Mahjik	Mine All Mine	Red Skies Disappear	Silverleaf Vanity	Three Bars Caballero
King Hill Adonis	Mississippi	RM Last Rose of Summer	Shal La Zar	The Mad Cookie
Kashmere	Miss Show Off	Rhymnik	S&M Nonstop Erotic	Tomorrow's Joe
Kiriko	Mister Mad Cookie	Reflections in Rose	Cabaret	Tough Luck Fellas
Kharcaza	Mystical Memory	RM Silver Haze	Smuggler's Blues	Tulsa Tangler
Kokuko Rose	Mystery Babylon	RM Trafalgar	Snowman	Twice Shy
Koona Phoony	Mythopoetia	RM The Toy Wonder	Spartacus	Tyah Elite
Laique	Mon'nafa Rani	Robaram	Springhill Spring Replica	Vanya
Lerch	Moonstone's Luster	Rojo	SR Poco Foxy Lady	Vazdru
Like An Angel	Mon'sata il Shijar	Rosebud	Silver Rain	Vegas Bound
Love Can Do	My Te Impressive	Royal Sunshine Lady	Silver Rogue	Walkaway Ryo's Boy
LCS Free Spirit	Munchkin	Safari Eyes	Smokey Rose	Windy City Treasure
LCS Luminaire	My Blue Boy	Sagebrush Dancer	Silver Rocq	Wicked Design
LCS Flame Glow	My Finest Hour	Salutation	Silver Sun	Wickenden Osprey
LCS Night Fall	Naoto Nisei	Sand Storm	Silver Sunrise	Windjammer (RM)
Love Letters	Nepenthe	Scandinavian Sun	Startip Silver	Wolf Typhoon
Lindaren Loki	Noble Heir	Sharakk Sei	Silvertide	Wings to Fly
Lisiter Entranced	Norakuro Q	Sheffron Rogue	Stiletto	WV Anarion
Live and Direct	*NW Mezaoud	Silver Charger	Stupefyin' Jones	WV Brilliant Disguise
LS Calais	Old Rox	Silver Crescent	So Faline	WV Silmarien
Louis Cipher	Penny II	Smooth and Easy	Society Centerfold	WV Sweet Cider
Mahogany Mancha	Panoramic Pam	*Spur of the Moment	Spangles	WV Westerly
Mariposa	Poco Bar Speakeasy	Seiya	SR Wildest Dreams	Yabuki Joe
Megazone Eve	Poco Heart	Shadjir	Star Raider	Yellow Dancer
Mighty Impressive	Prototype	Shiryu Dragon	TF Moon Over Bourbon	Zona Lee
Mi Encanto	Quick Comet	Simply Irresistable	Street	



Are you ready??

It will be here before you know it!

Yes, it's true - the **TWO DAY 1990 Shining Aspen Live Show** is coming your way on **April 28 & 29, 1990!** This show will be **BIGGER** and **BETTER** (if that's possible!) than last year, with two Divisions (OF & RR), a wide variety of classes, a special Fantasy class, Novice classes, Breyer Collector's Class (and - hopefully - sponsorship!), great awards, raffles, door prizes, fun, and friends.

**Last year's show drew the largest turnout Washington State has ever seen at a live show; 38 entrants!** We also had the largest number of Novices to date - most of whom did very well in the regular classes! Entrants came from California, Oregon, Washington, and Canada - a truly diverse group!!

It is not too early to begin planning to attend the **1990 Shining Aspen Live Show** - send LSASE with 2 stamps for your show packet to:

**1990 Shining Aspen Live Show**

Daphne R. Macpherson  
5310 136th Place SW  
Edmonds, WA 98020