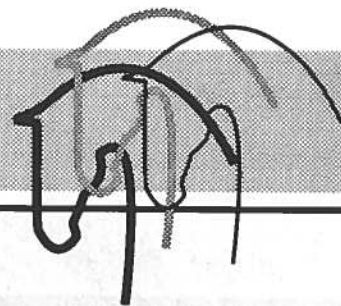
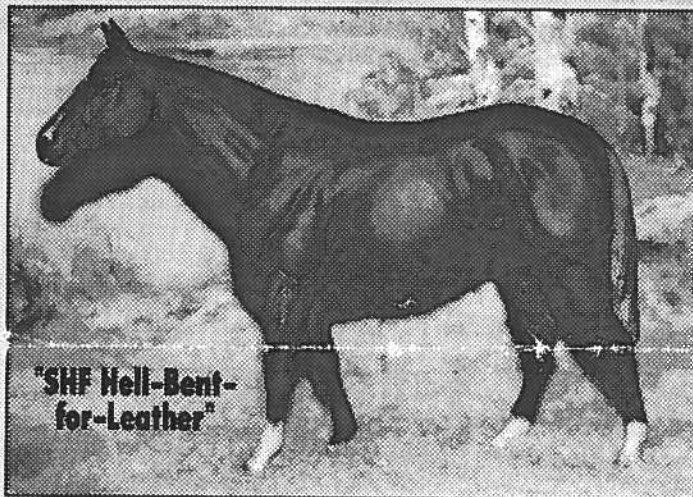


# The Small Horse



Items of interest to the model horse collector and shower. Published monthly.



"SHF Hell-Bent-for-Leather"

## Featured Model

This is a Royal Doulton (formerly Beswick) Connoisseur Series "Grundy" TB Stal., chestnut. Still available at Royal Doulton Factory Outlet Stores (pricey, but what a handsome fellow!). Owned by Alison L. Beniush.

## Issue Number 2 September 1992

### Editor's Notes

Welcome, treasured reader, to issue number 2! Sorry no big articles, but this issue is more like the format I had envisioned—just classifieds & news tidbits. Thanks for all your submissions! I just barely made it stuffing all this into two pages, so I guess I'll just have to give up and stay at four next time! Keep the good stuff coming, and are you telling your friends?

I received a few ads late. If your ad is not in this issue, that's why! If you mail your ad on Aug. 31, it's not gonna get here by September 1! Duh..! I will be firm on my deadlines, so look for any late ads in the next issue. Oct. issue deadline is Oct. 1st.

Paula Hecker, Editor of the *Hobby Horse News* faxed me a press release from the American Horse Council, about the devastation Hurricane Andrew has caused the HORSES in South Florida. Horses have been running wild due to no fences, many suffer injuries and haven't eaten for a week. The area is in desperate need of donations of feed and vet supplies, as much has been lost. I wish I had room to run the whole press release, but this little paper just isn't built for that. If you'd like to help, here are some phone numbers to contact: Veterinary Command Post at Tropical Park: (305) 554-7334; South Florida SPCA: (305) 625-3204; Affiliated Horse Organizations of S. Florida: (813) 494-3465; Circle J Feed Supply (coordinating feed supplies) (305) 824-0053.

As an aside to the info. over in the News section, I already ordered and received 2 sets of the Sears Lady Phase/Foal set in bay pinto, and the mare is NOT the same nice pattern as the catalog photo! She only has one big blotch of white on her near side instead of three! Blah! Why must Breyer always tease us with the test/prototype colors, and then let us down when the actual thing arrives?

See you next time!

## Hobby News and Interesting Stuff

I just received my 1992-93 SEARS *Wish Book Christmas Catalog*, and here's what Breyers are in it: "Spirit of the West" set: Lady Phase and Standing Stock Foal molds in bay overo pinto! Very nice! Set of 3 Drafters: Belgian in Alabaster, "Roy" mold in dark liver chestnut, and walking Shire mold in palomino. "Horses Great & Small" Set: Clyde Stal in shaded grey, "Merrylegs" mold in palomino, & Cantering Welsh Pony in black! There's a set that has a Saddlebred Weanling in bay pinto, with a doll in show attire plus bridle & whip. "Draw Horses With Sam Savitt" set comes with a classic Kelso in bay w/4 socks, plus Sam's book. Plus the "Quiet Foxhunters" set: "Roemer" mold in black, "Rugged Lark" mold in grey, and "John Henry" mold in dark bay. The cold-cast porcelain models are the Secretariat in his true color of chestnut, and the Sherman Morgan mold in liver chestnut(?). (Peter Stone said at the Model Horse Collector's Jamboree in CA that they will not be doing any more cold cast porcelains after these. They will be pursuing the hollow porcelains like the new Icelandic Pony.) Also in Sears is a set of exclusive SM's, which I will not list here..! Plus "Chaparral" the Limited Ed. for this year. They also are selling again this year the set of Arabs from last year, (BOO!! What happened to the usual one-year Special-Run-ness of Sears models?) Guess I'll be seeing you all at Sears this month..! Even tho' I'm not a huge Breyer collector, I do collect Lady Phase molds!

**DID YOU KNOW...** If you have a model broken in

shipment by UPS, BEWARE! If you notify them of a damage claim to get your insurance money, they will collect the damaged model and take it away! And then they THROW IT AWAY!! I thought they returned it to the sender, but they just toss it! So, if you get a broken horse, and think you should get reimbursed for the loss of value, but still want the model, DON'T contact UPS! Work it out between you and the sender! (In my experience, the breakage occurs due to poor packing on the sender's part, anyway!) Some models, like H-R's, are still valuable even if broken. It is awful to think of these horses going in the trash with only one broken leg or something!

**Coming Soon:** 2nd edition of the reference book **BREYER MOLDS & MODELS**, by Nancy Atkinson. The vastly expanded, approx. 125-page 2nd edition will include complete and accurate info on all catalog-run models through 1992 and all specials through 1991 (many for 1992, too!). Dates, numbers, colors, sculptors, mold stamps, color and mold variations and more! Alphabetical format, with all model names cross-referenced by mold. Tables showing total numbers of molds and models. (Book includes no pix.) Due out in September 1992. \$18. US, \$20. Canada, \$13. to peopel who bought the 1st edition. SASE with inquiries, please. Nancy Atkinson, 268 Ross Ct., Claremont, CA 91711-3139.

### Live Shows

**The First Annual "Show Us What Santa Brought/Sure Hope It Doesn't Snow This Weekend" All Halter** (con't. on back page...)

**The Small Horse** © 1992 **Karen Y. Gerhardt, Editor. 555 Utica Ave., Boulder, CO 80304-0776**

Notices, announcements, and news printed free of charge. (Limit 100 words, not including name & address.) No artwork or photos accepted, sorry! Featured Horse photos should be clear (no dark horses against dark backgrounds, etc.). Featured Horse submissions accepted only from subscribers. All submissions due by the first day of the month of publication. Send items early as space is limited each issue. Late items will be placed in next issue. Mailing date is the 15th of each month. Subscriptions: \$5.00 for 1 year. \$6.00 per year in Canada. Overseas rate \$7.00 per year. Include self-addressed stamped envelope (SASE) if reply is expected. Make checks payable to Karen Y. Gerhardt.

## The Small Horse

Karen Y. Gerhardt, Editor  
555 Utica Ave.  
Boulder, CO 80304-0776

TO:



**LIVE Show!** January 9, 1993 in Colorado Springs, CO. Over 25 classes, 18 championships, special sponsorship drawing, roping clinic and much more! Get outta your winter doldrums! Send for show packet today! SASE to: Nancy Dement, 6827 Mountaintop Lane, Colorado Springs, CO 80919.

**NON-Breyer Live Show Benefit for '93 NWC!** November 21, 1992. Separate classlists for Hartlands and chinas. Recycled flats & rosettes. Possible new trophies for Grand/Res. Send SASE to: Daphne R. Macpherson, 5310 136th Pl. SW, Edmonds, WA 98026.

**Southeastern NY Live Show.** Tri-State Model Horse Club will hold their fall model horse show October 31st—Nov. 1st, 1992, at Tymor Park in LaGrangeville, NY. Novice show Saturday, Open Show Sunday. Separate OF and Custom divisions. Many classes and championships, raffle both days. Enter, or just come to sell your goods and join in the fun! SASE for info to Terri Dennis, RR 2, Box 80, Pawling, NY 12564.

### For Sale

**For Sale:** Live Show Quality jumps, gymkhana & trail obstacles, leather halters, tasseled Arabian halters, doll clothes & chaps. Fast & friendly service. Send SASE: Traci Durrell-Khalife, 1666 SW Squaw Creek Pl., Corvallis OR 97333-1561.

**Bayou Workshops** has disc. SR, Woodgrain OF Breyers for sale! PLUS LSQ customized models, incl. many champs, and a whole lot more! Long SASE for illus. current list. To reserve next list send long SASE marked Fall list. Jamie Coughlin, 1525 Britton Rd., Lynn Haven, FL, 32444-3311.

**Discontinued and New Models!** Holly-Beck Express is an authorized Breyer Dealer. We are having a Special Sale starting on October 1, 1992—the new Breyer models will be marked very low for our annual Christmas sale! Send a LSASE for the sale prices to HOLLY-BECK EXPRESS, 7 Honeypot Rd., P.O. Box 52, Candor, NY 13743-0052.

**A few choice Breyers for sale...**all are mint cond.: Black BALD FACE Morgan, \$75.; Bucking Bronco, black \$60.; Halla + orig. box, \$40; Cantering Welsh Pony, Chestnut, w/UN-painted braids, plus orig. box, \$50; SR Black Belgian white/red tail ribbon, \$55.; Red Roan Running Stallion, \$95.; Hanoverian fab. dark bay, \$55. w/orig. box; Lady Phase, great dark chestnut, \$45.; Appaloosa Perf. Horse, \$40.; Running Mare, matte alab., pink nose/ears \$30. Postage not included, make offer if price too high! Karen Gerhardt, 555 Utica Ave., Boulder, CO 80304-0776, 303-447-2675.

**New Breyers!** Lowest prices anywhere! You've

seen the rest now check out the best! We have all the 1992 Breyers and more. Also vintage models, customized models, Kentucky Derby Cards and more! We buy, sell and trade, too. Send LSASE and specify which list or send a LSASE with 2 stamps for all lists. Sunny Shamrock Farm/Lindy & Tim Pinkham, P.O. Box 493, Camden, ME 04843.

**Breyer Models For Sale!** CWP, repaints, LB, Trad., Cips, lots more! LSASE: Sweetwater Farms, Alicia Grainger, 14781 Pomerado Rd. #209, Poway, CA 92064.

**Breyer Lamps Are Back!** Current offerings include "Cips" & "Family Appaloosa Foal". SASE for photo-pricelist to: W.M.H.C., c/o Alison L. Beniush, 1521 Fawn St., Deerfield, Dover, DE 19901-8204, (302) 678-2526.

**H-R's For Sale and For Trade!** For Sale: Monrovia FERSEYN Arab Stal., White, tri-color eyes & eyelash, very crackled, 1 clean retouched break, \$400. San Dimas Two Bits 6" QH Stal., buckskin, very nice detail, has 1 break (repaired/retouched to invisible), \$140. For Trade: (I may be persuaded to sell these for the right price...) FAB mint KELSO, superb color & detail, has Name and CA stickers; Monrovia Heather Morgan mare, matte palo. ex. detail, mint. Karen Gerhardt, 555 Utica Ave., Boulder, CO 80304-0776, 303-447-2675.

**Star Struck Stables offers for sale:** OF models: SR's, Disc. & Current. RRH bodies, RRH models by SSS, Deb Preuit, Cook, etc. Tack by various artists. SASE w/2-29¢ stamps to: Star Struck Stables, c/o Melissa Addison, 20428 Douglas, Tonganoxie, KS 66086-9806.

**For Sale:** Many OF & SR Breyer models, all excellent to mint; Franklin Mint Rose Carousel Horse; Goebel White Semi-Bearing large horse; custom models; props, photo snowflakes, pewter fantasy figurines; *Practical Horseman* magazines. SASE for updated list—always looking for Hagen-Renaker mini horses, charcoal running stallion, Bitsy Breyer dolls, Mego Men dolls. Beth Rappleyea, PO Box 644, Bedford, NY 10506-0644. Call after 4 pm EST, No collect (914) 234-0713.

**H-R Mini Shetlands & Mules Have Arrived!** Send a SASE for complete horse photo-pricelist to: W.M.H.C., c/o Alison L. Beniush, 1521 Fawn St., Deerfield, Dover, DE 19901-8204. (302) 678-2526.

**Attention Wizard's Vale fans!** I have decided to put my pride & joy, (and the only CM model I currently own...!), WV R'thana up for sale this fall! I plan to (finally) create some new horses for myself this winter, and so have decided I could let her go, when I create a replacement ... If interested, write! Karen Gerhardt/Wizard's Vale,

555 Utica Ave, Boulder, CO 80304-0776, (303) 447-2675.

### Clubs and Organizations

North American Model Thoroughbred Owners' and Breeders' Association (NAMTOBA) promotes the realistic breeding, showing and racing of the model TB. NAMTOBA offers monthly point shows, a series of Premiere races (including Triple Crown and Breeder's Cup), a bi-monthly newsletter, year-end awards and more! Send a business-size SASE to Julie DuVall, 891 W. 8th St., Ukiah, CA 91786-6402 for info packet.

### Tack/Equipment

**SMALL, SMALLER, SMALLEST!!** Sojourner Studios now offers lots of goodies for SM and LB models. Race tack and show halters along with the usual stuff. AND, just for the tots in the family, we now have "TUFF TACK", just right for the 6-to-10 year crowd. Easy-on, easy-off, no tiny buckles to fight, good-looking, semi-kid-proof tack. Send \$1.00 and long SASE for more info: Sojourner Studios, Dept. SH, 373 Cimarron, Lake Elmo, MN 55042. Order NOW for Christmas!

### Wanted/Trade

**Hagen-Renaker DW and Mini Horses Wanted!** I am mainly interested in the older models, including: Topper, Payday, Comanche, Sky Chief, Mischief, and Abu-Farwa. I will pay fair prices for models in mint condition, as well as broken/repared models. Mindy Binkley, 8941 NW 78 St., Apt. 246, Tamarac, FL 33321-2060.

### Publications

**Traveler's Rest Ranch Newsletter** is a bi-monthly publication featuring information on Breyer & Hartland models, breed profiles, model horse news, stories about famous horses, plus classified ads and even a drawing for hobby-related items. Send one postage stamp for your first issue to: TRR Newsletter, Paula Beard, 71 Aloha Circle, North Little Rock, AR 72120.

## SUBSCRIBE NOW!

*The Small Horse* Introductory Subscription Offer is still available! You can get 14 issues for the price of 12, if you subscribe now! This offer will expire without notice, so tell your hobby friends to stop stealing your issue and buy their own! Only \$5.00 per year for 12 (monthly) issues! Whatta deal!