

THE GLASS MENAGERIE



March Issue 1985

Volume 2

Number 10

Subscription Rates:

HRAC members.....Free
 Single Issue.....80¢
 Six months.....\$5.00
 One Year.....\$8.00

all issues
 sent 1st
 class

Ad Rates:

Send ad style #
 &
 Send Heading #

	We	Camera
	Prepare	Ready
1/4 Page Ad.....	.50¢	.25¢
1/2 Page Ad.....	.75¢	.50¢
3/4 Page Ad.....	\$1.00	.75¢
Full Page Ad.....	\$1.50	\$1.00
Photo Ad (up to 100 words)....	\$2.50	\$2.00
Page Sponser (under 25 words).	.15¢	.10¢
*Re-Runs (after initial set-up).....	.25¢	

* Ads that you want ran at least 2 or more months qualify for this discount!

Next Ad Deadline:

April Issue....Mar. 15th
 May Issue.....Apr. 15th

Editor:

Make all checks payable to:

Denise Nelson
 1816 Main Avenue
 Sacramento, Calif. 95838

AS EDITOR, I reserve the right to edit/shorten/delete ads as I see fit or refuse material deemed in bad taste. I am not responsible for illegal reprints, misprints, or misrepresentations of ads placed in THE GLASS MENAGERIE. I am not responsible for any issues lost in the mail. No materials returned without an SASE.

Hagen - Renaker Association Club News



Editor's notes,

Got lots of news to report on this month, so hold on!. First off, we have a National judge for the HRAC!! Bonnie Sumser graciously volunteered to judge our 1985 show! I personally am planning to send she a nice thank you card for her trouble, as our treasury can't really afford sending flowers or something else. So, if you wish to also send a card to thank her, her address is: 44 Short Street Tiffin, Ohio 44883. Info on the Nationals, plus classlist, will be in the April issue, you will have to add a class or two to your photos BEFORE you send them to her. Our "Janurary HRAC OF Model Benefit" raised \$18.85!! Thanks to ALL of you who came! Am getting ready to judge the "Feburary RR HRAC Benefit" and it also looks like we may clear about \$20.00!! So, ribbons will be ordered as soon as I get conformation from the ribbon company as to pricing. Results of the benefit show are listed in this issue. I also wish to welcome two new members of the HRAC, Judy Davinich, and Renee De Vore, congrats and happy H-R modeling!! Lastly, I would like to see a few members hold Benefits for the HRAC during this year if possible. Ribbons are cheaper if ordered befor Feburary! So, if we could raise the money early for the next Nationals it would be SUPER!

Up Comming Shows:

March: Lisa Barnett 149 Ruth Poute 11 Fayetteville, Ark. 72701

April: Nancy Mongan R.R. #3, Box 213 Oregon, Ill. 61061

*NATIONALS: Bonnie Sumser 44 Short Street Tiffin, Ohio 44883



Feburary Show Results



Champ. Stallion: Mai Tai-TY	Res. Stallion: Command Performance-CG
Champ. Mare: MM's Lady Rose-JM	Res. Mare: Frosty Surprise-CG
Champ. Gelding: Taliesin-CDM	Res. Geldins: Drifter-CG
Champ. Foal: Firebrand-CG & Kodachrome-JP	Res. Foal: Hajj-CG
Champ. Breed: Mai Tai-TY	Res. Breed: MM's Lady Rose-JM
Champ. Color: Command Performance-CG	Res. Color: Mai Tai-TY
Champ. Halter: Mai Tai-TY	Res. Halter: MM's Lady Rose-JM
Champ. H-R: Frosty Surprise-CG	Res. H-R: Crystal Singer-TY
Champ. English: Sunshine Shadows-CG & Frosty Surprise-CG	Res. eng.: Taliesin
Grand. Champ.: Mai Tai-TY	Res. Grand: MM's Lady Rose-JM



Am sure all of you know by now that H-R has discounted it's line of horses!!! The only exception is the newest H-R Quarter Horse Mare, all others are NO MORE! So, scarf up all you can find in your area!! Your editor needs some of these, let me know if you have an extra of any!!!!

The Model Horse Gazette is a top-quality bi-monthly model horse magazine in an 8 1/2 x 11 inch format with two type set columns per page. Our Jan/Feb 1985 issue contained 40 pages and contained 61 quality photos. It also includes regularly appearing columns on judging, discontinued models, and featured horse breeds as well as photographic coverage of live shows. \$3 gets you a trial issue, \$14.95 a year's subscription. True, we are more expensive than the rest, but isn't your hobby worth it? **The Model Horse Gazette, Dept HR, 28 Carter Lake Club, Carter Lake IA 51510**

Results from the January 25, 1985 OF Model Benefit

 Entries; Jenny Provencher-JP Trish Yanko-TY Jeanette Mc Call-JMC Vickie
 Whittemore-VW Laura Mc Elray-LE Linda Jones-LJ Lois Thomas-LT
 (21) Beth Dickinson-BD Linda Wright-LW Anita Poole-AP Diane Guppy-DG
 Lorraine Kistler-LK Judy Draeger-JD Joanne Coleman-JC Leslie
 Hughes-LH Kevin Peeples-KP Emma Rainey-ER Melody Metcalf-MM
 Helen Purkis-HP Mary-Lou Blake-MB Betsy Pierzga-BP

Ch. Disc. Breyer Stallions: Fronterizo-LJ	Res.: Light of the Universe-TY
Ch. Cur. Breyer Stallions: Ebony Zephyr-BD	Res.: Festevole-MM
Ch. Disc. H-R Stallions: Crusader-KP	Res.: Zurishaddai-JMC
Ch. Cur. H-R Stallions: Iago-TY	Res.: Hadji Ben Siwa-VW
Ch. All Hartland Stallions: Raitez-AP	Res.: Contempo-LW
Ch. All Beswick Stallions: Saxon-HP	Res.: Camouflage-LK
Ch. All Japan Stallions: Rowan Tribute-VW	Res.: Shascade-TY
Ch. All Eustis Sexes: Woodland Radiance-BP	Res.: Baron's Crown Prince-JMC
Ch. Disc. Breyer Mares: Unknown-LE	Res.: Connie Rae Rose-BP
Ch. Cur. Breyer Mares: Cherie Amour-JC	Res.: November Sparkle-LH
Ch. Disc. H-R Mares: MM's Lady Rose-JMC	Res.: Crystal Singer-TY
Ch. Cur. H-R Mares: TW Snow Flurry-JD	Res.: Brookside Madge-VW
Ch. All Hartland Mares: Fauna-LW	Res.: Crystalorn-TY
Ch. All Beswick Mares: Braemar Bonny-DG	Res.: Silver Sunshine-LJ
Ch. All Japan Mares: Baton Rouge-VW	Res.: Fuzzy-LE
Ch. Disc. Breyer Geldings: Glory Bound-LH	Res.: Dusty Traveler-ER
Ch. Cur. Breyer Geldings: Current Romeo-MB	Res.: Quiet Riot-LT
Ch. Disc. H-R Geldings: Ashes to Ashes-LH	Res.: Dorito Bandito-ER
Ch. Cur. H-R Geldings: Ulysses-ER	Res.: Shebredar-VW
Ch. All Hartland Geldings: Darlington-LW	Res.: Sandalwood Songster-JP
Ch. All Beswick Geldings: Coho-TY	Res.: Westminster Appy-TY
Ch. All Japan Geldings: Victory Keedy-JP	Res.: Sculpin-TY
Ch. Disc. Breyer Foals: TW Sterling Silver-JD	Res.: Ramases Cascade Gilt-LJ
Ch. Cur. Breyer Foals: Melodce-LW	Res.: This Bret's The One-MB
Ch. Disc. H-R Foals: Miss Peggy Lou-ER	Res.: Naaraia-VW
Ch. Cur. H-R Foals: Impala-DG	Res.: Zenith-BD
Ch. All Hartland Foals: Tashery-LW	Res.: High Moon Shot-LJ
Ch. All Beswick Foals: Tau Ceti-TY	Res.: C.V. Wildfire-DG
Ch. ALL Japan Foals: Solo II-VW	Res.: Sleepy Imitation-KP

MODEL HORSE COLLECTORS - Make sure you aren't missing the best source of ads and information for the model horse collector! HORSE'N AROUND features advertising AND features that can't be matched anywhere else! Every month we have:

...Say "Cheese", Please - a regular feature article in HORSE'N AROUND, which introduces a collector, shower, remaker or just plain all-around model horse enthusiast. We include a writeup AND a photograph of the "featured guest" HORSE'N AROUND invites all model horse people to share their background with our readers through this column.

...On the Agenda - our answer to the questions asked the most during the model horse "show season" - where are the live-shows; when is the next show; and who do I contact for more information. We list the name, location, date and "contact" person's address for upcoming live shows free of charge in this monthly feature. Send us this information and we will list the show in the column from the date we receive it until the actual date of the show.

...From Grandma's Attic - an informational feature designed to help you identify the different horse models that have been manufactured by Breyer, Hartland, Hagen-Renaker and other major manufacturers. Each month we have photographs and a complete description of a certain mold, including the colors it has been produced in, whether it's discontinued, how rare the model is, what the manufacturer model numbers are, and any little tidbits that will help you find and collect these horses.

...and LOTS of advertising! Our advertising rates are very reasonable too - and we feature high quality SCREENED photo ads.

Write today for information - sample issues are \$2.00, yearly subscriptions (12 issues) are \$15.25. Our issues are mailed first class, the first working day of every month!

HORSE'N AROUND / Judy Davinich, editor / Dept ^{HRAC} / P.O. Box 304 / Little Chute, WI 54140. SASE with inquiries appreciated.



It must be Spring!!
Little foals all over.

AUTUMN HERITAGE FARMS

presents:

It's 1985 Sire & Dam
list of H-R Models.
Commercial type large
certificates, tracing
back 3 generations!!

From your editor

*Send Business size SASE



Wanted To Buy

The following is a list of Hagen-Renaker horses that I am trying to locate. I will try to pay the best prices possible, so if you can help me find any of these models, I would sure appreciate your help. If you have any of these horses for sale, or know of someone who does, please write Jeannie McCall, 159 Park Blvd., Monticello, IA 52310, or call (319) 465-3341, collect, if necessary:

Designers Workshop:

Minis:

- | | | | |
|------|--|-----|-------------------------------------|
| B688 | Maverick in buckskin | A62 | Colt, in br. or palomino |
| 679 | Honora, white brown or bay | 209 | Reclining horse in pal. |
| 759 | Honora, white br. or bay | 147 | Colt, in bay |
| 674 | Sun Cortez, in palomino | 148 | Colt, in bay |
| 658 | Sherif, white, grey or rose grey | 234 | Rearing horse, white or buckskin |
| 702 | Peggy Lou, in brown | 235 | Running colt, bay, pal. or white |
| 682 | Sky Chief, in pal. or white | 428 | Head up horse, pinto only |
| 680 | Mischief, in pal. or white | 429 | Head down horse, pinto or buckskin |
| 656 | Zara, in br., white, bay, or rosegrey | 362 | Head up colt, buckskin |
| 655 | Amir, in white, grey, or rosegrey | 361 | Head dwn. colt, buckskin |
| 645 | Zilla, in white, bay or rosegrey. | 363 | Head turned colt, brown |
| 653 | OLD Lippizan, white or bay | 391 | Tail up Morgan colt, pal. or brown. |
| 644 | OLD Stella, in bay, | 390 | Morgan foal in palomino |
| 638 | Fez, white, pal, grey, black or brown. | 388 | Morgan mare in palomino |
| 612 | Fez (sm), in chestnut or wh | 046 | Arab mare in grey or rosegrey |
| 621 | Abu Farwa, in white | 047 | Arab stallion in grey or rosegrey |
| 626 | Nancy, in grey or brown | 048 | Arab foal in rosegrey |
| 627 | Tony, in grey or brown | 049 | Arab lying foal in grey or rosegrey |
| 548 | Heather, pal. buckskin, br, or white | 298 | Arab foal in grey or rose grey |
| 561 | Clover, in pal. or white | 297 | Action Arab in bay |
| 577 | Payday, in glossy bay | 233 | Horse in glossy bay |
| 576 | Topper, in glossy pal. | | |
| 565 | Maydee, in any colors | | |
| 566 | Wrangler in any colors | | |
| 564 | Rascal, in any colors | | |
| 567 | Sespe Violette, pal. or br. | | |
| 730 | Commanche, in any colors | | |
| 731 | Daisey, in any colors | | |
| 732 | Butch, in any colors | | |
| 535 | Rearing stallion, pal. or br. | | |
| 536 | Standing stallion, pal./br. | | |
| 537 | Head up colt, pal. or brown. | | |
| 538 | Head down colt, pal. or br. | | |
| 689 | OLD Cutter, in any colors | | |



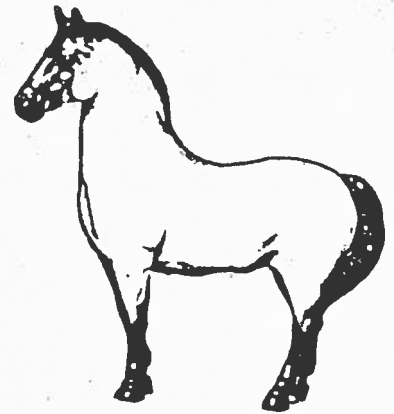
H-R # A360 MINI WILD HORSE

This little guy looks like a miniature Sun Cortez! He was made from 1958 to 1959 only. He came in brown or a buckskin, in both glossy & matt. He stands 2 3/4" high.



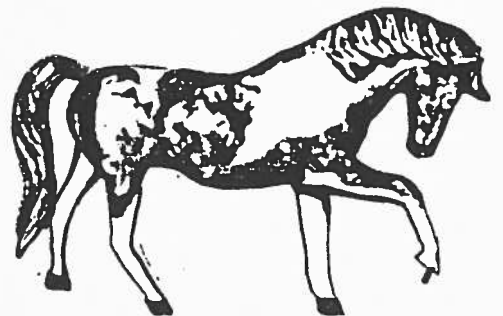
H-R # A428 STANDING HORSE

This QH type mold was produced in 1960 and again from 1964 to 1966. He came in palomino, buckskin and a black pinto. The pinto paint is a real problem, due to the fact that H-R DIDN'T bake on the spots!! So, take care when cleaning him. He is 3" tall.



H-R # A429 PRANCING HORSE

This is the mate to the above horse, and like the other one he came out in 1960 and again from 1964 to 1966. He also came in the palomino, buckskin and black pinto. Again care should be taken when cleaning the pinto as the spots weren't baked on! He is 2" at ear tips.



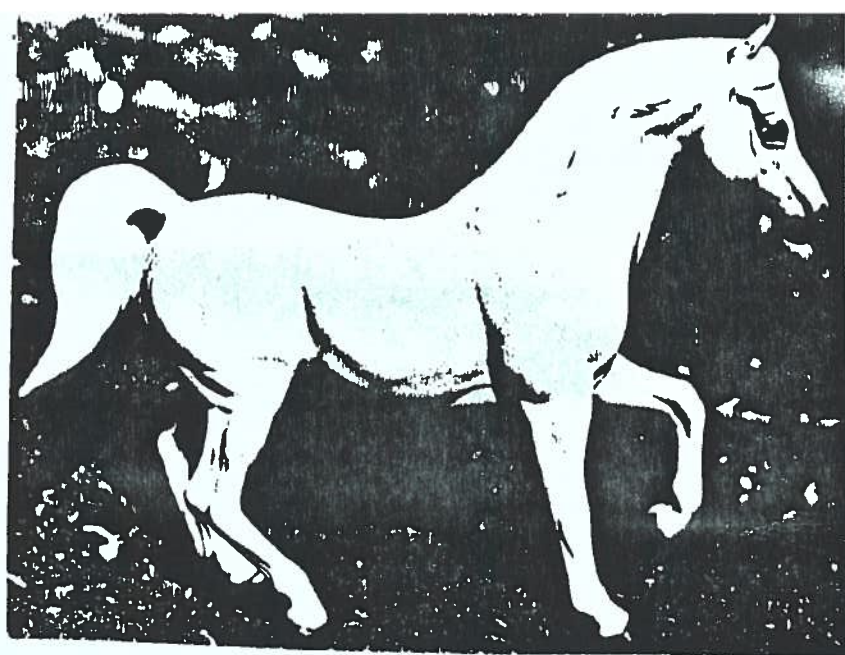
H-R # A480 REARING HORSE

This spirited little horse looks almost Arab, having finer detail and legs, that H-R #A234. This mold came in brown and palomino, and was made from 1961 to 1972. He stands 4" tall.



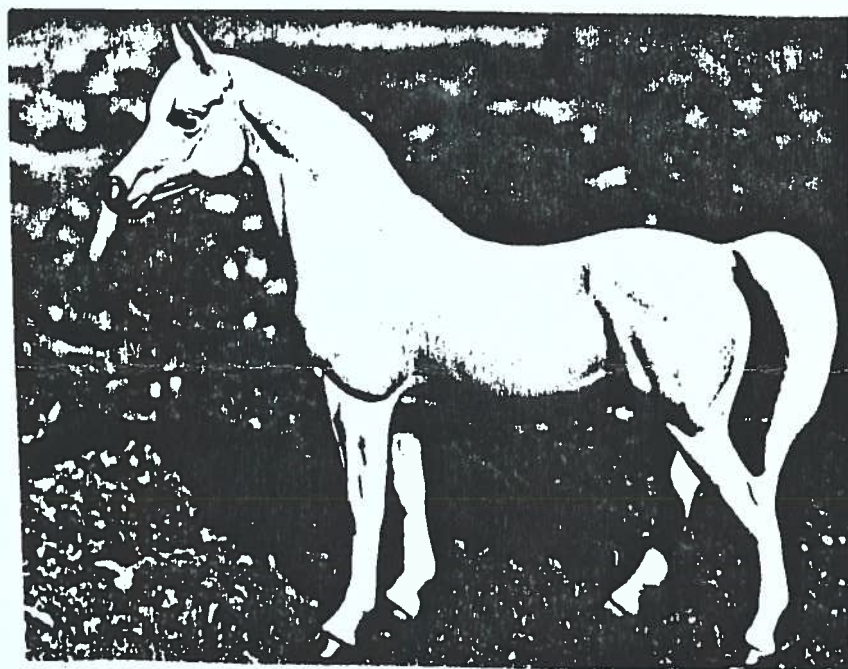
H-R # B-655 LARGE AMIR

This is the large version of the Amir. It looks nothing like the 7" one. He was produced from 1956 to 1958 and again in 1962. He came in white, bay and gorse-grey and stands 9" at ear tips.



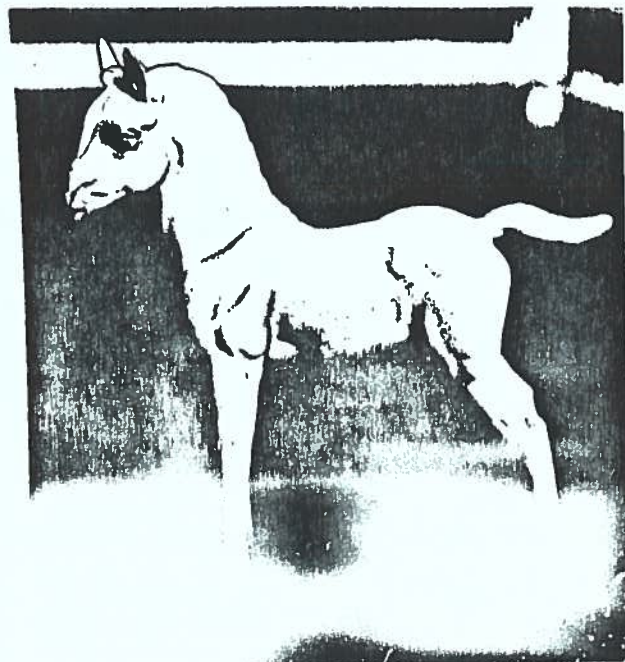
H-R # B-656 LARGE ZARA

Again this large Zara looks nothing like the 7" version. She was made from 1956 to 1958 and again in 1962. She came in white, grey, and bay, and stands 9" tall.



H-R # B-645 LARGE ZILLA

This Arabian foal is the foal to the Lg. Amir & Lg. Zara. This is the same mold that H-R has brought back in to production. The old ones were made in white, rose grey and bay to match their parents. He was made from 1956 to 1958, and again in 1962, and stands 6 3/4" high.





Kay Fowler
414 So. Indian Hill #25
Claremont, Calif. 91711

1st Class



Sacramento, Calif. 95838

1816 Main Avenue

Denise Nelson

The Glass Menagerie

