

DOUBLE DIAMOND
RANCH

Special Sales
List

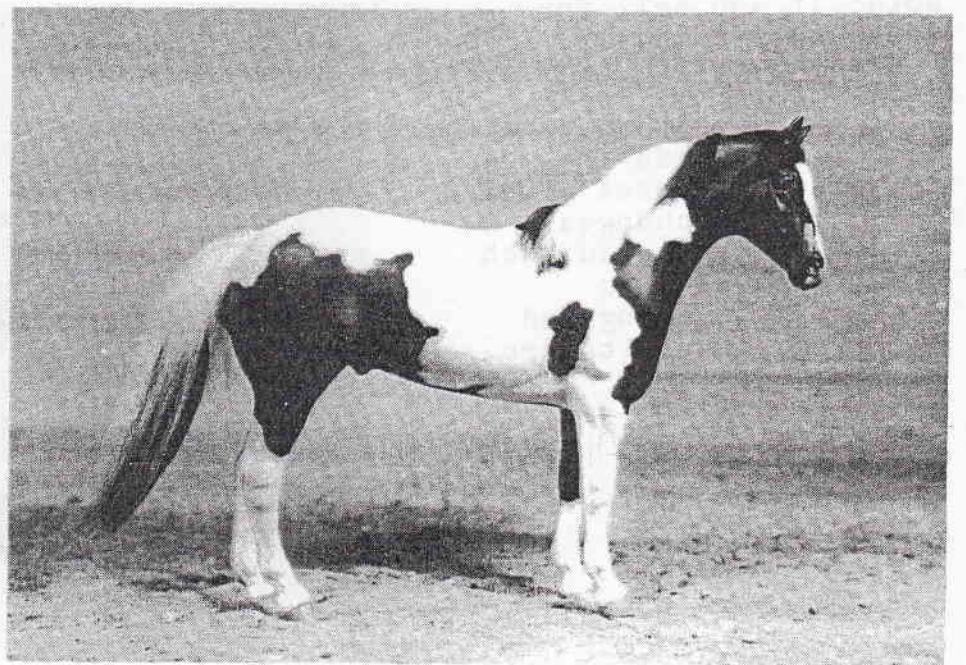
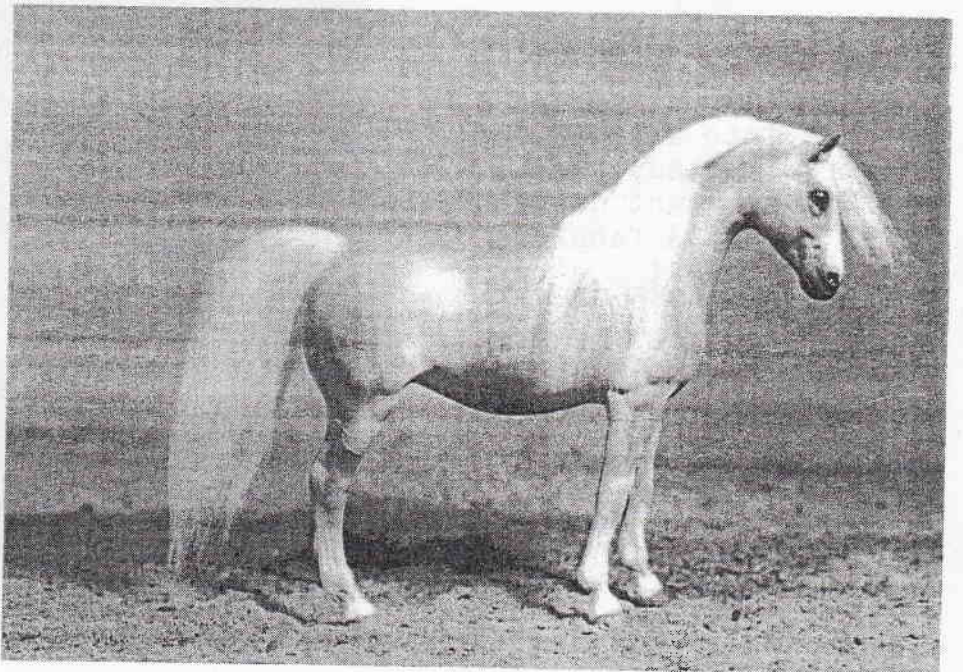
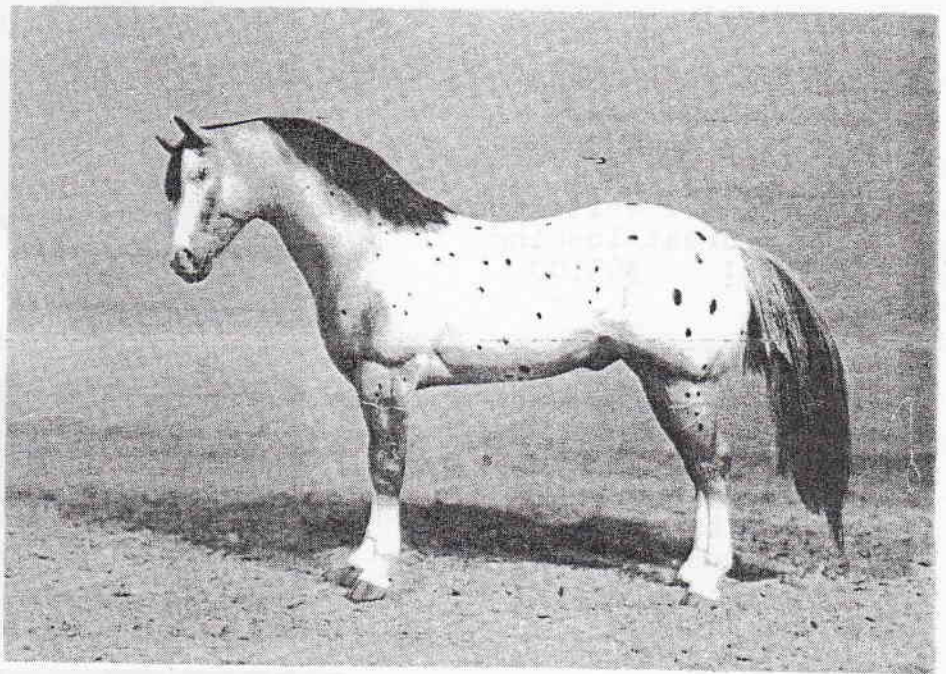
Tired of the same old
look alike models?
This list has many
special combination
models, making them
unique and one of a
kind.

All models come with
certificate of
authenticity, and at
least two photos,
most have more. They
have shoes, carved
ears, veins ect.

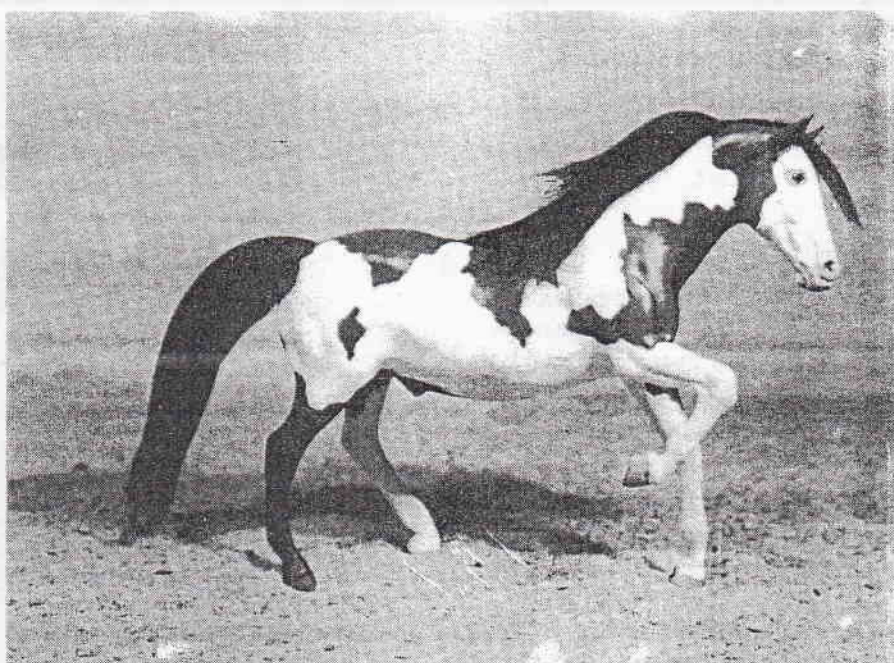
The models are ready
to go. Shipping is
\$4.50 for UPS in the
United States. \$7.00
for Alaska and U.S. Mail
\$9.00 for airmail to
Canada. Overseas is
\$21.00 Germany,
England & Netherlands
Sweden is \$26.00
If you pay for your
model with a postal
money order, I will
pay shipping in the
U.S. via UPS or deduct
\$5.00 from overseas.

About the models
#1 Wild Blue Diamonds
This is a Lady Phase
stock stallion
combination made into
a stallion. He is
blue roan with spotted
blanket. Blaze face
with one blue eye.
Beautiful! \$95.00

#2 Diamond Althea
A lovely Lippizan
mare made from
Black Stallion
combination.
Really pretty light
dapple grey!
\$75.00

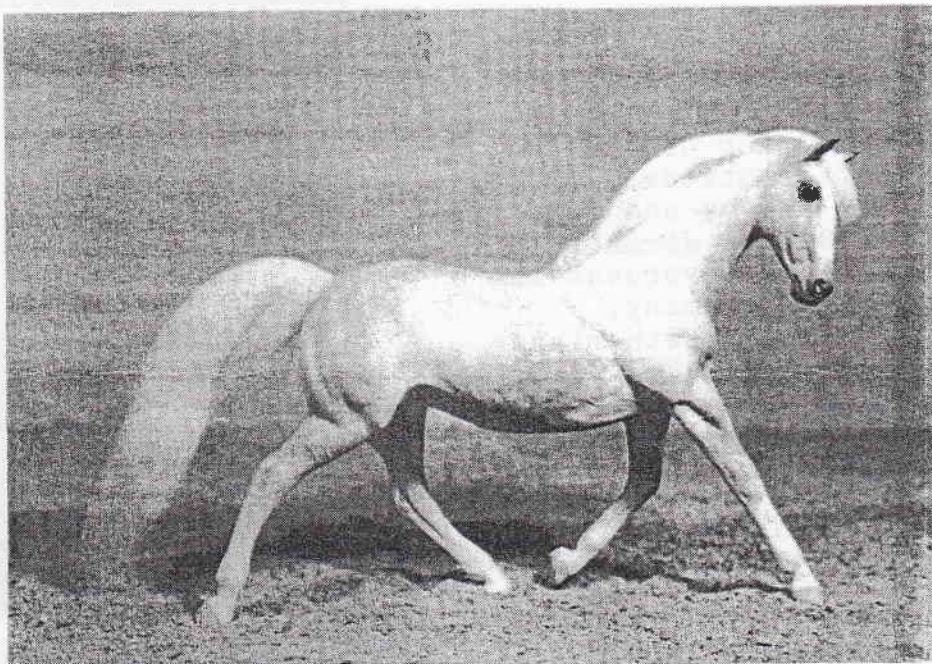


#3 (from first page)
Diamonds and Aces
This is a Stud splder
combination model. He
is a black & white Tobiano
paint. Great looking
stallion! \$95.00

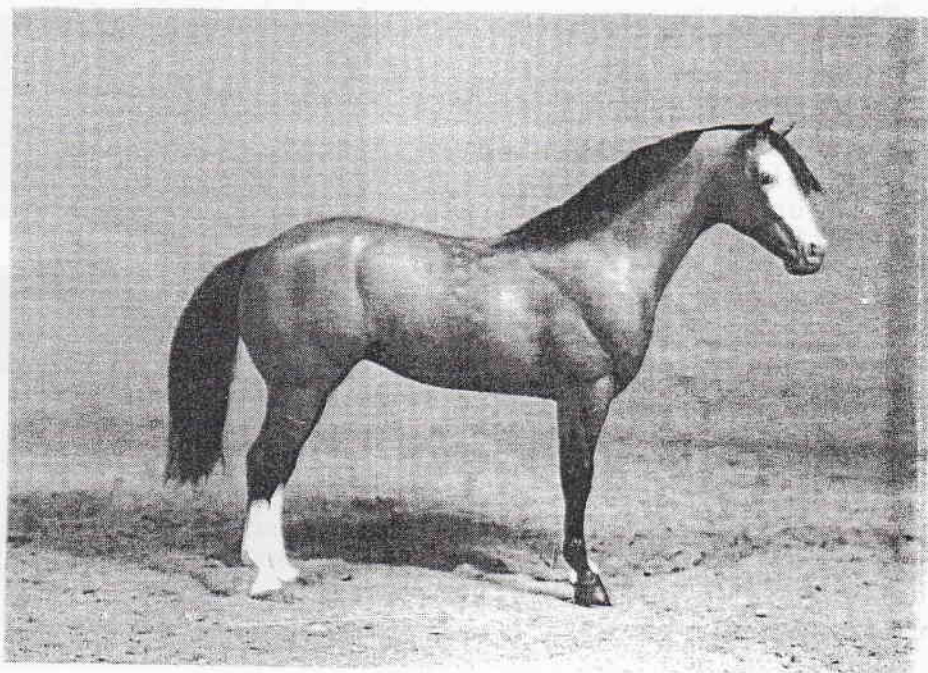


#4 Diamond Warrior
A mustang overo paint
made from a Black Beauty
combination. He is a
shaded bay and white
with one blue eye.
A very unusual model
with great potential
for the shows.
\$95.00

#5 Diamond Cloud Dancer
This is the Black Beauty
mold (older cantering)
remade into a trot with
head collected. She
is a very light dappled
grey mare. A fabulous
looking model!
\$85.00



#6 Tuff Lady Diamond
The Lady Phase mold
with head turned. She
is a dappled buckskin
with lots of shading.
Bald face with one blue
eye. Nice QH mare!
\$75.00

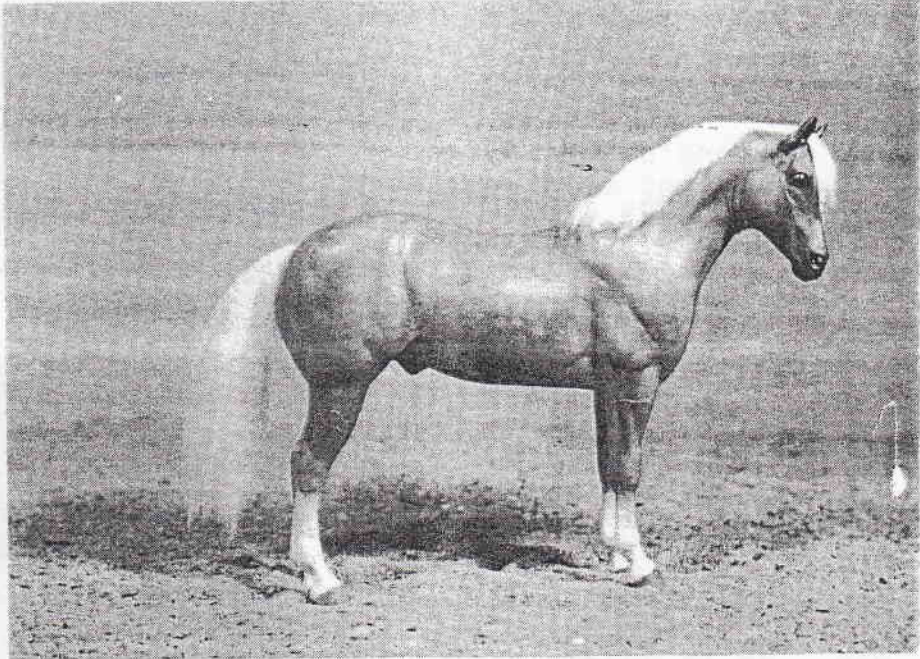


Note; If you call for
me to hold a model,
please have the payment
here within two weeks.
Give a 2nd and 3rd
choice when ordering
by mail. I cannot give
refunds or exchanges
because there is so much
time involved with
paperwork, packing and
shipping. Deposits are
non-refundable

#7 Dandy Gold Diamond

A lightly dappled golden palomino QH gelding. This model is a Lady Phase combination mold. Remade as a gelding. A hard to beat model!

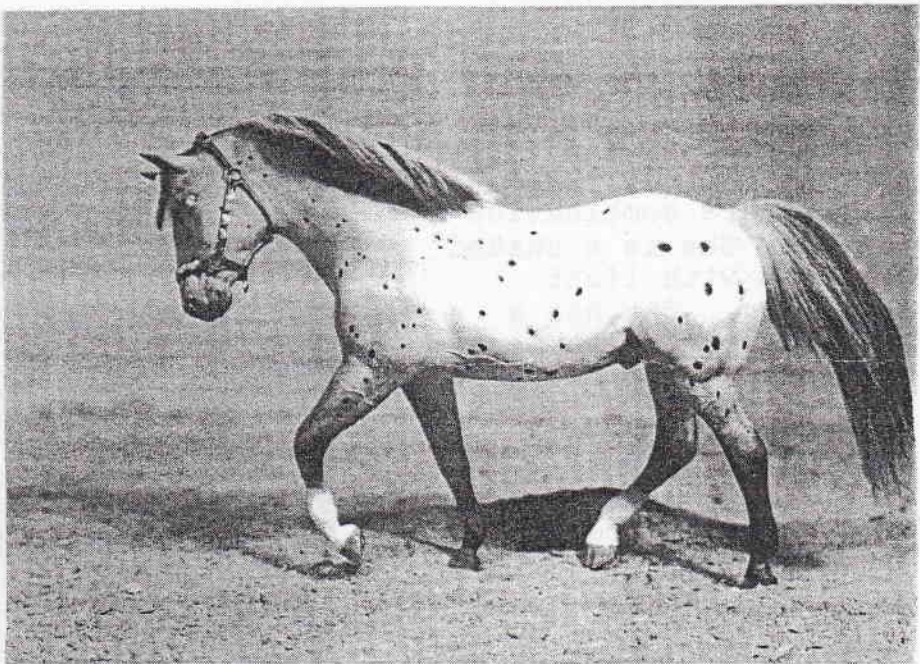
\$95.00



#8 Diamond King's Image

This is a Yellow Mount combination model that has been remade into a trot on a stand. He is a stallion, red bay semi-leopard. Mane and tail are black with white frosted hairs. He is a terrific horse with lots of potential to be a champion. He is on a stand.

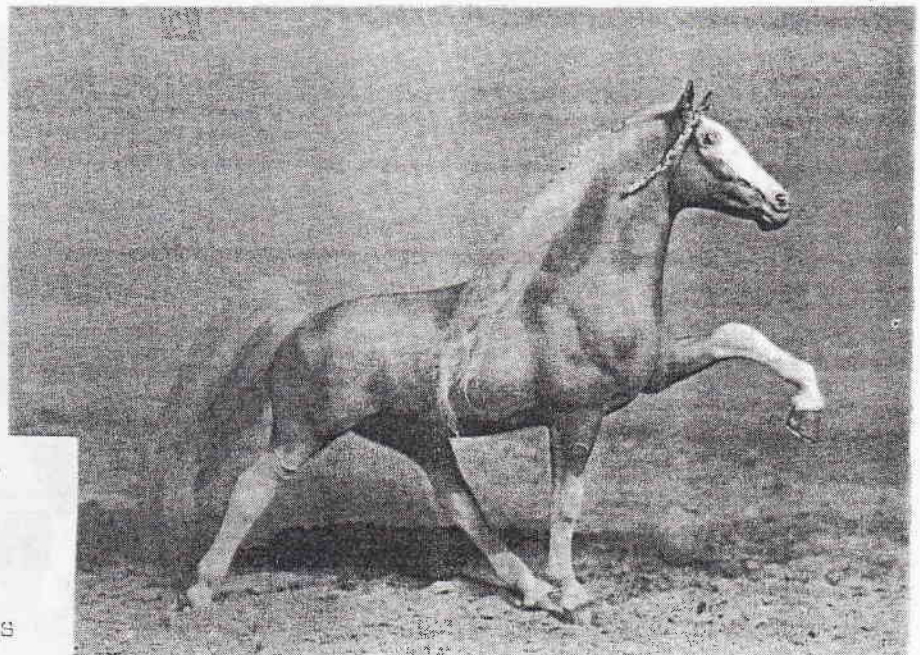
\$95.00



#9 Diamond's Strawberry Mist

This Tennessee Walker mare has been made from a black beauty combination. She is a breathtaking red roan with flaxen mane and tail. High white stockings and one blue eye. One of my favorites!

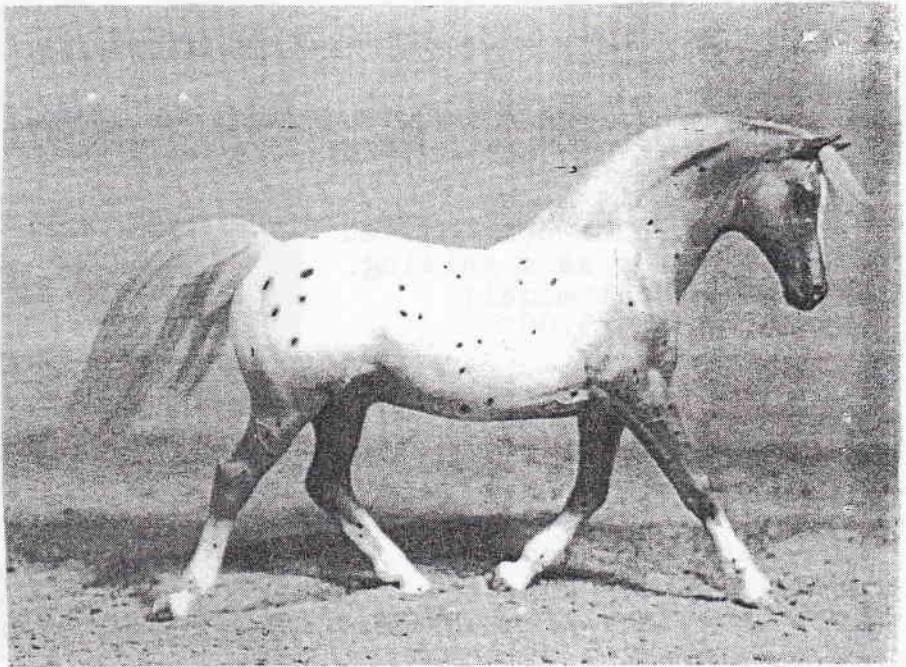
\$95.00



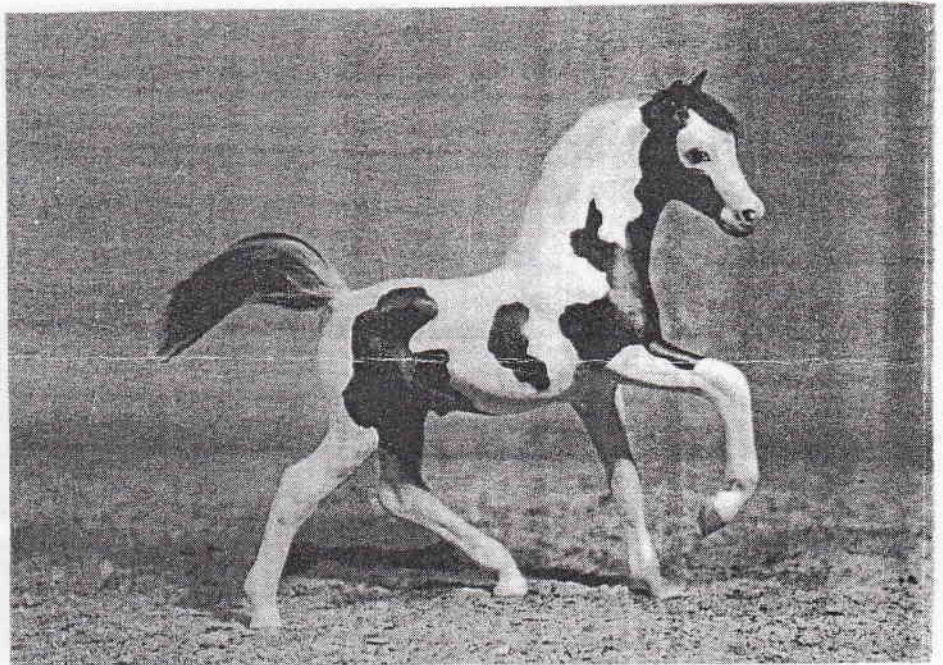
All models are live show quality. They were painted in 1994 but I've been working on some of them for several years! I had planned on taking them to live shows, but because of health problems I must limit myself to very few or no live shows in the future. I'm extremely allergic to perfumes, detergents with perfume ect. I have to limit my contact with people because of it.

LAST ISSUE! Please renew now!
\$4.00 plus 4 1st class stamps
and 4 address labels (that stick)
or \$5.50 without labels and stamps

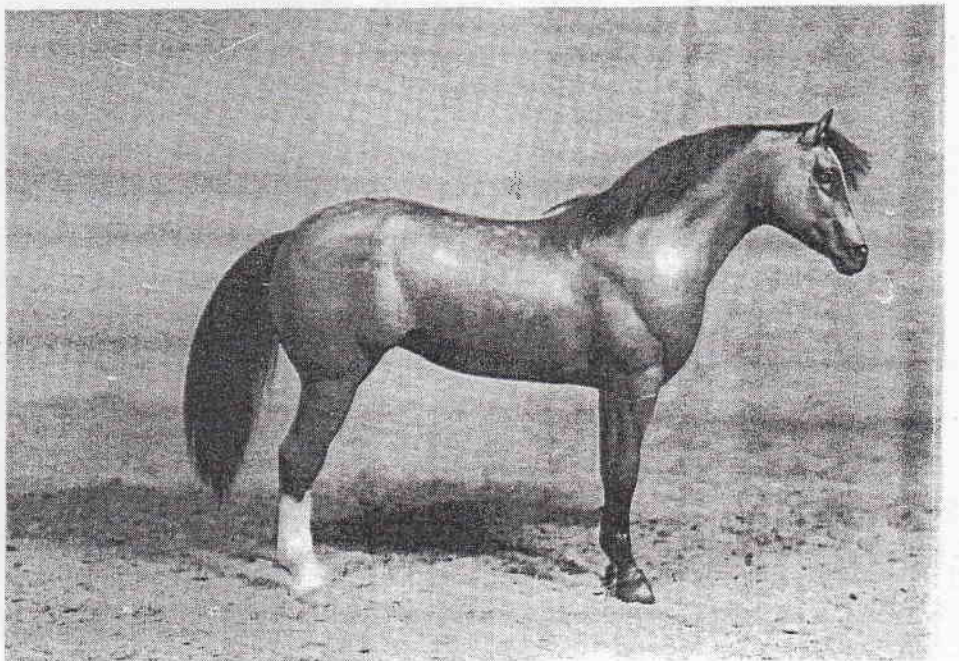
#10 Diamond's Gold Nugget
A Morganglanz mold remade
with head more collected.
He is a golden chestnut
semi-leopard appaloosa.
Should be a great performance
model. He has a flaxen
mane and tail with halo
type spots. Very pretty!
\$75.00



#11 Spirit of Diamonds
This is a completely
remade running foal in
black and white tobiano
pinto. He has one blue
eye. He is adorable!
\$65.00



#12 Sundown Diamond
Last on this list but
certainly not the least.
This is a Lady Phase,
stock mare combination
model. She is a shaded
red dun with light
dappling. She has a
deep redish brown mane
and tail. Her color is
magnificent and ranges
from redish brown to
golden highlights.
She should be a top
show horse. Great
looking QH!
\$85.00



I do have color photos
of the models for
inspection, but they
sell fast so there is
no guarantee the
horse will still be
available by the time
you see the picture!



Double Diamond Ranch
Kathleen Maestas
508 West Maple
Farmington, NM 87401

(505) 325-7760
no collect calls