

THE MODEL RAG

Volume 4, Number 5

October/November 1990

Single Issue: \$3.25



REVENGE OF THE "TORONTO TRASH QUEEN"

Last month's Cover Girl (Stephanie Robson) was SO delighted at the honor bestowed upon her that she sent us this lovely shot of our friend Laurie J. She says, "Laurie Jo Mama? Oh, a charming woman! Warm and friendly to all - just look at that radiant expression!"

To those of you even THINKING about holding a live show - beware! This could happen to YOU! Well, maybe not...

Inside This Issue...

Once again, your faithful editor knows NOTHING about what Heather is planning for us! But...we always have Drivel, which rambles on in its usual "stream of consciousness" way, touching on the usual slimy, creeping, stuffed topics. We also have a listing of model horse abbreviations for your viewing pleasure...

About The Model Rag...

The Model Rag was established in 1987 by collectors for collectors. The format was developed based on ideas from many people actively involved in all aspects of the hobby, and is flexible to the changing needs of our readers.

In order to allow you to more easily locate the information that you are most interested in, The Model Rag is divided into separate sections:

For Sale

Wanted

Miscellaneous (repainting and tack services, clubs, personals, etc.)

Showtime

"People, Places & Things" (to fill you in on the people, places and things that make this hobby special)

"The Litterbox" (our commentary section, where you can get the latest information on what's new from the manufacturers, special runs, and who doing what to whom).

We offer articles on various topics of interest to the hobby, and also have several reoccurring columns, such as Cheap Thrills, Madeline's Newsletter, and Laurie's Drivel Column (O.K., we know the Drivel Column is a little, um... different, but it grows on you! Besides, what other model horse publication offers a column that even non-hobbyists look forward to reading!)

Subscriptions

\$15.00 for one year (6 issues); Trial Issue: \$3.25. The Model Rag is published bi-monthly, and is sent flat via **FIRST-CLASS MAIL** on or near the 15th of the publication month (February, April, June, August, October, and December). Send all subscriptions to: Heather Wells, 3985 Strong St., Riverside, CA 92501. Please include an SASE if reply needed.

Advertising Rates

	CAMERA-READY		Non-Camera Ready
	Subscribers	Non-Subs	
Full Page (7 1/2 x 10)	\$8.00	\$12.00	\$20.00
Half Page (7 1/2 x 5 or 3 1/2 x 10)	\$5.00	\$ 7.50	\$12.00
Quarter Page (7 1/2 x 2 1/2 or 3 1/2 x 5)	\$2.50	\$ 3.75	\$ 7.00
Classifieds (50 words or less)	\$1.50	\$ 3.00	---
(Not including name/address)			
Photo Ads	\$2.00/pic	\$4.00/pic	---
(In addition to cost of full or half page ad)			

All Classified will be retyped, so there is no extra charge for non-camera ready.

PLUS>>> In addition to the reduced ad rates above, every subscriber to The Model Rag gets an additional bonus: one free classified ad in each issue!

Live Show Listings are free (see Showtime section).

Advertising Deadline

Deadline for submission of advertising is the 20th of the month preceding the issue date. For example, the deadline for the February 15th issue is January 20th.

Advertising and subscription rates are subject to change without notice. We reserve the right to re-type, shrink-to-fit and/or edit copy as needed. We also reserve the right to refuse any advertising or material that we feel is inappropriate.

The Model Rag and its editors are not responsible for the content or accuracy of advertising submitted for publication.

Our Founders:

Subscription Queen:

Heather Wells, 3985 Strong Street, Riverside, CA 92501 (714) 684-0247. In addition to subscriptions, any material for The Litterbox or the People, Places & Things columns should be sent to Heather.

High Priestess of Advertising- Editor-In-Chief:

Kay Fowler, 160 Stony Bank Road, Glen Mills, PA 19342 (215) 459-0484 (9 a.m. to 9 p.m. E.S.T. ONLY!) If you get our answering machine ("StoneFox Farm") please feel free to leave a message. ALL advertising must be sent to me! Please specify which section you would prefer your ad(s) to go in (i.e. For Sale, Wanted, Miscellaneous, Showtime). If you must send anything that requires the recipient's signature (i.e. Express Mail, Federal Express), please send it to me at my office: Kay Fowler, Sullivan Payne Co., One Liberty Place, Suite 3000, 1650 Market Street, Philadelphia, PA 19103. Be sure and mark it "Personal & Confidential!"

Mistress of Drivel:

Laurie Jensen, 32891 Calle del Tesoro, San Juan Capistrano, CA 92675. Send her anything you want for her Drivel column, plus any entries for Remaker of the Issue or Old Timer's Album. Actually, if you have anything that's weird, unusual, or involves taxidermy, PLEASE send it to Laurie!

A special "Thank You" to our contributing columnists, Gale Good and Cheryl Mundee, and to Brad Leisure, creator of Fred Horse ("Idol of Dozens").

The Model Rag is the model magazine for serious collectors who don't take everything too seriously. If you have any comments, questions, or suggestions, send them on in! (If you say nice things, we may even print them!)

FOR SALE FOR SALE FOR SALE FOR SALE FOR SALE FOR SALE FOR SALE

Always a large list of Breyers, Hartlands, Japan and other china and usually some H-R for sale as well as R/R calf service, usually some already made models available. Also looking for anything H-R made. Send LSASE w/45¢ postage and one loose 25¢ stamp for sales list. Cheryl Greene, 1431 N. Lascerne Circle, Mansfield, Ohio 44906. (419) 529-2136. No collect please!

FOR SALE: Over 100 models, all are OF discontinued or SR Breyers. Most are in mint condition. Send LSASE to: Lynn Woodrick, 8000 Warren Woods, Lot 74, Three Oaks, MI 49128

BREYER AT A DISCOUNT! MINI H-R's TOO - NEW Hackney & TB Mare @ \$4.95. Most Traditional adults \$12.95-13.70, Roemer/Khemo @ \$16.70, Classics and most Traditional foals @\$8.40, LBs \$5.35, SMs \$3.05, most gift sets \$16.75-20.55. SASE for pricelist. LAZY TWO A, P.O. Box 55307, Stockton, CA 95205.

Over 100 discontinued & SR Breyers, including: glossy grey Appy Fighting stallion, albino 5-Gaiter, old matte dapple grey Belgian with dapples all over, matte grey Belgian, buckskin Adios, black Seabiscuit (not Galloping TB), and many more. Also some H-R's: minis & DW dogs. LSASE to: Lyn Lemmons, 11011 44th St NE, Lake Stevens, WA 98258-9565. (206)334-0749

MANY Disc and hard to find Breyers and Hartlands for sale. Also some chinas. Send LSASE w/ 2 stamps for complete list: Lassie, Rin-Tin-Tin, Breyer Cowboy, old mold alab PAM, Horned Hereford, glossy brown Western Horse, red road Lying Foal, "chalky" Belgian, glossy dapple grey Clydesdale, Woodgrain FAF lamp, Hartland Horse/Rider sets and many more! Trades considered. Loran and Paula DeFeyer, 16884 James St., Holland, MI 49424.

FOR SALE: Many OF Breyers, some tack, lots of odds and ends. Also possibly some R/R/H's for sale. Send SASE for list. Michelle Zylla, 603 Magnolia, Brea, CA 92621

FOR SALE: Over 50 very good to excellent OF Breyers. Collection includes: OH Yearling, Appy Performance Horse. USET set. Matte bay Running mare & foal - many more. All showable models. SPECIAL OFFER: Mint in box Semi-gloss Mahogany Bay Smooth PAS. Beautiful color & shading! \$50. ALSO: 20 remake prospects, including Stablemates, Classic Arab Family, Clydesdale Mare & Foal, FAS/M/F, misc. Hartlands; available individually, or buy all these remake prospects for \$70. For sales and/or remake prospect list, send LSASE to: Daphne R. MacPherson, 5310 136th Place SW, Edmonds, WA 98020.

CONGRATS TO DARCI SIMMONS, WINNER OF FLEABITTEN GREY CWP! Selling entire collection - over 250 discontinued and special run Breyers (glossy charcoal Fighting Stallion, palomino Running Mare, and MORE!) a few Beswicks and H-R Minis, and Franklin Mint sculptures. ALL BUYERS ENTERED INTO FREE DRAWING FOR LIMITED EDITION SR! SASE To: Tammy L. Wong, 2600-H Laguna Circle, Concord, CA 94520-2990

FOR SALE: Proud Arabian Stallion, Mare & Foal - rose grey, \$37 set. Abdullah \$17. Prancing Arab Stallion - pal., Fade to Grey, & Majestic Stallion, \$15 each. All mint! Postage paid. Check or money order & SASE to Ellen Deen, P.O. Box 8631, Redlands, CA 92375-1831

THE EQUINE CENTER offers proven live show quality customizing, tack, and obstacles, and discount priced OF Breyers. For illustrated catalog, send \$1 (no SASE needed) to: THE EQUINE CENTER, RR1 Box 127, Remsen, NY 13438

FOR SALE OR TRADE: Large Beswick racehorse, JAH Flea-bitten Yearling and pinto Saddlebred Weanling. For details, send SASE to Brenda Frederick, 6220 Murray Ave., Quail Run Apt 6-G, Hanahan, SC 29406

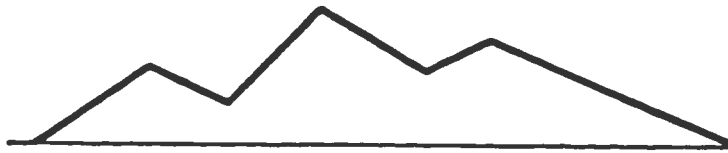
OF, DISC, RR, Breyers, Hartlands for sale or trade. RR models by Strowger, Riveria, Behning, Balum. OF Breyers Dr. Peaches, Mule, red roan Running Mare and Stallion, Hartland Jade. Many more. Send SASE for full list. Send me your want & sales lists too. Pat Reed, 237 N. 20th Ave., Beech Grove, IN 46107

FOR TRADE OR POSSIBLE SALE: Liver chestnut Scratching Foal in excellent condition (have viewing pic) and also "Doctor Peaches" model from Breyerfest. May consider monetary offers but would much rather trade for H-R, Beswicks or other china horses. Send offers to: Diane Knoth, 10486, Stonington Ln., Manassas, VA 22110

Breyers, Hartlands, H-R's and chinas. Please send SASE with your sales/trade/want lists. Trades okay. Reasonable prices. Sharon Carabajal, 4141 Palm Ave., Apt. 333, Sacramento, CA 95842. (916)334-5839

H-R DOGS FOR TRADE FOR H-R HORSES I NEED OR BEST CASH OFFERS: "Bing" Bulldog, matte brown, one almost invisible leg repair. "Gaylord" Collie, glossy brown/white, w/ sticker dated 1953, MINT w/incredible detail. "Nobby" Bulldog pup, glossy grey/brown w/brown shading on ears, MINT w/sticker dated 1955. "Mama Cocker" mini, glossy buff w/newspaper in mouth, MINT. "Sparky" Dalmation pup, matte, MINT, w/sticker dated 1955. "His Nibs" matte buff Cocker, MINT. SASE to Laura Behning, 5639 Pattillo Way, Lithonia, GA 30058

Hey - we have a great new pastime, brought to us by the Corky and Ardith troupe - It's called the First Annual Dapple Grey Hanoverian Torture Test! It seems that the paint on Ardith's JC Penney's 1989 SR dapple grey Hanoverian began to FLAKE OFF when they were cleaning it! Corky called to tell about it, and then called again when another d.g. Hanoverian at a live show had a big spot of paint flake off - underneath it was a DARKER DAPPLE GREY COAT!! Laurle said that she had one she was going to remake - but promised that she would torture it first to see if there was a mystery horse underneath! Laurle? Has anyone else had this phenomenon occur?



Cascade Models

Daphne R. Macpherson
5310 - 136th Place SW
Edmonds, WA 98020
(206) 743-4650

Hartland Collectables has introduced:

Three great new colors!

Cascade Models is pleased to offer the latest Tenite colors from Hartland Collectables. Take a look at these:

- #434 - 9" American Saddlebred in Raven (blue-black)
- #442 - 9" Rearing Mustang in Blue Roan Pinto
- #453 - Grazing Mare in Copper Metallic

The new colors were introduced at the 1990 West Coast Hartland Live Show, and were very popular! Order yours today!!

The full line of Hartland Tenite and Resin models are featured in the Cascade Models catalog. We also carry a wide selection of Sojourner tack, DRM Originals jumps & obstacles in four sizes, Windstone Editions fantasy creatures, a selection of uniquely styled Desert Style Arab halters by Wolf Creek, and gold & silver decorated Arab Wire or Stock halters by Wind Dance. ** Effective August 1, 1990, all Hartland Collectables prices were raised - be sure you have our most current catalog! ** Send LSASE + .45 postage for your catalog today!

SPECIAL NEWS FLASH! The Live Show Special Run for the 1990-91 season is a 9" ASB in GOLD METALLIC with dark facial shading, four white socks, wide blaze & white mane/tail. The initial run sold out at the West Coast Hartland Live show in 10 minutes!! Cascade Models will have these models available at all live shows we attend during the 1990-91 season; look for our sales table. Limited to 1 per customer at live shows only - \$25 each.

All Cascade Models prices subject to change. Please make checks payable to Cascade Models - or charge it with MasterCard or VISA.



Cascade Models

Daphne R. Macpherson
 5310 - 136th Place SW
 Edmonds, WA 98020
 (206) 743-4650

IMPORTANT NOTICE

Effective 1 August 1990, Cascade Models is closing orders for the following resins:

- ☛810 - Peruvian Paso
- ☛890 - Arab Gelding

As of this date, there is a backlog of orders for both these models because of slow production from the casting company. In order to relieve pressure on Paola and Hartland Collectables, and to prevent lengthy delays in delivery to our customers, we will not accept any paid orders for either the Peruvian Paso (☛810) or the Arab Gelding (☛890) until further notice.

All other Hartland Collectables models in Tenite plastic, as well as the resin American Miniature Horses (☛800 & 801), Pocket Pony Quarter Horse (☛850) and Pocket Pony TWH (☛860), are in stock, and may be ordered at any time.

For those customers who "Just have to have" a Paso or Arab, Cascade Models is accepting names for a waiting list. Requests must be written, and accompanied by an SASE. We require your name, complete address and telephone number, plus the quantity, item number and description of the model wanted (i.e. Sally Smith, 123 4th Street, Anytown, WA, 00000 [000] 000-0000. One ☛810, Peruvian Paso). All names will be logged in according to the date we receive the request.

When we are notified by Hartland Collectables that they can fill new orders, we will contact our customers in the order they are logged. Once the customer receives notice that the model they are waiting for is available, they must send full payment and shipping/handling within two weeks of the notice. Please pay by check, money order, Mastercard or VISA only - DO NOT send cash; we are not responsible if it is lost in the mail. Each customer will receive a receipt showing payment received, model ordered and expected shipping date.

Thank you for your patience and understanding in this matter. We wish we could fill all orders for these two beautiful models without delay, but until the production increases, we believe this procedure is the best solution for everyone; Hartland Collectables, our customers, and Cascade Models.

QUALITY RRH MODEL SHOW HORSES FOR SALE:

A few quality horses from my showstring. All are in excellent condition and have pictures. Prices do not include postage. \$3.50 postage per model USA. \$15.00 postage per model Europe. Money orders are preferred. I will consider trades for Deb Preuit and Ray Ann Sneathen horses. Let me know what you have. Please include a SASE with all inquires.

MARGARET DURKA
30 BRAIM ROAD
GREENFIELD CENTER, NEW YORK 12833

1. MEADOW DIAMOND- A Black Beauty RRH by KATHY MAESTAS. Now a trotting Bay thoroughbred gelding. LSQ. Has over 50 pix in halter and performance. \$175.00
2. TUFOXX KITTY - A SHM RRH by Candy Maynard into an overo paint mare now cantering. Live show placed but her off neck is a little rough. Has over 100 pix in halter and performance. A great photo showing mare. \$85.00
3. DQ JUSTA GAMBLE A San Domingo RH by Linda Leach Hardy into a beautiful dun quarter horse gelding. Multi photo show champion. Has over 50 pix in halter and performance. \$90.00
4. DQ QUIBT RIOT- A San Domingo RH by Linda Leach Hardy into a beautiful Leopard Appy gelding Live show placed at MAR 1990. Has some halter and performance pix. \$80.00
5. APPLE BLOSSOM ROSE- Classic Swaps RRH by Sue Guffey into an American Shetland Pony mare with ribbons in her mane. She is in a proper show stance. Comes with pix in halter and harness. Formally called Garnish with Roses. I don't show classics much. \$50.00
6. MS-MOONSHADOW- CM RRH by Margaret Suchow. Head turned to the left. / A beautiful black clysdale mare with white feathers and a white face. Champion photo shower and live show placed at MAR 1990. Has mane and tail decorations and glass eyes. \$75.00
7. Chocolate Mousse- A Cips RRH by Barbara Jones into a gorgeous liver chestnut PASO FINO MARE. Live show placed MAR 1990 and Maine 1990. Has pix in halter, Paso gait. LSQ. \$200.00
8. STRAWBERRY MOUSSE- A Black Beauty RRH by AMARNA into a strawberry leopard appy mare in proper canter. LSQ. \$160.00
9. DARK WITCH- A CM RRH by Janice Meixner into a seal brown clysdale mare now walking with ribbons in her mane and tail. A back leg has had a crack repaired but still LSQ. \$110.00 Has pix in halter and showmanship.
10. Withh's Lady -- A CF RRH by Janice Meixner. Foal of Dark Witch. Seal Brown. \$30.00



- FURY: White, ear-tip gone on right ear, small spots that could be cleaned, reins only.....\$50.00
 Black, white painted socks and diamond, few small rubs, but in good condition.....\$20.00
- WESTERN HORSE: Palomino, gloss, small rub on left hip, few hoof rubs, reins and snap saddle, nice.....\$35.00
- SCRATCHING FOAL: Black Appy, white mark on barrel....\$15.00
- INDIAN PONY: Brown/White Pinto, left ear-tip gone, few small rubs, slight yellow.....\$40.00
- BUCKING BRONCO: Older grey, few small rubs, slight yellow....\$50.00
- FIVE GAITER: Woodgrain, rubs, small bubbles.....\$50.00
- FIGHTING STALLION: Bay w/eyewhites, model rubs.....\$25.00
 Palomino, gloss, pink nose, two small rubs on right hip otherwise beautiful model!....\$50.00
 Appaloosa, small spots up to neck, white belly band, slight yellow.....\$60.00
- MUSTANG: Appaloosa, small split on the top of tail, hooves painted with nail polish otherwise very white, very nice coloring.....\$55.00
- BELGIAN: Smoke, with eyewhites, very scuffed, rubs, yellowed....
\$30.00
- STANDING DONKEY: Very good condition.....\$20.00
- WESTERN PONY: Black, right ear-tip gone. gold off of front hooves, no reins or saddle, finish real good.....\$45.00
- HARTLAND TWH: Walnut Woodcut, mane on left side only, real good condition.....\$45.00

Please make checks/money orders payable to:
 Heather Wells...3985 Strong Street....Riverside, CA. 92501
 UPS shipping..1st model...\$2.00, each add'l \$1.00...must have street address. Any questions, please call, not collect!
 714-684-0247 after 6p.m. California time.....THANKS!!!!!!

MODELS BY JENSEN

32891 CALLE DEL TESORO, S.J.C. CA.

~ 92675 • (714) 661-1116

All have carved ears, heels, upraised hooves.
Money refunded if not satisfied. (Return
horse promptly!) \$5 discount for m.o., IN FULL.

① Khemosabi repaint/hair to lovely light
dappled grey with some fleabites. Lovely
face! \$75.00 + post.

② Hanoverian repaint/hair into black
and white Appaloosa Sport Horse. Pulled
mane, banded tail. Eye-catching!
\$85.00 + post.

③ Morganglans repaint/hair/head lowered
into striking BLACK color. Braided
mane, banded tail. small amt white
on all four feet, small face marking.
\$105.00 + postage.

Sorry, no holds without down payment.

*****AT AUCTION*****

A & P WAGON WITH DAPPLE GREY OLD TIMER---new in box, pictures available. Seen in the July/August issue of Just About Horses in 1990, it was produced in 1984 as a commemorative edition for McCormick.

DR. PEACHES-Breyerfest model for 1990. Bay Phar Lap with black points, star, stripe. Mint condition, pictures available.

Also have approximately 100 models for sale, including SOLID BLACK FAMILY ARAB FOAL, WOODGRAIN QH, WESTERN PONIES AND HORSES, AND MANY SPECIAL RUN MODELS AND DISCONTINUED MODELS.

WANTED: BLACK MUSTANG, BAY BALKING MULE, KITTENS, BREYER RIDERS & TRAINERS, PACERS IN DAPPLE GREY AND PALOMINO, GLOSSY CLYDESDALE STALLION (BAY), OLD GREY BRONCO, LIVER CHESTNUT SCRATCHING FOAL, WOODGRAINS AS FOLLOWS: CLYDESDALE BELGIAN, SHETLAND, MORGAN, MUSTANG, PROUD ARAB MARE, DARK FIGHTING STALLION, ALL ANIMALS, WESTERN PONY, RUNNING MARE & FOAL. HAVE DR. PEACHES AND A & P WAGON FOR TRADES!!!!

For information on auction and saleslist:
send LSASE to:

LYNN WOODRICK
8000 WARREN WOODS RD., LOT 74
THREE OAKS, MI 49128
(616) 469-0982

SALE: I want to add another miniature donkey to the family, BUT I need to have \$\$ for transportation fees etc. so please look the list over! NO trades, but time payments of 45 days/less are fine. All are TOP quality! SASE to view pic or for a reply. Many thanks! Nancy Olson, Rt.1, Box 25, Fairfax, MN 55332-9708 ALL ARE PPD VIA UPS!!

MULE customized by L. Jensen, pacer rem. cantering, resculpted head, ears added, hair m/t, bay blanket app. LSQ, pic for insp. \$125
HR DW Saddlebred in brown matt, crisp detail, pic for insp. \$100, mint
BESWICK Conn. Series TB, matt bay on base, mint, pic for insp. \$105
ANDREA BY SADEK china app, chest. w/blanket/spots, on base, lovely detail & color, pic for insp. Trad. size approx. \$52
~~BLACK HORSE RANCH resin TB in dap. bay, stockings, blaze, mint on base, pic for insp. \$105, he's very heavy!!! SOLD~~
FRANKLIN MINT 'Noble Horse' sculptures. 6" on bases, detailed, Photocopy of catalog for viewing. Have QH, App, Arab, Lipizzan. All mint \$85 each
BREYER old smoke Belgian, grey w/white m/t, mint, no pix \$70
FREEMAN McFARLIN lying unicorn, large trad. size, gloss wh. w/grey shadings very detailed and CUTE!! No pix, mint. \$20
HR sheep Ewe, matt white w/blk face/legs, bell on neck, mint, no pix, \$40
HR sheep lamb, matt white, blk. face/legs, mint, no pix \$22 PAIR FOR \$60
OF BREYERS: no pix, all ex. cond. class. and. foal \$6, buck. mustang \$12, Man O War \$12, Secretariat \$12, POA, bay blk. \$15, class. blk. beauty \$7, Blk. stallion \$12,
BESWICK #1991 Mare in matt dap. gr, mint, no pix, \$60

PLEASE look the list over and help me add a sweet mini donkey jack foal to our family!!! THANKS....

FINAL CLEANING-OUT SALE



WIZARD'S
V · A · L · E

The following items are being sold as a final clean-out of my showing hobby involvement, and a reduction in the size of my collection. No trades are accepted, time payments will be taken, but must be paid off in 3 months and must put 25% down. Failure to make payments according to schedule will result in loss of model and payments to date.

Wizard's Vale is officially closed as a custom-remaking studio, so please do not inquire about custom work. I own only one example of my work, so I have no existing work to sell, either!

Address all inquiries to:

Karen Y. Gerhardt, 51 Carnegie Ct., Middletown, NJ 07748 908-671-8788 After 6pm weekdays is best if you want to reach me, as I am in and out on weekends.

Please note that all items are in mint condition unless noted. Postage is not included.

BESWICKS

1. Connoisseur Series "Moonlight", Anglo-Arab type, matte dapple grey on ceramic base. About 11" tall. Mint, lots of nice grey shading. \$160.
2. Conn. Series "Sunburst", same mold as above, in much rarer palomino matte. \$200.
3. Beswick CAMELS: a rare find, Camel "mare" and "foal", disc. since about 1971. Mint cond. except that the "mare" has crazed glaze. About 6" tall, gloss finish, beautiful paint/color. Set for \$150.
4. Bois Roussel Racehorse, gloss brown, mint. \$40.
5. Xyal Arabian Stallion, rare Charcoal black/grey. \$100.
6. Xyal Arabian Stallion, gloss dapple grey. \$50
7. Foal #1407, generally referred to as the "Arab" foal, gloss brown. \$25.
8. Foal #1407, gloss dapple grey. \$25.
9. Large Racehorse (11 1/4") #1734, gloss dapple grey. \$250.
10. Conn. Series Morgan, mint except that the name label has been moved from the top of the base to the underside. \$200.
11. Bois Roussel Racehorse gloss grey, older model, better detail. \$55.
12. Arab #1771, gloss brown, owned since 1978, repaired eartip. \$35.
13. Arab #1771 Conn. Series matte dapple grey/black points, REMOVED FROM BASE. \$100.
14. TB #1772, gloss dapple grey. \$40.
15. TB # 1772, gloss brown. \$40.
16. Mare # 976, matte brown, better detail and nicer shadings than most. \$60.
17. Spirit of Youth (Black Beauty mold) in rarer gloss brown. SUPER detail, great color. \$100.
18. Pinto Pony, (shaggy "gypsy" type), brown/white gloss. \$85.
19. Pinto Pony, same as above only black/white gloss. \$85.
20. Palomino #1261, older gloss palomino, had since 1975. \$80.
21. Foal #996, gloss brown. \$25.
22. Foal #996, gloss palomino. \$25.
23. Old "Pony" # 1197, gloss brown, \$80.

HAGEN-RENAKERS

1. Zara Arabian Mare 9", San Marcos issue, mint gloss white with lots of grey shading, black/rust eyes. \$200.
2. Amir Arabian Stallion 9", San Marcos issue, mint gloss rose grey with great color, very red mane/tail and rose and grey shadings. One of the last made, I was told. \$200.
3. Quarter Horse Mare/Foal, 6" San Marcos issue. Mint gloss bay, eyewhites. Mare \$40., Foal \$20.
4. Zilla Arab foal, San Marcos 7", gloss rosegrey exactly matches above. \$150.
5. Zilla Arab foal, San Dimas 4", matte white excellent detail, \$175.
6. Amir Arab Stal., San Dimas 6", matte doeskin, exceptional detail, cracked glaze. \$150.

(List continues on next page)

Wizard's Vale Sale continues (H-R's)

7. Mini Running Colt #A235 matte grey, brown painted eyelashes/eyes. Invisibly repaired tail. \$45.
8. Man O'War, San Dimas 2 stickers intact, stunning detail and color. \$175.
9. QH Mare San Marcos #75, RARE gloss rosegrey w/black points, even RARER pink snip on nose! \$150.
10. QH Stallion San Marcos 6", lovely gloss golden bay, not the darker red-bay—almost chestnut! Has stockings instead of socks, eyewhites. \$60.
11. Monrovia Fawn-"Twinkle", intact sticker, absolutely mint w/all hand-painted details. \$50.

BREYERS

1. PAS mahogany bay, "Witez II", exceptional color and shading from gold to deep bay. Semi-gloss w/coat texture not seen as well on later models. Just stunning, live show champ, has pix. \$50.
2. PAF mahogany bay to match above, same mint cond. \$35.
3. PAM mahogany bay, NOT match to above, more uniformly redder but still older semi-gloss, few rubs and nicks. \$20.
4. Woodgrain FAF, absolutely mint, BUT is an oddity as it has "Taffy" ENGRAVED in very stylish script on its off-side belly, and "New York" on its neck! Anyone know about Breyers being used as souvenirs in NY 'way back when? Possibly a collectible, found recently in an antique store in NJ. \$35.
5. Unpainted Breyers: Trakehner, Quarter Horse (the one with the molded-on bridle), Stud Spider. Each \$20.
6. The following Breyers are in rubbed condition, suitable for repainting or remaking. Each adult: \$8., each Classic or foal \$4. Take all for \$45., and I may even dig up a few more to throw in as a surprise!

Yellow Mount	Clydesdale Mare	Clydesdale Foal	Rugged Lark	Misty (\$6.00)
Clas. Swaps	PA Mare, tail cut off from leg		Classic Sgr	
7. CIPS, removed from original box only to remove clips, chosen when they first were released for excellent color and pattern sharpness. \$25.
8. ABDULLAH, removed from original box only once, to remove clips. Chosen at a dealer from among many others, when they were first released, to pick the best color. Lots of grey shading, subtle details (no lines) really nice example of a model that varied a LOT. \$35.
9. Breezing Dixie, same as above chosen for best color, etc., has hand-painted grey hooves which were seen only in the early lot produced. (Later models do not have this detail.) Also, much better mold quality— all 4 hooves squarely on the ground and not misshapen, no mottling on neck often seen in later issues. All in all a superb example of this model. \$55.

TACK

1. Fine Show Harness, made specifically for a Beswick Conn. Morgan, but will fit the large Trad. Breyers such as the Trak. Black Leather w/blue accents on girth and bridle. Has won many times for me, made by Kim Cassida. \$30.
2. Western Saddle by Bensema-Young, fits PA mare, etc., round-skirt. Black w/brown accents and tooling, silver accents but not overdone. A good all-around saddle. Breastcollar, string girth, hobbles, double-rigged. \$45.
3. Huntseat saddle by Sue Rowe, fits Artist Series and Large Classic Breyers, bought to use on normal-size-range Beswicks. Black seat w/rust underleathers and accents, leather girth, cast stirrups. \$25.
4. Full-cheek snaffle bridle by Sue Rowe, black, to match/fit above saddle. \$15.

Carol Rieger
5322 W. Howard Ave.
Milwaukee, WI 53220

Phone: 1-414-327-6544
No collect calls please!
Call between 8:00pm-10:00pm CST

Hi! This is my first sales list. Because my daughters don't want to sleep in the same room anymore, I'm losing my "horse" room! All models will be shipped postal after checks clear. Shipping: \$2.75 1st model, \$1.00 each additional model. I hope you find something you like!

SR Lady Phase: red roan, signed: ex	\$30.00
SR Bucking Bronco, grey: ex	\$40.00
SR Bucking Bronco, red roan: ex	\$40.00
SR Sears Hanoverian, grey: ex	\$25.00
SR Sears Halla, fleabit grey: ex	\$20.00
SR Sears Morganlanz Bay: ex	\$25.00
SR Penny's Tennessee Walker, blood bay: ex	\$20.00
SR Penny's Action foal, peppercorn: ex	\$15.00
SR BHR Indian pony, bay: ex	\$25.00
*32 GI Fighting App Stallion: chipped ear, bad finish on back	\$10.00
*35 Fighting Stallion, bay: ex	\$15.00
*47 Man-O-War: scratches-rubs	\$10.00
*48 Morgan, black stretch w/star: ex	\$20.00
*59 Morganlanz: one small rub on nose tip	\$15.00
*60 Midnight Sun Tennessee Walker, black: scratches, rubs	\$10.00
*65 Justin Morgan: ex	\$15.00
*68 Legionario III: ex	\$15.00
*83 Clydesdale Mare, chestnut: bent ear, scratches rubs	\$10.00
*85 Azteca, dapple grey w/white tail: ex	\$20.00
*88 GI Charcoal Mustang: scratches, rubs, re-painted face	\$15.00
*89 Black Beauty: scratches, rubs	\$10.00
*94 Belgian, chestnut: good	\$20.00
*94 Shire, dapple grey: ex	\$30.00
*118 Mustang, light chestnut: ex	\$15.00
*124 Running Mare, bay: ex	\$15.00
*134 Running Foal, bay: ex	\$10.00
*154 POA, bay app: one rub on back	\$15.00
*174 Indian pony, bay app: ex	\$25.00
*209 Pegasus: ex	\$25.00
*215 PAM, dapple grey: good	\$15.00
*220 PAF, dapple grey: ex	\$ 7.00
*221 Stock Stallion, buckskin: ex	\$15.00
*224 Standing Stock Foal, buckskin: ex	\$ 7.00
*300 Jumping Horse, bay w/jump, scratches	\$15.00

*315 Nursing Mare, bay: rubs-scratches	\$10.00
*410 Sham, bay: scratches	\$10.00
*415 Buckshot, blue roan: scratches	\$ 7.00
*450 Rugged Lark: ex	\$15.00
*703 San Domingo, grey blanket App: ex	\$15.00
*711 Breezin' Dixie, one barrel rub	\$20.00
*817 Abdullah: ex	\$16.00
*465 Rohemer: ex	\$16.00

RRH Unique! Hobo remade to a black pegasus with real taxidermy bird wings! (the wings are removable for packing) He has carved ears, nose and hooves. His stand has been sculptured and painted to look like clouds! He has been live shown successfully, but never photo shown. Photos on request with \$2.00 deposit and SASE. Only serious inquires please. \$55.00

EXCEPTIONAL MODELS

Available From

Betsy Andrews
1622 Chesapeake Dr.
Woodland Beach
Edgewater, MD 21037

AUCTION!
One-of-a-kinds!

AUCTION!
Special Runs!

All of the models listed below are very rare finds -- some are "one-of-a-kinds." All are matte finish and in excellent condition unless otherwise noted.

1. Stock Horse Mare - grulla or sandy bay with dark points. Unusual color! Small white mark on face, tiny mark on neck, dark spot on hip (hard to see). One-of-a-kind. Live and photo show Grand Champion. SB: \$150.00

2. Sham - in a reddish chestnut, very rich in body color, four white stockings, grey hooves, mane the same color as the body, tail is lighter. Pinpoint white mark on hind leg, otherwise mint. One of about 25 produced. SB: \$150.00

3. Proud Arab Mare - black with white stockings and face. One of about 50 made for the 1986 Breyer Sponsored Live Shows. Excellent condition. SB: \$200.00

4. Foundation Stallion - medium solid reddish chestnut with white stockings. White mark on hind leg, factory flaw on hind leg, otherwise great condition. One-of-a-kind. SB: \$150.00

5. Cantering Welsh Pony - light dun with greyish zebra stripes on upper legs. White face and stockings. Ten were made; I have five. Four are in excellent condition; one is near mint. SB on excellent: \$400.00 each; \$300.00 on the near mint.

6. San Domingo - semi-gloss black, but with "masked" out blaze on face and white stockings, pink hooves. One-of-a-kind. SB: \$150.00

Buckskin Running Foal - SB \$150.00
Black Family Arab Stallion - SB \$150.00
Chestnut Proud Arab Mare - SB \$75.00
Light Chestnut Saddlebred Wean. - SB \$75.00
Chestnut TWH - SB \$75.00

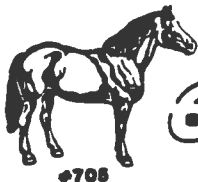
I can provide documentation on each of these models as to when I purchased them and from whom. Inspection photos are available for \$1.00 per photo + SASE.

These models were recently all offered for trade, but as I had very few offers, I've decided to auction them. However, trades will still be considered for the following models: Old Mold Family Arab Mare in bay, appaloosa or woodgrain; 5-Gaiter in glossy carmel palomino; woodgrain Clydesdale, Belgian or Mustang; the old smoke Belgian; Pacer in dapple-grey or palomino; scratching foal in liver chestnut; bucksking Running Mare; glossy bay Clydesdale stallion with eye-whites; bay or grey bucking broncos. Models should be in near mint or mint condition.

For those bidding: please bid in whole dollar amounts. Send SASE for current bid information. You may bid by phone - 301-956-3132 between 6-9:00 p.m. weekdays, 9:00 a.m.-9:00 p.m. weekends, EST. I reserve the right to pull any piece from this list.

Bid deadline: November 16, 1990 at 9:00 p.m. Payment must be received within one week of deadline (unless other arrangements are made). Models will be shipped after check clears.

Black Horse Ranch



Year End CLEARANCE!

USET SPECIALS



The following models are overstocked items and are priced to move fast!
Use regular order form and add UPS shipping charges.

SPECIAL RUN

RED ROAN LADY PHASE

1989 signing party limited edition. A favorite mold for repainters.
Suggested price is \$20.00 each. BHR priced at ~~\$20.00~~
\$12.00 ea

SPECIAL RUN MUSTANG

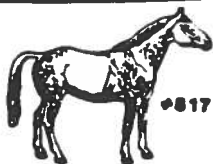
BHR EXCLUSIVE (made for us and not available anywhere else)
Only a few of these colors left: FLEA BITTEN GREY, MATTE ALABASTER,
RED DUN, PALOMINO, and a few BLACK LEOPARD APPALOOSA. Mix and match
any quantity & color, \$12.50 each until sold out.

SPECIAL RUN CHRISTMAS HORSES

Classic USET horses from 1988. Only standing red chestnut and cantering
bay left. Your choice, mix and match \$6.50 each, or 2 for \$12.00.

4 for \$20

DISCONTINUED



#817

#17 ABDULLAH

1989 limited edition. NO LIMIT \$12.50 each

118 MUSTANG

Chestnut with flaxen mane & tail. \$13.50 each

60 MIDNIGHT SUN

Black Tennessee Walker, discontinued 1988. \$14.00

118 CIPS

1987 ltd. edition; bay/white pinto Paso Fino.
Less than 1987 prices!! \$18.00 each

426 PRANCING ARAB MARE

Red chestnut w/ flaxen mane/tail \$12.00 each.

124 RUNNING MARE BAY \$15.00 each

134 RUNNING FOAL BAY \$7.50 each

SET OF MARE & FOAL \$21.00

225 ACTION STOCK FOAL BUCKSKIN \$7.00 each

228 STANDING STOCK FOAL BAY \$7.00 each

EUROPEAN EXPORT HORSES

Not available in the USA. Special run for Germany & UK.
Your choice of Classic GM Stallion in black Appaloosa with
extended large spotted blanket w/stockings or Classic GM Mare
in medium brown & white pinto. \$13.00 each.

JOHAR & FOAL SETS

1988 signing party special run. Johar is a white w/ rose grey
shading; foal is a shaded chestnut. \$12.00 each set.

PRICES GOOD UNTIL 12/31/90 or UNTIL SOLD OUT



#118



#60



JOHAR SET

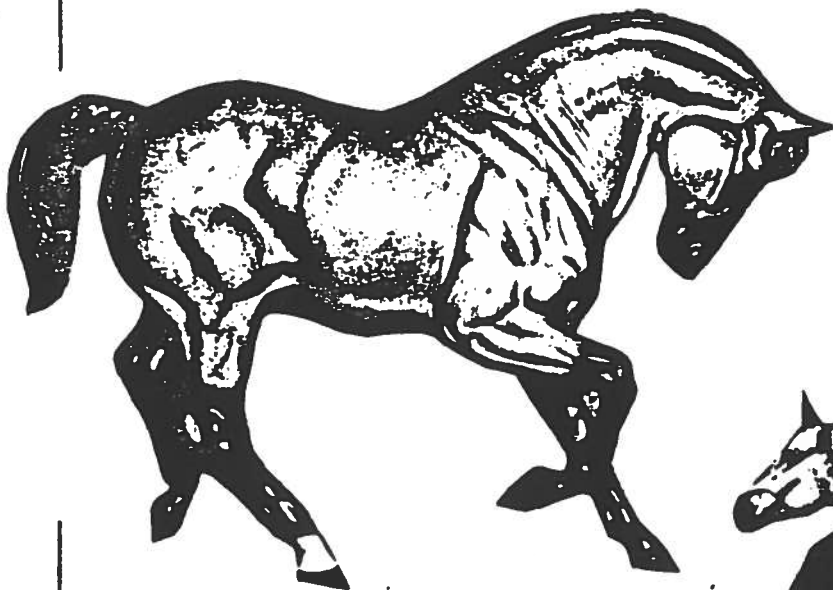
BLACK HORSE RANCH
presents
special run limited edition models from
Hartland Collectables

"DUN IN DREAMS"

11" QH mold in red dun. Patterned after the real Appaloosa filly owned by BHR. This filly was born 1/12/90, a daughter of Nat'l & World Ch. Appaloosa stallion DREAMFINDER out of our 1989 Nat'l Top Ten Mare, Makin' Music. The model is a striking red dun solid with dorsal stripe, 1 hind sock & blaze & snip. Made in Tenite plastic and available only at BHR. Only 250 pcs. made. Price is \$21.75 each plus shipping, or 2 for \$39.00.

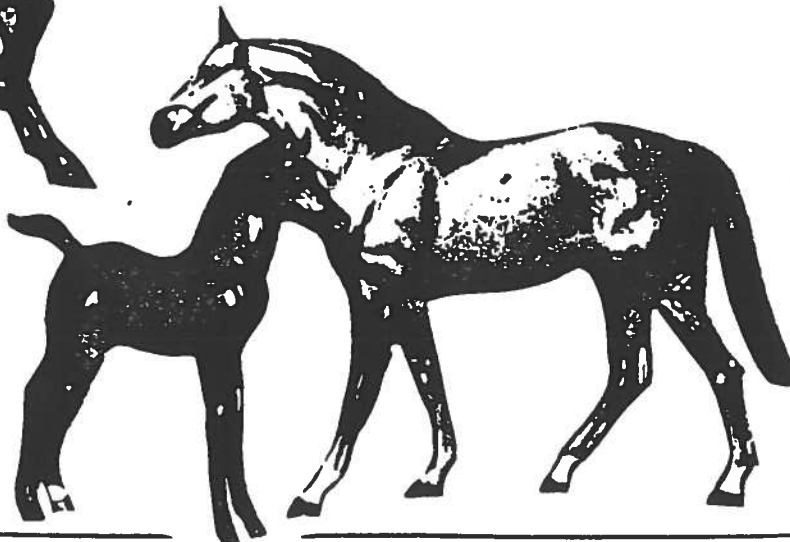
"SCAMMER & BLACK EMBERS"

9" Thoroughbred mold & weanling mold. Mare is patterned after the real BHR TB mare Scammer, a very dark black dapple, with bright dappling. The foal is a black with hind sock and star face. It is patterned after our 1990 TB filly, sired by our black stallion, T'S POP TOO. Only 250 sets made, serialized. Sold as a set only. Priced at \$28.00 plus UPS or 2 sets for \$55.00 with free shipping. (For UPS charges, the set is equal to one model)



BLACK HORSE RANCH

10400 Johanna Ave., Shadow Hills, CA 91040



WANTED WANTED WANTED WANTED WANTED WANTED WANTED WANTED

W A N T E D

- **J.C.Penney 1987 Christmas Catalog..would like to have colored original page...full frame picture okay...will pay cost of photo.
- **Any pre-1983 Christmas catalog from J.C. Penney, Sears and Wards
- **Hagen-Renaker Designer Workshop Texas Longhorn, Grizzly Bear, any Bear mold, Swan, Toulouse goose, 1950's Pheasant, Mountain Lions, Rocky Mountain Sheep, Impala, Zebra baby, Giraffe Mom & Baby, Worms, Chipmunks, Flopsy, Cape Buffalo, Pronghorn Antelope, Harry the Hare and Tommy the Turtle.
- **Breyer Siamese Kitten, Rin Tin Tin, solid face Bay Morgan, Wood-grains: Boxer, Morgan, Poodle, Mustang, Clydesdale, Western Pony and Elephant.
- **Hartland 9" Tan TB, 9" Blue Roan & Buckskin Polo Pony, 9" Five-Gaiter in White & Tan, 9" Arab in Grey. Most 11" Regal Series
- **Heather Wells..3985 Strong Street..Riverside, CA. 92501..... home phone after 6 p.m. 714-684-0247...Stamp refunded!!!! Help me find some of these...please! Have items for trade, will pay cash...let me know what you'd like.....Let's Deal!!!!

w A N T E D



MISCELLANEOUS MISCELLANEOUS MISCELLANEOUS MISCELLANEOUS

The Eastern Model Horse Association has something for you! Featuring monthly shows, year-end awards, a unique registration service, opportunities to advertise and more! A SASE gets you all of the details! Check us out and be sure to enter our August benefit show! We've got what you're looking for! EMHA c/o Melanie Caveallero, 1110 E. Forest Grove Road, Vineland, NJ 08360

The Model Showring - Now in its second year! Join the fun today - monthly point shows, benefits, year-end Nationals & awards. Linda Watson-McCormick, 14606 SE 198th St., Reuton, WA 98058

MOVING NOTICE: (not one that will bring you to tears, but one that will bring me to a new abode!) Cathy von Matt, Juniper Ridge Farm/ Creations, The Model Horseman and The Thunderbird International will be moving to: 9095 Nowell Street, Chilliwack, BC CANADA V2P 4W4. All mail addressed to the old homestead will be forwarded...don't worry.

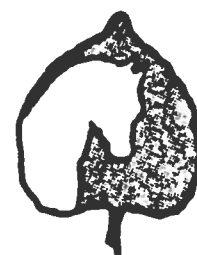
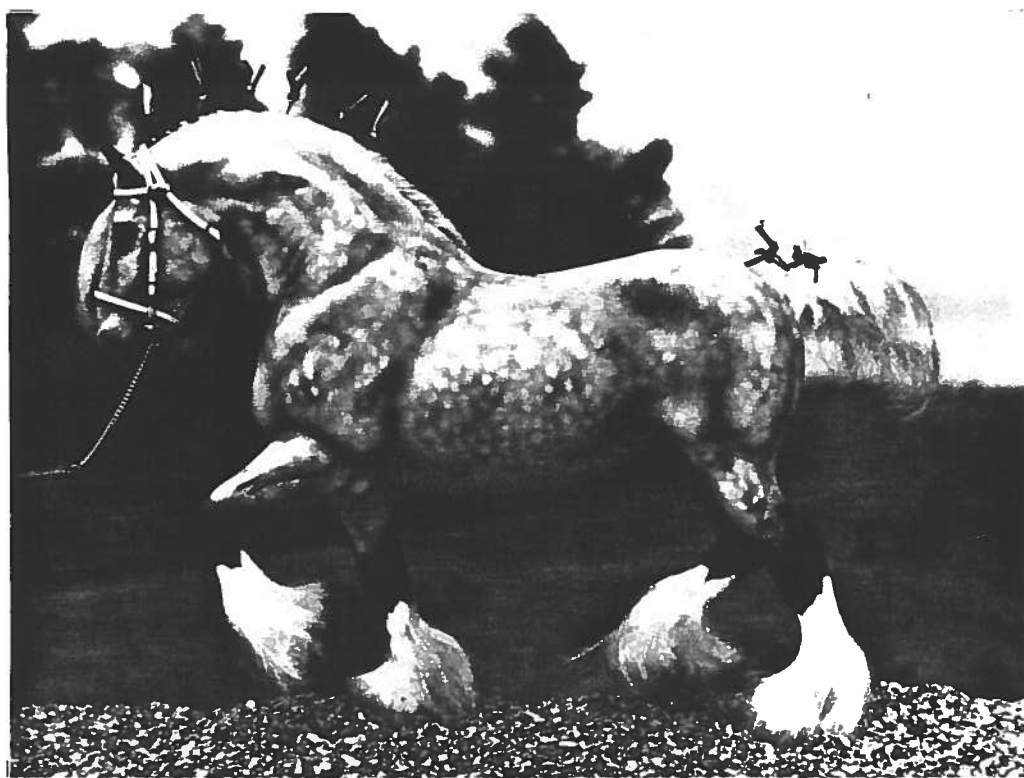
*Foxcroft Lad

Imported Dapple Grey Shire Stallion
 (Breyer Clydesdale Mare customized by Keren Woods, England)

1989 - 1990 Live Show Record

**California Live,
 Oct. 8 - 9/89**
 Champion RR Harness/Costume
 Champion RR Stallion
 Grand Champion RR

**Breyer/Hartland World
 Championships, May 19-20/90**
 Res. World Champion Halter
 Champion Draft Performance
 Champion Draft Halter
 Grand Champion Draft



**Western Regional Congress,
 June 23-24/90**
 Champion Customized Draft Performance
 Champion Customized Draft Halter
 Grand Champion Cust. Draft

**Thunderbird International,
 July 21-22/90**
 Res. Champion Cust. Draft Halter
 Champion Customized Stallion
 Grand Champ Cust. Draft

Shining Aspen is very proud to own and show *Foxcroft Lad -
 Thanks to Keren Woods for creating him, and to Nancy Olson for selling him to us,
 and a BIG THANKS to the judges at all the above shows for judging him so highly!

Watch for *Foxcroft Lad and the rest of our show string at future live shows!

SHOWTIME SHOWTIME SHOWTIME SHOWTIME SHOWTIME SHOWTIME

HALLIE HO FARM'S ALL-HALTER ALL-O.F. PHOTO SHOW. January 15-19, 1991. Ribbons 1-10. Low entry fee. SASE: HALLIE HO FARM, 1845 Michelbook Lane, McMinnville, OR 97128-2419

The Fifth Annual Shining Aspen Live Show will be here before you know it!! Scheduled for late April, 1991, the two-day event will feature an expanded classlist, OF, RR & Novice Divisions, and Grand Awards by Breed (Draft, Gaited, LIGHT). Plus - potluck dinner, sales, raffles, door prizes & fun!! Watch for details in this space!!

HALLIE HO EXPO. May 18, 1991. McMinnville, Oregon. All-Halter, All Original Finish Breyer and Hartland models. Two Divisions - Open and Novice. Two collectors classes - Open and Junior (age 16 and under). LSASE: Julie Wilkowski, 1845 Michelbook Lane, McMinnville, OR 97128-2419.

1990 LIVE SHOW LISTING

NOV 17 - Joan Berkwitz All Halter Show

DEC 15 - Christmas Party at Laurie Jensen's (Sell/Trade/Swap/Eat)

JAN 1991 - Second Annual South Coast Classic, Ventura, CA. Contact Darian Buckles, Bonnie Robb or Laurie Jensen for details.

Looking forward to



The Eleventh Annual
**Mid-Atlantic Regional
 Horse Show**
 April 6-7, 1991
 Edgewater, Maryland

Over 120 Classes

Divisions to include: Open, Intermediate, and Novice
 With Special Classes for: Little Bits/Stablemates and Original Finish Models
 Judges to include:
 • Betty Andrews • Julie Bullock
 • Elizabeth Bourne* • Cindy Turner* • Susan Radnicki
 • Invited

Plan to Attend!

Show Entry Packet Available November 1, 1990, send a double stamped large self-addressed envelope to Betty Andrews, 1622 Chesapeake Drive, Woodland Beach, Edgewater, MD 21037

Raffles - Auction - Doorprizes



Mid-Atlantic Regional Horse Show

THE 1990/1991 MID-ATLANTIC REGIONAL HORSE SHOW BENEFIT SERIES

The following shows are being offered as benefits for the 1991 MAR Live Show. Your participation help make MAR a better show. AND WE NEED YOUR SUPPORT. You also can help by holding your own benefit show for MAR. For a show to qualify, all proceeds (over advertising/copying expenses) must go to MAR and full results must be sent to Carol Mathews, 3903 Napoleon Place, Bowie, MD 20716, within three weeks of the show date. Please mark photos clearly, as long as photos are clearly marked you may send entries for multiple shows together, make sure you send the correct entry fees and don't forget to send enough SASEs for results.

MAR Monthly Benefit Show Series -- Aug. 10, Sept. 10, Oct. 10, Nov. 10, Dec. 10, Jan. 10, Feb. 10, and Mar. 10.

- | | | | | |
|----------|------------|------------------|----------------|---------------|
| 1. Stal. | 6. QH | 11. Sad/TWH/Morg | 16. Other Brey | 21. Rep. Only |
| 2. Mare | 7. App | 12. TB/WB/Sibd. | 17. H-R | 22. Rep. Hair |
| 3. Geld. | 8. Pony | 13. Other Pure | 18. Other Mold | 23. RRH |
| 4. Foal | 9. Draft | 14. Mix | 19. Disc. OF | |
| 5. Arab | 10. Pin/Pt | 15. Breyer Trad. | 20. Cur. OF | |

FEE: \$1.00 per stable. US Funds Only. RULES: No more than 40 photos per entrant, please. Judges choice of stable stars and many Champ/Res. named. No postage dues accepted. Send all entries to: Carol Mathews, MAR Benefit Coordinator, 3903 Napoleon Place, Bowie, MD 20716. Write show date on envelope. Full results to all entrants.

MAR All Commercial Ribbon Shows -- Aug. 25-30, Sept. 25-30, Oct. 25-30, Nov. 25-30, Jan. 25-30, and Feb. 25-28.

- | | | | | |
|----------|------------------|----------------|----------------------|------------------|
| 1. Stal. | 7. App | 13. Other Pure | 19. RRH | 25. Part/Gained |
| 2. Mare | 8. Pony | 14. Mix | 20. West. Pla. | 26. Harness* |
| 3. Geld. | 9. Draft | 15. Cur. OF | 21. Eng. Pla. | 27. Versatility* |
| 4. Foal | 10. Pin/Pt | 16. Disc. OF | 22. Trail* | |
| 5. Arab | 11. Sad/TWH/Morg | 17. Rep. Only | 23. Cut/Bar/Pol/Rop* | |
| 6. QH | 12. TB/WB/Sibd. | 18. Rep. Hair | 24. Hunt/Jump* | |

FEE: \$4.00 per stable. US Funds Only. RULES: NEW COMMERCIAL RIBBONS 1st - 4th in all classes, ribbons to Champ/Res., and Rosettes to Grand/Res. No more than 40 photos per entrant, please. * Trail may be English, Western, or Harness; Classes 22, 23, & 24 one photo per horse please; Harness may be light or heavy. Versatility requires 1 halter and 3 performance pos. Many Champ/Res. named. No postage dues accepted. Send all entries to: Carol Mathews, MAR Benefit Coordinator, 3903 Napoleon Place, Bowie, MD 20716. Write show date on envelope. Full results to all entrants.

For all shows listed above - judges will NOT supply return postage for return of photos/results.

PUFFTHEMAGICDRAGON STABLES' THANKSGIVING PHOTO SHOW

Send entries to: Natalie W. Dudchenko,
 Nov. 22 - 26, 1990 P.O. Box 82, Valley Forge, PA. 19481.

- | | |
|---|--|
| 1. OF STALLIONS | ENTRY FEES: |
| 2. RRH STALLIONS | \$4.00 unlim. per stable |
| 3. OF MARES | \$1.00 unlim. per model |
| 4. RRH MARES | |
| 5. OF FOALS/YEARLINGS | * Classes will be split/
combined/cancelled as
seen necessary by the
judge. |
| 6. RRH FOALS/YEARLINGS | |
| 7. OPEN GELDINGS | |
| 8. OPEN HALTER | |
| 9. STANDING CONFORMATION | |
| 10. ACTION CONFORMATION | AD FEES: |
| 11. OF SHOWMANSHIP (Headgear req.) | \$.50 - quarter page |
| 12. RRH SHOWMANSHIP (Headgear req.) | \$1.00 - half page |
| 13. ARABIANS | \$1.50 - full page |
| 14. THOROUGHBREDS/STANDARDBREDS | \$.01 per word -
classified ad |
| 15. ANDALUSIANS/LIPPIZANNERS | |
| 16. APPALOOSAS (Breed) | |
| 17. MORGANS/PASOS | * Send a LSASE & extra
stamps for return of pix
& results. Unused stamps
will be returned. |
| 18. MUSTANGS/BARBS | |
| 19. PAINTS | |
| 20. QUARTER HORSES | |
| 21. ASB/TWH/NSH | |
| 22. HANO/TRAK/OTHER EUROPEANS | AWARDS: |
| 23. PONIES | Placings 1st - 10th and
HMs in every class. |
| 24. DRAFTS | Commercial flats 1st - 3rd
in every class. |
| 25. OTHER/HALF/MIXED BREEDS | Comm. rosettes to Champion
and Reserve Stallion,
Mare, Foal/Yearling,
Gelding, Overall Halter
and Performance. |
| 26. BAYS | Large comm. rosettes to
Grand and Reserve Grand. |
| 27. BLACKS/BROWNS | |
| 28. GREYS (All shades) | |
| 29. BUCKSKINS/DUNS/PALOMINOS | |
| 30. CHESTNUTS/SORRELS | |
| 31. APPALOOSAS (Color) | |
| 32. PINTOS | |
| 33. ROANS/OTHER COLORS | |
| 34. ENGLISH PLEASURE | |
| 35. ENGLISH TRAIL (obstacle required) | |
| 36. HUNTERS/JUMPERS (obstacle required, state which) | |
| 37. SIDESADDLE/PARK/DRESSAGE (for Dressage state movement) | |
| 38. OTHER ENGLISH PERFORMANCE (state what) | |
| 39. WESTERN PLEASURE | |
| 40. WESTERN TRAIL (obstacle required) | |
| 41. WESTERN WORKING (cut/rope/herd/etc., obstacle required) | |
| 42. POLES/BARRELS (obstacle required) | |
| 43. GYMKAHNA/REINING/OTHER WESTERN (state what) | |
| 44. OPEN HARNESS (state type) | |
| 45. OTHER PERFORMANCE (state what) | |
| 46. HEADSTUDY (Heads only!) | |
| 47. MASCOTS/OTHER ANIMALS (No horses!) | |
| 48. STABLE'S BEST (3 per stable) | |
| 49. OF JUDGE'S CHOICE (All entered) | |
| 50. RRH JUDGE'S CHOICE (All entered) | |

PROJECT 88 BENEFIT SERIES

AMPCA 2X MAHC 2X MESEA 2X MQHC&R 2X WMEA +10

ENTRY FEE: \$1.00 LIMIT 10 PHOTOS . Many Chp/Res named

This show is just one of a group of four shows to be held each month by PROJECT 88. See AMHCD, ARENA, THE HOBBY HORSE NEWS, and MODEL HORSE RAG for other shows' classlist or send an SASE to Mary Vandergrift, Rt. 2 Box 185 A, Mason, TN. 38049 for classlists for all four shows.

A Prize Drawing will be held with the names of all show entrants eligible for prize. Winner will be notified.

For list of Drawing Prizes, contact address above

SHOW IV: ALL PERFORMANCE

CLASSLIST

- | | | |
|-----------------------|---------------------|----------------------|
| 1. Western Pl-stock | 16. Rein. cowhorse | 31. Conform. Hunter |
| 2. Western Pl-other | 17. Cutting | 32. Handy Hunter |
| 3. Western bareback | 18. Reining | 33. Hunter |
| 4. Huntseat Pl-stock | 19. Calf roping | 34. Jump |
| 5. Huntseat Pl-other | 20. Steer Roping | 35. Three Day Event |
| 6. Saddleseat-stock | 21. Team Roping | 36. Cross Country |
| 7. Gaited Saddleseat | 22. Calf Penning | 37. Dressage |
| 8. Oth. Sadd/Park | 23. Barrels | 38. Pleasure Driving |
| 9. Eng. Bareback | 24. Poles | 39. Gaited Harness |
| 10. Sidesaddle | 25. Flag race | 40. Fine Harness |
| 11. West. Arena trail | 26. Stake race | 41. Draft Harness |
| 12. Nat. West. trail | 27. Keyhole race | 42. Other Harness |
| 13. West. Riding | 28. Oth. West Games | 43. Obstacle Driving |
| 14. Eng. Arena trail | 29. Eng. Games | 44. Street Parade |
| 15. Nat. Eng. Trail | 30. S/W/T Games | 45. Formal Parade |
| | | 46. Indian Costume |
| | | 47. Arab Costume |
| | | 48. Other Costume |

RULES:

10. Eng. or West. 13. single pic depicting a phase of the WR course
 16. 1 cut, 1 rein pic or 1 rein, 1 rein. cowhorse pic
 18. state pattern and maneuver
 30. stand, walk, trot models ONLY
 35. jump, dressage, cross country or nat Eng. trail
 37. state level and movement
 44. rodeo grand entry, any other type parade without the formal parade tack and attire.

31. standing models only, hunt obs. req.
 32. walk, trot models ONLY
 33. lope other act. models
 34. lope, action models ONLY



10/11-14 Judy¹
 Draeger, N8501
 Cty Y, Watertown,
 WI 53094
 11/8 Mindy
 Brown, 707 Rebecca
 Sioux City, IA
 51103
 11/29 Laura Rock-
 maker, 259 W. 20th st.
 Deer Park, NY 11729-
 5812
 12/8 Mary Vander-
 grift, Rt. 2 Box
 185 A, Mason, TN
 38049

THE FAR SIDE By Gary Larson

BENT OFFERINGS By Don Addis



2-15
 don
 addis



"What are you gonna tell your dad, Chuck?"

CHEAP THRILLS

Gale Good 1359 Sherrill Street, Anaheim, CA 92804 (714) 828-5843

Friend and East Coast Editor, Kay Fowler, stopped by southern California for a visit in August. A bunch of us travelled down to San Diego for a model horse show (and that's another story), then went to a swapmeet the next day. Lani Keller lucked upon an old smoke Belgian and a stencil-faced honey bay Shire when she had to make a pit stop; Sheryl Leisure picked up a woodgrain FAS; I found a lovely Goebel dapple grey grazing mare on a base with a red bay foal at her side for a very reasonable price; and Heather Wells purchased a beautiful color catalog (complete with pedigrees) from an Arab sale/auction. I was hoping Kay could find something to take home that she needed and she did! A black Breyer Poodle in excellent condition. It's always nice when everybody finds something they want.

Heather Wells has had the most extraordinary luck finding goodies lately. There was a white gloss Beswick with detailing which are uncommon on our shores; a old grey bucking bronco and woodgrain shetland pony she spotted, still in a paper bag, because the lady hadn't had a chance to put them out; and three decorators (two with missing eartips) with the hopeful promise of a fourth. Not bad for one month. If it sounds like we're just tripping over models here in California, we're not. A lot of time and energy is expended to find these cheap (and not so cheap) thrills.

Sue and David Lehman went to a street fair recently at the early hour of 5 a.m. (flashlight time) and David spotted a horse clock silhouetted atop a dealer's display. As most horse clocks turn out to be bronze, Sue didn't get too excited while walking over to it. However, under the steady beam of the flashlight, it turned out to be the glossy palomino Western Horse with the clock on the side. The clock doesn't work but a thorough cleaning revealed that everything else was in excellent condition. Then, 15 minutes later (still dark), David spotted a Poodle on another shelving display and turned the light on it to see what color it was. Woodgrain! David was very excited. (Gale: Yes, I remember it was David who discovered your woodgrain Shetland Pony, too. Hmmm. Maybe we should have little decals for Decorators and Woodgrains that you could put on your bumper or something to indicate how many of each a person has found. That would make two "finds" for David Lehman.)

Some of the people I've talked to on the phone lately have had some nice finds. Darryl Ward of Atlanta said he'd just gotten an HR Abdullah in palomino complete with sticker for the can't-beat-'em price of \$2.50. He's also found the DW HR Tom Masterson rearing palomino horse and a lovely white Breyer 5-Gaiter.

Shirley Ketchuck of New York said her husband has been especially supportive of her hobby since they attended Breyerfest. On a recent business trip to northern California he checked out a few antique stores and bought some models. At one place, the proprietor mentioned she'd just sold about 30 models to a girl not too long ago but that she'd kept back some of the best ones. The woman knew the value of what she had so the model wasn't exactly a cheap thrill but I don't think Shirley complained much when her husband returned with a Copenhagen Rearing Stallion.

Well, the Model Horse Faire (or Breyerwest as I called it) is over. It was a mini version of Breyerfest that grew out of the 4th annual signing party at Black Horse Ranch on September 29th. Talk about a zoo!! It was wonderful to meet and talk to so many people. Famous horse artist, Sam Savitt, was there signing his prints and postcards as well as giving drawing demonstrations; 'Bitsy Breyer' attended and signed models along with Pete Stone; there was also a beautiful video tape on one of Khemosabi's daughters being shown; and clinics on collecting, remaking, repainting and hairing, and tack making. New as well as discontinued Breyers were available plus a few Hagen-Renakers, Beswicks and other oddities. The rain held off until it was over and much fun was had by all. I'm glad there was a day of rest afterwards before returning to my mundane job (that pays the bills and buys the models).

Speaking of models at the Model Horse Faire, I traded for a Beswick "The Winner", a mold that I believe is discontinued, and bought a classic-size trotting white horse by Charlene Marshall. This last piece is an original ceramic piece by the artist and quite a find. Also picked up a comical looking rearing horse by McFarlan Potteries. This was made before they became Freeman McFarlan Potteries. I'd seen kittens by the older factory but hadn't known they made horses, too.

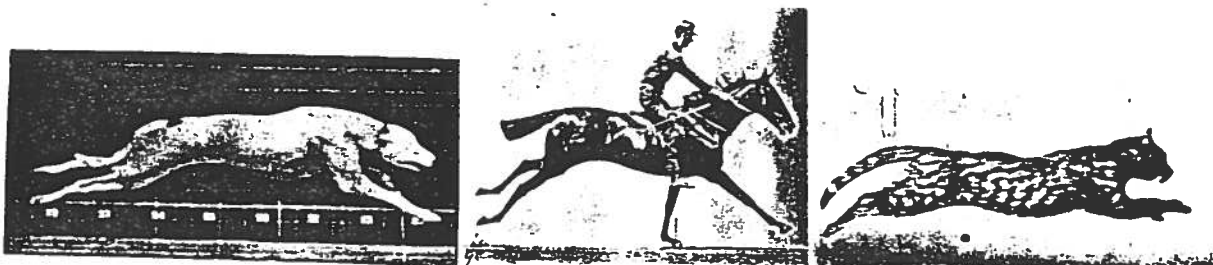
COLLECTOR'S NEWS

Got the exciting news that my special Beswick #818 black Shires were ready for shipment as soon as I sent the money. So I dashed to the nearest Deaks International to send a money order in pounds sterling. Hopefully, they will arrive before the next issue and I might have a photo to share with the TMR readers. I also requested a copy of their latest equine catalog in hopes of learning exactly which molds/colors were discontinued when they changed over to the Royal Doulton backstamp. Any information received will be passed on to you.

A new line, Creart, from Mexico, is now producing horses. Previously they did wildlife for nature and zoo stores. The Lipizyan is quite nice as is the Appaloosa and Quarter Horse. Wasn't real impressed with the trotting Arab or standing Mustang. These are traditional size, made of a procelain resin type of material and sell for about \$220 (plus tax, of course). *joale*

MUYBRIDGE AND THE GAITS OF HORSES - Part I

A review of *Animals in Motion*, by Eadweard Muybridge,
edited by Lewis S. Brown (New York: Dover Publications, Inc., 1957)



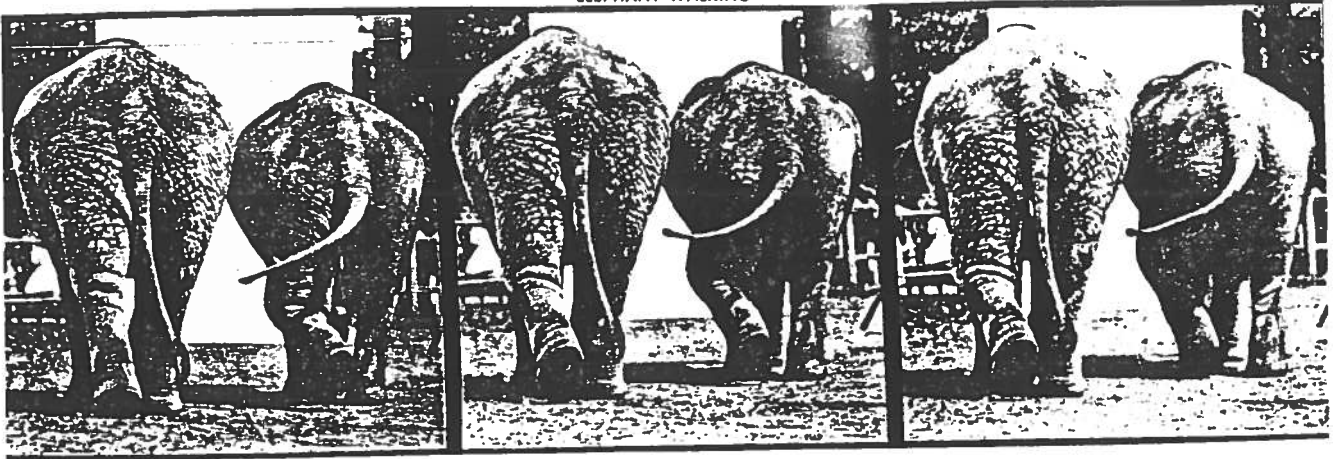
In 1872, an English photographer named Eadweard Muybridge (ED-ward MY-bridge, 1830-1904) was working in California when he caught wind of a controversy about equine gaits. The question at issue was: When a horse trots, does it at any point have all four feet off the ground? Such puzzles about the gaits of horses had been debated at least since the time of the ancient Egyptians, and artists through the centuries had depicted horse movements in ways that varied from the accurate to the bizarre (an artistic penchant not unknown to Breyer collectors). Dubious notions still flourished in Muybridge's day--this was the era when artists painted galloping horses "with limbs extended fore-and-aft, and gliding through the air."¹ Regarding the trot, "it was the common opinion of those who were supposed to have studied the motion of a horse, that while trotting he always had at least one foot in contact with the ground" (p. 42).

Muybridge determined to settle the question about the trot photographically. This was a brash idea. At a time when photographic technology was primitive, he was proposing to take still photos of a horse in rapid motion. The most advanced technique available in the 1870s was the wet-plate process, in which large, cumbersome cameras were loaded not with film as we know it (which hadn't been invented) but with glass plates freshly coated with wet chemicals. It wasn't possible to get much detail in photos of subjects that didn't sit politely still. Nevertheless, using wet plates and special equipment he devised for the project, Muybridge took several pictures of a racehorse called Occident trotting at high speed on the racetrack in Sacramento. Some of the pictures were clear enough to show Occident with all four feet indisputably in the air at once.

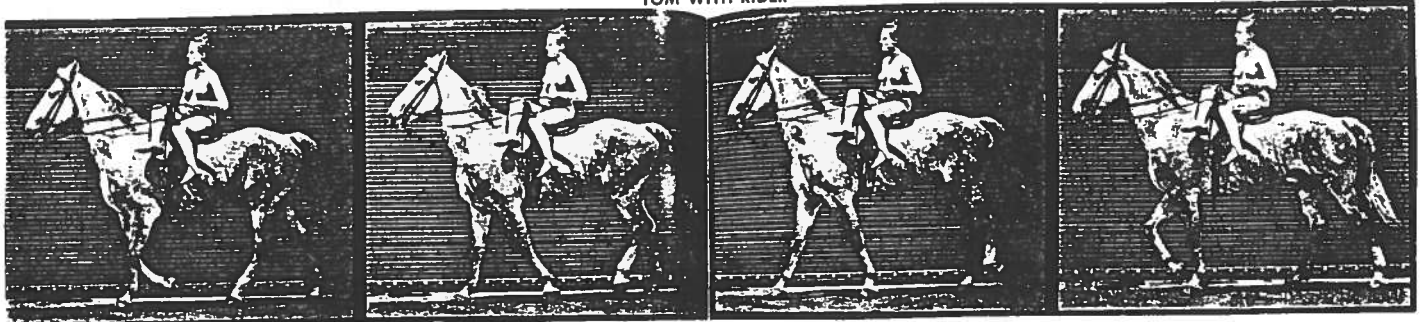
This initial project led Muybridge to the even wilder idea of making a photographic study that "would definitely set at rest the many existing theories and conflicting opinions upon animal movements generally" (p. 14). In particular, he wanted to make sequences of photos showing the consecutive phases of the different gaits of animals, especially horses. Such serial images are of course familiar to us now. Just hold up to the light a strip of home-movie film of Molasses snuffling around the corral or of Fire Demon unloading a passenger amid the cavalletti, as the case may be, and you'll see the sort of instant-by-instant views of animal movement that Muybridge hoped to get. But movie photography didn't exist then (it wasn't introduced until the late 1880s), and Muybridge was stuck with wet plates. What's worse, to make his sequences of photos not only would he have to photograph moving horses, as in the Occident project, but he would have to take batches of such photos in very rapid succession, to show each phase of the horse's stride.

To do this he set up long rows of cameras (up to 24 in a row) that could, thanks to his ingenious innovations, shoot in sequence at intervals of a tiny fraction of a second as a horse went by. The cameras were triggered by threads stretched across the horse's path. Though his technical problems were horrendous, Muybridge was blessed in his base of operations--the stockfarm of the grotesquely wealthy railroad magnate Leland Stanford, in Palo Alto, California. (The farm later became the site of Stanford University.) Muybridge worked on the project intermittently during the mid-1870s, taking time out in 1874 to kill his wife's lover. Fortunately for horse fans, "the case was dismissed as

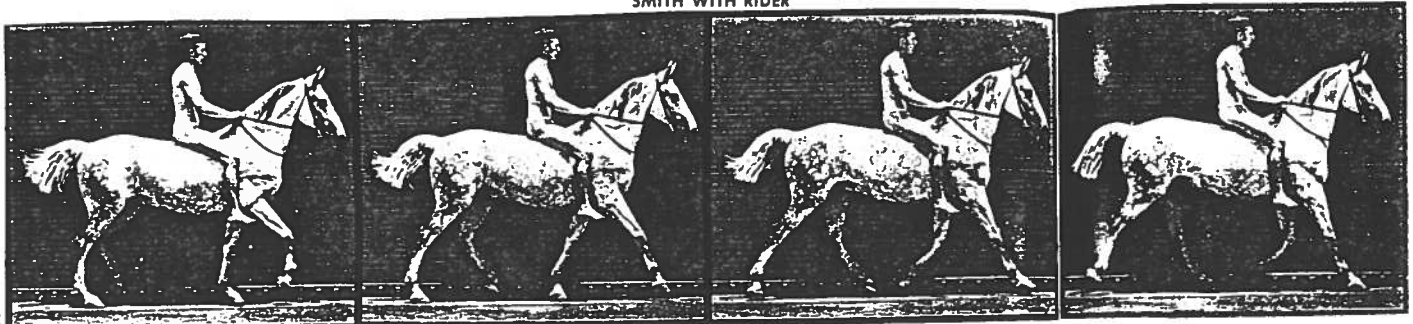
ELEPHANT WALKING



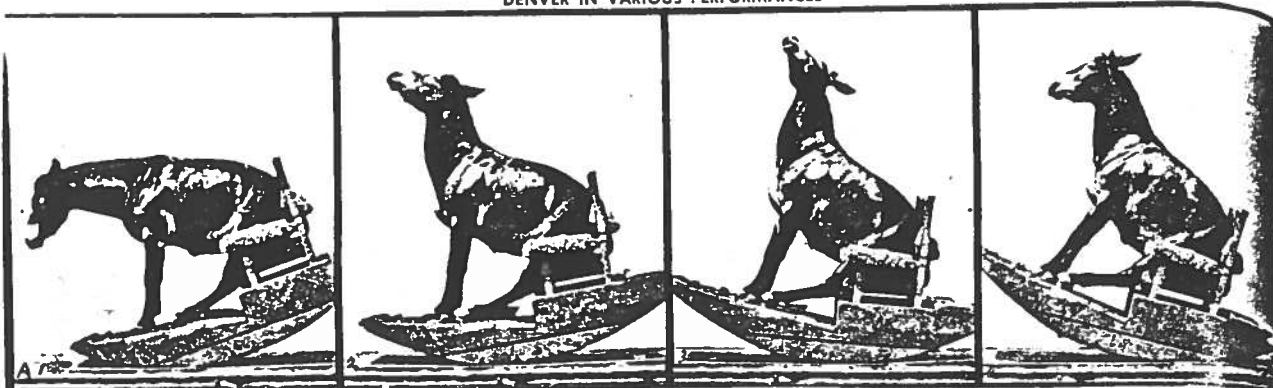
TOM WITH RIDER



SMITH WITH RIDER



DENVER IN VARIOUS PERFORMANCES



justifiable homicide"² (be glad you were born in the 20th century, people), and in 1878 Muybridge was able to publish a collection of his hard-won photo sequences, under the title "The Horse in Motion." These photos, and a larger collection published a year or two later, which included sequences of horses,

people, and other animals, were a big hit among scientists and artists internationally.

Pleased by his success, yet aware of the shortcomings of the Palo Alto project ("the work was incomplete, in consequence of the difficulty, and sometimes impossibility, of obtaining, with wet collodion plates, the essential details of rapid muscular action," p. 16), Muybridge decided to undertake a vast study of animal movement that would take advantage of the newly invented dry-plate technology, which was photographically faster, not to mention more convenient, than the wet-plate process.

From 1884 to 1885, under the auspices of the University of Pennsylvania, Muybridge took thousands upon thousands of pictures for the new project. Though the glass plates were dry and the cameras were triggered by a more sophisticated mechanism than threads, the setup was basically the same as in the Palo Alto study: rows of cameras shot in rapid sequence as a beastie hustled by. Down the photographic gauntlet Muybridge sent not only horses in every gait, horses free, horses ridden (some by naked persons), horses dragging weights, horses doing tricks, and horses pulling sulkies, but also cats leaping, gnus galloping, men jogging, tigers turning, cockatoos flying, mules bucking, children crawling, kangaroos bounding, elephants ambling, capybaras strolling--in short, whatever bipedal or quadrupedal life form he could lay his hands on doing whatever he could prod it into doing.

In 1887, Muybridge published the result of his labors: Animal Locomotion, an 11-volume work of 781 photographic sheets, or "plates," each with 10 to 48 pictures in sequence. The majority of plates were of people; 219 were of animals. This work "remains a basic source for artists and scientists alike."³

Almost all of the animal plates (and a few of the people) are reproduced in the 1957 Dover Publications edition titled Animals in Motion. Also included are a Preface, Introduction, and essay titled "Analysis of Animal Locomotion," all written by Muybridge for a work he published in 1899. Animals in Motion is essential for any model collector wary of joints and limbs that look as if they were free-associated in silly putty. This book provides quantities of surprisingly clear photos (considering they're over 100 years old) of live horses in every phase of movement. Animals in Motion is available for \$22.95 plus \$2.50 shipping (order number 20203-8). Write to Dover Publications, Inc., 31 East 2nd Street, Mineola, NY 11501.

Coming in Part II of this review: the gaits of kangaroos, deer, horses, and models.

--Nancy Atkinson

1. Muybridge, Animals in Motion, p. 57. (All my quotations of Muybridge will be from his writings in this book; he wrote these pieces in the late 1890s.) Muybridge labels this artistic style "Modern," and comments: "There is no phase in the motion of a horse photographed from life that can be referred to as an example of this curious treatment of the gallop.... A suggestion of it may be found...in the leap of a cat" (p. 53). He is impatient with the idea that artists may be less interested in being scientifically precise than in giving "an impression of rapid motion" (p. 57). What may begin as a merely symbolic representation, he insists, comes eventually to be presumed true (in short, artistic license corrupts the mind). Despite his emphasis here on inaccurate depictions of the gallop, according to his Preface (p. 13) it was not this issue but the question about the trot that first inspired his photographic study of horse gaits.

2. New Columbia Encyclopedia, under "Muybridge, Eadweard."

3. New Columbia Encyclopedia, under "Photography, still."

References: (1) Eadweard Muybridge, Animals in Motion, ed. Lewis S. Brown, New York: Dover Publications, Inc., 1957. (2) The New Columbia Encyclopedia, New York: Columbia University Press, 1975.

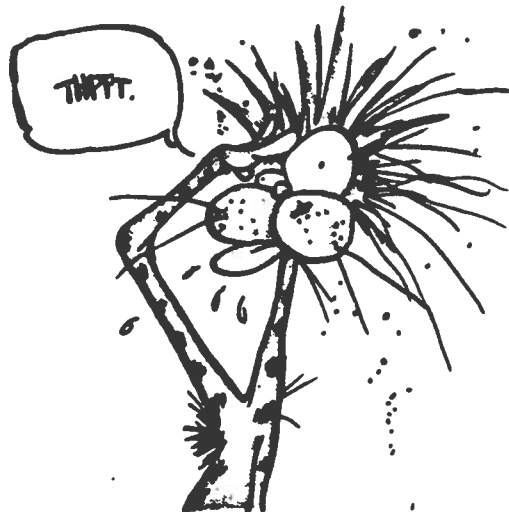
DRIVEL DRIVEL DRIVEL DRIVEL DRIVEL DRIVEL DRIVEL DRIVEL DRIVEL

(With added editorial comments by Kay - Hee!)

Time once again for me to reach into the "drivel file" and pull out... YECH!!... (Don't worry, it didn't STICK...) yet another weird item sent to me by YOU, yes YOU... all of you "interesting" characters out there. You all know me SO well. You know what I like (And you're NOT sending it... ha ha!). Nah. Keep it coming.

Let's see what the first handful out of the file contains...

- A. A picture of Our Hero, "Bill the Cat." (My husband, coincidentally, is named Bill also. Fate?) *(Kay here - But the bigger question is whether or not your husband Bill is coincidentally a cat, too. I mean, there was that incident of the cat's toothbrush and all...)* Here is the picture - I LOVE it. It expresses how I feel just about all of the time these days... "THPFT!"
- B. Here is a selection from that gross slug book that Lisa Rivera sent that has a "Halloween" theme:
- C. A letter from Debbie Gamble-Arsenault about her new hobby, TOAD LICKING. *(I'm intrigued...)* Well, I'm

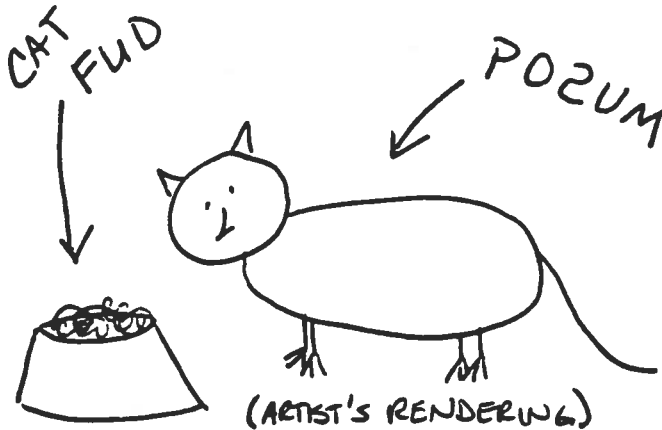


Hang them from a Christmas tree
Mix them with your Easter sweets
Carve one like a pumpkin
Hand them out for trick-or-treats

lying. About her licking toads, I mean. (How disappointing) She says in her letter: "I was sitting at the hairdressers...innocently reading my magazine...when BOOM! (Her hair blew up! No, no, no, just kidding) BOOM...this juicy item leapt off the page and assaulted me right amongst (her word, Kay!) amongst the eyes (how many does she have?) from the pages of Real Woman magazine" (A title that I find amusing in itself...) The toads apparently have a hallucinogenic skin discharge. (I HATE when that happens...) Someone else sent stuff on this also. Let's see if it turns up in the next handful of crud out of the file...Not this time, but...(I am assuming that this means we're S.O.L. for this issue...)

D. Sue Rowe (fellow weirdo customizer in crime of mine) sent an ad in an envelope marked "FREEZE DRIED DRIVEL." At least she warned me. Anyway this ad features freeze dried rattlesnake head key chains. OH! ORDER ME A DOZEN OF THEM THAR THAYNGS! Here's what Sue had to say to me: "Dear Slime Woman of the Far West...Thought of you, of course, (of course????) when coming (crawling? slithering?) across the enclosed ad...seemed right up your alley - - or down your sewer..." She goes on to assure me (us) that "Freeze dried head key chains should find a home in every Christmas stocking...HO HO HO..." (Ho Ho INDEED...)(Somehow I just can't picture Santa-Mom putting these on her shopping list...)

E. We have several VERY obscure photos of what Gail Berg says is a possum. Kay, what do you think?? (Oh, gosh, it's pretty close, but I think that it's either a possum or a 747 on her porch. Let's look at another view...oh, yes...it's definitely a 747. I ALSO think that if we attempt to print these photos in this mag, Heather will send out her good friends, Guido and Lars, to discuss with us the finer points of photocopy etiquette. So, I will give you my artist's rendering.) This animal chows down on cat food on Gail's back porch, much to her kitty's chagrin. (I'll bet!)



about??) SLUGS!!! (Now why didn't I think of that?) I quote: "The advantage of the slug [as an experimental subject] is that it is complicated enough to be interesting, but not so complicated as to be intractable." Well said. In addition, a woman who owns a pet slug gazes deeply into its eyes (which are moving about at the tips of two protruding stalks) (Sounds like someone I had lunch with last week...) and says, "How could anyone no love a face like that?" Kay? What do you think? (Let me count the ways...) Did you know that a slug can, when properly alarmed, secrete one-third of its body weight in mucus? Did you know that slugs can sling their slime? (Now there's a skill to put down on a resume! Many's the time that a good self-secreted-mucus-slinging would have come in handy in MY job.) Another part of the article reveals (You'll like this...) BEER TASTE TEST STUDIES...on which Brewski the slugs want most! The winner of the slug beer taste-off, was BUDWEISER. (Notice, however, that Anheuser-Busch has yet to



Rare Skins Inc.

LOOK OUT 1990's!! foreign skin dealers Watch and Learn. Our American "Velvet" chrome tanned rattlesnakes skin sales and by product sales have just increased over One Million Dollars once again! That's Right! Rare Skins is "Hot" and will get Hotter in the 1990's with their newly printed catalog full of New By Products never seen before!

Billfolds (thick or thin), Tri-folds, Card Cases, Hatbands (patchwork or full skin), Full Skin Belts, Gold & Silver Hardware on Ranger Belts, Buckles (leather laced & pure brass), Spur Straps (narrow & wide), Exotic necklaces, "Freeze Dried Head Key Chains", Hat Racks, Rattler Apple Alarm, Guitar Straps, Checkerteria Ladies Clutches, Rattler Earrings, Ink Pens, Bolo Ties and custom Pool Cue Sticks with the Mystical Cue Mate and many, many more New Rattlesnake and Armadillo Products!

Celebrating 21 years of being the largest Buyer, Manufacturer, Supplier of Rattlesnake and Armadillo by products means Quality is Tops!!!!

202 West Broadway
Henryetta, Okla. 74437
918-652-7788 * 918-652-7118
FAX 918-652-8876

F. Next, we have a photo sent by Liz Schoenbaum... (See next page). At the risk of inflaming people, I will keep all comments, in general, confidential!! Interesting, tho, yes? (I'd say that blows Chrysler's 7 year/70,000 mile warranty all to heck...no offense, Mr. Iacocca...) Notice that the sign says, "Quality used cars" TWICE...like you didn't or couldn't read it the first time. BUT WAIT - THERE'S MORE!

Nicki Hunter sent a LONG, yet fascinating article titled, "This Slimy Rascal Sports 3,000 Teeth and Four Little Noses." Guess what it was about? (Oh, gosh, let me think. It's The Model Rag, and we've already covered Toad Licking, Possums and Freeze Dried Reptiles...what else could we talk



use these statistics in any advertising or marketing strategy. After all, as the article says, "(a dog) is more effective as spokes-animal for Bud Lite than a suicidal, alcoholic, hermaphroditic slug could be." (I guess it all depends on you your target market is...) Well, there you go. And there's more...at the annual slugfest in Guerneville, CA (remember, we featured this in a prior drivel column?) Judges sample delicacies such as a martini with a slug instead of an olive that tastes, JUST AWFUL," according to Sonoma County Sheriff R. Michalson. (One wonders how many martinis with olives Sheriff Michalson had to have prior to sampling this delicacy. And while we're on the subject, I prefer mine shaken, not slugged...)

I wonder if there is any more slug stuff in the file...? Let's look, shall we? No...not slug data. COCKROACH DATA! (Well, it's got to be the next best thing...) Candace Evans sent this article on a guy that costumes cockroaches in little outfits. (What a hobby!) He has "Elvis Presley"...resplendent in blue suede shoes (6 of them? No, probably 4, 'cause he needs 2 front legs to hold the tiny GUITAR...sheesh!) Well, here's the article in its entirety. If Kay doesn't want to print it completely, she can condense/review here: (Kay!) (Sorry, there's no room at the inn...)

Ah! What's next is the GREAT "Spring Chicken" info that Corky and Ardith sent me. Here it is! (I invite your comments, Kay). (Gee, like I really have an option now, huh? Anyway...I especially like the part that suggests that it can be used as a corporate mascot. I can see it now, "The Sullivan Payne Co. Night-of-the-Living-Dead Roasted Plastic Chickens!" Really inspires that sense of confidence, doesn't it?)

Corky also sent an article titled, "Dwarf Tossing Gets Heave-Ho in New York." Bummer for all you inveterate Dwarf Tossers out there. You know who you are. (Even better, WE know who you are, and we have the pictures to prove it! Hee...) Anyway, there's an offshoot of this, which is Dwarf Bowling, "...in which a helmeted dwarf is strapped to a skate board and rolled into bowling pins." (I'm so jealous!) Just the way I want to spend my Saturday night.

NEW **SPRING CHICKEN**
Fully Roasted and Still Alive!



Looks Real — Full Size and Noise Activated. Old enough to cause a Laugh-Riot and Chicken Shock. Instantly jumps into squirming contortions & wildly waving a leg when it hears talking, laughing or a telephone. A high energy ice-breaker for "In-Law" parties, meetings, seminars, displays, etc. Concealed internal microphone & controls. No wires. Self-contained. Expertly taxidermy airbrushed for exact realism. Computer chip brain and timer. Automatically reactivates. Durable precision motor for years of fun. Outrageous for banquet or buffet table, refrigerator, desk drawer, microwave, trade show, corporate mascot, etc. Adopt Spring Chicken into your family Today!!

Introductory Offer
\$29.99

(Plus \$3.75 shipping & handling)

FREE Duracell Batteries
IMMEDIATE DELIVERY CALL (312) 588-1021

Platter is not included

Full Satisfaction-Full Warranty
MONEY BACK GUARANTEE

Send Check or Money Order to: S.A.M. Electronics
2701 Belmont
Chicago, IL 60618



Hey! Here's something for a certain COW PERSON we all know and love... Udder-ly adorable, yes, Cheryl? I like the strategic udder placement. *(Puts a real crimp in the slow-dancing, tho...)* Hmm. Fun, too, when you have to go to the potty... (pardon my udder falling on the floor...I HATE when that happens...)

Karen Gerhardt sent an additional question for the "Real Collector Quiz":

When you just gotta buy an expensive model, do you:

- a. Tell your partner that you are writing a \$500 check for ONE horse...
- b. Put out a huge saleslist and assure your partner that these items will sell and pay for the \$500 horse...
- c. Write 20 checks to friends for \$25, have them cash the checks and give it back to you to send for the horse...

- OR -

- d. Take out cash from the automatic teller every week, go without lunch, etc., then write a money order for the horse?

(Actually, I make it a point to never allow the spousal unit to SEE the checkbook, much less look at the bank statement...) Well, to put a big cherry on this "cake," Karen says she scored a NEGATIVE 5 on the original test. Did you join Model Horses Anonymous, Karen? *(She can't; she's not anonymous anymore!)*

Finally...(quit cheering/breathing sighs of relief...) *(Sorry...I couldn't help myself...)* here is a picture that I hope duplicates *(Heather hates dark pictures...)* *(I can't imagine why you think this won't reproduce well...it's a black Labrador wearing black swim fins and white ping-pong ball eyes sitting in front of a frog on a plastic lily pad, all on a black background. She'll slay us!! So...it's time to call on the Sullivan Payne Co. Special Photograph Retouching SWAT Team - that is to say, Kay with a bottle of White-Out...)*



COW COSTUME is "udder"ly a "moo"ing! You're certain to create a stampede when you make your entrance in this get-up, and that's no "bull"! Costume comes complete with Holstein-patterned body suit (vinyl udders and long tail are attached to suit) and hood with horns and ears. Sizes available are small: 34-38 (ladies size 8), medium: 38-40 (ladies size 10-12) and large: 42-44 (ladies size 14). Made in USA.
E2008 Cow Costume (S) \$39.98
E2009 Cow Costume (M) \$39.98
E2010 Cow Costume (L) \$39.98



*(Uh-oh, she's wrapping this column up. I just wanted to recall for all of your collective amusement a few tidbits from my pilgrimage to So. Cal. in August. First, it was nice to see that all of my old cronies were just as insane as ever...I had begun to worry that it was just me! Gale, Heather, Lani and Sheryl came by my parents house on Saturday morning to go to Joan B's live show down in San Diego. We had kept my arrival a secret from Sheryl; Heather told her they had to stop by my parent's house and pick up a box to take to the show, so to say that she was a bit surprised to see me would be a tad understated. It was a relatively uneventful ride down, although we did have that rather strange detour off the freeway in search of a *ahem* facility for Gale, with all of us trying to make her laugh (picture all this to the tune of "Flight of the Bumblebee") and then on to the show, where Laurie's first comment to me is, "Do you get a boob job?" Ah, leave it to Ms. Subtle. Anyway, had a great time judging at the show, and then the "Hangers-On Supper Club" went out to dinner, and chased away the majority of the other diners in the restaurant. And there was that police officer who kept circling us in the parking lot - I'm sure he thought we were all blotto. Anyway, had a wonderful time, at the swap meet the following morning, too! I'm looking forward to my next trip already! Oh, I am going to be in Sacramento the week of November 5th. Anyone going to be in the neighborhood? Oh well, best run...)*

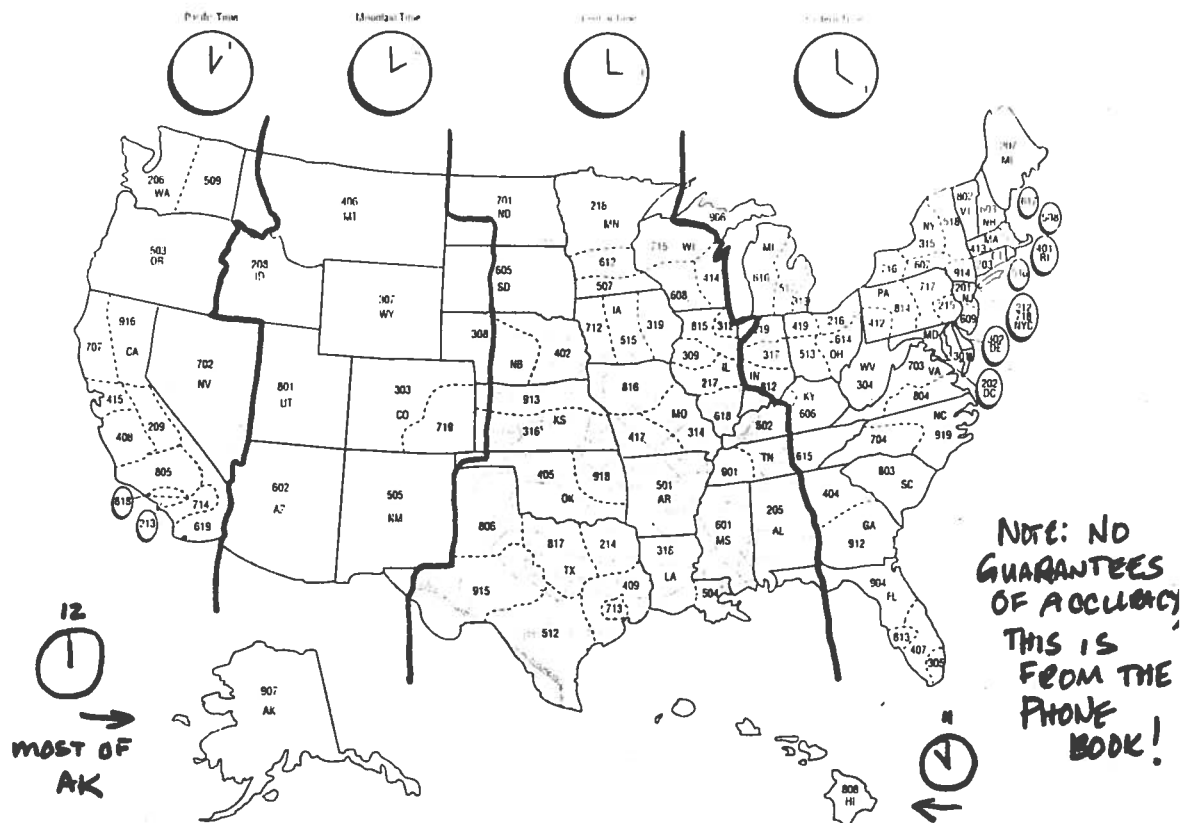
On that bizarre note...I'll be back!! Love, Laurie.

Those of you who have been in this hobby for more than ten years will of course remember Linda Walter's Model Horse Shows Journal (MHSJ). On the index page of each issue, Linda would fill any extra space with definitions of the abbreviations used in the magazine, so that newcomers to the hobby/publication would be able to decipher the cryptic ads, articles, and classlists. It is easy for us "old-timers" to lapse into "modelese," both in ads and conversations, forgetting that many people in this growing hobby are not familiar with the abbreviated jargon that we take for granted. So, to remedy the language barrier, we here at TMR will periodically publish a listing of common initials and terms. If anyone can think of any that we've overlooked, send them to Heather.

The most important initials for you to remember are TMR (The Model Rag). Ha! Just kidding! (sort of...) Actually, the most important abbreviation, and one which seems to be causing a bit of a problem lately, is SASE. This stands for Self-Addressed-Stamped-Envelope. This means an envelope, preferably business-sized (i.e. 9½ x 4), with your name and address printed as the recipient, and a 1st class stamp (currently 25¢) affixed to the upper right corner. If a LSASE is specified, it means at least a business sized envelope, if not bigger. If an SASE is requested and you do not enclose one, do not be surprised if you do not receive anything back.

One other important point to address: **TIME ZONES**. You will note on the information page of this magazine, I specify that I will accept calls from 9 a.m. to 9 p.m. E.S.T. only. E.S.T. stands for "Eastern Standard Time." To illustrate:

Area Codes and Time Zones



So, if you live in Seattle, Washington and decide to call me at 9 p.m. P.S.T., I will attempt to come through the phone line and strangle you, because it is really midnight on the East Coast, and at least two hours past my bedtime. Conversely, if I call someone in California (let's use Laurie Jo-Mama as an example) when I get in my office at 7:30 a.m., it's only 4:30 a.m. out there, and Bill the Husband will NOT be a happy camper. For the sake of courtesy, please stop and think before you dial!

Now, on to the list; we'll start with common model abbreviations:

FAS/FAM/FAF - Family Arabian Stal/Mare/Foal
 PAS/PAM/PAF - Proud Arabian Stall/Mare/Foal
 CAS/CAM/CAF - Classic Arabian Stal/Mare/Foal
 CQHS/CQHM/CQHF - Classic Quarter Horse
 Stallion/Mare/Foal
 CAndS/CAndM/CAndF - Classic Andalusian
 Stallion/Mare/Foal
 CMS/CMM/CMF - Classic Mustang Stallion/
 Mare/Foal

SHS/SHM/SHF - Stock Horse Stallion/Mare/Foal
 RunS/RunM/RunF - Running Stallion/Mare/Foal
 Graz M/Graz F - Grazing Mare/Foal
 Act. SHF - Action Stock Horse Foal
 CWP - Canterng Welsh Pony
 MOW - Man O'War
 USET - United States Equestrian Team
 FS - Fighting Stallion (may also be Family Arab
 Stallion)

MANUFACTURERS/PRODUCT-LINES

Br/Breyer - Breyer
 Trad - Breyer Traditional size
 Clas - Breyer Classic size
 LB - Breyer Little Bit size
 SM - Breyer Stablemate size
 Hart - Hartland

H/R - Hartland Horse & Rider series (not to be
 confused with H-R)
 TM - Hartland Tiny Mite size
 Bes - Beswick
 H-R - Hagen-Renaker
 DW - Hagen-Renaker Designer's Workshop size
 Eustis - Limited Edition pieces by Francis Eustis

FINISH

rem - remade
 rep - repainted (may also be REPAIRED - be
 careful!)
 hrd - haired
 R/R/H - remade/repainted/haired
 cus - customized
 m/t - mane/tail
 OF - original finish
 SR - special run
 cur - current
 disc - discontinued
 gl/G - glossy
 M - matte

semi-gloss - finish somewhat in between matte and
 gloss; most notably used in reference to the
 mahogany bay PA family.
 chalky - during 1970's, Breyer changed the plastic
 they used, resulting in grey, purple, etc.
 plastic. Models needing white markings
 were painted with white paint, resulting in
 the "chalky" effect on legs, faces, etc.
 exc - excellent
 sl. yel - slightly yellowed
 LSQ - live show quality
 eyewhites - factory painted eyewhites dating from
 1950's - 1960's

COLOR

lt. - light
 dk. - dark
 ch/chest - chestnut
 alab - alabaster
 pal/palo - palomino
 char - charcoal
 wh - white
 bl/blk - black
 gr. - grey
 d.g. - dapple grey
 buck - buckskin
 flea - fleabitten
 WG - woodgrain

decorator - 5 models (Mustang, Fighting Stallion,
 Running Mare & Foal, 5-Gaiter) made in
 1967 (I think that's right), came in 4 glossy
 colors: florentine - dapple gold, white m/t;
 gold charm - solid gold, white m/t; wedge-
 wood - solid powder blue, white m/t; copen-
 hagen - dapple powder blue, white m/t
 pi - pinto
 tob - tobiano (pinto). Key in identifying: white
 markings cross line of back between withers
 and tail. Often seen as mostly white with
 large dark spots, evenly patterned and
 edged.
 ov - overo (pinto). Key: No white crossing line of
 back between withers and tail. Often seen
 as dark body color with splashy, random
 white markings.

BREEDS

TWH - Tennessee Walking Horse
NSH - National Show Horse
App - Appaloosa
Clydes - Clydesdale
Shet - Shetland Pony
TB - Thoroughbred
QH - Quarter Horse
ASB - American Saddlebred
SB - Standardbred

And - Andalusian
Lip - Lippizan
Pa - Paint (Note a Paint horse is a breed; a PINTO is a color)
Trak - Trakehner
Han - Hanoverian
MFT - Missouri Fox Trotter
Holst - Holsteiner
Warm - Warmblood
Bel - Belgian

SEX/AGE

stal/s - stallion
m - mare
geld/g - gelding
f - filly

c - colt
yrlg - yearling
wnlg - weanling

PERFORMANCE

hal - halter
perf - performance
WP - Western pleasure
EP - English pleasure
HS - huntseat
SS - saddleseat
cut - cutting

rop - roping
bar - barrels
pol - poles
gym - gymkhana
H/J - hunt/jump
ET - English trail
WT - western trail

MISC

pix/pic - pictures/photographs
S/D - sire/dam
ppd - postage paid

JAH - Just About Horses
THHN - The Hobby Horse News
MHG - Model Horse Gazette

PLUS, we have our own definitions of some of the abbreviations:

MHF - Model Horse Fanatic
TAH - Try Another Hobby
NDG - No D*mn Good
R/R/H - Really, Really Hideous
FAM - Fainty Arab Mesomorph

PAM - Passably Arab Mare
Sham - Enough said...
Rugged Lark - Jughead Bark
Khemosabi - Khemotherapy
SHS - Somewhat Horse Shaped

Let us know what other ones YOU can come up with!

NANCY ATKINSON'S LIST O'GOODIES

BREYER SPECIAL RUN TRADITIONALS AND CLASSICS
Includes Commemorative and Limited Editions

Compiled by Nancy Atkinson from Laura Diederich's book, Section 2, "Special Runs and Test Colors," and Section 6, "Breyer Dogs, Cats, Cattle, and Wildlife"; Jill Rademacher's "Breyer Test Runs and One-of-a-Kinds" list (1989, includes special runs); Breyer Collector's Video (1989, by Black Horse Ranch); Just About Horses; The Model Rag; Heather Wells's personal notes; and various mail-order companies' specials notices.

Codes

AX - Aldens Christmas special run
 B - sold through Bentley Sales Co.
 BF - sold at Breyerfest
 BHR - sold through Black Horse Ranch
 CE - commemorative edition
 CS - sold through The Country Store, Wisconsin
 DW - sold through Disney World
 E - sold through Enchanted Doll House
 EG - sold in England and Germany
 G - sold in Germany
 HA - sold through Hog Assn. of America
 HC - sold through Hobby Center Toys, Ohio
 HE - sold through Horse Emporium
 HI - sold through Horses International
 JAH - sold through Just About Horses
 LE - limited edition
 LS - offered at Breyer-sponsored live shows
 MCS - sold through Model Horse Collectors Supply Co.
 MD - sold through McCormick Distilling Co., Weston, Mo.
 MH - sold through Model Horse Congress
 MO - sold through various mail order companies
 ND - sold through a Nebraska distributor
 PX - Penney's Christmas special run
 R - sold through Riegseckers Co., maker of miniature wagons
 RA - sold through Iowa Red Angus Assn.
 SA - sold through Simmental Cattle Assn.
 SC - sold through Sam & Co., Inc., Jackson, Ohio
 SP - sold at signing parties w. Peter Stone
 SW - sold through Small World
 SX - Sear's Christmas special run
 V - sold through VaLes, in Phoenix, Arizona
 WX - Montgomery Wards Christmas special run
 X - Christmas special runs, company unknown
 Y - sold through Your Horse Source

Model	Year/Code	Color	Quantity
Abdullah - see Trakehner			
Action Stock Foal	82 PX	brown pinto	
Action Stock Foal	83 SX	gray appy: this was the foal in the Sears xmas gray appy set per Laura Diederich; per JAH it was the standing Stock Foal)	
Action Stock Foal	84 PX	bay	
Action Stock Foal	84 SX	buckskin, lighter than the later regular run	
Action Stock Foal	84 PX	black pinto	
Action Stock Foal	86 PX	peppercorn brn appy	
Adios	80 JAH	unpainted	

Model	Year/Code	Color	Quantity
Adios	84 (78?)	V buckskin	200
Adios	85 MH	alabaster, pink feet or gray feet	4
Adios	85 MH	black	7
Adios	87 BHR, B	dapple grey, grey m/t, wht legs	1000-1500
Adios	87 BHR, B	palomino, bald face	1000-1500
Adios	87 PX	red dun appy, bars, bald face, 4 socks	200
Belgian	79 MH	dap grey, dk m/t, red/yellow ribbons	
Belgian	82 DW	black, solid; blue/wht ribbons	
Belgian	82 WX	black, solid ("Percheron") red/yel ribbs	
Belgian	84 R	dapple grey, dk grey m/t, gold rib	1500
Belgian	84 R	palo, wht pts, red/wht or red/blk ribbons	150
Belgian	84 R	chestnut, wht. m/t and stks, red/yel. ribbons	
Belgian	84 (85?)	HI red roan	600
Belgian	85	chestnut, white m/t	200
Belgian	86	black, red/white ribbons?	1500
Belgian	86	chestnut	1500
Belgian	87 HI, B	bay, bald face, white stockings	
Belgian	87 HI, B	"smoke" (gruella appy like Buckshot)	1500
Black Beauty #89	80 JAH	unpainted	
Black Beauty #89	84 SX	bay, no white	
Black Stallion	88 PX	light bay	
Breezing Dixie - see Lady Phase			
Bucking Bronco	88 B	appy, leopard, black spots, grey shading	500
Bucking Bronco	88 B	chestnut, 4 socks	500
Bucking Bronco	88 B	red roan	500
Bucking Bronco	88 B	smoke grey, black points	500
Buckshot	85 MH	black	3
Buckshot	85 MH	buckskin	
Cantering Welsh Pony		light dun, greyish zebra stripes on upper legs, white face, stockings (info from Betsy Andrews)	10
Cantering Welsh Pony	72 MH	lt dap grey, grey m/t, wht barrel	5
Cantering Welsh Pony	80 JAH	unpainted	
Cantering Welsh Pony	85 JAH	dap grey, blk points, dorsal, red ribbs	1500-2000
Cantering Welsh Pony	86 SW	dapple grey, gold ribbs (Breyer or SW staff painted over red ones); these were overruns from the '85 JAH special	100
Cantering Welsh Pony	87 LS	red bay, yellow and red ribbons	10
Cantering Welsh Pony	88 SW	flea-bit grey, red ribbons	500
Cantering Welsh Pony	88 SW	liver chestnut, bald face, green ribs	500
Cantering Welsh Pony	88 SW	red dun, dorsal, metallic blue ribbons	500
Cantering Welsh Pony	88 SW	red roan, yellow ribbons	500
Cantering Welsh Pony	90 CS	rose gray (same color as PAS #804)	900-1000
CIPS - see El Pastor			
Clydesdale Foal	79 MH, MO	dapple grey, dark, wildly patterned	200-400
Clydesdale Foal	82 PX	true bay, extensive white on legs	
Clydesdale Foal	88 HI	black, star, 4 stockings	500-600?
Clydesdale Foal	88 HI	dapple grey	500-600?
Clydesdale Foal	88 HI	steel grey ("smoke"), 4 white stockings	500-600?
Clydesdale Mare	79 MH, MO	dapple grey, dark, wildly patterned	200-400
Clydesdale Mare	80 JAH	unpainted	
Clydesdale Mare	82 PX	true bay, extensive white on legs	
Clydesdale Mare	83 SX	bay, flocked and haired, w. halter	
Clydesdale Mare	87	dapple grey, soft color; pink nose/ears	1500
Clydesdale Stallion	79 MH	dapple grey matte	200
Clydesdale Stallion	82 PX	true bay, all red ribbons	
Clydesdale Stallion	87	dap grey, gold bobs, pnk nose/ears	1500
Dan Patch - see Pacer			
El Pastor	87 LE	"Precipitado Sin Par" (CIPS) bay pinto, tri	

Model	Year/Code	Color	Quantity
		eyes, pink feet, star and snip	
El Pastor	88 HE	bay, solid face, 1 front stkg, 1 hind	
Family Arab Foal	early 70s	brown pinto (sim. to Indian Pony)	100-200
Family Arab Foal	78 MH	solid black	
Family Arab Foal	81 PX	light chestnut	
Family Arab Foal	82 PX	dark chestnut	
Family Arab Foal	83	matte grey appy, blk m/t/spots	
Family Arab Foal	88 E	glossy white, grey m/t	
Family Arab Mare	early 70s	brown pinto (sim. to Indian Pony)	100-200
Family Arab Mare	78 MH	solid black	
Family Arab Mare	81 PX	light chestnut	
Family Arab Mare	82 PX	dark chestnut	
Family Arab Mare	83	matte grey appy, blk m/t/spots	
Family Arab Mare	88 E	glossy white, grey m/t	
Family Arab Stallion	early 70s	brown pinto (sim. to Indian Pony)	100-200
Family Arab Stallion	78 MH	solid black	
Family Arab Stallion	81 PX	dark chestnut	
Family Arab Stallion	82 PX	light chestnut	
Family Arab Stallion	83	matte grey appy, blk m/t/spots	
Family Arab Stallion	88 E	glossy white, grey m/t	
Fighting Stallion	85 MH	grulla	
Fighting Stallion	85 PX	flocked white, blk feet, Alec ringmaster	
Five-Gaited Saddlebred	80 JAH	unpainted	
Foundation Stallion	80 JAH	unpainted	
Foundation Stallion	83 WX	palomino, white points	300-700
Foundation Stallion	85 HI,B	alabaster, gray points, pink ears	
Foundation Stallion	87 PX	liver charcoal, 4 stkg, reddish wht m/t	
Grazing Mare	89-90 SX	red bay blanket appy	1000
Haflinger	85 (87?) HI	golden brown, grey m/t, some w. 4 socks, some w. no socks	900-1000
Haflinger	90 CS	chestnut pinto, half-blaze	
Halla	89 PX	fleabitten gray	
Hanoverian	80 JAH	unpainted	99-200
Hanoverian	85 (86?) HI	dapple grey (painted over bay)	375
Hanoverian	87 Y	alabaster	375
Hanoverian	87 Y	bay, 4 socks, bald face	375
Hanoverian	87 Y	black	375
Hanoverian	87 Y	chestnut	375
Hanoverian	89 PX	dark dapple gray, blk points	
Hanoverian	90 G	"vaulting horse," black, white stkg, blaze	
Indian Pony	80 JAH	unpainted	400
Indian Pony	87 (88?) BHR	bay, 2 rear socks	400
Indian Pony	87 (88?) BHR	dark dapple grey, very dk m/t	400
Indian Pony	87 (88?) BHR	grey appy, dk m/t, blk spots	400
Indian Pony	87 (88?) BHR	leopard appy, dk m/t, blk spots	400
Indian Pony	88 PX	red dun, dorsal, bald face, 2 stock.	
Jumping Horse	B	bay, no white, brown legs	
Jumping Horse	82 SX	seal brown, star or solid face	3?
Jumping Horse	85 MH	white	
Justin Morgan	88 PX	red chestnut, 1 hind sock, pink foot	200
Lady Phase	80 MH,	MO buckskin, solid	
Lady Phase	80 JAH	unpainted	
Lady Phase	83 PX	buckskin, bald face	
Lady Phase	88 LE	"Breezing Dixie" dark bay blanket appy, tri eyes, star, first models had ugly gray feet, later models had black feet	
Lady Phase	89 SP	red roan, tri-color eyes	
Lady Phase	90 PX	dapple gray, black points, dorsal stripe	

Model	Year/Code	Color	Quantity
Legionario III	85 HI, B	chestnut, 4 stockings	300-700
Legionario III	85 PX	flocked white, blk. feet, w. doll, surcingle	5
Man O' War	70	dapple grey	4
Man O' War	85 MH	black, grey feet, gold halter	
Man O' War	90 SX	red chestnut (reg. run color) w. high gloss	
Misty	84 SX	flocked pinto	4
Misty	85 MH	black	21
Misty	90 BF	gold Florentine	
Morganglanz	80 JAH	unpainted	200
Morganglanz	85	dapple grey	
Morganglanz	89 PX	red bay w. stockings	100-200
Mustang	78 MH	solid black	
Mustang	87 X	chestnut, flaxen m/t, grey nose	333
Mustang	88 BHR	alabaster, grey shading	333
Mustang	88 BHR	bay blanket appy	333
Mustang	88 BHR	black leopard appy, grey m/t, shading	333
Mustang	88 BHR	fleabitten grey, dk m/t	333
Mustang	88 BHR	palomino, white points	333
Mustang	88 BHR	red dun, white stockings	1000
Mustang	88 MCS	"Ruby," red ches. w. yellow roaning	
Old Timer	83 WX	white, yellow hat	
Old Timer	84 MD	dap. gray, black harness, yellow hat, w. wood "A&P" delivery wagon bourbon decanter, brass wheels, horse held to shafts w. metal pins, mounted on wood base	
Pacer	81 (82?) SX	bay, star, black socks, w. Brenda, sulky	
Pacer	81 WX	alabaster; same as reg. run started in '82 (info. from Jeanette Hollansky)	200+
Pacer	82 AX	black, brn. halter	
Pacer	82 (81?) PX	light chestnut, w. Brenda, sulky	
Pacer	83 & 84 SX	bay, solid face, 4 stks., w. Brenda, sulky	100
Pacer	84 R, B	dapple grey, 4 stockings	100
Pacer	84 R, B	chestnut, light m/t, 1 hind stocking	100
Pacer	84 R, B	palomino, white points	100
Pacer	90 LE	"Dan Patch" red bay, star, tan feet, brn. halter, 1 rear white coronary band	
Pegasus - see Lippizan	in Classics section		
Performance Horse	84 PX	grey appy, black points/spots, w. saddle	
Performance Horse	89 HI	alabaster	
Performance Horse	89 HI	leopard appy	
Performance Horse	89 HI	liver chestnut	
Performance Horse	89 HI	red roan	
Performance Horse	90 SX	black blanket appy, bald face, hind socks	5
Phar Lap	85 MH	dapple grey	500
Phar Lap	88 Y	blood bay	500
Phar Lap	88 Y	dapple gray	500
Phar Lap	88 Y	liver chestnut	500
Phar Lap	88 Y	sorrel, light m/t	500
Phar Lap	90 BF	"Doctor Peaches" bay, star, snip	
Pony of the Americas	90 CS	black leopard appy, black points	900-1000
Proud Arab Foal	83 PX	bay, star	
Proud Arab Foal	87 X	black tob. pinto, 4 white feet	
Proud Arab Foal	88 SX	bay pinto	
Proud Arab Mare	80 JAH	unpainted	
Proud Arab Mare	83 PX	bay, stripe	
Proud Arab Mare	85 MH, B	light chestnut, 4 socks, grey hooves	200-288
Proud Arab Mare	86 MH, LS	black, 3 stockings, white face	60-200
Proud Arab Mare	86 (88?) MH, LS	rose grey, 4 sks, pink nose	5-6

PEOPLE, PLACES & THINGS PEOPLE, PLACES & THINGS

Well....hope everyone that was able to attend a signing party was able to do so.....the BLACK HORSE RANCH Model Horse Faire was great fun.....all the hot and heavy trading/swapping/dealing going on was really exciting!!! And the weather was super...just perfect for a gathering of collectors. Peter Stone passed lists of the following models to be dropped from the current line:

1991 PROPOSED BREYER LINE (Revised) September 10, 1990

DISCONTINUED ITEMS

- | | |
|----------------------------|----------------------------|
| 140 Wing Commander | 807 Paint Horse Stallion |
| 206 Old Timer | 808 Paint Horse Mare |
| 411 Prancing Arab Stallion | 809 Paint Horse Foal |
| 430 Sherman Morgan | 811 Majestic Arab Stallion |
| 445 John Henry | 813 TB Mare |
| 455 Roy | 814 Family Arab Stallion |
| 709 Fighting Stallion | 815 Family Arab Mare |
| 802 Fade To Grey | 816 Family Arab Foal |
| 803 Galloping TB | 818 Saddlebred Weanling |
| 804 Proud Arab Stallion | 819 Dan Patch |
| 805 Proud Arab Mare | 3065 Mustang Family |
| 806 Proud Arab Foal | |

There are two new molds in the making....Misty's Twilight....a traditional Shetland by Jeanne Herrick and another traditional Lippazaner trotting..oops now I can't remember which one is being molded by Jeanne Herrick! Some of the colors are being dropped and new colors will be introduced...the ones I can remember... Sherman Morgan in black....Roy will be brought back but can't remember the color....the Family Arab Stallion and Mare are to be dropped next year....can you believe that!!!! The Commemorative Edition will be a #89 mold (Trad. Black Beauty) in Palomino...the poster horse for the Hooved Animal Humane Society named "Dreamweaver" and the Limited Edition will be a #401 mold (Trad. Black Stallion).....and will be done after an Egyptian Arab named "Hyskos" (at least this is what my scribbled notes say or what I can try to figure they say!)....and the Stock Horse family will be returning in another color...ditto for the PAS and PAM. Peter Stone did not mention it...but I'm sure that the retail cost of all Breyers will increase because of the rising cost of oil...not a pittance but quite a bit!!!! So one should purchase the currents now or before the end of the year to avoid those increases.

All the Christmas wish books are out and items are already on back-order.....at least the popular ones!!!! I'll give you all a quick run-down on all THREE catalogs that have special run Breyers.....

From J.C.Penney...the toll-free order number is 1-800-222-6161.... catalog # XU 6714554A is a traditional size dapple-gray Lady Phase, palomino Quarterhorse, red chestnut Rugged Lark...all three for \$35. (approx)..next set is 6 Little Bits..catalog # XU 6714570A for \$25. (approx) and the last set is the Classic Arab Family in black!!! Looks really sharp! Catalog # XU 6714562A for \$20.(approx)

From Sears.....the toll-free order number is 1-800-366-3000..... catalog # 49-N37914 is a traditional size Palomino blanket Appaloosa, black blanket appaloosa Performance Horse, a gray shaded leopard Stud Spider...all three for \$37.....next set is the Race Horse set....three traditionals that have been factory glossed.. in their original color..just glossed...Man O' War, Sham and Secretariat...catalog # 49-N37915 for \$37....and the last set offered is the Stablemate Assortment II..catalog # 49-N37911..... there are twelve models..all but one are different than the current run..ohhhh...and these also are \$37.....was someone in marketing/sales really into the number 37?

And the final special run comes from Country Store....we know alot of our readers might not have heard of Country Store and the reason they would be singled out to get an exclusive from Breyer while the other mail order houses have been asking for one is purely business.....and perhaps a quick thinking rep!! Anywho.... we understand the Country Store has a very large mail order circulation....ie..new customers to purchase Breyers and have them shipped directly to the home! Well...to get back to what it is Country Store has.....Haflinger in brown/white pinto, Canterng Welsh Pony is rose dapple gray and the Pony of America mold in black spot leopard Appaloosa...catalog #5523 for \$39.98....and the companies toll-free order number is 1-800-558-1013.....these three come as a "Three peice Horse set".

Try to order these before Christmas...Penney and Sears have open stock..so they can re-order from Breyer for more stock but Country Store is a special run of 900/1000 pieces...that is in sets! Tell your friends and family that you would like some of these Christmas run for a present this year....you can't go wrong ordering more than one set...and you'll get to act real surprised when opening and exchanging gifts...practice now, in front of the mirror!!!!

It's very sad news that Hartland Collectables will be shutting their doors as of December 31st of this year. If you would like to purchase any of the Hartland models, please do so right away! They are taking orders up till the end of the year....the new resin of the Arab gelding is available....it looks great..just like a real Arab should..right, Khemo? But all is not lost....the Hartland Lovers of America WILL STILL be holding the annual live horse shows in Napa, CA and Kansas City..hope I'm right on these locations...I believe HLOA is trying for an East coast show also!

Look forward to those Breyer prices going up...with the cost of oil sky-rocketing every day the cost of the plastic to make these models is also rising. Ask for Breyers for Christmas!!!!

LITTERBOX LITTERBOX LITTERBOX LITTERBOX LITTERBOX LITTERBOX

Rumored to be the new horses for next year....but you know Breyer ..could possibly change their minds....Brighty...Yes, Brighty in a new color...Proud Arabs in another color with the Family Arab as the foal..heard they were dropping the Proud Arab foal! New colors for the Old Timer, Sherman Morgan(Black),John Henry in Blod Bay.. Roy (dark coloring), Phar Lap as....Hobo...from Margarite Henry fame..rumor to have a new book in the works for Spring 1991 re-lease, Stock Horse Stallion painted as a REAL horse, and the foal looks to be different, Touch of Class, Sea Star, Phantom Wings, Morganlanz and the Running Mare and Foal. Now don't be callin Breyer to ask about the colors or tell them you'd like to see something else coming out.....this is just what been floating around since all the signing parties they had here in California.....we are a nosey bunch and just asked what was new for 1991....

Did you all love the accuracy of the Special Run list in the last issue of Just About Horses! How many glaring errors can you find? You'd think that the company could at least rifle through their own files and find the correct information!!!!

Heard that the Spring line of Hagen-Renaker miniatures will have alot of birds, some with the new pearl finishes added...heard that the doves, budgies and the robin might be among them. I noticed that the color/shading in the new sitting lion has been dropped....his coat is almost all tawny colored now, with no dark shading.....the seahorses are in orange purple and greenish/blue....if anyone has seen/bought a real blue one please let Heather know.

Also heard that the Export horses were done in very limited numbers on the black Secretariat and none were painted for the black Han-overian. A flyer was made available to the export buyers showing the two traditionals but no orders were placed of signifiant numbers. Perhaps we can suggest to Breyer that the models be made available to mail order houses here in the States!!!!!!

Now is the time to really get out there and hit ALL the Antique stores and Flea Market/Swap meets you can.....Decorators are being found...everyone is cleaning out attics, kids rooms and storage area to get some extra dough for the Holidays...so keep your eyes peeled...you never know what you'll find!!!! GOOD LUCK!

Had a fellow reader write to say she was turned into the Postal Master for mail fraud! Yes folks....she decided against her better judgement to join in on all those letters going thru the hobby. It didn't get her any big bucks just another inquiry by the Post Master.....please people...don't get sucked in by these letters!

Saw some of the current Christmas horses already on sales lists and yes...they are pricey! Check your mail order houses to see if any discontinued/special run models are still available....a quick phone call can get you that answer....Also check your feed store when looking for the Pinto Weanling..some carry Breyers!

Check out the Lenox horses....they started out with a black Arab, a Lippizaner another one I can't remember and the newest is a very nice Appaloosa...Gale Good collects them..I'll ask her for an addy for the next issue....you'll want to inquire...the pieces are really nice, action models!!!!Later....Happy Turkey!!!!!!!!!!

