

# The Model Rag

Volume 4, Number 3

June/July 1990

Single Issue: \$3.25



## NEW TEEN IDOL OR TAXIDERMIST'S DELIGHT?

(This lovely creation by JRP/PO'K/LB is proudly (?) owned by Laurie Jensen)

---

### Inside This Issue...

Model Horse Racing...The Laurie "Little Mermaid" Jensen Sing-A-Long... "Jabba The Slug?"...The First Annual Ugly Horse Remaking Competition...plus the usual (or unusual) stuff that we are known (or reknowned) for

## MODEL HORSES BY LAURIE JENSEN

All horses new, and come with halter pix. Money back guarantee - return horse within 10 days in good condition for full refund less postage. Prices include postage. Laurie Jensen, 32891 Calle del Tesoro, San Juan Capistrano, CA 92675. (714)661-1116.

LJ DESERT ECHO: Aged gelding remade from Proud Arabian Mare. Neck turned, tucked a bit. He's very lightly fleabitten with grey shaded knees and hocks. White hair mane and tail with strands of copper chestnut hair mixed in. Legs straightened, facial detailing, etc. \$105.00

LJ BAY BARON: Yellow Mount R/R/H to dappled black bay snowflake blanket Appaloosa. Head turned. Great expression, neat color. Has carved feet, detailed head, real metal horseshoes. \$105.00

Sorry, no trades. Thank you!

---

HARTLAND horse & riders for sale. Laura Diederich, Rt. 2, Berg Rd., Dodgeville, Wis 53533  
(608) 935-2301

Wyatt Earp rider on bay horse, correct saddle with yellow blanket, no hat-\$75

Gen. Geo. Washington on white Ajax with roached mane, no accessories-\$60

Paladin on semi-rearing white horse with black mane/tail, has black saddle but missing stirrups, no accessories (Paladin is missing thumbs)-\$65

Major Seth Adams on walking bay horse, white legs, has saddle (missing stirrups) no accessories-\$65

Sgt. O'Rourke on black chubby horse, has correct cavalry saddle (missing stirrups) no hat or gun-\$75

Tom Jeffords on walking grey appaloosa horse (few scuffs) has saddle (missing stirrups) no hat or rifle (Tom is missing both thumbs)-\$70

Cheyenne rider on semi-rearing chestnut horse, has saddle (no stirrups) no hat-\$55

Cochise rider on semi-rearing pinto, has correct saddle, rubs on rider, no access-\$65

General Robert E. Lee on correct horse, no saddle or accessories-\$55

Davy Crockett rider only, no accessories-\$65

Tonto on chubby brown pinto, no saddle or accessories-\$55

Matt Dillon on buckskin horse, no saddle or accessories-\$55

Jim Bowie rider only, no accessories-\$75

Roy Rogers on full rearing Trigger, has saddle (no stirrups) no accessories-\$55  
(Roy has a repaired leg) Trigger has scuffs

Small western champ rider on standing pal. western champ, no saddle or access.-\$45  
(horse has chipped ear)



## Cascade Models

Daphne R. Macpherson  
5310 - 136th Place SW  
Edmonds, WA 98020  
(206) 743-4650

**Wow!! Look What Just Arrived --**

FOUR exciting new molds from Hartland Collectables! Cascade Models has all four of these new RESIN CAST models available for immediate delivery:

The following two models are both Heritage Hopeful size; 4 - 5" at ears  
**POCKET PONY Quarter Horse**, standing with head raised into wind, mane blowing back. Dark Dapple Grey **\$45.00**

**POCKET PONY Tennessee Walker**, in "Big Lick" pose. Black with hand-painted braids, some white markings **\$45.00**

The models below are TRADITIONAL size; 11 - 12" at ears

**ARABIAN MARE**, color and pose unknown at press time. The model is done & ready to paint; Hartland Collectables hasn't decided what color yet, and couldn't recall the pose, but you can be sure it will be the usual beautiful Hartland Collectables work! **\$120**

**PERUVIAN PASO**, in Paso gait - right foreleg up & out, corresponding hind leg stepping under; head set correctly, done in beautiful sorrel with blond mane & tail, two hind socks & narrow blaze. **\$120**

### Also In Stock:

Item #	Description	Price
800	Heritage Hopeful, Resin Miniature Horse	\$45.00
400P	11" Quarter Horse, Blue Grulla Pearled	15.35
420	9" Arab Stallion, Lt Bay	12.00
421	9" Arab Stallion, Chestnut	12.00
422	9" Arab Stallion, Lt Dapple Grey	12.00
431	9" ASB, Dapple Palomino	12.00
432	9" ASB, Red Roan	12.00
433	9" ASB, Lt Bay	12.00
462	9" Thoroughbred, Gold Metallic	13.95
491	6" Weanling Foal, Lt Bay w/White Sock	8.25
495	6" Weanling Foal, Blue Roan Metallic	8.95
501	7" TWH Family Set, Lt Bay	21.50
521	7" Arab Family Set, Rose Grey	21.50

Send \$1.00 and LSASE for current stock and item prices on the following:

Sojourner Tack	\$6.75 - 69.00	Dixie Tack Shop Tack	\$7.00 - 58.00
Barnabee Horse Clothes	\$3.00 - 17.50	Wind Dance Ranch Show Halters	\$5.00 - 6.00

Make check or money order payable to: **Daphne R. Macpherson.**

Include shipping/handling: Up to \$25. \$3; \$26 to \$50, \$4; \$51 & up, \$5. All items shipped UPS; provide a street address for delivery if you use a PO Box.

!!!!HURRY- REDUCED FOR QUICK SALE !!!!!

FOR SALE: A Few quality horses from MY SHOWSTRING. All are in excellent condition and have pictures. Prices do not include postage. \$3.00 postage per model. Money orders are preferred. I will consider trades for Deb Preuit horses. Let me know what you have. Please include a SASE with all inquires.

MARGARET SUCHOW  
30 BRAIM ROAD  
GREENFIELD CENTER, NEW YORK 12833

1. DQ FORTUNES GRACE- PAS RRH by Linda Leach Hardy. Now a gorgeous dapple grey Arab stallion with eyelashes and shoes. Multi-Multi photo Grand Champion. \$95.00 ( A steal at this price- less than I paid)
2. DQ GINGERSNAPS-STUD SPIDER RH by Linda Leach Hardy. Flashy Chestnut leopard Appaloosa mare. Champion photo shower and live show placed. I have too many appys. \$85.00
3. PEARLS N' DIAMONDS-SHM RRH by Kathy Maestas. Now a lovely grey QH Mare, LSQ. Has over 50 pix in halter and performance. \$90.00
4. DIAMOND DESERT SPIRIT- RUGGED LARK RRH by Kathy Maestas into a gorgeous paint stallion. Live show placed in California. HE is now cantering. Has over 50 pix in halter and performance. \$150.00
5. APPLE BLOSSUM ROSE- Classic Swaps RRH by SUE GUFFEY into an American Shetland Pony mare with ribbons in her mane. She is in a proper show stance. Comes with pix in halter and harness. Formally called Garnish with Roses. I don't show classics much. \$50.00
6. SMOKE STACK- SMOKEY RRH by Barbara Jones into a Mousse Dun Gotland pony Gelding. An absolutely fabulous model by Barbara. His color is terrific. I don't show ponys much. LSQ. Live show placed at MAR, 1990. \$200.00
7. MS MOONSHADOW- CM RRH by Margaret Suchow. Head turned to the left. A beautiful black clysdale mare with white feathers and a white face. Champion photo shower and Live show placed at MAR, 1990. May change my mind on this one. \$85.00. (has mane decoration & glass eyes)
8. MS LENINGRAD- Justin Morgan RRH by Margaret Suchow into a beautiful chestnut Russian Heavy Draft horse gelding. Photo show champion in limited showing and live show placed at MAR, 1990. \$75.00 (he has roses in his mane & tail and glass eyes, carved ears)
9. MS DREAMMAKER- PAS RRH by Margaret Suchow. Head turned to the right and neck more arched. He is painted a mahogany Bay with black points, mane and tail. Glass eyes. Unshown. \$65.00
10. ZAHARA- Western Prancer RRH by Ray ANN Sneathen into a beautiful rose grey Arab mare. Pix in Halter, EP, Jumping, Trail. LSQ. Unshown by me. \$125.00

\*\*\*\*\*

**FOR SALE FROM FOXSHIRE FARMS:** All items postage paid, please enclose a SASE with all inquiries. All horses have photos for viewing. Please have a look and give a good show home!

**LISA ABBOTT, 23645 N. MEADOWRIDGE DR., APT. 94, NEWHALL, CA 91321**

1. **HOOSIER GOLD DECK** - Customized Lady Phase by Ray Ann Sneathen. Airbrushed a gorgeous golden buckskin with black points and black mane/tail. Remade with head and neck turned. Super live and photo show horse. Halter photos. **\$100.00**
2. **KINGSPRIDE** - A new horse here, a customized Morgan body with a Black Beauty head. Now an airbrushed rich bay 3-Gaited ASB in a very stretched stance by Ray Ann Sneathen. Great horse for the ASB lover/shower. Multi Champ live and photo for previous owner, Comes with a full set of halter and performance photos. **\$150.00**
3. Beswick "The Winner", gloss bay, disc. model, excellent cond. **\$100.00**
4. Beswick Connoisseur "Burnham Beauty" Shire Mare. Matte chestnut, large horse in excellent condition. Very impressive horse! **\$200.00**
5. Small Beswick horse, matte bay, unknown model #, has photo. **\$30.00**
6. Beswick Gloss Dapple Grey Xayal, one small factory flaw on leg, does not show in photos. Otherwise excellent. **\$20.00**
7. Beswick Connoisseur Arab on base. Matte dapple grey, beautiful model and a great show horse. Comes with custom arab bridle by Sue Rowe. **\$170.00**
8. Beswick Connoisseur TB on base. Matte bay, also another gorgeous model, comes with a card describing Beswick History. **\$165.00**
9. H-R Matte bay Two Bits, San Marcos. Mint. **\$55.00**
10. H-R Matte bay Erin, San Marcos, Mint. **\$45.00**
11. H-R Matte bay Shamrock, San Marcos. Mint. **\$25.00**  
Set of 3 above for **\$110.00**
12. H-R Matte palomino 9" Amir. Excellent condition. 1 excellently repaired ear tip, live shown successfully. **\$130.00**
13. H-R Matte doeskin 6" Zara. Good detail, excellent condition. **\$100**
14. H-R Matte Chestnut Forever Amber, excellent condition. **\$40.00**
15. H-R Matte Chestnut Lippett, excellent condition. **\$45.00**
16. Breyer SR Roan App. Yearling from Just About Horses. Mint. **\$15.00**

#### TACK

1. Trad. Western Bridle by Kathleen Maestas, Excellent Cond. **\$10.00**
2. Sue Rowe Classic English Snaffle Bridle. Brand new, never used, black leather. **\$6.00**
3. Sue Rowe Trad. D-Ring Snaffle Bridle. Brown leather. Excellent Condition. **\$10.00**
4. Sue Rowe Classis Fine Arab Halter. Brand new, never used. **\$5.00**
5. Classic Arab Skirt Western Saddle, Black leather, fully tooled, made by Kathleen Bond who makes Hartland's saddles. Never used, really beautiful! **\$45.00**
6. Sue Rowe Classic English Saddle. 1 brown and 1 black. **\$25 each.**
7. English saddle, good beginner saddle. Includes pad. **\$7.00**

For Sale from Endless Mountains Stables--Cindy Hollister, RD 2 Box 230 Meshoppen, PA 18630--Prices include postage-SASE for insp. pic- please return ASAP. Time payments okay.

1. Brey. cl. 'Sagr' RH by Kathy Maestas to dappled golden chestnut Arab mare, flaxen m/t, georgous. Multi-multi champ, pix by Maestas hate to sell, \$95
2. Brey. cl. 'Black Stallion' rep. by Karen Malcor to beautiful liver chestnut, must see, pix & negs. by Karen, \$45
3. Brey. TWH RH by K. Malcor to pure white, white m/t, blue ribbons. Halter pix & negs. by Karen, \$45
4. Brey. El Pastor RH by Kathy Burns to blue roan, black m/t. Halter pix & negs by Carol Gerhard. \$55
5. Brey #401 Black Stallion RH by K. Burns to georgous liver chestnut flaxen m/t, multi-champ, pix & negs by Gerhard \$60
6. Brey. cl. And. mare rep. by Burns to buckskin, pix & neg. by Gerhard \$40
7. Brey. SM Morgan stallion RR by Donna Sloan to dusty chestnut, flaxen m/t, pix & neg. by DRM Origonals, \$30 ppd.
8. Brey. El Pastor RH by Burns to georgous buckskin. Great Paso Fino stallion, halter pix & negs by Gerhard, \$55
9. Brey. SHS & diff. head RRH by Sue Guffy to dark bay/black Peruvian stallion, great termino, multi-champ, hate to sell. All new pix & negs. by Gerhard. \$95
10. Brey. Morganglanz RRH by Janice Meixner to honey bay, 2 socks, blk, m/t. Super shower, WABR Horse of the Year 1989, countless champs, 7 sets pix & negs by Gerhard, \$100
11. Brey. El Pastor RH by Janice Meixner to dapple grey, mostly white mixed m/t, multi champion Paso Fino stallion. 7 sets pix & negs by Gerhard. \$90
12. Brey. Black Stallion w/ B. Beauty head RRH by Burns to bay Peruvian mare, multi-champion, pix by Burns and Gerhard, negs \$85
13. Indian Silk, multi champion sorrel semi-leopard App rep. only by Mary Kingery. Done in oils, quite old. Photo show quality only, still winning. Pix & negs \$50
14. Brey. Running mare & foal set, floxed palomino, exc. cond \$50
15. Brey. True Bay Clydesdale stal/mare/foal set, exc. cond. \$60
16. Brey PAS floxed chestnut, w/halter, exc. cond, \$30
17. Brey. App Perf. Horse, chestnut/blanket App, exc. cond, \$25
18. Brey. 'Adios' chestnut semi-leopard, exc. cond, \$25
19. Brey. QH Yearling, bay sl. yellowed, \$15
20. Brey. Foundation Stallion, liver chest. & dapple grey, \$25 each
21. Brey. 'Cips' mint cond. \$25
22. Brey. Belgian, chest, smoke, bay, dapple grey, \$45 each
23. Brey. Clydesdale mare, floxed chest, w/halter, exc. \$30
24. Brey. Stock Horse Stallion Bay pinto, exc. \$35
25. Brey. FAS & F, set, grey blanket App, sl. yellow, \$25
26. Brey. FAM & F, set, bay, very sl. yellowed, \$20

FOR SALE -- prices include postage. No pix unless stated, sorry. For refund - less postage - return model within 10 days and state why. SASE please with all correspondence or no reply. Terms - under \$100, to 30 days - over \$100, to 60 days - Thanks. Karen Turner, 7350 Bulen Dr., Anchorage, AK 99507. (907) 344-8297. No collect. No calls before 9am Alaska time, please. (PLEASE check time zone map in the front of your phone book). Phone orders held 7 days only.

### Special Run Breyers

Azteca-'87 choc. sor. EC 15.  
Welsh-'86 dap. grey EC 40.  
Belgian-'86 bay EC 18.  
Trakhener-'87 bay EC 40.  
Shire-'85 bay EC 50.  
Mustang-'87 flea. grey EC 18.  
Pacer-'84 bay/sox EC 35.  
Halla-'89 grey roan EC 15.  
SSHF-'84 buckskin EC 12.  
Morganglanz-'89 bay EC 15.  
Hanoverian-'87 Black EC 50.

### Regular Run Breyers

Azteca-red roan EC 15.  
Fam. Arabs-matte alabaster EC 60/set  
Bronco-red roan SR, old black(GC) 25ea.  
Bronco-old bay EC 40.  
Morgan-bay/bald/eyewhites GC 40.  
Graz. m/f-bay EC exceptional 50/set  
Shetland-gl. alabaster VVGC 15.  
Cips-bay pinto EC 25.  
El Pastor-bay.VVGC 30.  
Old Timer-bay EC 20.

### Custom Models

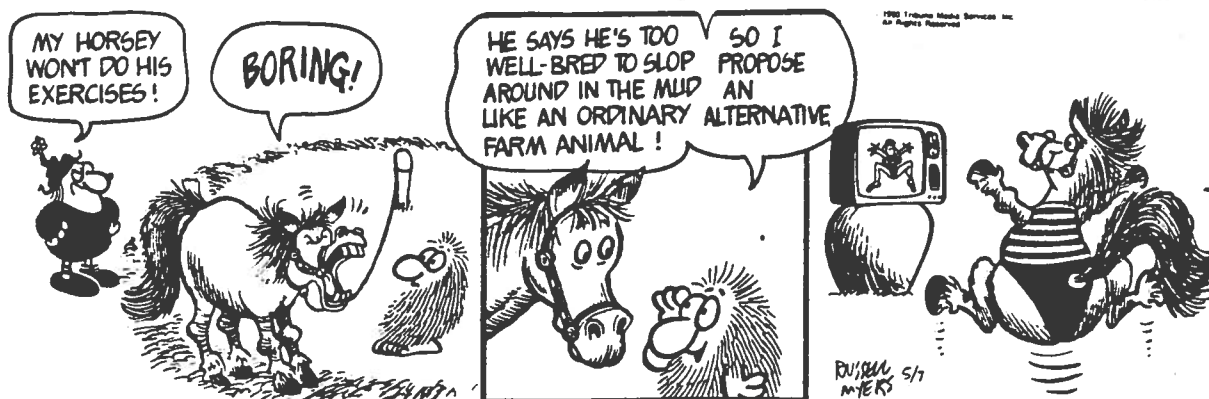
1. SHS - Cantering Dapple dk. buckskin by Deb Preuit. Extremely nice. Pix in halter, WP. \$150.
2. Lady Phase - repaint/hair only by Preuit. Bay tobiano. Halter and WP pix. Beautiful mare. \$100.
3. Classic Sagr - by K. Cassavant, Dreams by Design. To trotting Welsh pony mare, blood bay. Gorgeous! Two full sets of showpix. \$110.

### Others

Bes. Black Beauty adult-1 clean break. 35.  
Bes. 1771 Arab - gl. brown. perf. 50.  
Old Hart. 9" grazing mare - blood bay. EC/tiny eartip rubs 25.  
North Lights large Shire Stallion - bay EC 95.  
H-R DW Swaps - San Dimas. Perfect. Ex. color/detail 125.  
H-R mini pandas 5/pr.  
H-R mini seal mama/baby- Monrovia. 10/pr.  
H-R mini Boston terrier mama/baby 5/pr.  
Old J.O. Kangaroo mama/baby in pouch 7" 15.  
Old J.O. Ostrich mama(one break) and 2 babies 7" 15.

### **Broom Hilda**

By Russell Myers



# I WANT TO GO TO BREYERFEST TOO!!

Cheryl Munde, 1025 Sheffield Pl., Thousand Oaks, CA 91360-5353, (805) 496-0299

## MODELS FOR SALE - ends July 20th, 1990

ALL ARE IN EXCELLENT CONDITION. SEND SASE WITH INQUIRIES. PRICES INCLUDE POST OFFICE AND INSURANCE DELIVERY ONLY. NO UPS. CHECKS MUST WAIT UNTIL THEY CLEAR BEFORE MODELS ARE SHIPPED.

**SIX MUSTANGS** - BAY BLANKET, ALABASTER, FLEABITTEN GREY, DUN, LEOPARD, PALOMINO, DUN + T-SHIRT. WILL SELL AS SET ONLY. THIS IS A SPECIAL BY BLACK HORSE RANCH. \$160.00 FOR ALL, PPD.

**FOUR BUCKING BRONCOS** - LEOPARD, CHESTNUT, GRAY, ALABASTER. SET ONLY-\$110.00 PPD.

**RUNNING STALLIONS** - BAY \$50.00, JAH SR SORREL (#1174) \$60.00, all ppd.

**TRAKEHNERS** - BAY \$50.00, SR CHESTNUT (#0147) \$70.00, all ppd.

\*\*\*\*\*

**CHIQUITA HILL** - SHERMAN MORGAN CUSTOMIZED BEAUTIFULLY AS A MORGAN MARE BY THE TALENTED PATTY ROHLFING, WHO DOES NOT TAKE ANY MORE CUSTOM ORDERS. CHIQUITA IS BRAND NEW BUT I DON'T SHOW MORGANS ANYMORE, SO I AM GIVING SOMEONE ELSE THE OPPORTUNITY TO SHOW AND WIN WITH HER. CHIQUITA IS IN A STRETCHED SHOW STANCE, REPAINTED A LOVELY REDDISH SORREL WITH GOLDEN FLAXEN MANE AND TAIL.

**VALENTINO** - CHIQUITA HILL'S FIRST FOAL. VALENTINO IS A CHARMER, THE CLASSIC ARAB STALLION REMADE AS A MORGAN STUD COLT IN A STRETCH SHOW STANCE WITH SLIGHTLY TURNED HEAD AS IF TO SAY TO THE JUDGES "LOOK AT ME!". HIS SIRE IS THE AWESOME *STARDOM SENSATION*. HE IS A HANDSOME LIVER CHESTNUT WITH FLAXEN MANE AND TAIL, ANOTHER ONE OF PATTY'S MASTERPIECES.

BOTH OF THESE LOVELY CREATIONS WILL ONLY BE SOLD TOGETHER, THEIR NAMES AND PEDIGREES MUST STAY THE SAME. I REALLY WILL HATE TO PART WITH THEM BUT I NEED THE MONEY. THEY COME WITH LOVELY HALTER PICTURES BY THE INFAMOUS CAROL GERHARD, PEDIGREE PAPERS, AND LOTS OF PACKING PEANUTS. PRICE: \$190.00 UPS OR INSURED PPD.

\*\*\*\*\*

## SPECIALTY TACK - ALL NEW! LSQ AND AFFORDABLE!!

- AUSTRALIAN STOCK SADDLES AND HALTER/BRIDLE (\$50) - New! Matching saddlebags (\$10).
- CAVALRY SETS (\$50) - Union or Confederate, halter/bridle, saddlebags, flag boot
- INDIAN SADDLE AND TRAVOIS (\$60) - lots of fur, saddle tree made by Donna Fisher!
- TIPPEE (\$50) - lots of fur, includes bear rug.
- BULL/BRONC RODEO SET (\$50) - a ten-piece set for bronc, bull, bareback.
- ARMOR (\$75) - fully tooled, silver painted, felt barding.
- PACK HARNESS (\$50) - wood tree, panniers.
- CANOES (\$35) - lots of fur, wood paddle.
- CHARIOT TEAM HARNESS (\$50) - two harnesses to pull a fast chariot!

**WRITE TO:** Cheryl Munde, 1025 Sheffield Pl., Thousand Oaks, CA 91360-5353 for more information.



Karen Davis- 409 Whitpain Hills-Center Square, PA 19422 (215)279-1665

My entire collection is for sale. This is just an inkling of it! Please write for full list of Beswicks, Breyers, HR, and some Hartlands, and Repts.....

Please Add Postage.

HR's

ASB in SR Matte/Gloss Palo. \$200 Each  
 ASB in Matte/Gloss Brown \$150/Each  
 Lippizan in Matte/Gloss white \$175/Each  
 Lippet in Palo. 1 repair \$200  
 Forever Amber in palo. \$275 BEAUTIFUL!!  
 Thunder in Brown \$350  
 Miss Pepper in Palo. \$250  
 Clydesdale in matte/Gloss \$175/each  
 Amir 9" in gloss white \$250, Gloss Palo. w/ 2 clean Repairs \$150  
 Zara 9" in Gloss white \$250, Gloss Palo. \$250  
 Zilla 9" in Gloss white \$150, Gloss Rose Grey \$150 Gloss Palo. \$150  
 SR QH in Dark Brown Appaloosa #001 \$175  
 Head Up/Head Down Ponies in gloss /matte white, gloss/matte sorrel \$175/  
 King Cortez-Gloss White \$200 each  
 King Cortez-Matte white/1 repair \$180  
 Amir 6" White \$175 Rose grey w/repairs so clean you cannot see! \$200  
 Metalchex- Gloss/Matte Buckskin, Gloss/Matte Sorrel \$250/each

MINIS

233 Stand. Horse in gloss palo. \$105  
 146 Saddlehorse Palo. \$80  
 390 Morgan Colt Brown \$70  
 429 Stallion Palo. matte \$125  
 047 Arab Stallion in doeskin, white \$100/each  
 049 Arab Colt in white \$75  
 360 Stand.Horse matte bay \$125

DOGS

Patsy- Cocker pup in matte/gloss \$80/each  
 Champ- large sitting Boxer pup matte \$60  
 Honey Girl Matte \$80

Prince Gloss \$80

Queenie-Matte \$80

Spooky-Gloss \$80

Brunhilda Gloss \$80

Monicle Matte \$70

A SAMPLING OF BESWICKS AVAILABLE

lying foal #915 Gloss grey, brown, palo.

matte brown \$48/each

lying Draft Foal in gloss brn. \$105

Donkey Foal #2110 \$70

Horse #855 Gloss Grey, palo. Brown \$75/each

Arab #1771 Gloss Palo. ; brown, grey \$125/each

Palo. #1261 Gloss brown, grey palo.

matte brown, grey palo. \$80/each

Welsh Cob # 1793 Gloss Brown \$150

THE WINNER #2421 Gloss Brown \$180

JULIE FROELICH Custom  
Beautiful Rose Grey

Arabiän Stallion in a  
 trot on base. Hair M/T

You'd never believe it  
 was the FAS Mold! About

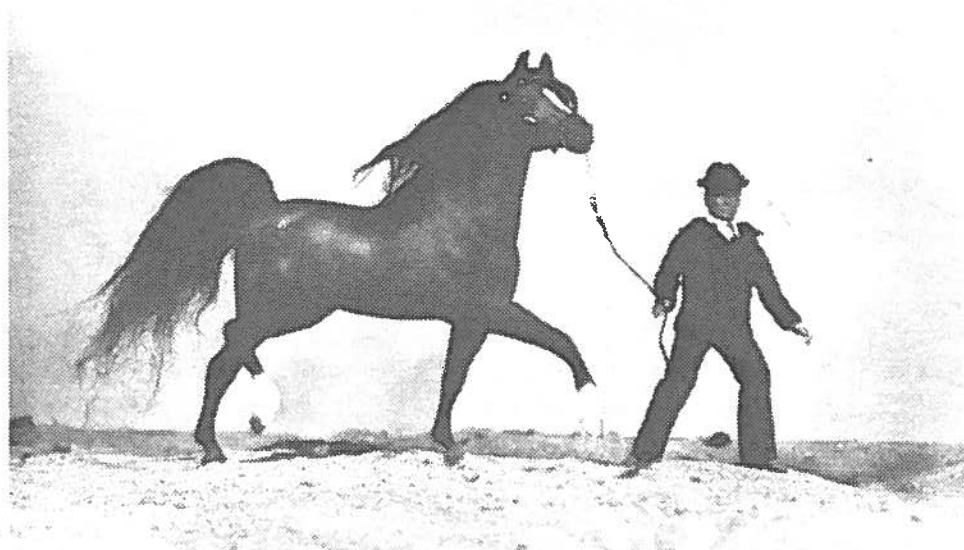
40 photos/neg. \$300 Definite Live Show Quality!!!!

CONN. SERIES BURNHAM BEAUTY in matte/gloss \$380/ea

\* DIAMOND CAVALIER +++++

"The Legend"

Is Being Offered For Sale:



Perhaps the greatest Model Arabian Showhorse of all time is for AUCTION. There is no need to mention the endless list of titles and championships that he has won. You all know his reputation!

\*Diamond Cavalier was completely customized from a Breyer Proud Arab Stallion, and a Running Stallion by Kathy Maestas. He has over 200 photos in numerous performance events. He is in Top Condition, and is live show quality. He is mounted on a wooden base, with a brass nameplate.

AUCTION RULES: Bids must be in dollar increments. SASE for viewing pics, and status of bids, please. Phone bids must be backed-up in writing. 50% Deposit (non-refundable) upon notice of winning bid. Payment in full by November 1, 1990. Money orders, or cashier's checks only. I will pay shipping costs. I reserve the right to pull \*DIAMOND CAVALIER from the auction at any time.

STARTING BID: \$200.00

AUCTION DEADLINE: Sunday, September 9, 1990; at 9:00 PM Eastern Time.

INQUIRIES: Mindy Binkley; 4331 N.W. 7th Court; Plantation, Florida 33317  
Phone: (305) 583-1553 -- evenings until 9:00 PM. No Collect Calls.

Howdy! I still have a bunch of these guys to sell. Send long SASE for my complete list- over 200 in all. I also have some horse books for sale, including about 10 by Will James (send SASE for list). Sorry, I don't have any viewing pictures. Please call me (no collect calls) if you want more information. Please don't call between 9:30PM and 7:30AM. All models will be sent UPS unless you request USPS. For shipment within the continental U.S. please add \$2.50 for the first model, and \$1 for each additional. Excess postage over \$1 will be refunded if you send a SASE, and please send a SASE with ALL inquiries- the model you want may have already been sold. Checks and money orders in US funds only; I will ship when check clears. Refunds (less postage) will be made if buyer feels the condition was not accurately stated. You MUST write or call me within a week of receiving model if you wish to return it; I will let you know my shipping address. Thank you! Liz Strauss 2369 Tiffin Rd. Oakland, CA 94602-2550 (415)482-1508

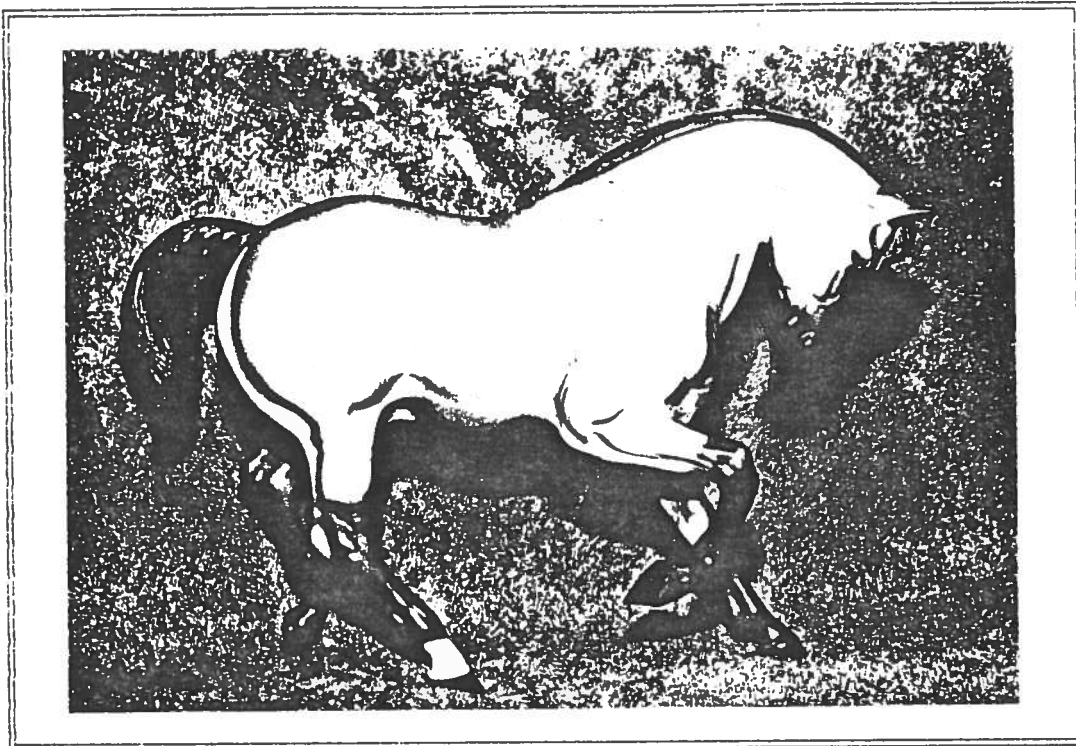
1. #4 Glossy Palo. FAS, vg. \$23
2. #5 Gl. Palo. FAM, vg-ex. \$25
3. #6 Gl. Palo. FAF, vg-vvg. \$15
4. #7 Gl. Alab. FAS, vg-ex. \$22
5. #8 Matte Alab. FAM, ex. \$25
6. #8 Gl. Alab. FAM, ex. \$25
7. #9 Gl. Alab. FAF, ex except sl. yellowed. \$12
8. #13 Matte Bay FAS, vg. \$18
9. #13 Gl. Bay FAS w/factory eyewhites, vg-ex. \$32
10. #14 Matte Bay FAM, vvg. \$21
11. #14 Gl. Bay FAM w/factory eyewhites, ex. Super nice! \$35
12. #15 Matte Bay FAF, vg. \$12
13. #15 Gl. Bay FAF, ex. \$15
14. #17 Brown Spotted Stock Foal, vg. \$13
15. #27 Black Fury, vg. No reins or saddle. \$28

16. #30 Gl. Alab. Fight. Stallion, vg. White! \$60
17. #33 Gl. Palo. Fight. Stallion, vg-ex except broken ear tips, & yellowed. Beautiful dark gold color. \$30
18. #33 Gl. Palo. Fight. Stallion, vg. White! \$50
19. #36 Gl. Chestnut Race Horse, gd-vg. Some light rubs. \$50
20. #37 Matte Appy FAS, vg. \$18
21. #37 Gl. Appy FAS, vg. \$20
22. #38 Matte Appy FAM, vg. \$19
23. #39 Matte Appy FAF, vg-vg. \$15
24. #39 Gl. Appy FAF, ex. \$16
25. #41 Gl. Black Pinto West. Pony, vg. Reins only. \$14
26. #42 Brown Pinto West. Pony, gd. No reins or saddle, gold eyes. Ear edges banged up. \$18
27. #45 Gl. Alab. West. Pony, vg. Reins only. \$23
28. #52 Sorrel Five Gaiter, vg, with blue ribbon sticker. Sticker streamers have crease marks. \$28
29. #52 Sorrel Five Gaiter w/factory eyewhites, vg-ex. \$35
30. #53 Glossy Palo. Five Gaiter, gd. \$30
31. #54 Trakehner, vg. Rt. ear tip bent. \$30
32. #56 Gl. Brown Pinto West. Horse, gd. Very white. Ear tip broken. No reins or saddle. \$22
33. #57 Gl. Palo. West. Horse, vg. No reins or saddle. \$20
34. #63 Halla, vg. \$20
35. #64 Black Found. Stallion, vg-ex. \$16
36. #65 Justin Morgan, ex. \$12
37. #66 Gl. Boxer, vg-vvg. \$25
38. #67 San Domingo, ex. With box. \$23
39. #81 Donkey, vg. \$18
40. #85 Gl. Alab. Mustang, gd-vg. Brown eyes. Not yellowed. \$60
41. #97 Appy QH Geld., vg. \$18
42. #98 Buckskin QH Geld., gd. \$14
43. #99 Appy Perform. Horse, vg. \$30
44. #101 Liver Chestnut QH Yearling, vg. \$24
45. #103 Sandy Bay Appy QH Yearling, vg-vvg. \$15

46. #110 Smoke West. Prancer, vg. Reins only. White! \$22
47. #112 Palo. West. Prancer, vg. Reins only. \$16
48. #115 Gl. Appy West. Prancer, vg. No reins or saddle. \$30
49. #119 Red Roan Runn. Mare, gd-vg. \$45
50. #120 Alab. Runn. Mare, vg. \$35
51. #123 Gl. Dapple Runn. Mare, ex. \$40
52. #127 Appy Runn. Stallion, vvg. \$20
53. #130 Alab. Runn. Foal, vvg. \$25
54. #133 Gl. Dapple Runn. Foal, vvg. \$20
55. #153 Palo. Grazing Foal, vvg. \$15
56. #154 Bay Blanket POA, ex. \$25
57. #165 Appy Lying Down Foal, ex. \$18
58. #167 Red Roan L. Down Foal, ex. \$40
59. #168 Appy Scratch. Foal, mint with box. \$18
60. #170 Red Roan Scratch. Foal, vg. \$40
61. #175 Brown Pinto Indian Pony, vg. Warpaint. L. ear tip bent. \$65
62. #180 Alab. Rearing Stallion, ex. \$15
63. #183 Palomino Rear. Stallion, sealed in box. \$15
64. #201 Matte Charcoal FAS, vvg. \$21
65. #203 Matte Charcoal FAF, vvg. \$14
66. #203 Gl. Charcoal FAF, vvg. \$15
67. #205 Gl. Dapple Old Timer, ex. No hat. \$23
68. #212 Bay PAS, vg. \$23
69. #216 Bay PAM, vg-vvg. \$24
70. #218 Gl. Old Mold PAF, vvg except no tail. \$7
71. #218 Matte Alab. PAF, vg. \$14
72. #219 Bay PAF, vvg. \$12
73. #232 Bay Blanket Appy SHS, ex. \$18
74. #234 Gray Appy Standing SHF, new in box. Solid face. \$15
75. #236 Sorrel Action SHF, new in box. \$15
76. #909 Woodgrain FAF, vvg. \$24
77. #3155 Tbd. Mare, vg-vvg. \$22
78. 1987 SR USET horse- Might Tango in Bay, ex. \$15
79. 1987 SR USET horse- Jet Run in Chestnut, ex. \$15

80. 1987 SR USET horse- Keen in Light Gray, vg. \$10
81. SR CAS- Blood Bay w/ star & snip. Mint. \$20
82. SR CAM- Rose Gray, factory rub on nose. \$20
83. SR CAF- Blood Bay, mint. \$12
84. Enchanted Doll House SR Prince, Pride, & Joy- Gl. Alab. Family Arabs, signed by Peter Stone. Excellent. See how pretty these guys look when new! \$65/set
85. Sears' 1985 SR Red Bay Pacer, vvg. \$35
86. SR Flea Bitten Gray Canterling Welsh Pony, ex. \$45
87. SR Black Pacer, mint. \$30
88. SR Sorrel Phar Lap, ex. \$45
89. SR Solid face El Pastor, ex. \$35
90. SR Count Fleet (Classic Terrang in brown), mint. \$15
91. SR Golden Bay Trakehner, ex. \$40
92. SR Rose Gray Johar & Gray/Bay CAF, ex. \$40/set
93. SR Chestnut Hanoverian, ex. \$55
94. SR Black Hanoverian, ex. \$55
95. Josef Original Old Version 7" Arab Stallion, Gray w/Shading. Front legs each have one repaired break. Left ear broken, rt. ear tip chipped slightly. \$25
96. Josef Original Old Version 7" Arab Stallion, Palomino. Broken right ear. \$35
97. Beswick Sitting Siamese Cat, about 4 1/2" high, with green sticker. Fronts of ears are chipped- would look ok if touched up. \$10
98. Mortens Studio #763B, Standing Tan Cocker Spaniel. Several large paint chips, plus chips gone out of left ear. \$18

BLACK HORSE RANCH  
presents  
a new special run limited edition model from  
HARTLAND COLLECTABLES



" D U N I N D R E A M S "

Created exclusively for BHR, this 11" model is patterned after the real horse owned by BHR. This filly was born January 12, 1990, an Appaloosa daughter of World & Nat'l Champion Stallion, Dreamfinder, out of '89 Top Ten 3 year Old Mare, & '89 Nat'l Top Ten Mare, Makin' Music. She is a stunning colored red dun, with a dorsal stripe, blaze & snip, and hind sock. The model is enhanced with lightly painted leg stripes. Only 250 pieces have been made, each serialized with their production number. [REDACTED]

[REDACTED] Projected delivery is [REDACTED] June, but please do not delay in ordering. Price per horse is \$21.75 plus \$2.25 shipping (UPS only). There is no limit on quantity you may order. For those of you investing in models to later trade, we offer a special price of 2 models for \$39.00 plus \$3.00 UPS. Please use order form to order this model. Models will be shipped out as soon as we receive them, with lowest serial numbers going to first customers.

ALSO COMING THIS SUMMER....

Another BHR exclusive special run by Hartland Collectables.....

" S C A M M E R a n d B L A C K E M B E R S "

we will keep you posted.....they look great!

## DISCONTINUED BREYER SALE

All are in very good to excellent condition unless otherwise stated. Please add \$3.00 postage for one model, an additional \$2 for the second model and \$1 for every model after that. Satisfaction guaranteed or return models for refund minus postage.

Gale Good 1359 Sherrill Street, Anaheim, CA 92804  
 (714) 828-5843 evenings M-Th 4:30-6:30 p.m. and 8:30-10:00 p.m.  
 Call Fri. or weekends at your own risk; I'm rarely home then.  
 NO COLLECT CALLS

BREYERS:

Grazing Mare, black w/older black painted hooves-\$60  
 Grazing Mare, bay w/black hooves & blaze not bald face-\$60  
 FAM, glossy appy w/white across hips/barrel & nice spotting-\$20  
 FAS & FAM, glossy cream palomino w/some rubs-only \$20/set  
 Balking Mule, bay w/tiny rubs on ears, muzzle, and hooves-\$90  
 Fighting Stallion-dark bay, one tiny rub-\$25  
 Clydesdale Stallion, glossy dapple grey w/large dappling, very pink nose & ears-\$75  
 QH Gelding, glossy bay w/a couple of tiny rubs-\$60  
 Western Prancer, glossy appy w/reins but no saddle, slightly yellowed-\$25  
 Western Prancer, dark grey w/a few rubs, no tack-\$20  
 Western Prancer, nice dark buckskin, no tack-\$35  
 Western Saddlehorse, glossy white, no tack-\$35  
 Western Saddlehorse, glossy older black pinto, no tack-\$20  
 Western Pony, brown pinto, slightly yellowed, no tack-\$20  
 Running Mare & Foal, dark smoke grey w/a few rubs-\$30/set  
 Running Foal, glossy d.g. w/spots on rump only-\$20  
 Running Foal, glossy d.g. w/spots up to the withers-\$15  
 Running Foal, white, slightly yellowed-\$8  
 Mustang, chestnut-\$20  
 Mustang, glossy alabaster, very white w/brownish red eyes-\$100  
 Yellow Mount, a few tiny rubs-\$30  
 Stretched Morgan, black w/bald face, black hooves, eye-whites, has just the tip of one ear missing-\$40  
 PAM, old mold glossy white, rubs on tail/hooves-\$15  
 PAM, old mold glossy bay w/missing eartip & a few rubs-\$20  
 PAM & PAF, old mold glossy white, slightly yellowed-\$30/set  
 FAF, glossy bay w/black mark on rump-\$8  
 Lady Phase-\$30  
 Black Bear & Cub, black w/some rubs-\$20

LIMITED EDITIONS/SPECIAL RUNS:

Clydesdale Foal, (1979 Special Run) dark dapple grey w/large dappling-\$75  
 Phar Lap, (Special Run-only 500 made of each color) red bay, liver, and chestnut-\$45 each  
 Legionario, (Special Run chestnut)-\$45  
 SILVER-dark grey QH Gelding (1989 Ltd. Ed.) mint in box-\$45  
 ASB WEANLING-chest/pal pinto (1990 Ltd. Ed.) in box-\$55

OTHERS:

Hartland Polo Pony-deep, rich bay; older version-\$25  
Hartland 7" bay TB grazing mare and foal-\$16  
Hartland 9" bay TB stallion-\$12  
Hartland 9" bay stand/walking horse, no saddle-\$12  
Hartland 9" 3-Gaiter, woodgrain/walnut-\$12  
Hartland Budweiser Clydes, on two legs (copies are on three), no base-\$15  
Poppytrail Dobbin, bay (molded) harness horse-\$35  
Goebel 4" brown pinto Shetland Pony-\$20  
HR mini brown percheron w/harness-\$10  
HR mini dark grey sitting donkey-\$15  
HR 5" white matte Zilla foal w/well mended tail-\$75  
HR mini glossy white stallion on plastic base (not old)-\$5  
HR DW Siamese Kittens, San Dimas, glossy, one sitting, one ready to pounce-\$15 each  
HR mini Monrovia standing doe w/black/rust eyes, gloss-\$15  
HR mini fat, fluffy sitting cat, orange, eartip chipped-\$15  
Franklin Mint black porcelain Black Beauty-\$100 (an ad in Horse Illustrated magazine (July 1990) has this model going for \$175. Postage charge for this model only is \$5 as it will require special handling.)  
Beswick copy of stretching foal, grey-\$10

REPAINT/REMAKE PROSPECTS: (NOTE: they're either very yellowed or have lots of rubs)

Running Foal, w/eartip missing-\$3  
Misty-\$6  
Clydesdale Foal-\$5  
Western Ponies, no tack-\$5/each  
ASB Weanling, strange grey/pink hooves, lots of rubs-\$13  
Shetland Pony, missing half of rear leg-\$2  
Hartland half-rearing pinto-\$7  
Hartland 5" Arab Stallion-\$3

Willing to work out trades of the above for Breyer models I still need: old smoke Belgian (white m/t) in perfect condition; light palomino pinto Western Horse; seal brown Mule; solid black FAS; flocked bay PAS (blk m/t); buckskin Lady Phase w/pink nose; matte d.g. Running Mare & Foal (grey m/t); black Special Run PAM; d.g. LB Drafter; all three Special Run Hogs; woodgrain Clydesdale, Mustang, Shetland, Morgan, Fury and Belgian.

Also looking for horses by Metlox/Poppytrail, Mortons (these are really dorky looking, Border Fine Arts ponies, Beswicks, the Hartland QH family in bay and Arab family in buckskin.

NOTE: Does the person who offered a woodgrain Morgan with rubs in trade for the d.g. Clydesdale still want it? Please contact me so I know whether to keep holding it or not.

# LITTLE EAGLE SADDLERY

## your one stop - model tack shop

Celeste Blackmore Rt. 1 Box 4 W. Drexel, MO 64742 (513) 377-4572

Custom sizing on harnesses & leathers - State model - Your color choices: leather - black; dark brown; light brown; russet/tan; natural; red; white in some cases. Colored bands: red; blue; gold; silver; metallic orange. Nylon & braided items - any.

Many new items & prices cut on old reliables! Live show quality & proven! photos available - send SASE.

HA. TACK all w/matching lead & chain

Leather Stock - plain, buckles at both sides of poll \$5. w/silver plates \$7. w/braid \$8

Leather Stock - plain, 1 buckle, split throatstrap \$4. w/silver \$6. w/braid \$7

fully adjustable Stock - buckles everywhere \$6. w/silver \$8. w/braid \$7.

Nylon Stock - 1 buckle w/hook on throatstrap \$4.

Johnsons Rope \$3. Grooming \$2.

Light breed Show - plain leather \$5. w/colored bands \$6. w/silver ferrules \$8.

Arab Show Fine-noseband, crownpiece \$4. w/chain throatstrap \$5. w/bit \$6

Arab Show Beaded-leather headstall, chain throat, beaded nose \$7.

Native Arab Fine-braided w/tassels nose & crown \$7. w/throat \$8. w/tasselled brow \$10.

Native Arab Bridle - all the above w/bit & curb chain \$12.

Paso Fino Bella Forma w/lines (available in white, \$6.

Draft Halter - in white \$5. Draft Bridle w/reins \$6.

Figure 8 "Catch"-braided \$2.

Cattle Halter - leather \$5. Nylon \$4.

WESTERN

Saddles - all come w/white felt blanket. Round or square skirt - please specify.

All come w/matching breastcollar: thin show-round skirt; roping-square skirt.

Add: \$3. for double cinch, \$2. for suede seat, \$10 for Cheyenne roll in silver.

untooled \$25. Corner tooled \$35. Fully Tooled \$45.

Parade Saddle Set - black saddle w/tapaderos, breastcollar, flank drape, corona blanket, bridle \$75.

Parade Tail ribbons & roses - red/white \$3.50

Endurance Saddle \$20. Sidesaddle \$40. Aussie Stock w/horn \$50.

Bridles - all come w/clip bit & curb chain. Specify split; rommel; or roping reins.

Plain headstall - just the crown/cheek piece \$4. w/silver \$8. w/braid \$7.

Browband headstall - w/throatstrap \$6. w/silver \$10. w/braid \$7.

One Bar Slide - w/throatstrap \$5. w/silver \$9. w/braid \$6.

Cross-over brow - w/throatstrap \$6. w/silver \$10. w/braid \$7.

Basal Hackamore w/cross-over brow, mecate reins \$10. w/braid \$13.

Aussie Combo bridle \$10.

Braided Harper Reins - w/leather poppers, bit end knots \$10. mecate reins \$2.

Extra Curb Chain .50¢

Cattle event rope - waxed & wired to hold shape \$5. Free neck rope w/order.

Tie-down - cable or "old" rope noseband \$2.

Hobbles - leather \$4.

Hiata - braided \$5. Both required in w/r if using closed rein.

Thin Show Breastcollar \$3. Roping Breastcollar \$5.

Extra (long) uptugs for breastcollars .50¢ pair

Splint boots \$5. Skid Boots \$5.

ENGLISH

Saddles - all come w/white felt pad; leather girth.

Forward Seat w/knee rolls \$20. Cutback (SS/Park, \$20. Dressage \$20. (Proper for rasos,

Racing w/numbered blanket \$15. Sidesaddle \$40. Aussie w/out horn \$50.

Extra girth \$2. Extra Long Girth \$3. Girth extender \$1. Jump boots \$5.

Breastplate \$3. Hunt Breastcollar \$4. felt lined \$5.

MISCELLANEOUS MISCELLANEOUS MISCELLANEOUS MISCELLANEOUS

are looking for a great all-around club, then the NORTH AMERICAN MODEL SHOWERS ASSN. (NAMSA) is for you. Offers a large class list for beginners and seniors, and all breeds shown. For more info, send a large SASE to: Jean Derench, Box 466, Methuen, MA 01844

If you're reading the RAG, we KNOW you like an ALTERNATIVE. So we bet you'll LOVE the MOB. The Model 'Other' Club is THE most progressive & innovative club around, catering to 250+ rare or uncommonly shown breeds. Drop us a large SASE for the full scoop. MOB, 707 Rebecca, Sioux City, IA 51103

Model Showing - Now in its second year! Join the fun today at monthly point shows, benefits, year-end Nationals & awards. Watson-McCormick, 14606 SE 198th St., Reuton, WA 98148

THE CANADIAN MODEL CLUB AND REGISTRY PRESENTS

THE MODEL HORSE SHOWERS HANDBOOK

compiled, illustrated, and Edited by

MICHELLE GRANT

(Owner/Creator of Chinooks Breakaway, 1987 World Champion Model Show Horse - Las Vegas, Nevada)

All the basic information needed to help the new model horse shower, as well as tips for the experienced shower! Over 70 years of experience presented to you by the following authors:

- MARY ANN DALTON - Editor, Canadian Model Express; Vice-President, CMCR
- ANDREA DICK - Co-founder CME & CMCR; Fine Arts Degree
- MICHELLE GRANT - Fine Arts Diploma; R/R Artist
- BOBBIE MOSIMANN - President CMCR; Shows Live Horses
- CATHY VON MATT - Equine Studies Diploma; Editor of The Model Horseman

A VALUABLE INFORMATION SOURCE...

How to repaint and remake models; The different makes of models; Tack and its proper use; Live show tips; Holding a photo show; photographing your model; And more!...

OVER 30 PHOTOS!! FULLY ILLUSTRATED!!

CANADIANS: \$10 POST. PAID AMERICANS: \$12 POST PAID

NO CHEQUES! Money Orders Payable to Michelle Grant

For Your Copy Write to: MICHELLE GRANT  
416 Brookmere Cres. S.W. - DEPT. RAG  
Calgary, Alberta  
Canada T2W 2R3

IT IS READY!!!

The 1990 MS&CD (Model Showers & Collectors Directory) is finally done. I want to thank all of you who inquired about it & waited all this time.

The 1990 MS&CD is divided in five sections:

EASTERN-\$9.00 (Ct, De/DC, Fl, Ga, Me, Md, Ma, NH, NJ, NY, NC, Pa, RI, SC, Vt, Va & WV)

CENTRAL-\$8.00 (Al, Ar, Il, In, Ia, Ky, La, Mi, Mn, Ms, Mo, Oh, Tn & Wi)

WESTERN-\$8.00 (Ak, Az, Ca, Co, Hi, Id, Ks, Mt, Ne, Nv, NM, ND, Ok, Or, SD, Tx, Ut, Wa & Wy)

FOREIGN-\$5.00

CLUBS, PUBLICATIONS & SUPPLIERS-\$5.00

If you purchase the EASTERN, CENTRAL, WESTERN & CLUBS, PUBLICATIONS, SUPPLIERS sections, you will receive the FOREIGN section for free.

All prices include first class postage. Send orders to MS&CD c/o Lynn Marie Duffy-48 Dodd Street- Bloomfield, NJ 07003-4618



# SHOWTIME SHOWTIME SHOWTIME SHOWTIME SHOWTIME SHOWTIME

HALLIE HO FARM'S ALL-HALTER PHOTO SHOW. Original finish models only. July 24-28, 1990. New classlist. Low entry fee. Custom commercial ribbons 1-10 each class & gender champs/reserve. Rosettes to Grand & Reserve. SASE: Julie Wilkowski, 1845 Michelbook Lane, McMinnville, OR 97128-2419

The 1990 Shining Aspen Live Show says, 'THANKS' to our judges, entrants & prize donors for the BEST SHOW YET!! The two days flew by and were filled with fun, competition and friendship. Plan now to attend next year's show - watch for details in this space!! Daphne MacPherson, 5310 136th Pl S.W., Edmonds, WA 98020

## 1990 LIVE SHOW LISTING

JUNE 23-24 - WRC in Oakland, CA. SASE to: WRC/Laurie Jensen, 32891 Calle del Tesoro, San Juan Capistrano, CA 92675

JUNE 30 - Great Lakes Model Horse Association 10th Annual Live Show. SASE to: Cheryl Monroe, 4616 N. Ainger Rd, Charlotte, MI 48813

JULY 14 - 1990 HOLA, Napa, CA - Debbie Buckler

JULY 21-22 - Thunderbird International, Chilliwack, Canada.

AUGUST 11 - Calgary Connection Live Show. Send 50¢ for show package to: Mary Ann Dalton, 310-10 "A" St. NW - Dept TMR, Calgary, Alberta, Canada T2N 1W6

SEPTEMBER 1 - Southern California Live. LSASE with 45¢ postage to: SC Live, 3606 Texas Ave., Simi Valley, CA 93063

OCTOBER - California Live, show for customized (RRH) horses only. Contact Heather Wells for info.

OCT 13 - Fantasy Farm Fall Fling. Debra Carlson, PO Box 6529, St. Paul, MN 55106-0529

OCT 14 - National Draft Horse Show. Debra Carlson, PO Box 6529, St. Paul, MN 55106-0529

NOV 17 - Joan Berkwitz All Halter Show

DEC 15 - Christmas Party at Laurie Jensen's (Sell/Trade/Swap/Eat)

JAN 1991 - Second Annual South Coast Classic, Ventura, CA. Contact Darian Buckles, Bonnie Robb or Laurie Jensen for details.

## Southern Crystal Ranch Anniversary "Tons of Prizes" Halter Show September 14-20, 1990

- |                          |                             |                         |
|--------------------------|-----------------------------|-------------------------|
| 1. OF Stallion           | 17. OF Standing Showmanship | 33. Wild/Mule/Zebra     |
| 2. OF Mare               | 18. OF Action Showmanship   | 34. Other Purebred      |
| 3. OF Gelding            | 19. RR Standing Showmanship | 35. Mixed/Grade         |
| 4. OF Yearlings (1-3 yr) | 20. RR Action Showmanship   | 36. OF Breyer Trad.     |
| 5. OF Foal (Colt)        | 21. Arabians                | 37. OF Breyer Classic   |
| 6. OF Foal (Filly)       | 22. And/Lip/Paso            | 38. OF Breyer other     |
| 7. RR Stallion           | 23. Morgans                 | 39. OF Hartland         |
| 8. RR Mare               | 24. Appaloosas              | 40. OF Other Make       |
| 9. RR Gelding            | 25. Paint/Pinto             | 41. RR by Owner         |
| 10. RR Yearling (1-3 yr) | 26. Quarter Horses          | 42. RR by Other (state) |
| 11. RR Foal (Colt)       | 27. Warmblood               | 43. OF Current          |
| 12. RR Foal (Filly)      | 28. TB/Stb                  | 44. OF Discontinued     |
| 13. OF Senior Halter     | 29. ASB/TWH/NSH             | 45. OF Special Run      |
| 14. RR Senior Halter     | 30. Clydesdale              | 46. OF Custom Made      |
| 15. OF Novice Halter     | 31. Other Draft             | 47. OF Stable's Choice  |
| 16. RR Novice Halter     | 32. Pony                    | 48. RR Stable's Choice  |
|                          |                             | 49. Greg's Choice       |
|                          |                             | 50. Judge's Choice      |

Champs/Reserves: Stallion, Mare, Gelding, Yearling, Foal, OF, RR, Light Breed, Draft/Pony Breed, Stock Breed  
Rules: #13-14 2 or more years experience. #15-16 < 2 years. #17-20 require halter/bridle. #42 state remaker.  
#47-48 2 pix/class. Send LSASE for return of pix/results. **No postage dues!! Write showdate on envelope!!**

Ads: Full Page - \$2.00, 1/2 Page - \$1.00, 1/4 Page \$.50, classified (50 word max) - \$.25

Entry Fee: \$3.50/stable or \$1.00/horse. Sponsors are \$.25/class. All sponsors put into a special prize drawing.

Prizes: All entrants put into a drawing for lots of LSQ props and prizes, including a trail bridge, poles, halters, certificates, models, and more! Champs/Reserves receive stamps. Grand Chp gets \$5.00. Res. grand gets \$3.00.  
Send Entries to : Polly Fields, Rt. 2, Box 2872 Royston, Georgia 30662

PROJECT 88 BENEFIT SERIES

AMPCHA 2X MAHC 2X MESEA 2X MQHC&R 2X WMEA +10

Entry Fee \$1.00 LIMIT 10 PHOTOS Many Chp/Res named

This show is one of a group of four to be held by PROJECT 88 each month. See ARENA, AMHCD, THE HOBBY HORSE NEWS and MODEL HORSE RAG for other three shows' classlist or send a SASE to Mary Vandergrift, Rt. # Box 185 A, Mason, TN. 38049 for all four classlists.

A Prize drawing will be held to select the winner of a nice award from the names of all show entrants. Winner will be notified.

SHOW III: ALI HALTER

For list of Drawing Prizes, contact address above

CLASSLIST

- |                      |                              |   |
|----------------------|------------------------------|---|
| <u>POSE</u>          | <u>MOLD</u>                  |   |
| 1. OF Stand.         | 33. Breyer Trad.             | INTERMEDIATE -model by owner, does not offer RR services, or sell RRs.                    |
| 2. OF Walk/Trot      | 34. Breyer Clas.             | 52. Slight to mod. remake   |
| 3. OF Lope/Other     | 35. Breyer 1'Bit             | 53. Extreme rem/parts exchg.  |
| 4. OF Foal/Yrlng     | 36. Breyer Smate             | 54. Solid color repaint   |
| 5. RR Stand.         | 37. hartland                 | 55. App repaint   |
| 6. RR Walk/Trot      | 38. Hagen-Renaker            | 56. Paint/Pinto repaint   |
| 7. RR Lope/Other     | 39. Beswick                  | 57. Dap Grey/Roan repaint   |
| 8. RR Foal/Yrlng     | 40. Lefton                   | OPEN/PRO- models may be by other artist, models by owner who sells RRs or his RR sercies. |
| <u>BREED</u>         | 41. Other Manuf.             |   |
| 9. Arab              | 42. Orig. Sculpture          | 58. Slight to mod. remake   |
| 10. Morgan           | SHOWMANSHIP                  | 59. Extrme remake/parts exchg.  |
| 11. QH               | (photos by moderl owner)     | 60. Solid color repaint   |
| 12. App              | 43. OP                       | 61. App repaint   |
| 13. Paint            | 44. RR model by owner        | 62. Paint/Pinto repaint   |
| 14. Pinto(non stock) | 45. RR model by other        | 63. Dap Rey/Roan repaint  |
| 15. TB/Warmblood     | WORKMANSHIP                  |   |
| 16. Draft            | BEGINNER-model owner         |   |
| 17. Pony             | does not offer RR services   |   |
| 18. TWH/Fox Trotter  | or sell RRs.                 |   |
| 19. ASB/NSH          | 46. Slight to Mod. remake    |   |
| 20. Paso             | 47. Extreme rem/parts exchg. | RULES:  |
| 21. Other breeds     | 48. Solid Color repaint      | one class per horse per DI  |
| <u>COLOR</u>         | 49. App repaint              | No Halter is required.  |
| 22. Black            | 50. Paint/Pinto repaint      |   |
| 23. Bay/Brown        | 51. Dap. grey/Roan repaint   |   |
| 24. CH/Sorrel        |                              |   |
| 25. Buck/Dun/Pal     |                              |   |
| 26. Grey/Grulla/Roan |                              |   |
| 27. Tobiano          |                              |   |
| 28. Overo            |                              |   |
| 29. Tovero           |                              |   |
| 30. Blanket          |                              |   |
| 31. Leopard          |                              |   |
| 32. Other App.       |                              |   |

JUDGES AND SHOW DATES:

7/26: Mary Vandergrift

Rt. 2 Box 185 A,  
Mason, TN 38049

8/16: Cindy  
Derousseau, 916  
West Marshall St.,  
Rice Lake, WI 54868

9/13: Mindy Brown, 707 Rebecca, Souix City,  
Iowa 51103



SOUTHWIND FARMS' SPRING-INTO-SUMMER HALTER SHOW  
May 21-23, 1990

- |                    |                        |                                  |  |
|--------------------|------------------------|----------------------------------|--|
| 1. OF Stallions    | 14. Appaloosas         | 27. Other Color                  | FEE: \$3.00 & SASE with enuf postage for return of full results awards, & pix  |
| 2. RR Stallions    | 15. Paints             | 28. Original Finish              |  |
| 3. OF Mares        | 16. Ponies             | 29. Retouch                      | AWARDS: Comm. flats 1st thru 5th, small certificates 6th-10th, certifs & stamps to Ch/Res's, Spec. Run solid bay Running Mare to Grand, SR Act. Stk. Horse Foal(buck.) to Res. Grand (both come w/photos). |
| 4. RR Mares        | 17. Draft Horses       | 30. Rep. only                    |  |
| 5. OF Geldings     | 18. Mule/Donkeys       | 31. Rep/Hrd Only                 |  |
| 6. RR Geldings     | 19. Mixed/Other Breeds | 32. Rep/Rem/Hrd                  |  |
| 7. Open Yrlgs.     | 20. Bay                | 33. Breyer                       |  |
| 8. Open Foals u/1  | 21. Cht/Brn/Sor        | 34. H-R's                        |  |
| 9. Arabians        | 22. Black              | 35. Hartlands                    |  |
| 10. Quarter Horses | 23. Wh/Gr/Dap Gr.      | 36. Other Molds                  |  |
| 11. ASB/TWH/NSH    | 24. App. (Color)       | 37. Showmanship--<br>halter req. |  |
| 12. Morgans        | 25. Pa/Pi (Color)      |                                  |  |
| 13. TB/Warmbloods  | 26. Pal/Buck/Dun       |                                  |  |
- SEND ENTRIES TO: Tammy Fields, 1405 Samuels Loop, Cox's Creek, KY 40013

## ADIRONDACK STABLE'S

2nd Annual "END OF THE SUMMER PHOTO SHOW" SEPTEMBER 3-9, 1990

SEND ENTRIES TO: MARGARET SUCHOW, 30 BRAIM RD, GREENFIELD CENTER, N.Y. 12833

## RULES:

1. ENTRY FEE- \$4.00 unlimited, or .20 cents per HORSE PER CLASS.
2. SEND A LARGE SASE WITH ENOUGH POSTAGE FOR RETURN OF PHOTOS, RESULTS AND ANY RIBBONS WON. NO POSTAGE DUES!!!
3. FREE RESULTS TO ALL. ADS: .20¢ FOR CLASSIFIEDS, .25¢ FOR ¼ PAGE, .50¢ FOR ½ PAGE, AND \$1.00 FOR FULL PAGE.
4. PRIZES: COMMERCIAL RIBBONS 1-3, AND CLASSES PLACED THRU 10th WITH HM'S. GRAND CHAMPION WILL RECEIVE A TROPHY AND RESERVE CHAMP A COMMERCIAL ROSETTE (if enough entries)
5. I HAVE THE RIGHT TO SPLIT, COMBINE, OR CANCEL ANY CLASSES AND TO DISQUALIFY ANY MODEL NOT CONFORMING TO THE RULES.
6. ALL PERFORMANCE CLASSES REQUIRE PROPER TACK, PROPS, AND OBSTACLES. A HALTER OR BRIDLE IS REQUIRED IN SHOWMANSHIP CLASSES.
7. ALL ENTRIES DUE BY SEPTEMBER 1, 1990. LATE ENTRIES WILL BE RETURNED UNJUDGED.

- |                       |                                   |
|-----------------------|-----------------------------------|
| 1. OF STALLIONS       | 26. WEST. PL.                     |
| 2. RR STALLIONS       | 27. SADDLESEST/PARK               |
| 3. OF GELDINGS        | 28. ENG. TRAIL                    |
| 4. RR GELDINGS        | 29. WEST. TRAIL                   |
| 5. OF MARES           | 30. H/J                           |
| 6. RR MARES           | 31. X-COUNTRY                     |
| 7. OF FOALS/YEARLINGS | 32. DRESSAGE (state level & Move) |
| 8. RR FOALS/YEARLINGS | 33. PARADE/COSTUME                |
| 9. APPALOOSA          | 34. REINING                       |
| 10. ARAB              | 35. ROPING                        |
| 11. QH                | 36. BARRELS                       |
| 12. ASB/TWH           | 37. POLES                         |
| 13. TR/STBLOODS       | 38. OTHER PERFORMANCE             |
| 14. WARMBLOODS        | 39. DRAFT HARNESS                 |
| 15. PINTO/PAINT       | 40. LIGHT/PLEASURE HARNESS        |
| 16. PONY              | 41. BAY/BROWN                     |
| 17. DRAFT             | 42. BLACK                         |
| 18. MORGANS/MORABS    | 43. CHESTNUT/SORREL               |
| 19. LIP/PASO          | 44. GREY/DAPPLED                  |
| 20. OTHER PUREBREEDS  | 45. WHITE                         |
| 21. MIXED BREEDS      | 46. ROANS                         |
| 22. OF SHOWMANSHIP    | 47. PAL/DUN/BUCK                  |
| 23. RR SHOWMANSHIP    | 48. APPALOOSA                     |
| 24. BAREBACK          | 49. PINTO/PAINT                   |
| 25. ENG. PL.          | 50. OTHER COLOR                   |

!!!!!!PLEASE ENTER AND MAKE THIS SHOW A SUCCESS!!!!!!

## Silicon Valley Model Horse Ranch BAMHC Benefit Show

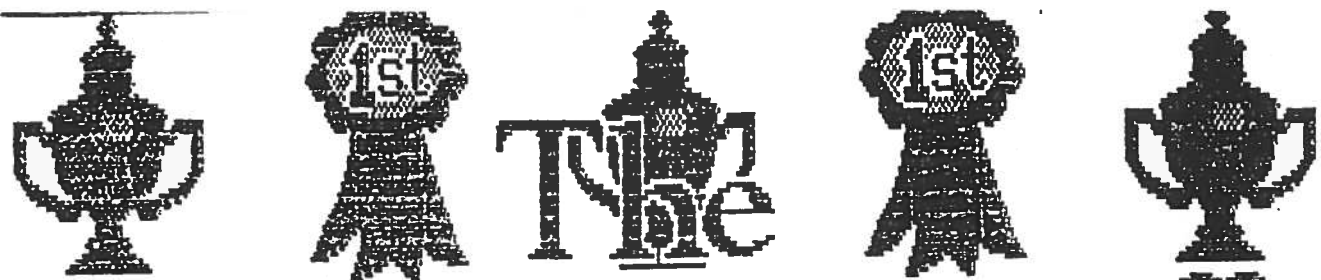
July 13-22, 1990

Silicon Valley Model Horse Ranch will be holding a show to benefit the year-end Bay Area Model Horse Club Show. Please enter.

### CLASSLIST:

- |                      |                         |                                  |
|----------------------|-------------------------|----------------------------------|
| 1. Stallion OF       | 18. Pony *              | 35. English Pleasure             |
| 2. Stallion RR       | 19. Morgan/Morab *      | 36. English Trail *              |
| 3. Mare OF           | 20. Other Pure *        | 37. Hunter/Jumper *              |
| 4. Mare RR           | 21. Mixed Bred *        | 38. Dressage *                   |
| 5. Gelding OF        | 22. Bay/Brown           | 39. Park/Saddleseat/Gaited       |
| 6. Gelding RR        | 23. Chestnut/Sorrel     | 40. Other English *              |
| 7. Foal/Yearling OF  | 24. Palo/Buckskin/Dun   | 41. Other Performance *          |
| 8. Foal/Yearling RR  | 25. Grey/White/Albino * | 42. Harness                      |
| 9. Showmanship *     | 26. Black/Charcoal      | 43. Versatility *                |
| 10. Arabian          | 27. Pinto Color         | 44. Costume                      |
| 11. Appaloosa        | 28. Appaloosa Color     | 45. Stable Choice *              |
| 12. Paint *          | 29. Other Color         | 46. Stable Mascot *              |
| 13. Quarter Horse    | 30. Western Pleasure    | 47. Studliest Stallion           |
| 14. TB/Warmblood *   | 31. Western Trail *     | 48. Most Feminine Mare           |
| 15. Gaited/ASB/TWH * | 32. Cutting/Roping *    | 49. Geekiest Gelding             |
| 16. Paso/Ando/Lip *  | 33. Gymkhana *          | 50. Cutest Foal                  |
| 17. Draft *          | 34. Other Western *     | 51. Judge's Choice (all entered) |

**Rules:** Unless stated otherwise, classes have a limit of ONE photo per horse. Horse can be entered in one gender, one breed and one color class. 9: Proper show halter with lead or bridle required for breed; 12: Must be of correct breeding (QH, TB, Point); 14-21: State breed; 20: Includes Mustang; Enter color breeds in "type" breed class, e.g. Palominos that are QH type should be entered in QH, color "cross" should be entered in type also; 25: Rose Grey is a grey variation; 31-33, 36, 37: Obstacles required; 34, 40: State, does not include other "levels" of classes listed, like "Novice Hunter"; 38: State level and movement; 41: E.g. Steeplechasing, Flat Racing, Eventing (for eventing include 3 photos, one each, of dressage, cross-country jumping, stadium jumping); 48: One halter & 3 performance photos required; 45, 46: One per stable; 47-50: Provide photo that shows off this quality best. **Show fee:** \$1.00/stable or \$0.10 per picture. Pictures returned immediately after judging if separate results SASE (\$.45 postage) provided. Maximum number of pictures is 50 per entrant. Photos ONLY entered in classes 47-50 do not count toward this total if entrant is paying full show fee. 1st-HM listed for each class. Grand/Reserve Champion Halter, Performance, OF, RRH. Certificates for champions. **Send entry to:** Gail Berg, P.O. Box 390010, Mountain View, CA 94039-0010. Include self-addressed envelope with sufficient postage to return photos. No postage dues accepted. Entries not received by 5 pm July 13, 1990 will be placed in classes not yet judged. Not responsible for cash sent through the mail.



HARTLANDS

are coming!!!

K.C. 6/9

Napa CA 7/14

All-Hartland

Live shows

FOR MORE INFORMATION, SEND SASE TO:

KANSAS CITY SHOW:
Tina English
RR #1 Box 325
Spring Hill, KS. 66083
1-913-884-7733

NAPA, CA. SHOW:
Debbie Buckler
1294 Hagen Rd.
Napa, CA. 94558
1-707-224-9506

# GAITWAY LIVE in st. charles

July 7 & 8

Hartland and Breyer  
Live Model Horse Show

Ribbons to 10th Place  
Rosettes

Grand Championship  
Money Classes

Paola Graeber's LAST live show  
lots of special goodies....

Contact: Dana Bennet  
15 San Carlos  
St. Charles, MO. 63303-4117  
(314)946-3734

# CHEAP THRILLS

Send submissions to: Gale Good, 1359 Sherrill, Anaheim, CA 92804

Denise Deen of Yucaipa, California says she usually doesn't find anything exciting but her luck seems to be changing. So far this year she's found an old mold bay PAF, a pinto Indian Pony with warpaint, a palomino 5-Gaiter, a seal brown Canterng Welsh Pony, a liver chestnut Scratching Foal, and a glossy "4-eyed" Misty. She also discovered a pearly palomino Rearing Stallion a couple of years ago and nearly passed him up because she didn't realize what he was. (Not many models came "pearled" so they are harder to find than chalkies--Gale.)

Sheryl Leisure, staunch model horse hunter, was rewarded recently with a walking polled hereford bull, a smooth-muscled glossy bay Clydesdale stallion, a gold buck and doe (I think her husband, Brad, found those), as well as two black bisque Hagen-Renaker Art Deco cats (these are so bizarre looking).

Chris Ertl has a great tale to tell. "I took my hubby and last \$10 (yes, we're rich, too) to a tack sale/swap for a local saddle club. Thanks to L. Rockmaker's ad for the HR draft colt being auctioned off or I would never have known my find. Two HR draft colts in excellent condition--one with slight crackling and one that's perfect--for a whopping \$3.00 apiece! Fortunately, I had shown Jim the ad, just to prove what models go for, and he was just as thrilled over the buy. We even took our last \$4 left over and celebrated with a copy of coffee. Now, that's excitement in Wisconsin!"

Heather Wells, tireless editor and searcher of new antiquities, had a fabulous (though not cheap) thrill when she purchased 10 Hagen-Renakers and a few assorted Japan models. The HRs included the DW Love, Crusader, Comanche, Butch, Two-Bits, QH foal in dun with no black, palomino Lippitt, and the mini Percheron, head-up standing palomino and Citation. The Japan models contained the Josef Original appy, palomino and a couple of older foals.

My finds weren't many but they made up for it in quality. There was another apply Western Prancer, a balking mule, the glossy bay QH Gelding, a white Poppytrail drafter with show harness (as opposed to the one with a work harness) and an old bay Hartland pony all in excellent condition. And last, but not least, another variation of the HR DW baby squirrels (the painters on these must have been given free rein to use their imaginations.)

Kim Fairbrother, who was featured in our last issue as the now proud owner of a Breyer Davy Crocket horse/rider with the original Breyer box, was kind enough to send me a photo of the box that

I could keep! Thank you, thank you, thank you. It doesn't reproduce well enough to put into the RAG so we'll tell you that on the side of the box is a "wonderful" blurb that reads: a colorful TOY...a COLLECTOR'S JOY...an authentic ROOM DECORATION for every GIRL and BOY. (Isn't that special.)

PLEASE NOTE: I'm still receiving missives saying that I have not printed their "Cheap Thrills". Please be sure you send them to ME and not Heather or Kay. If two issues go by and you still don't see it, please write me again. Mail has been known to sit in our Post Office for weeks or even disappear completely!

#### COLLECTOR'S NEWS

Unfortunately, a local U.S. Beswick Club looks like it would involve a lot of work (registration, shows, points) and I simply don't have the time. We're thinking of having a Beswick page/column where one or two molds might be featured per issue and where information from England is passed on to you. For instance, some of you already know that Royal Doulton, the parent company who owns Beswick, has decided to discontinue quite a few of the horse pieces and issue the remaining ones with a Royal Doulton backstamp instead of the Beswick one. Whether there will be new pieces added to the line has not yet been announced.

What does this mean to the collector? It means the horses (and other pieces) will be harder to find and higher in price depending on the number of years a particular mold was in production. Some collectors will prefer those pieces with the Beswick backstamp over the Royal Doulton just like some prefer Monrovia Hagen-Renakers to those of San Dimas or San Marcos. However, unless there is a significant difference in the detailing of the paint job, I'm not going to feel compelled to have two identical mold/colors just because one says Beswick and the other Royal Doulton.

Besides the Beswick Collector's Guide by Harvey May, there is a Beswick Price Guide by the same author which gives estimated price ranges (in pounds) of various Beswick pieces. Written in 1988, it reflects the current production line at that time. Current pieces have RFP written in the price column with no explanation anywhere in the book as to what this means. It probably means to check the current rate but doesn't state what those rates were. A shame since so many of those "current" pieces have been discontinued and there's no way to guess at its worth unless you knew what it sold for originally and added a little to that to reflect the increase in value. This price guide is not easily found in the States and apparently there is no plans to reprint either the Collector's Guide or the Price Guide. It does help the collector determine the value of their models. Heard one person say the old Bessie Zebra was worth \$300 but found the price guide valued it at just over half that!



## Guide to Racing Your Model Horse

BY SHERRIE KIDDER

Model horse racing may seem like an elite thing to most showmen. Perhaps something only open to a certain few who are "in" on it or who follow real horse racing closely. But this is not really the case. It is true, however, that any person who is interested in model horse racing really needs to have some info on the subject to get started. Hopefully, this guide will help you to get involved and help give you the "insight" you need to be a successful model horse racing enthusiast.

First off, you need a model. The only horse breeds that race in real life are Thoroughbreds, Quarter Horses, Standardbreds (Trotters & Pacers), Appaloosas, Paints, and Arabians. Make sure that the model you use to represent your horse is an adequate example of the breed you chose. In other words, if Blackie is supposed to be a Thoroughbred, the model should look like a Thoroughbred, not a Shetland or a Clydesdale.

In the real world, horses also age, so it is best to have your horses "age". A good system to use is that all horses have a birthday on January 1st of every year. Even if foals are born at different times, this date is used to eliminate confusion. For example, Blackie was born on April 8th of 1989. When January 1st of 1990 rolls around, Blackie will only be one year old although chronologically he will only be 8 months old.

Most horses in the real world (Thoroughbred at least) don't start racing until around May of their second year. They will usually race for 2 to 6 years before retiring. Mares will usually race the least (about 2 to 3 years), stallions for 2 to 5 years, and geldings may race for up to about 6 years. Few horses race for more than 6 years since the racing and training causes stress to the legs of the horses which accumulates to a point where the horse can no longer race without risking a major injury. Some breeds however will race much longer than others. Standardbreds for instance may race for as much as 14 years without injury. This is due to the fact that Standardbreds never race with a rider or weight on their backs, thus less stress to the legs.

Getting back to the story now, you should have your model and have given it a name, specified it's breed and sex, and decided it's age. The next thing to do is set up your racing cards. These cards are your means of entering your horse in a race. They list information about the horse for the race holder to read and use. Different people ask for different information, but as a general rule, this is what your card should list: the horse's name, age, breed, sex, color, past performance, and your name and address. Other things you can list on your card are: sire, dam, dam's sire, jockey, trainer, breeder, running style, surface preferences, distance preference, and achievements of the horse's sire and dam.

Past performance is a breakdown of how the horse has done in previous races and usually looks like this: 12 sts. (4-1-3-0) \$230,458. What this says is that the horse has started in 12 races, has won 4 of those races, come in second (or "placed") in 1 race, come in third (or "shown") in 3 races and has not come in 4th in any of its races. This also lists the amount of purse money (not real of course) the horse has won. In listing past performances, a 5th place finish or less is not mentioned. Past performance can also be a listing (usually on the back of the card) detailing the individual races the horse has run in. A detail can look like this:

2nd-Allowance, 5f T, firm, 4e, 116, 3/26/89 "From behind, well rated, missed by hd."

Translation: Finished second in an Allowance race (explained later). The race was at a distance of 5 furlongs (a little more than 1/2 mile) and it was on turf. The turf condition was firm (the best possible condition for a turf track). There were 4 horse total entered in the race and this horse carried 116 lbs. The date of the race is listed and a brief description of how the horse ran is usually included (hd is the abbreviation for "head").

Sire, dam, and Dam's sire is pretty self explanatory, and jockey, trainer, and breeder are much the same. The jockey is usually a friend or family member or simply a made-up name, never use your own name. Trainer, however, can be yourself, a friend, a family member or again a made up name. **Never use a real trainer or jockey's name!!!** The breeder is the name of the person of establishment where the mare that gave birth to the horse lives. For instance, a horse that was born at say Claiborne Farms in Kentucky, was bred by Claiborne farms and that is what is listed on the card.

Running style, surface and distance preferences are much more complicated. The running style is how the horse will usually run a race. Since model horses cannot run much less move, this takes a bit of imagination. Most horses will run "one the lead", "near the lead", "mid-pack", "off the lead", or "way off the lead". Generally, a horse that is starting out for the first few times has no "known" style or preference. A good idea is to list "unknown" as your horse's style and preferences for the first few races until a trend develops. In other words, if your horse usually races up front, that is the running style. If the horse wins at a certain distance several times

after having failed at other distances then that winning distance is preferred by the horse. Same goes for track surfaces. Some horses prefer fast dirt tracks, other muddy tracks, other turf tracks. Most horses prefer fast dirt tracks, but others prefer turf tracks or even muddy tracks. These preferences should come out the more you race your horse.

The achievements of the horse's sire and dam are not always looked at, but are sometimes useful for horses that are just starting out. This should list the sire's and dam's race record and, if you want to and have room, the produce record. The race record is just like that for your horse listing starts, wins, places, etc. The produce record is the number of starters and the number of stakes winners, multi-stakes winners, and other successful foals. This will often look like this: 12 strs, 1 wnr, 4 SWs, 2 MSWs, 1 MSW/CH/HOTY (PRINCE CHARMING).

Translation: 12 starters, 1 horse who has won at least one race but no stakes races, 4 stakes winners, 2 multi-stakes winners, 1 multi-stakes winner/champion/Horse of the Year whose name is Prince Charming.

Now, I have explained setting up your card, here's some information that will help you to decipher some of the more complicated things. The condition of the track the horses race on varies. There are two types of track, dirt and turf (grass). A dirt track can be "fast", "good", "slow", "muddy", "sloppy", or "heavy". A fast track is a track that is in perfect condition and enables the horses to race their fastest without being hindered by the track itself. A good track is similar but not quite perfect. It might be too deep or too hard, or any number of different minor problems. A slow track is a track that is perhaps slightly damp, it hinders the horse somewhat. A muddy track is exactly that, usually created by a fresh rain. It's the kind of race where all the horses and jockeys come back a uniform shade of brown. A sloppy track is usually created by a heavy downpour and is differentiated from being just muddy by standing water on the track. This is the most dangerous of the dirt tracks since it is quite slippery. A heavy track is the kind of track where the dirt has just begun to dry and tend to pack and clump around the horses' feet. This kind of track usually occurs sometime after a rainfall. On a turf track, the grass can be "firm", "soft", "hard", or "wet". The firm track is the best. A soft track is one where the grass is perhaps a bit deep while the hard track is usually too thin. A wet track is of course just that, wet. But it also means that the track is somewhat slippery and horses are prone to many more injuries while on this kind of surface.

Well, now that you understand how to set up your cards, you need to find a place to race your horses. Several clubs exist that are devoted to model horse racing, some more realistic (i.e. complicated) than others. There are also individuals around that advertise races in some of the showing magazines. A letter and a SASE to one of these people will generally get you a racelist.

Once you have found a place to race your horses, you need to sit down and figure out what kind of a race to put your horse into. There are about seven kinds of races around: Maiden, Allowance, Ungraded Stakes, Grade III Stakes, Grade II Stakes, Grade I Stakes, and steeplechase. Maiden races are for those horses who have never won a race before. Allowance races are for those horses who have won at least one race. However, some people let maiden horses enter the allowance races, it depends. Ungraded Stakes races are simply named races. These are the most common of stakes races and are good for those horses who have never raced in a stakes race before since the competition is not usually stiff. Grade III Stakes races are the next step up, both in purse amount and in competition. Grade II is again the next step up and Grade I is the last step. Grade I stakes races are the toughest and the richest with purses varying from \$100,000 to \$1,000,000. An example of a real Grade I stakes race is the Kentucky Derby. The last type of race is a steeplechase race. These are usually much longer than so-called flat races and are over jumps. Steeplechase races can be Maiden, Allowance, or any stake grade. The best idea when starting a model racehorse is to start at the bottom of the ladder and work the way up. However, some people don't wish to do that and may start at the top of the ladder and stay there. It all depends on what you feel is best.

Another hint that is useful, try not to "over race" your horses. Some race stewards will watch for horses who have been racing too frequently and will penalize those horses. A safe rule is that a horse can race up to twice a month but once a month is best. And give your horse a month vacation now and again. Sometimes, believe it or not, that can help turn a horse around from a losing streak. Try to think realistically, but don't let realism start to get in the way. Model horse racing can be a fun sport, just go with the flow and don't get carried away.

### An Example of a Racing Card

**Blackie** Race Entered: #5  
 1985 blk. TB c. (Black Knight x Darling Dear, Dapper Dan)  
 Jockey: Joe Blow Trainer: June Bloom  
5 sts. (2-1-0-1) Earnings: \$127,231  
 Distances: seems to prefer about 1 mile.  
 Style: usually goes w-t-w or sets the pace.  
 Surfaces: Loves turf but does well on dirt.  
 Status: Allowance O/B Jane Doe  
 Bred by Juniper Hills Ranch(KY) 111 Anywhere St.  
 Reg. # Z-99999 Anytown, OH 66401

Front →

Comments: Blackie has been given a bit of a rest lately so he's very ready for this race. He will wear a hood for this race.

Sire- 19 sts (7-3-5-4) \$461,160 MSW  
 Dam- Unraced, dam of 6 str., 1 wnr, 2 SW, 3 MSW

Race Record:  
 2nd-Maiden, 5f T, firm, 3e, 116, 8/16/87 "almost w-t-w"  
 1st-Maiden, 1m T, firm, 4e, 115, 10/3/87 "w-t-w easily" T=1:37.2  
1987-2 sts. (1-1-0-0) \$23,540  
 4th-Allow., 1-1/4m, fast, 6e, 118, 3/21/88 "Set pace, faded"  
 1st-Allow., 1m T, firm, 4e, 117, 5/8/88 "w-t-w ridden out" T=1:46.8  
 5th-Godzilla S., 1-1/2m, fast, 5e, 122, 7/12/88 "Set pace, tired"

Back →

The number of the race entered, the past performance records (including Earnings), and the status should all be written in pencil so that they can be changed frequently whenever new results come back. Also understand that this is just one way of organizing your cards. There are many others that are just as good if not better.

## Typical Abbreviations Used in Model Horse Racing

- AP-----Appaloosa
- AR-----Arabian
- c.-----colt
- Cl.-----Classic (a type of stakes race like "Arlington Classic")
- D.-----Derby (another type of stakes race)
- ETW-----Equald top weight (carried the most weight in the field along with one or two other horses.
- f.-----Furlong or Filly (depend upon context)
- fur.-----Furlong
- h.-----horse (a male horse 5 years old or older)
- H.-----Handicap (type of stakes race)
- hd.-----Head (in other words, beat the next horse by a head)
- HOTY-----Horse of the Year
- len.-----length (the distance of one horse from the chest to the rump)
- m.-----mare (5 years or older)
- MSW-----Multi-stakes winner (has won more than one stakes race)
- nk-----neck
- no-----nose
- NW-----non-winner (in other words, a maiden)
- PA-----Paint
- PT-----Paint
- QH-----Quarter Horse.
- s.-----stallion
- S.-----Stakes
- SP-----Standardbred Pacer (rarely used since it can also mean "stakes placed"
- SPW-----stakes placed winner (came in second or third in a stakes race and has won at least one other race)
- ST-----Standardbred Trotter (rarely used)
- STB-----Standardbred
- STB-P-----Standardbred Pacer
- STB-T-----Standardbred Trotter
- SW-----Stakes winner
- T-----Time
- TB-----Thoroughbred
- TW-----Top weight (carried the most weight in the race)
- WNR-----Winner (has won at least one race)
- 2YO-----a two-year-old horse
- 3YO-----a three-year-old horse
- 4YO-----a four-year-old horse

## Distance Equivalences

1 furlong	-----	1/8 mile	-----	220 yards
2 furlongs	-----	1/4 mile	-----	440 yards
3 furlongs	-----	3/8 mile	-----	660 yards
4 furlongs	-----	1/2 mile	-----	880 yards
5 furlongs	-----	5/8 mile	-----	1100 yards
6 furlongs	-----	3/4 mile	-----	1320 yards
7 furlongs	-----	7/8 mile	-----	1540 yards
8 furlongs	-----	1 mile	-----	1760 yards

# DRIVEL DRIVEL DRIVEL DRIVEL DRIVEL DRIVEL DRIVEL DRIVEL DRIVEL

(With added editorial comments by Kay...Hee!)

Hiya hiya hiya! Time once again for another chapter (episode?) (*Kay here - seizure?*) of "As the Drivel Churns..." **READY? HERE GOES NOTHING:**

Got some positive feedback re: The Wiener Wagon. Seems I dredged up all kinds of nostalgic feelings in ya'll (*I know I found myself reaching for the old Kingsford briquettes...*) I should find out where it's kept and see if they'll let me pose with it in a photo. Stay tuned for THAT pic (*Same Drivel-time, same Drivel-channel*).

ACK! I just went to pour myself a small glass of white Grenache (*you trendy thing, you!*) and the CORK BROKE OFF! Had to try all kinds of tricks to get that stupid thing out of there! It was like a cartoon, I bet. Me gnawing on the bottle. (*Yeah, just like something you'd find in a Peanuts' strip - Snoopy suffering DT's while Charlie Brown desperately searches for a corkscrew...*) But I finally got it open. Back to the Drivel! (*You realize, of course, that if she didn't get the cork out, this column would have ended real soon. For some strange reason, Laurie seems to need some additional fortification before she can open her Drivel mail. I don't know why...*)

Sandy Tomezik sent a wonderful poem that she wrote herself! (*She admitted this without duress?*) She's such a talented person! Here it is:

## MY TREASURE By Sandy Tomezik

Mt horse is such a treasure  
My horse is such a prize  
She's just the wonderfulest thing  
You'll scarce believe your eyes.  
I know my list said she was twelve,  
But she's really worth much more  
I've decided I couldn't part with her  
For less than twenty-four.

The more I think about it  
The rarer she becomes  
I never saw one quite this shade  
I really couldn't sell her  
Maybe we could trade?

I'd take two discontinueds  
Maybe even four  
If you throw in a few test runs  
To even up the score

Give me a Froelich remake  
A Rio Rondo too  
No, even with two Diamonds  
It will never do  
I just grossly underpriced her  
I must've had the flu!

Thought you'd fooled me, didn't you?  
I was smarter than you thought  
I raised the price when you'd believed  
You'd had a bargain bought  
No, all the tea in China  
Won't make me sell her now  
I know how rare a thing she is  
I'm just a model dealing whiz!  
And if there's ever another  
That you think you might want  
I'll know I have a treasure there  
Just like this Family Arab Mare.

Thanks, Sandy! More poems wanted! Any drivel or model horse subject! (*Be careful what you wish for...*)

On a serious note: Tammy Wong sent several brochures regarding People for the Ethical Treatment of Animals (PETA). Now I make all kinds of jokes regarding stuffed (taxidermy-stuffed, I mean) (*real, live, dead, etc...*) animals and slugs and everything else. But I would NEVER advocate or condone cruelty to animals! Ask Kay or Sarah or Darian or Heather or anyone who knows me and they'll come up with all kinds of stories of how I raise baby caterpillars on my kitchen's acoustic ceiling (anyone else would vacuum them up) (*I'd often wondered what that different taste was in your food...*) and how I take spiders outside instead of squishing them (*Of course, they often return the favor...*) I talk like I don't care about animals but I love them (with the exception of fleas, ticks and bedbugs, which I will NOT love, no matter what!! So there!!!) Anyway, if you want more info on PETA, send a SASE to: PETA, Box 42516, Washington, D.C. 20015-0516

Ah, the joys of parenthood. Those of you who have children-type-persons (*would that include Labradors?*) living in the same place you live will know:

1. How hard it is to keep the toilet paper **ON THE ROLL** (as opposed to: **ON THE FLOOR IN A BIG PILE, IN THE TOILET IN A BIG WAD, OR THROUGH THE HOUSE LEAVING A BIG MESS!**) I buy those huge industrial sized packages of T.P. at The Price Club and I still end up wiping with a page out of Mechanics Illustrated before the week is out!! I've gotten so I **HOARD** my own **PERSONAL** roll of toilet paper in each bathroom. *(You selfish wench, you!)*
2. "Merryl's Law of Inversely Proportional Nutrition." This law states that the nutritional value of any food item offered is inversely proportional to the volume of that particular food item the child will actually ingest! Sometimes I give in and she lives on chocolate milk, popsicles, M&M's and multi-colored marshmallows. O.K., O.K. So I'm a bad mom. Sue me.
3. "Lloyd's Law of Diaper Dynamics." This law states that the chances of a major lower G.I. tract event is directly proportional to the inaccessibility of a clean diaper and/or are to change it without gagging people as they walk by. Added intrigue is involved when at a major wedding or expensive restaurant. *(Wait a minute...a MAJOR wedding? Is that as opposed to a MINOR wedding? What are the variables here: number of bridesmaids, food service at reception (cake, buffet, or sit-down), or whether or not the bride and groom grind cake into each other's face? Maybe we can get a reading on this in the next issue...)* Boy, the looks people give you as you try to exit gracefully. Upon departure from the social event, Merryl helps by interjecting, "That baby **SMELLS!**" So much for decorum. *(And last issue, she had the nerve to ask when I was going to have children. HA!)*

So much for parenting. Incidentally, I'm taking a class on "How to Parent." My husband bought it for me for Mothers' Day (he paid the tuition). So far, it has really helped. (Helped me to see just how horrible a parent I am...) Oh well. I try my best. It's not every mom who allows her child's pillbug collection into her bed. (The more, the merrier, I always say.)

Well, I can always get a new job. People keep sending me clippings from the classifieds, for interesting job opportunities:

#### CRAB OBSERVERS

"We will train biological observers. Prefer exp. at sea. No seasickness...Bring/mail resume..."

What job experience do they want, do you suppose? *(Well, they don't say that it is JOB experience! Also, they don't say what you will be observing the crabs doing...Hmmm...)*

Also got an article on "The Ketchikan Slug Race." According to the clipping, there is a big gastropod race that is held in conjunction with the Blueberry Festival. *(Wait, wait...let's just pause here and savor the visual image...)* In this particular racemeet, a slug named "Speedy" slimed his way to victory. Meanwhile, you could also enter "Dr. Woody's Owner and Pet Look Alike Contest." I think Kay should enter with one of her pets. How about it, Kay? *(I resemble that remark. But seriously folks, I entered the contest with Dr. Woody...)*

Cathy von Matt sent these sniglets at least a year ago...I finally dredged them up...(yay!)

**AIRPUT** - Any of a series of kicks that advances one's baggage toward the airport counter.

**IDIOLLOCATION** - The spot on the shopping mall map marked "You are here." (Often where you'll see Elvis and Misty.) (Hey Kay! What ever happened to the Padded Pony Perusal expose you promised many issues ago?) *(Thanks, L. The day we went to go see the Wooden Wonder, they were (alas) closed. Besides, I think that the stellar story sent in by the Liz/Paula/Judy gang really about summed it up. But if you're really desperate, I could always go snap some pics of the two meaty mini mares up in yonder pasture, but of course, they're not dead yet - they can still manage a pretty good impression of living beings when they hear the jingle jangle of a bridle approaching.)*

**ILLUMINOT** - Device in airplane bathrooms that won't let the light come on until you lock the door.

And speaking of slugs, Mindy B. sent this photo (see next page) and Lea D. sent this ad for a Skunk Family Lawn Decoration (also see next page)

Thanks, I think, Mindy and Lea!

And speaking of slugs, *(Now, now, I know what you're thinking. But remember where you are: if it's Drivel, we must have been speaking of slugs.)* here is a photo of "Giant Northwest Slug A.K.A. Jabba"

Chris E. sent a fascinating article on "Creeping Creek Foam." Seems the Schaubles' of Cedarburg have a huge, advancing **WALL OF BUBBLY FROTH** within 10 feet of their home. According to the clipping: "the Department of Natural Resources said it was a natural phenomenon, most likely



caused by a combination of decomposing organic matter, heavy rains, and moderate temperatures." YUM! Kay! Any advancing walls of foam around your house? (You mean aside from the two black Labs...well, at a quick glance I'd have to say no. There is a baby bunny rabbit sitting on my garden steps, but he doesn't appear to be foaming...yet.)

And speaking of slugs (Remember...) I am not only the proud owner of a wonderful slug original sculpture (a great gift!) by Judy Renee Pope, but I now own the fantastic PUNK FROG by the same talented artist (with help from Liz B. and Paula O'K? Yes?) Anyhow, me hopes that Kay F. (as opposed to any other Kay who might be editing this mag) will include his glorious photo SOMEWHERE in this Rag! Yes? No? (I promise that it is prominently displayed...)

And speaking of crabs (O.K., I know it's not quite the same as when we weren't speaking of slugs, but try to be flexible and stick with the program...) I need to mention that ANY and ALL Disney Little Mermaid goodies should be sent directly to ME! Yes, I am a Little Mermaniac! I got the video 3 days ago and it's already showing serious signs of wear! (Well, so do most PEOPLE who have been exposed to you for three days...) Typical conversation around here:

ME: "Under da sea, under da sea..."  
 MERRYL: "Mommy, can we watch something else?"  
 ME: "What do they got...a lot of SAND? We've got a hot crustacean band..."  
 MERRYL: "Mommy - I'm tired of The Little Mermaid..."  
 ME: "Les poissons, les poissons, HEE HEE HEE, HAUW, HAUW, HAUW!!!"  
 MERRYL: "I'm going to go play in the street."  
 ME: "Quiet! This is my favorite part!"

**SKUNK FAMILY**  
**Parade Across Your Yard!**

- Attached Ground Stakes
- Lifesized

They look so real! Watch neighbors and visitors run for cover when they first spot this lifesized Skunk Family on your lawn. Just press into ground and delight all who pass by. Momma stands alone and measures 16 1/2" long. The little ones are 13 1/2" long. Each piece is cut from an exterior grade sheet of hi-impact materials. They're painted black and white — won't fade, chip or peel.

No. 8184 — Skunk Family ..... \$4.99  
 Special: Two Set \$9 — Three \$12



"Jabba the Hut, who looks like a 6,000-pound intestinal parasite."  
 ---Dave Barry

9013. GIANT NORTHWEST SLUG. A.K.A. JABBA. This ugly fellow was a star in Star Wars some years ago. He is 4-1/2" tall, 9-1/2" long, the arms move and if you twist the last 4 inches of his tail, his head turns. The color is an awful greenish ochre. A true couch potato that some locals claim looks just like some slugs they've found around here. \$2.95 each.

PEOPLE, PLACES & THINGS PEOPLE, PLACES & THINGS

HEY!!!!!!(That's Californian for "Listen to what I have to say.") BUYER BEWARE.....we are having a rash of FAKE Breyers....again!! Request past history on any model that you find questionable.....ask other collectors about any doubts you may have.....check around!!!! Enough said!

Hope everyone has a real good time at BreyerFest in July. Kentucky Horse Park looks to be a fun park with lots of interesting sites. Now, we don't want to be hearing of any of our readers being thrown in the rock pile because of deals in the parking lot!! And no running around trying to buy those Decorator Mistys' from the raffle winners! We will have our spies out there and they will be reporting back to us all kinds of juicy tidbits!!!! Stay tuned!!!!

Congrats to Paola Groeber on her new position with a new company.....we will most definitely miss the complete line of Hartland Collectables you origiated over these past few years. We do look forward to the line of Hartlands that you will be producing in the near future. Keep up the good work.....we know our readers will be behind you!!

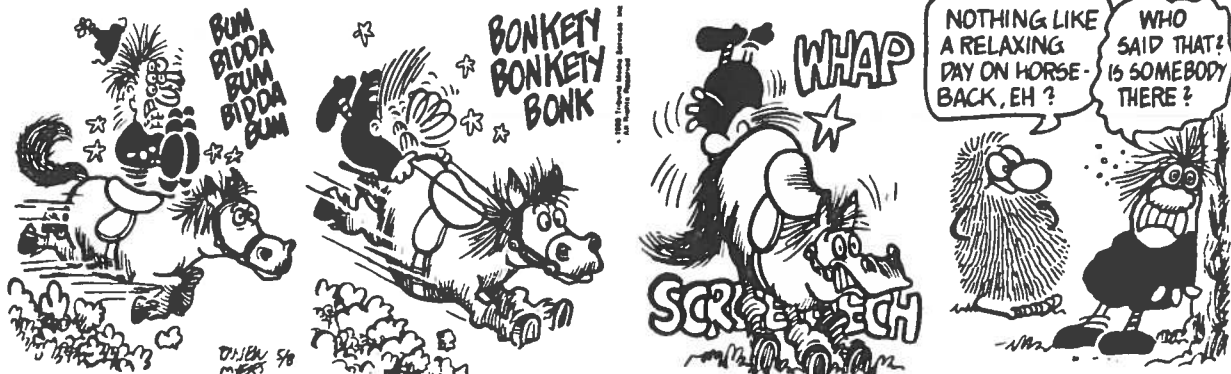
Oh....saw the note Kay left me about THE CONTEST....those artisans who would like to participate in this worthy meeting of the minds.....Black Horse Ranch offers direct to you:

- #426-Prancing Arabian Mare(Lady R).....\$12.00
- #460-Khemosabi.....\$16.00
- #450-Rugged Lark.....\$13.00
- #813-TB Mare (T.O.C.).....\$14.00

Mark the order..T.M.R./HSO Contest and BHR will pay shipping charges, one model per contestant. Send orders to BHR Shadow Hills address.....so come on.....get those dremels out and start cutting up those puppies....thats the only satisfaction you may get!!!!

Show season is in full swing, hope everyone gets a chance to get out. Looking forward to all the shows we will be having here in California (hint, hint Kay!) and all the lucrative swap meets here (shove, shove....)....it's SUMMERTIME!!!

Saw some model horses in tv and ads lately..a Beswick in the Hoover vacuum ad....magazine ads.....a Breyer Buffalo in the comedian's act on Showtime.....





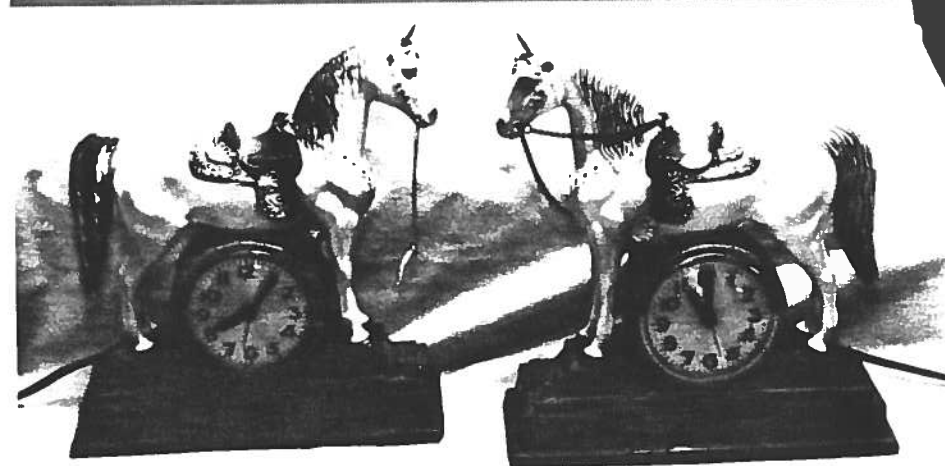


FINALLY A PHOTO.....

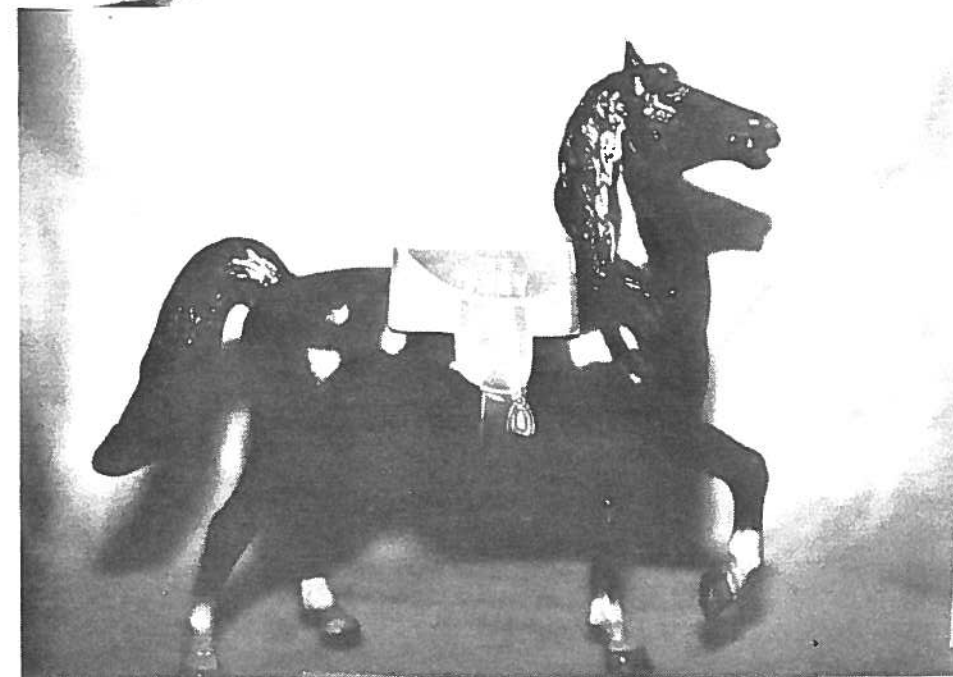
It's been awhile..so here are some photo's we thought you might enjoy!

Breyer Proud Arab Mare Woodgrain with gold foil sticker....  
..o/b Kim Jones

Breyer and Hartland Horse clocks...as you can tell..both use the Western Horse... Hartland made the clock first..did not keep the mold...then Breyer made the mold but kept them in lieu of payment....  
..o/b Heather Wells



Breyer Fury with paper saddle...hard to find with the paper saddle.... writing on saddle sez TV's FURY....  
..painted on white markings, no reins..  
..o/b Heather Wells



Hope to have this column again in the next issue with some models that are harder to find.....

LITTERBOX LITTERBOX LITTERBOX LITTERBOX LITTERBOX LITTERBOX

Not much to go on about.....send me anything you hear and I'll try to confirm it and PRINT it!

Breyer just sent out partial shipment on the new Roemer model just to quench everyone's thirst.....why can't they just fill the mail order houses first, then the toy/department stores? Guess they can't..might show that they actually are doing a little something for the collector! Enough of that! Roemer does look good..has his common Breyer faults..but the position is great! How can we convince Breyer to try one of the many talented collectors available in this hobby?

Black Horse Ranch is the second mail order house to get a special run from Hartland Collectables..Your Horse Source was the first, but unlike YHS all of BHR's run was painted by HC, hand painted to resemble Karen's real filly...Dun In Dreams. Dun colored 11" Quarter Horse (LOVE that mold!) with a white blaze and one hind white sock.

Haven't heard if any of the mail order houses received the over - stock from Penneys.....the Warmblood horses...did hear rumor that they were going to be available in the 1990 Christmas book. We'll keep you all posted.

Just went to the Hallmark shop.....guess what folks?...the Christmas ornaments are IN! Go and get them! That also goes for the Fall line of Hagen-Renakers...aren't they suppose to be out in July too? Look for the catalog Christmas books to be released in a couple of months too!

Flipping the channels on the telly....saw a Mickey Rooney interview...he's about to lens a series for the Family Channel about the Black Stallion! Twenty episodes in Canada and six in France, with more inked for next year! And to top that...Mickey turns 70 this year!!!!

Hope everyone has a super time at BreyerFest....write me (Heather) and tell me how it went....send me those Litterbox items too!!!!

Gold Secretariats are out now....the signing parties have begun!!!!Contact any store that will be holding a signing party or write to the mail order houses for details. Not really the "old" Decorator type but its not all that bad...kinda grows on you, if you know what I mean!!!

Hope everyone has a safe fourth of July.....attend and support all the models shows you can....that's what keeps the hobby going.....Happy Showing!