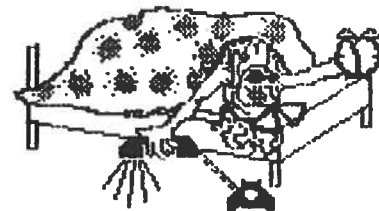


The

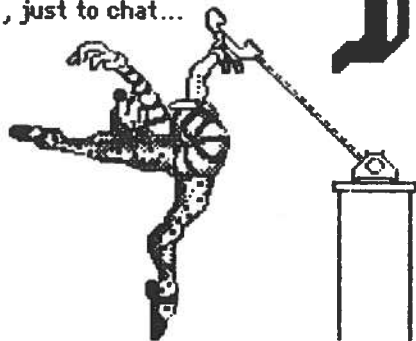
Kay, delighted at the prospect of gabbing with Laurie, quickly calculates the number of sleeping hours left, and ponders the delicate question: "Is it possible to murder someone through an U.S. Sprint fiber-optic cable?"

Laurie, immune to the effects of things like TIME ZONE differences and BEDTIMES, rings up her old pal, Kay, just to chat...

Model



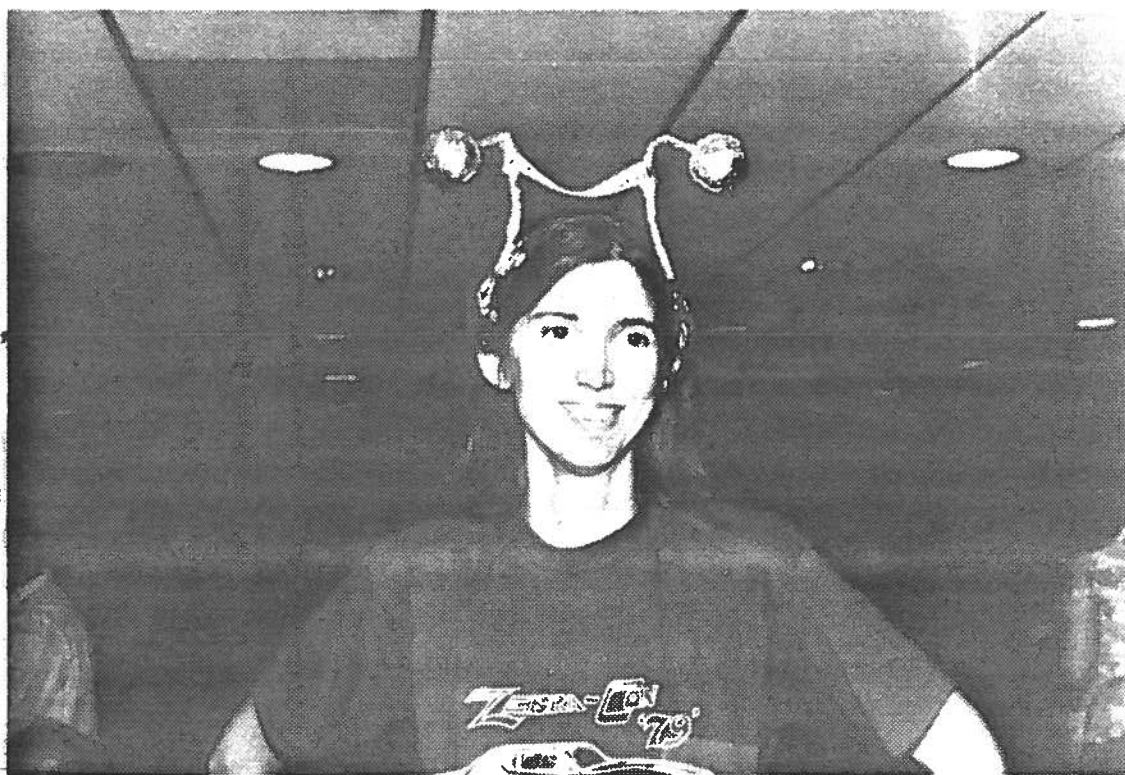
Rag



Volume 3, Number 1 Circulation: 165 Single Issue: \$3.25 February, 1989

Who is this woman, and why is she on the cover??

It is Linda Walter, Patron Saint of model horse magazine editors!



For you not-so-old-time collectors, Linda published the Model Horse Shows Journal for 10 years until 1979/80 - 50 pages monthly, crammed full of goodies...

Inside this issue.....

New H-R models (yes, including horses!).....A glossary of Drivel terms.....More weird pets and toys (how about "weird pet-toys?")Plus...We give our readers a chance to VOTE!



THE MODEL RAG INFORMATION



Our Format:

The Model Rag is divided into several sections to allow you to more easily find the things that you are most interested in. We have separate sections for items for sale, items wanted, misc (tack, services, clubs, etc.) model show classlists, a "People, Places & Things" section to let you hear about the (yes, you guessed it!) people, places & things that make this hobby special, and our commentary section, which includes "The Litterbox" where you can air your gripes about events, or get the lowdown on the latest rumours. The Model Rag is created with a Macintosh 512K computer, using MacPaint, FullPaint, WetPaint, Mac the Knife, Art a la Mac, and Graphic Works programs.

Our Subscription Rates:

The Model Rag is published bi-monthly, and is sent on the 15th of the month (**February, April, June, August, October, December**). Subscriptions are \$15.00 for a one-year subscription. Trial issues are \$3.25. All issues are mailed flat in manila envelopes, and are sent **FIRST CLASS!**

Our Advertising Rates:

Every subscriber to The Model Rag receives one free 50-word classified ad (not including name/address) per issue. Plus, subscribers are offered reduced rates on additional ads.

The ad rates are as follows:

| | Subscribers | Non-subscribers |
|--|----------------------|----------------------|
| Full page | \$4.00/page/issue | \$8.00/page/issue |
| Half page | \$2.50/issue | \$5.00/issue |
| Quarter page | \$1.25/issue | \$2.50/issue |
| Classifieds (50 words or less) | \$.75/issue | \$1.50/issue |
| Photo Ads (in addition to cost of full or half page ad) | \$2.00/picture/issue | \$4.00/picture/issue |

Deadline for submission of advertising is the 1st of the month that the issue is due out. For example, the deadline for the February 15th issue is February 1st. Advertising and subscription rates are subject to change with one issue's notice. We reserve the right to re-type, shrink-to-fit, and/or edit copy.

Editors:

Heather Wells: 3985 Strong St, Riverside, CA 92501. Heather is in charge of **subscriptions**, material for "The Litterbox" and the "People, Places and Things" columns and questions from the Peanut Gallery. (714) 684-0247.

Kay Fowler: 160 Stony Bank Rd, Glen Mills, PA 19342. All **advertising** should be sent to Kay. Please specify which section you would prefer your ad(s) to go in; e.g. For Sale, Wanted, Misc, Showtime. Phone: (215) 459-0484 (9 am - 9 pm). If you get our answering machine ("Stone Fox Farm") please feel free to leave a message. Also, if you need to send me anything "Express Mail", DO NOT send it to my home address!! Instead, please send it to me at my office: Kay Fowler, Sullivan Payne Co., 8 Penn Center, 17th & JFK, Philadelphia, PA 19103. **Be sure and mark it "Personal & Confidential!"** After all, we don't need Rag advertising going into our account files!

Laurie Jensen: 32891 Calle del Tesoro, San Juan Capistrano, CA 92675. Send her anything you want for her **Drivel** column, plus any pix for Remaker of the Issue, & Old Timer's Album. Also, any frog, slug, racing pig, etc. trivia DEFINATELY goes to Laurie!



FOR SALE

Models, etc

CHAMPION QUALITY at NORMAL PRICES! Our Saleslist includes Proven Champions complete with show pix, New models waiting to win for you, OF models new and Disc., Partially remade prospects and more! *FREE* with SASE. HUGE Sire/Dam listing of Champions of many breeds, 50-cents, plus long SASE with 2 stamps. (or \$1.00 and I'll provide the envelope!) ASTHMA HILLS, Karen P. Malcor, 2408 Hagen Dr, Alhambra, CA 91803

For Sale: Discontinued, SR OF Breyers. List includes Bighorn Ram (\$50), Super glossy Old Timer w/no hat (\$40), Matte Red Roan Running Mare (\$40), Running Stallion (\$60) & Scratching Foal (\$45), Glossy Leopard Western Prancer (\$45), factory CHALK white PAF (\$20), dark bay Trakehner (\$50). Send LSASE to: Daphne R. Macpherson, 5310 136th Place SW, Edmonds, WA 98020.

ATTENTION FOR BID - a Beswick Clydesdale - #H2914 'SPIRIT OF THE EARTH' in gloss brown standing on a ceramic base. The size of a traditional Breyer & excellent detail. Mint condition-wrapped and in original box. He cost me \$200. Always include an SASE w/your bid. NO PHONE CALLS PLEASE!!! Deadline for bids is March 31, 1989. Lynn Marie Duffy - 48 Dodd St - Bloomfield, NJ 07003-4618

FOR SALE: Lots of models. Hagen-Renakers. Breyers, others. Send SASE for complete sales list. Renee S. Mareska, 4107 W. Cielo Grande, Glendale, AZ 85310.

FOR SALE: Breyer CAM RR by Elite Decorations/Kathleen Moody. "My Elite Lady" was the model awarded to the Grand Ch. at the Elite Decorations "Reworkers' Review" photo show, NOV. '88. Since I don't own/show any RR's but my own, I've no use for this horse! This CAM is remade w/head extremely tucked, glass eyes, off hind leg fixed so the model is in a more proper trot. Painted dapple grey (rose grey), w/flaxen-beige colored hair m/r. No pix, sorry! If you entered the show, you saw the model in the results. PRICE: first reasonable offer accepted. Karen Y. Gerhardt/Wizard's Vale, 51 Carnegie Ct., Middletown, NJ 07748.

FOR SALE: Benji & Tiffany w/box, German Shepard, Palomino Fury, black pinto Fury, Bloodhound, alabaster 5-gaiter, tan pinto Western Horse, glossy bay QH gelding, chestnut Race Horse with race saddle, woodgrain Brahma bull and many more. Also horse postcards. Send Large SASE to Laura Diederich, Rt. 2, Berg Rd., Dodgeville, WIS 53533

FOR SALE: 22, 52, 58, 73, 101, 151, 1001, 2090, 2446, 3000, Beswick Exmoor, Others. SASE to Rita Durrell, P.O. Box 373 Monmouth, OR 97370

FOR SALE: Egyptian Manor's Sales List Breyers, Leftons, more. Please send SASE to Egyptian Manor, c/o Cyndy M. Carroll, 19 Lakeview Drive, Vincentown, NJ 08088. Also send SASE for my Aug. "Gaited Horses Only" Show.

FOR SALE: OF & Discontinued Breyers, RRH models by DRM Originals, and custom made-to-order SM/LB jumps, poles, gates, etc. Will accept trades of Sojourner, Maestas, Howard tack; repaints by Froelich, Ross, Lowry; and/or certain OF Beswicks for ZDRM repaints and SM/LB obstacles - sorry, NO TRADES for OF list, though I will consider offers. Send LSASE + \$1.00 for DRM Originals SM/LB tack & obstacle price list (I can not send price list without \$1 - it pays printing costs!) For OF & RR sales lists, send SASE. **Daphne R. Macpherson**/5310 136th Place SW, Dept MR/Edmonds, WA 98020.

FOR SALE: OF Breyers, Hartlands, DW H-R's and repainted sorrel Belgian by Sue Daigle. Send large SASE to Lynn Lindgren, 4633 E. Montecito, Phoenix, AZ 85018.

FOR SALE FROM SANIVEL STABLES: I'm only selling to finance equipment for my new indoor (yeah!) model horse photography studio. All OF's are in excellent condition with no rubs, scratches or factory blemishes. Add \$2.50 for postage on first model, plus \$1 for each additional one. Checks held two weeks, money orders sent right away, cash at your risk. SASE for photos. Trades for LSQ Trad. Breyer RRH's only - send photo.

*** MICHELLE BACON * 16 ROSEBAY DRIVE * ASHLAND, MA * 01721 ***

- 1) Notorious: S.R. all black Hanoverian; super sleek; has placed live; some showmanship pix; \$35.00.
- 2) Stealaway: S.R. dapple grey Adios; great coloring & shading; live show O.F. Grand Champion; pix in halter, WP, trail, EP, hunter; \$30.00.
- 3) 'Appy Ending: S.R. grey blanket appaloosa Indian Pony; really nice; live show Champion; pix in halter, WP, trail, EP, hunter; \$30.00.
- 4) Foals of above: disc. black appy lying foal & black appy scratching foal; some halter pix; \$12 each, \$20 for both or \$45 for both with #3.
- 5) Joshua: S.R. bay Phar Lap; fantastic color & markings; some halter pix; unshown; \$27.00.
- 6) Angel Face: S.R. fleabitten grey Canterng Welsh Pony; really cute; some halter pix; live show placed in open performance; \$27.00.
- 7) Ima Rowdy Ghost: S.R. white Stock Horse Stallion; terrific shading; some halter pix; unshown; \$22.00.
- 8) Breezin' Dixie: limited run from '88, now disc.; I choose from 10-12 others for this one, so she's nice; no pix; unshown; \$22.00.
- 9) Dakota's Lorelei: here's a great little Q.H. mare; she's black with some white, a Stock Horse Mare r/h'd by Carla Clifford; comes with over 55 excellent photos in halter, WP, several western events, EP & ET by Rio Rondo; this is a perfect beginner's horse; only \$40.00.
- 10) Blankets: large Trad.; yellow w/ navy trim; have 2; \$5 ea. & SASE.

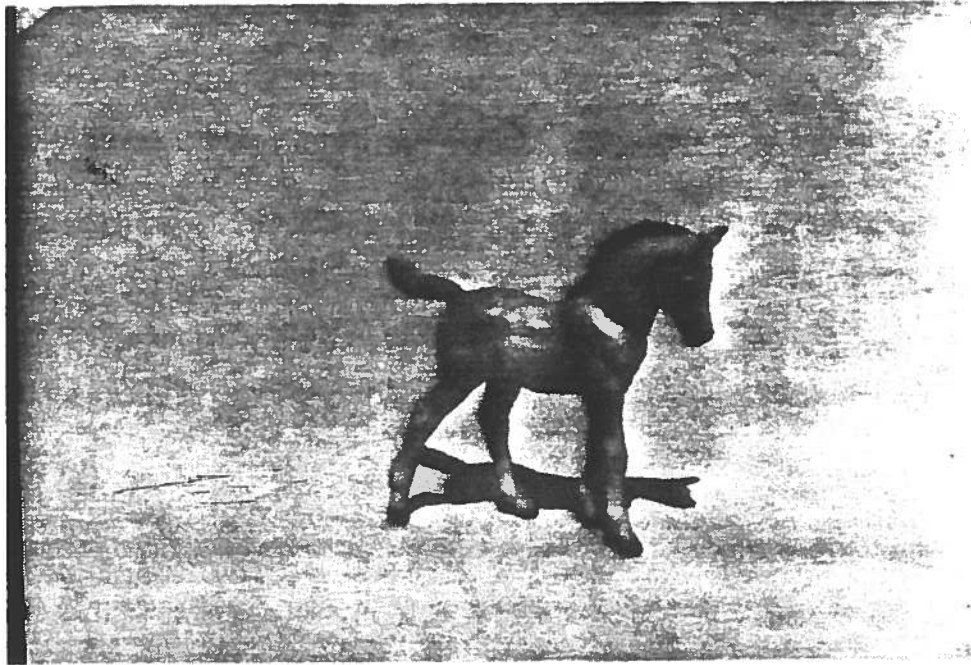
NEED THE BUCKS SALE: I'm saving to purchase a miniature donkey jennet, so everything must go! Thanks to everyone who purchased off my last ad! Nearly everything was sold! Everything is in the cond. stated, and pix only where stated. SASE for reply or to return your \$ in case item is sold. Time payments are fine, paid in 6 weeks or so. I'll hold items by phone for 5 mail days only, call before 9 p.m central time, please! (507) 426-7809. Please look the list over! Thanks. Nancy Olson, Rt.1, Box 25, Fairfax, Mn. 55332 All ppd., insurance is extra.

- 1) HR 9" matt rose grey Amir -teeny chip on one front hoof, touched up, no see. \$140
- 2) ROSEBUD: Brey. Shetland r/r/h by L. Kistler to a darling English bred Shetland mare, head resculpted, glass eyes, hair m/t/fetlocks, carved ears. Rep. dap. bay w/blk. hair m/t, wh. markings - a real doll! Shown by me only a few times and is a multi-champ! Live qual. also. Comes w/halter pix. \$70
- 3) HR Unicorns - Head down, turning, lying, all mint. \$40 each.
- 4) HR standing piglet - matt - mint. \$12
- 5) Brey. SR steel grey clyde foal - mint. \$11
- 6) Beswick glossy disc. Hereford cow - mint - darling! \$50
- 7) 2 Brey. clyde stal. bodies for r/r - one has m/t rem. \$6 each.
- 8) Brey. SM Morgan mare for rep. is ren. grey w/blk. m/t now. mold in ex. cond. \$3
- 9) Freeman-McFarlin lying unicorn in glossy wh. w/shadings, mint. \$20
- 10) HR SR glossy palo. saddlebred, mint, tiny rust brown paint spot on near shoulder under the glaze. One of 50 pieces \$190
- 11) Single horse walking plow - trad. scale. Realistic and live qual. in every way! Mint cond. \$45 pic for insp.

Well, I guess that's it for this time. Since I really want that little jennet I can't accept any trades, sorry!! Please look the list over! Thanks.

JOIN the Model Draft Horse Club! A growing club just for your draft horses!! We have monthly point shows, a small bi-monthly newsletter, and hope to have Natl's and Year End Awards. We need volunteers to judge the remaining '89 point shows. Months open are - Aug., Oct., Nov., and Dec. which is our Natl's. For more information or a copy of our rules, just send a SASE and 10¢ if requesting rules. Thanks...
MDHC c/o Nancy Olson, Rt.1, Box 25, Fairfax, Mn. 55332 \$6 a year.

H-R Auction



D.W. Horses, Dogs, Cats, Bird-Minis

Included are Sherif (above), Nobby w/shoe, Elizabeth (hen), Baby Kitten Kwei Li, and many more.

SO HURRY!

**For a complete listing and bidding information;
send a LSASE to:**

**Antina Richards
5838 Darlene Dr.
Rockford, IL 61109**

Bidding ends - March 30, 1989

CLEAR CREEK STABLES WINTER SALES LIST: Photos are available where stated. Time payments are available: 30% down, balance due in 60 days on sale items. **SHIPPING/HANDLING CHARGES** (Sale items): MODELS: \$3.00 for the first item, (unless otherwise noted), \$1.00 for each additional item in same order. **BRIDLES/HALTERS:** 50¢ each, unless purchased with a model...then no charge. I ship by UPS, so please send street address when ordering. If order must go to a PO Box, then include your phone number so that it can be written on your shipping label for UPS to find you! **PLEASE ENCLOSE A SASE WITH ALL CORRESPONDENCE, INCLUDING PAYMENTS** (so that receipt of payment can be acknowledged). Please allow 5-6 weeks for delivery of items paid for by check, 2-3 weeks for items paid for by MO.

RETURN POLICY: All OF's shipped as is...they are as accurately described as possible as to condition. For tack/RR models the following conditions must be met to receive a refund of purchase price (no refunds for shipping charges): 1. Item must be returned within 5 working days of receipt by buyer. 2. Item must be packed appropriately and insured for full purchase price. 3. Item must be received by seller in same condition as when shipped. 4. A letter stating reasons for return must accompany item. 5. Refunds only given on items found to be defective.

REBECCA HILMAN, PO BOX 518, CONWAY, AR 72032

AT AUCTION: A RARE COLLECTOR'S PIECE: A JANICE BRENT ORIGINAL RUNNING STALLION SCULPTURE.

Shown heavily a few years ago as "Dragonlayer". He is not only a collector's piece, he is a dandy show horse too. Multi-champion, was AMAHA 1984 OF Horse of the Year showing ONLY in halter! And he's STILL winning championships! Painted in oils to a GORGEOUS blood bay with black points. There are not too many of this particular sculpture around as this was a limited run of 50. He comes with several 35mm halter photos. He's in perfect shape, no breaks, chips or scratches. Made of a porcelain material. (He will be shipped double boxed!)

Color viewing photos available for SASE.

MINIMUM BID: \$150.00 (postage will be included in selling price.) BIDS CLOSE April 15, 1989. SASE with all bids, notification will go out April 16th, 1989. Please bid in even dollar amounts.



FOR SALE

BREYER LB OH: Rep/rem/hrd by CCS. Now a red bay App w/frosted blanket over hips, roany blaze, light roaning on shoulders. Black hair mane/tail. Mottled skin around nose, eyes, striped hooves. Halter photo. \$18.00

BREYER CLAS JET RUN: Rep/rem/hrd by CCS. Remade to a collected walk, rep. lovely chestnut w/2 hind socks, star and snip, chestnut hair mane & tail. Ears carved. An outstanding english & dressage prospect, should also show respectably in western pleas/trail. 35mm halter photos. \$55.00

BREYER LB ASS: Rep/rem/hrd by CCS. Blood bay tobiano pinto ASS. Remade to a flashy correct trot on a base. Black hair mane/tail. One hind leg was broken, has been repaired and set with a pin...you have to look hard to see the break! 35mm halter photos. \$25.00

HARTLAND TENITE 9" 5 GAITED ASS: rep/rem/hrd by CCS. Now positioned in a flashy park trot on a base. Rep. a golden palomino w/flowing white hair mane/tail. Raised hooves & ears carved. 35mm halter pix. \$55.00

BREYER ADIOS/YELLOW MOUNT: Rep/rem/hrd by CCS. Remade with head slightly turned to the left and tipped down a little, front legs adjusted so he's no longer standing base close. Rep. a gorgeous blue roan, with blk points, 2 white hind socks, narrow blaze. He's really sharp! 35mm halter pix. \$55.00

ORIGINAL FINISH MODELS

ORIGINAL HARTLAND 9" 5 Gaiter, metallic sorrel. Near mint cond. Factory eyewhites! Has a very small rub on hip and one on barrel. \$30.00

ORIGINAL HARTLAND 9" Rearing Mustang. Black and white pinto. Factory eyewhites. White markings have yellowed a bit. Has rubs above eyes, some light rubs on dark areas. VERY OLD MODEL! \$25.00

BREYER DISC. OLD TIMER: Glossy dapple grey with hat! Near Mint cond, has two small rubs on harness. \$25.00

BREYER TRAD. MAN O WAR: Model has no breaks or chips, but does have a fairly large area on one side where the paint is much lighter. Rep. prospect. \$8.00

ORIGINAL HARTLAND 9" Bay Walking TB. Dark bay, black shadings, no white. Exc. cond, has some light surface scratches (they don't show white). \$25.00

ORIGINAL HARTLAND from Horse & Rider series. Black standing models, molded on gold/brown bridle. No reins or saddle. Ears chipped, missing eartips. Horse has some rubs & scratches. Back seam split slightly. \$5.00

BREYER DISC BLACK BUCKING BRONCO, very good cond. Rub on top of hindquarters, some other small rubs and light surface scratches. \$35.00

BREYER DISC. INDIAN PONY, brown blanket App, mint in box! \$25.00

BREYER DISC. POA, bay blanket App. Exc. cond except for a small factory rub behind elbow. \$20.00

TACK

CALIFORNIA BRAID & FLAT BRAID HALTERS & BRIDLES BY CCS

Something different from the usual in "western wear" for your model horses! Photos are not available of the exact items listed below, but we have plenty of sample photos of similar items available for viewing!

CALIFORNIA BRAID BRIDLES: All of the following have curb bits by Rio Rondo, sliding ear headstalls and split reins, and they're all adjustable and will fit most any Trad. Breyer.

TRAD SIZED, dark brown braided core, cream buttons. \$22.00

TRAD SIZED, gold braided core, dark brown buttons (this looks SHARP on bays!) \$22.00

TRAD SIZED, dark brown braided core, cream & rust buttons. \$22.00

CALIFORNIA BRAID HALTERS: All are adjustable.

LARGE TRAD SIZE, dark brown braided core, cream & rust buttons. \$12.00

TRAD SIZED, medium brown core, cream & dark brown buttons. \$12.00

TRAD SIZED, dark brown core, cream buttons. \$12.00

TRAD SIZED, dark brown core, cream & rust buttons. \$12.00

CALIFORNIA FLAT BRAID BRIDLES: All of the following have curb bits by Rio Rondo, sliding ear headstalls, and split reins and are adjustable.

TRAD SIZED, dark brown leather core, cream & rust buttons. \$22.00

TRAD SIZED, medium brown leather core, dark brown & cream buttons. \$22.00

CALIFORNIA FLAT BRAID HALTERS: All of the following are adjustable.

LARGE TRAD SIZED, dark brown leather core, cream buttons. \$12.00

TRAD SIZE, medium brown leather core, cream & dark brown buttons. \$12.00

Breyers, Hartlands, Beswicks for sale. SASE to Lani Keller, 20049 Dorothy St., Canyon Country, CA 91351 (805) 252-8292 eves. after 6, Fri after 8 p.m. Postage \$2.00 for first, \$.50 each additional. CONDITION: FTR - few tiny rubs, FSR - few small rubs, SY - slightly yellow, Rep - Repaint, MSR - many small rubs

- | | |
|---|---|
| 1. Woodgrain FAS real nice, FTR...\$40 | 35 Hart Polo Pony, buckskin, MSR |
| 2. WG FAM, FSR, ears filed a little...\$25 | 36. Hart pinto foal, FTR, real white \$5 |
| 3. WG FAF, FTR...\$20 | 37. Hart bay Wnlg, MSR, pretty...\$10 |
| 4. Black Spanish Bull, NM...\$20 | 38. Hart 7" Appy mare missing raised leg, FSR...\$5 |
| 5. Black Angus Bull, NM, brn halter...\$25 | 39. Hart App Foal, FSR, nice, earchip...\$7 |
| 6. Chalky finish Yellow Mount, MSR...\$12 | 40. Hart App Foal, NM...\$10 |
| 7. Chalky finish Clydes Stal, FTR...\$25 | 41. Hart Appy Stal, NM...\$15 |
| 8. Chalky finish Jumper, real nice...\$25 | 42. Hart Appy Mare, 2 broken hind legs |
| 9. Chalky finish PAF mahogany bay...\$15 | 43. Hart ASB Foal, chest, NM...\$10 |
| 10. Dapple grey Running Foal, SY...\$15 | 44. Hart 7" TWH Family, best offer, (stallion FSR) |
| 11. Pinto Ind Pony, no war paint, SY...\$40 | 45. Hart 9" Arab Stal, old chest, FTR...\$25 |
| 12. Clas Arab Family, old & beautiful..\$30 | 46. Hart 9" Arab Stal, white, real nice...\$35 |
| 13. Old Lady Phase, dark, FSR...\$20 | 47. 9" Copper Arab Stal, MR, cracked chest...\$10 |
| 14. Old PAF, gl white, VSY...\$20 | MORE BREYERS: |
| 15. Western Pony, old palo, grey eyes, reins...\$12 | 48. Mahogany Bay PAM, FSR, pretty...\$30 |
| 16. Bay Graz Foal, NM...\$15 | 49. Bay Fighting Stal, very nice...\$25 |
| 17. Palo Graz Foal, FTR...\$15 | 50. Old Timer matte white w/hat, NM \$25 |
| 18. Palo Graz Mare, FTR...\$30 | 51. "Calico" (Tiger) Kitten, very yellow best offer |
| 19. Mustang Family FTR on S/F...\$15 | 52. FAM gl red bay w/eyewhites FTR \$20 |
| 20. FAS, gloss lt bay, nice...\$20 | 53. Shetland gl white, FTR m/t...\$20 |
| 21. FAM, gloss white, dark m/t...\$20 | 54. App Perf, ches w/blnkt FSR...\$15 |
| 22. FAF, gloss white, FR on tail...\$10 | 55. Rep San Domingo bay pinto, star & snip, 4 high stockings, rep '81 by Mary S. Humphreys, nice...\$30 |
| 23. Haflinger, 1 sm scratch...\$25 | 56. Beswick Trot. Clydes (975?)...\$40 |
| 24. Old Kelso real dark, 1 rub hip...\$5 | 57. Beswick Dap Grey Kayal...\$40 |
| 25. Bay Bronco, repaired leg, nice...\$40 | 58. Bes Dap Grey Walk. Horse (855) \$40 |
| 26. Red Roan Lying Foal, 2 TR...\$30 | MANY SPECIAL RUNS FOR TRADE |
| 27. El Pastor, FTR...\$25 | **NEW MODELS WEEKLY - WRITE FOR UPDATE |
| 28. Pinto Indian Pony, real nice, SY...\$50 | **SEND WANT LISTS |
| 29. PAF, matte white, VSY...\$12 | |
| 30. Chest. Canterng Welsh, red ribbons minor factory flaws, pretty...\$35 | |
| 31. Shetland, gloss chest pinto FTR...\$25 | |
| 32. Jolly Cholly Basset Hound, NM.\$20 | |
| 33. Adios, dark brown, FTR...\$25 | |
| 34. Hartland 7" TWH Stal for rep | |

~~~~~

Always something for sale! Hagen-Renakers, Breyers - OF, RRH, SR & discontinued. List is updated 4 times a year (15th of April, July & Oct) with new items. The current list includes:

- H-R Quarter Horse Mare in rare matte buckskin (\$150.00)
- H-R 9" Amir in matte palomino (\$135.00)
- Kaiser Porcelain QH of N. America rep bay (\$200.00)

Prices start at \$5.00 & photos of all RR models are included. For complete list, send business sized SASE with an extra stamp to: Lisa Strang, 460 Swamp Creek Rd, Schwenksville, PA 19473. This is the largest saleslist ever!



PINE RIDGE STABLES  
c/o Leah Fuller  
421 Stevens Rd. #24  
Eagle Point, OR 97524

GOING OUT OF HOBBY SALE!!! I really hate to sell all these beautiful and excellent horses, but I will be moving soon and won't have the time or room for all the models. This is the latest list available from me. Please help give these special models a good show home. All models are postage paid. When a model has an "I" after the price it means that it's name, breeding, etc. cannot be changed. \* = models w/viewing pix. If price is too high, make offer.

1. OF #3055 Classic Arab Mare and Foal only - mint - \$12\*
2. OF #9030 Chestnut LB ASB - mint - \$5\*
3. OF #601 Kelso - newer color - mint - \$7
4. OF #601 Kelso - older color - mint - \$7
5. OF #604 Swaps - mint - \$7\*
6. OF #68 Legionario III - mint - \$12\*
7. OF #9020 LB Unicorn - mint - \$5\*
8. OF #20 Misty - mint - \$8
9. OF #23 Shetland Pony - mint - \$7
10. OF #84 Clydesdale Foal - mint - \$8\*
11. OF #215 dapple grey PAM - mint - \$10\*
12. OF #103 Appy Yearling - mint - \$10
13. OF SR #64 liver chestnut Azteca - mint - \$25\*
14. OF SR Limited Edition Cips - mint - \$25\*
15. OF SR Adios - dapple grey - touched up hoof that had no color, otherwise mint - \$20\*
16. OF SR #3035 USET Set - mint - \$25
17. OF #213 dapple grey PAS - glossy - great - \$15
18. OF #153 Palomino Grazing Foal - few small rubs - \$10
19. OF #? Grey Appy Family Arab Foal - matte - couple tiny rubs - \$10
20. OF #50 Adios - great - \$25\*
21. OF #88 Overo Paint - mint - older color - \$35\*
22. OF #3085 SM Gift Set - stallion & foal only - both great - \$10\*
23. OF #156 Haflinger Pony - mint - \$20\*
24. OF #63 Halla - mint - \$20\*
25. OF #21 Glossy b/w pinto Shetland Pony - slightly yellowed - \$8
26. OF #105 chestnut Cantering Welsh Pony - great - \$20\*
27. OF #64 - newer version - few rubs & scratches - rr? - \$4
28. OF #64 - older version - more rubs & scratches - rr? - \$4
29. OF #66 - chipped ear is only fault, otherwise showable - \$6\*

RRH MODELS - LSQ = Live Show Quality

30. Flashaway Cody - SHS rrh to a dapple bay overo Paint stallion and remade in a canter by Tammy Fields. Pix in most Western events and halter/show. Possible LSQ. \$40\*
31. Greyhawk's Legend - #52 ASB repainted only to a bay ASB by me. LSQ and placed! Comes w/halter pix. \$20\*
32. DQ Piece of My Heart - Lady Roxanne rrh to a dapple rose grey Arab gelding and remade to a canter (no base needed) by Linda Leach. Has shoes. Really pretty. Already a champion! Comes w/pix in halter/show. and costume. LSQ. \$45\*I
33. AH Devil's Try Again - #103 yearling rh to a bay overo Paint mare by Karen Malcor. **HOLD** Gorgeous shading! Comes w/pix in halter. Possible LSQ. \$35\*
34. Anzac - SM Morgan stallion rrh to an Albino stallion by Jan Batts. Comes w/pix in almost all events. \$20\*
35. Vintage - Azteca mold repainted only to a red chestnut Barb by me. Shows well. Comes w/pix in halter. Possible LSQ. \$15\*
36. Foolish Fire - #602 Cl. Man O War rr to a bay TB stallion w/head lowered slightly by me. Comes w/halter pic. LSQ and placed! \$15\*

- 37. War Games - Hartland TB repainted only to a muddy dun overo Paint stallion by me. Comes w/halter pix. Possible LSQ. \$10\*
- 38. Cajun Spices - Cl. QH Foal touched up to a bay Appy colt w/blanket and tri-eyes by an unknown artist. Photo show champ. Comes w/halter pix. \$8\*
- 39. Sable Dawn - SM ASB touched up to a bay tobiano ASB mare by me. Already a multi-champ in photo shows. Comes w/halter pix. Possible LSQ. \$10\*I

TACK (LSQ)

- 40. Forward Seat English Saddle - Trad. size. Dk brown. Elastic girth, metal stirrups & tree. Padded seat. Comes w/white saddle pad. \$10
- 41. Park Saddle - Classic size. Same as above. \$7
- 42. Dressage Saddle - Trad. size. Same as above. \$10
- 43. Pelham Bridle - Trad. size. Dk brown. Fully adjustable. 1 bit, 2 reins. \$5
- 44. Plain Western Bridle - Trad. size. Dk brown. Browband style w/split reins. No noseband. Fully adjustable. \$10\*
- 45. Draft Breeds Show Bridle - brand new - white with snaffle bit - by S. Rowe - \$10

NEW ADDITIONS

- Assorted SM's: Either mint or rr prospects. Please inquire with wants.
- 46. Nightmaster Commander - #52 ASB r/h to a black/white tobiano ASB stallion by Janice Meixner. One of her best RR's. Comes w/halter pix. LSQ. I might keep him if not sold quickly as he is a great show horse. \$65.00\*I
  - 47. Serafix Destiny - CAF r/r to a bay Arab filly in a trot by me. Very cute! Possible LSQ. Comes w/halter pix. \$10\*I

MOVING - MUST SELL! Janelle Woodfill, Box 111, Lakeland, MN 55043, 612-436-7722, no collect calls. Postage: \$2.00 per item, \$1.00 each additional.

Breyers - Excellent condition unless noted:

NEW IN YELLOW BOXES

|     |                                 |     |                                           |
|-----|---------------------------------|-----|-------------------------------------------|
| 40  | Lady Phase...\$25.00            | 98  | Buckskin Geld...\$23.50                   |
| 46  | Liver Pacer...\$23.50           | 99  | Leop. App Perf, yellow...\$20.00          |
| 51  | Yellow Mount...\$23.00          | 100 | Galiceno, rubs...\$18.00                  |
| 66  | Stud Spider...\$20.00           | 105 | Chest. CWP, rubs...\$28.50                |
| 85  | Azteca...\$22.00                | 109 | Dapple 5-Gaiter...\$15.00                 |
| 87  | Buckskin Mustang...\$23.00      | 110 | Smoke Prancer, no tack,rubs...\$10.00     |
| 102 | Palomino Yearling...\$20.00     | 112 | Palo Prancer, no saddle...\$10.00         |
| 103 | Sandy Bay App Yrlg...\$20.00    | 116 | Cips (no price listed)                    |
| 174 | App Indian Pony...\$25.00       | 117 | Pinto 5-Gaiter...\$12.50                  |
| 232 | Bay/blanket App SHS...\$23.00   | 118 | Chestnut Mustang...\$15.00                |
| 233 | Black/blanket App SHM...\$15.00 | 120 | M Alab Run Stal, yellow & rubs...\$16.00  |
| 401 | Black Stallion...\$15.00        | 125 | M Alab Run Mare, yellow & rubs...\$12.00  |
| 410 | Sham...\$18.00                  | 130 | M Alab Run Foal, good...\$10.00           |
| 415 | Buckshot...\$18.00              | 133 | G dapple Run Foal, broken eartip..\$12.00 |
| 16  | Sea Star Foal...\$12.00         | 166 | Lying Foal, buckskin...\$20.00            |
| 23  | Bay Shetland Pony...\$10.00     | 201 | M charcoal FAS...\$16.00                  |
|     |                                 | 202 | M charcoal FAM...\$16.00                  |
|     |                                 | 203 | M charcoal FAF...\$11.00                  |
|     |                                 | 205 | M dap gery Old Timer...\$22.50            |

NEW IN PLASTIC BOXES:

|     |                                 |     |                                 |
|-----|---------------------------------|-----|---------------------------------|
| 116 | Cips...\$22.50                  | 221 | Buckskin SHS...\$12.00          |
| 140 | Wing Commander...\$15.00        | 222 | Buckskin SHM...\$12.00          |
| 702 | Bay Stretched Morgan...\$15.00  | 225 | Buckskin SHF...\$7.00           |
| 704 | Bay TWH...\$15.00               | 234 | Grey App Standing SHF...\$10.00 |
| 709 | App Fighting Stallion...\$17.00 | 236 | Black Pinto Stand. SHF...\$8.00 |
| 711 | Breezing Dixie...\$18.50        | 425 | Lady Roxana...\$9.00            |

**BREYERS:**

7 M Alab FAS, yel & rubs...\$12.00  
 8. M Alab FAM, yel & rubs...\$12.00  
 13 G Bay FAS...\$23.00  
 14 G Bay FAM...\$23.00  
 17 Old Stock Foal, brown app...\$12.00  
 18 Old Stock Foal, black app...\$12.00  
 30 M Alab Fighting Stal...\$16.50  
 35 Bay Fighting Stal...\$18.00  
 37 G App FAS, tiny rubs...\$20.00  
 38 G App FAM, tiny rubs...\$20.00  
 37 M App FAS, good, tiny rubs.\$20.00  
 38 M App FAM, good, tiny rubs.\$20.00  
 39 M App FAF, good, tiny rubs.\$12.00  
 40 Lady Phase...\$23.50  
 41 Black pinto West Pony, slip  
 saddle, rubs...\$10.00  
 43 G palo West Pony, snap sad.\$15.00  
 46 Liver Pacer...\$20.00  
 47 Man O' War...\$12.50  
 50 Blk/pi West Horse, snap sad.\$25.00  
 57 G palo West Horse, snap sad.\$20.00  
 61 Bay El Pastor, rubs...\$23.00  
 62 Chest ASB Wnlg, rubs...\$28.00  
 64 Black Foundation Stal...\$20.00  
 80 Bay Clydes Stal, gold braids,  
 one ear broken...\$12.50  
 94 Chestnut Belgian...\$22.50  
 97 Sorrel App Geld, rubs...\$15.00  
 226 Palomino SHS...\$20.50  
 226 Brown non-white app SHS...\$13.00  
 227 Brown non-white app SHM...\$13.00  
 236 Brown non-wh app Act SHF...\$13.00  
 229 Black pinto SHS...\$15.00  
 230 Black pinto SHM...\$20.00  
 231 Black pi Act SHF...\$10.00  
 3095 Sorrel App Perf...\$23.00

PALOMINO CLOCK HORSE - BEST OFFER!  
 SNAP SADDLE - SESSIONS CLOCK  
 HORSE FACES CLOCK - MINT!!

430 Sherman Morgan...\$10.00  
 1120 Brown pinto West Prancer...\$25.00  
 2075 Brighty...\$18.00

**SPECIAL RUNS:**

4 Light Chest FAS...\$23.00  
 5 Dark Chest FAM...\$25.00  
 6 Dark Chest FAF...\$12.00  
 51 Chest App "Adios"...\$18.00  
 51 Dap Grey "Adios"...\$20.00  
 51 Palomino "Adios"...\$20.00  
 64 White Foundation Stal...\$22.50  
 64 Brown smoke Found. Stal...\$15.00  
 67 Bay "San Domingo"...\$18.00  
 67 Black Gold...\$28.50  
 68 Chestnut Legionario...\$23.00  
 89 Bay "Black Beauty"...\$18.00  
 92 Dap Grey Belgian...\$22.50  
 93 Smoke Belgian...\$22.50  
 94 Black Belgian...\$22.50  
 98 Chestnut Gelding...\$23.00  
 123 M dap grey Run Mare...\$19.00  
 133 M dap grey Run Foal...\$9.50  
 124 Bay Run Mare, no socks...\$18.00  
 134 Bay Run Foal, no socks...\$8.00  
 213 Bay PAS...\$20.00  
 213 Chestnut PAS...\$20.00  
 215 Brown Pinto PAM...\$18.00  
 220 Brown Pinto PAF...\$8.00

**HARTLANDS**

\*9" Seal Brown Polo Pony...\$10.00  
 9" Woodgrain Rearing Stal...\$23.00  
 9" Chest semi-rear, no tack, broken  
 mane...\$8.00  
 \*9" Grey Grazing Mare...\$10.00  
 \*9" Bay Walking TB...\$10  
 7" Buckskin QH, rubs...\$7.00  
 5" Buckskin QH, rubs...\$6.00  
 5" Buckskin Foal, rubs...\$5.00

**TENITE MATERIAL:**

\*9" Palomino ASB...\$12.50  
 \*9" Bay Arab Stal...\$12.50  
 \* - Stevens Re-Issue

Quote from the "From the Mouths of Babes" Department...  
 What Merryl Jensen (age 2 1/2) said to Diane Jenkins as Julian walked  
 away, down the driveway at Laurie's live show...  
 "Oh-oh, there goes your man!"

**BREYER**

## **Bentley Sales Company**

**Serving model horse collectors since 1969**

- We stock all current Breyer models
- Sam Savitt Charts & Posters
- Fast delivery, guaranteed good condition
- Many special & discontinued models available
- Satisfaction guaranteed

Write for a free price list & brochure

*Bentley Sales Company*  
642 Sandy Lane • Des Plaines, IL 60016  
(312) 439-2049



## **CORD & CO. MODEL EXCHANGE**

- The best computer service for locating buyers and sellers of previously-owned Breyer model horses.
- Buy or sell original finish models – single pieces or entire collections.
- Locate the Breyer model of your memories, complete your collection, or find the buyer for your rare models.

For complete information, send a long S.A.S.E. to:

Cord & Co.  
*The Model Exchange*  
18 W 167 Buckingham  
Villa Park, IL 60181  
(312) 629-4827

AT AUCTION - TO BENEFIT THE MODEL RAG  
CLASSIC ARABIAN STALLION  
R/R/H BY MOODY & JENSEN

A rare opportunity to own a model remade by Kathleen Moody, the sculptress of Hartland's new "Lady Jewel and Jade." Repainted and hairing was done by our own Laurie Jensen, "artiste extraordinaire." (Can you tell she wrote this copy?)

This unique horse is a Breyer Classic Arabian Stallion remade so his front leg is lifted back. His ears and hooves are carved.

Laurie's painted him a rich dappled blood bay. He has an irregular blaze with snip, roaning in flanks and by the tail, and two stockings. His mohair mane and tail are black with wispy accents of white.

This strikingly beautiful stallion would be a fine addition to anyone's collection. He is definitely live show quality and comes with several good halter photos.

STARTING BID: \$25.00 postpaid....1/3 to The Model Rag

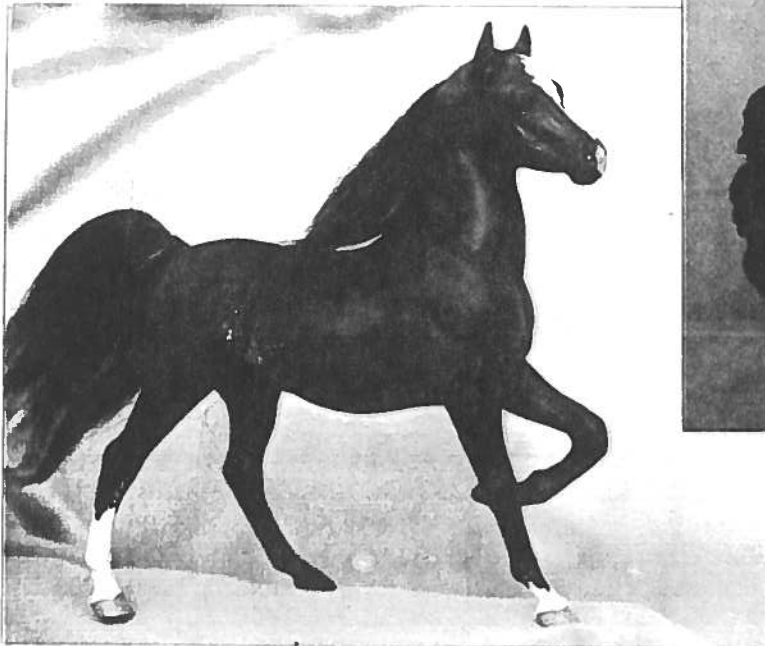
ALSO AT AUCTION....

OLD GREY BUCKING BRONCO

Good condition, slightly yellowed, hard to find model.

STARTING BID: \$10.00 postpaid....100% to The Model Rag

Send bids to: Heather Wells, 3985 Strong St, Riverside, CA 92501. Bids close noon, March 31, 1989. Phone bids O.K. - no collect (714) 684-0247. One dollar increments only. Thirty days to pay - non-refundable.



These horses are for sale, or trade for OF models only. Please add \$2.50 for the first model and \$1 for each additional (in U.S., write for foreign rates). I ship UPS unless you request parcel post. Excess postage over \$1 will be refunded if you send a SASE. Money back guarantee within two weeks. Write or call (no collect calls) for more info. Please send a SASE with all inquiries. Thanks! Liz Strauss 2369 Tiffin Rd., Oakland, CA 94602 (415) 482-1508

Key: E = may have rubbed ears and hooves or pinpoint rubs in hard to see places. VG = light scuffs or very tiny rubs. GD = scuffs, small rubs. FR = medium-large rubs. Y, SY = yellowed, slightly yellowed. X = except. BE(s), BET(s) = broken ear(s), broken eartip(s). GL = glossy. O = older, no USA on matte models. M = matte. SG = semigloss.

- |      |                                                    |       |                                                                                             |
|------|----------------------------------------------------|-------|---------------------------------------------------------------------------------------------|
| #4   | SG Palo FAS, GD-VG...\$9                           | #97   | Appy QH Geld, VVG...\$23                                                                    |
| #4   | M Palo FAS, VG...\$7                               | #99   | Appy Perf Horse, chalky finish, a real beauty! Broken tail, will reattach well.....\$30     |
| #7   | M Alab. FAS, GD-VG X SY...\$15                     | #101  | Liver Chest. QH Yrlg, VG...\$26                                                             |
| #7   | M Alab FAS, GD X SY...\$12                         | #102  | Palo QH Yrlg, VG-VVG...\$26                                                                 |
| #7   | GL Alab FAS, VG X BEs...\$8                        | #105  | Chest. Canterng Welsh Pony, bald face, VVG X BET...\$30                                     |
| #7   | GL Alab FAS, VVG...\$16                            | #110  | Smoke West. Prancer, FR,BE,O...\$5                                                          |
| #7   | GL Alab FAS, E...\$22                              | #110  | Smoke West. Prancer, VVG X BE, reins & saddle...\$20                                        |
| #15  | M Bay FAF, VVG...\$12                              | #111  | Buckskin West Prancer, VVG X BE reins & saddle...\$20                                       |
| #9   | GL Alab FAF, GD...\$9                              | #112  | Palo West. Prancer, GD-VG, old tan color...\$14                                             |
| #9   | GL Alab FAF, E X SY...\$12                         | #112  | Palo West. Prancer, GD-VG, old tan color, reins, Y...\$25                                   |
| #9   | GL Alab FAF, VVG...\$15(have 2)                    | #120  | Alab. Running Mare, VG...\$45                                                               |
| #13  | GL Bay FAS, GD...\$11                              | #124  | Bay Running Mare, E...\$15                                                                  |
| #13  | GL Bay FAS, VG X BE & Y...\$11                     | #127  | Appy Running Stal, VG...\$23                                                                |
| #13  | M Bay FAS, VG...\$20                               | #130  | Alab Run Foal, VG, SY, O...\$28                                                             |
| #14  | M Bay FAM, VVG, O...\$23                           | #130  | Alab Run Foal, VG,O,Y...\$25                                                                |
| #17  | Brown Spot. Stock Foal, E, O...\$15                | #141  | Bay Grazing Mare, GD-VG...\$23                                                              |
| #22  | GL Palo Pinto Shetland, VG...\$15                  | #129  | Bay Run Stal, VVG...\$27                                                                    |
| #17  | Brown Stock Foal, VG...\$13                        | #143  | Palo Graz Mare, VG...\$18                                                                   |
| #27  | Black Fury, GD, Reins only, eartips chipped...\$12 | #153  | Palo Graz Foal, GD, O...\$10                                                                |
| #21  | SG Black Pinto Shetland, GD...\$13                 | #153  | Palo Graz Foal, VG...\$14                                                                   |
| #25  | GL Alab Shetland, GD X BE...\$9                    | #151  | Bay Graz Foal, EX X Y, grey legs...\$12                                                     |
| #27  | Black Fury, GD-VG, earchip, no tack.\$20           | #155  | Leopard POA, VVG...\$35                                                                     |
| #27  | Black Fury, VVG, no tack...\$35                    | #151  | Bay Graz Foal, VVG...\$15                                                                   |
| #30  | M Alab Fighting Stal, VVG...\$20                   | #165  | Appy Lying Down Foal, new in box...\$15                                                     |
| #33  | GL Palo Fighting Stal, tan color, GD-VG, SY...\$35 | #165  | Appy Lying Down Foal, FR-GD, BETs...\$5                                                     |
| #32  | GL Appy Fighting Stal, VG X Y...\$45               | #168  | Appy Scratching Foal, GD-VG...\$9                                                           |
| #37  | GL Appy FAS, GD-VG, no Breyer stamp.\$20           | #174  | Appy Indian Pony, VVG...\$25                                                                |
| #37  | GL Appy FAS, VVG X SY...\$25                       | #180  | Alab Rear. Stal, E X SY...\$10                                                              |
| #38  | GL Appy FAM, VG X Y...\$20                         | #183  | Palo Rear Stal, VVG...\$11                                                                  |
| #38  | GL Appy FAM, VG...\$25                             | #183  | Palo Rear Stal, new in box \$15 (have 2)                                                    |
| #39  | GL Appy FAF, VG...\$15                             | #190  | Black Bucking Bronco, GD-VG...\$28                                                          |
| #41  | Black Pinto West Pony, VVG, reins.\$16             | #4000 | Black CAF, GD-VG, Eartips, ear edges, and tip of tail rubbed. Several other tiny rubs...\$7 |
| #41  | Black Pinto West Pony, GD...\$8                    | #211  | Alab PAS, VG X couple small yellowish spots...\$25                                          |
| #41  | Black Pinto West Pony, VG...\$8                    | #212  | M Bay PAS, VG...\$24                                                                        |
| #45  | White West Pony, GD, reins...\$16                  |       |                                                                                             |
| #55  | Black Pinto West Horse, FR-GD, BET.\$8             |       |                                                                                             |
| #61  | El Pastor, VG X BE...\$12                          |       |                                                                                             |
| #61  | El Pastor, GD...\$20                               |       |                                                                                             |
| #50  | Adios, VVG, BE repaired, socks touched up...\$26   |       |                                                                                             |
| #50  | Adios, VVG...\$35                                  |       |                                                                                             |
| #66  | GL Boxer, no Breyer stamp, VVG...\$30              |       |                                                                                             |
| #71  | GL Hereford Bull, VVG...\$30                       |       |                                                                                             |
| #97  | Appy QH Geld, GD X BET...\$10                      |       |                                                                                             |
| #909 | Woodgrain FAF, VVG...\$24                          |       |                                                                                             |
| #97  | Appy QH Geld, VG...\$15                            |       |                                                                                             |

#216 M Bay PAM, VVG...\$26  
 #216 SG Bay PAM. GD-VG...\$22  
 #218 M Alab PAF, VG...\$14  
 #219 SG Bay PAF, E X scratches on top of back-can't really see from the side...\$11  
 #219 SG Bay PAF, FR-GD...\$6  
 #625 Hobo (no stand), VG...\$15  
 #625 Hobo (no stand), VVG...\$18  
 #909 Woodgrain FAF, GD-VG...\$18  
 Penney's SR Trad Size Peppercorn Appy Family, Stal, Mare & Foal. Mare has rub on eye...\$45/set  
 SR Grey Appy SHM, VVG...\$30  
 SR Grey Appy SHS, E...\$30  
 SR USET horses, new in box...\$40/set  
 SR Golden Bay Trakehner, mint...\$50  
 #3155 TB Mare, FR-GD. Touch up or repaint prospect...\$12  
 #3155 TB Foal, GD. Dun color...\$10  
 Hartland copper Morgan Fam Stal, Styrene, VVG...\$12  
 WANTED: SR Dapple Grey Phar Lap

SR Dapple grey CAS, EX...\$50  
 Hartland 9" Ebony Woodcut TWH, EX X seam split slightly 1" long on back...\$40  
 Hartland 7" 3-Gaited Foal, sorrel, VG, beautiful shading...\$14  
 #68 White Poodel on lamp base. Dog is VVG. Lamp is black metal w/gold metal plate on top, 23" high to top of shade. Shade is cream colored slubbed silk (?) and is quite clean. Lamp works!...\$50  
 #3040 Classic Black Beauty, VVG...\$5  
 #3040 Classic Ginger, VVG...\$5  
 #3040 Classic Duchess, VG...\$5  
 Alabaster Pacer, VG, SY...\$19  
 Hartland 7" TB Mare (Grazing) bay w/ lots of shading, VG...\$15  
 Hartland Matt Dillon rider, VVG, no hat or gun...\$20

The following horses are from a very old collection I'm selling for a friend, so trades will not be accepted:

#7 GL Alab FAS, GD-VG, no Breyer stamp...\$20  
 #30 GL Alab Fighting Stal, VVG...\$60  
 #33 GL Palo Fighting Stal, VG...\$50  
 #81 Donkey, GD, old light grey color, no Breyer stamp...\$13  
 #217 GL Alab PAM, VG X BET, SY...\$25  
 #218 GL Alab PAF, VG...\$25  
 Hartland Bullet, GD...\$20

*Where Dreams Come True...*

# *Dreams By Design*

*Years of experience are now at  
 your service  
 Guaranteed  
 Remaking, Repainting, Repairing*

*Send legal size S.A.S.E. for  
 information and order forms.*

*c/o Karen Cassavant  
 15945 East Lonesome Lane  
 Chandler, Arizona 85249*





Sale

Please add Postage to prices.

- Western Prancer - Smoke - \$50
- Western Prancer- Dk. brown/chest. \$70
- Western Prancer- Palomino Pinto \$45
- Old Timer- White-Not Yellowed! \$60
- Old Timer -Gloss dapple grey \$45
- Pharlap-semigloss w/P. Stone Sig. \$35
- Belgian-unpainted white \$30
- Belgian-Red Roan-\$100
- Belgian-Black \$40
- Belgian-chestnut \$35
- Racehorse-woodgrain \$100
- Appaloosa Perf. Horse-SR Grey App \$50
- Appaloosa Perf. Horse SR Sorrel App \$45
- Apaloosa Perf. Horse Leop. \$35
- Indian Pony- Buckskin \$90
- Indian Pony- Alabastor-\$100
- Indian Pony- Brown App/blanket \$25
- Indian Pony- SR Leop. App. \$50
- Hanovarian- SR White \$70
- Hanovarian- SR Sorrel \$70
- Stretched Morgan- bay/bald face(not curr.)\$70
- Stretched Morgan-black-very matte, no shine! \$40
- FAS- SR Light Chestnut \$50
- FAM- SR Dark Chestnut \$50
- Bronco- old Black bald face \$45
- Bronco - old black blaze face \$50
- 5 Gaiter- gloss palo. \$100
- Pacer-black SR \$45
- Pacer- Alabastor \$45
- Running Foal-SR Flocked Palo. \$15
- Misty/Stormy- SR Flocked pintos \$40/set
- Fighting Stallion-gloss grey app \$80
- PAS Dapple grey w/black points \$80
- PAS Alabastor \$55
- PAS Mahong. Bay \$50
- PAS- Sr Bay \$50
- PAS-SR Black \$50
- PAS-dapple grey \$50
- PAM-dapple grey \$50
- PAM-Mahog. Bay \$50
- PAF- dapple grey \$35
- PAF-Mahog. bay \$35
- Cantering Welsh Pony- SR D.G.-red braids \$100
- The Black Stallion/Alec in box w/cellaphane \$35
- USET Team- Sr in original box \$50
- Cips \$40
- Hobo \$30
- Polo Pony \$30
- ASB Weanling- Liver Chest. 1 sock \$60
- ASB Weanling Liver Chest. 3 socks \$60
- Classic QH Family in box \$15
- Classic Arab Family in box \$15
- Classic Arab Family SR Set \$25
- Grazing Mare Black \$90
- Grazing Foal Black \$75
- Grazing Mare-Bay \$70
- Grazing Foal- Bay \$30
- Grazing Mare- Palo. \$60
- Grazing Foal- Palo. \$40
- Lady Phase- Sorrel \$65
- Lady Phase-Buckskin \$80
- Standing Stock Foal-Buckskin \$20
- Scratching Foal- Red Roan-\$80
- Lying Foal- Red Roan \$70
- Running Foal- Red Roan \$130
- Running Stallion- Red Roan-\$90
- Running Mare- Red Roan- \$85
- Fighting Stallion- Gloss charcoal \$80
- Family Arab Set-woodgrain \$85/set
- Clydesdale Mare- SR Flocked Bay \$55
- PAS- SR Flocked Bay \$60
- Western Pony-gloss black/white pinto \$20
- Western Pony- gloss tan/white pinto \$30
- Western Pony- gloss light palo. \$25
- Bassett Hound-\$20
- Boxer-gloss w/choker \$25
- Running Stallion- Black Appaloosa \$25
- Running Stallion-Bay \$30
- Running Stallion- Alabastor \$80
- Belgian Bay SR \$25
- Belgian Smoke (app pattern) SR \$25
- Stock Horse Mare SR Grey App \$25
- Stock Horse Stallion SR Grey App \$25
- Standing Stock Foal Grey App w/star \$25
- Standing Stock Foal Grey App \$25
- Running Stock Foal- grey App \$25
- Appaloosa Gelding- Sorrel \$35
- QH Gelding Buckskin \$35
- QH Gelding SR Sorrel \$30
- QH Gelding Gloss Bay \$100
- TB Mare/Foal Set \$40
- TB Mare/Foal Set Sr Pintos \$70
- Clydesdale Stallion- SR True Bay \$25
- Clydesdale Foal- SR True Bay \$20
- QH Yearling Palo. \$40
- QH Yearling Liver Chest. \$40
- Elephant \$25
- Yellow Mount- Newer version \$20
- Morganglanz- \$30
- Western Saddle Set- \$15
- Classic QH Set- SR Brown App \$25
- Old Mold Stock Foal-Black App \$20
- Old Mold Stock Foal- Brown App \$20
- Stock Horse Stallion- bay \$20
- Stock Horse Stallion- "SAM I AM " SR w/papers \$75
- Stock Horse Stallion-bay pinto \$25
- Stock Horse Stallion-Alabastor SR\$40
- Shire dapple grey \$65
- Shire SR Palomino \$80
- Shire SR Bay \$80
- Shire SR Black \$80
- Shire SR Solid Grey \$80

Karen Davis 409 Whitpain Hills Center Square, PA 19422

**Breyers Continued:**

Running Mare- SR Solid Bay \$30  
Running Foal- SR Solid Bay \$30  
Black Beauty- SR Solid bay \$30  
Adios- SR Palo. \$25  
Adios SR Dapple grey \$25  
Stock Horse Mare- Sorrel \$25  
FAF- gloss white \$10  
Lady Roxanna \$15  
Black Foundation Stallion \$25  
5 Gaiter- older sorrel \$25  
Running Stock Foal- bay \$15  
San Domingo-Medicine Hat \$25  
Foundation Stallion- SR White \$25  
Rocking Horse- SR Flocked Lavender-\$80  
Clydesdale Stallion- SR Dapple grey \$20  
Mustang-gloss alabaster \$100  
Fury-gloss black \$50  
Fury-gloss black pinto\$100  
Stud Spider- SR Bay \$75  
Fighting Stallion- Gloss Palo. \$80  
Western Horse-gloss palo. \$35  
Western Horse-gloss black pinto \$35

Several Family Arab Sets- send want lists.

HARTLANDS (Not Stevens)

Rearing Mustang- have two- both diff. shades of woodgrain.  
Both are mint w/felt pads on hooves. \$35 each.  
Pinto Mare-standing-some rubs \$10  
Standing Foal-Arabian- Doeskin \$10  
Walking Foal- unpainted grey- 10  
4" trotting horse- brown w/black western tack \$12  
Polo Pony- rare buckskin rubs on one side \$20  
Rearing Mustang- white -yellowed but nice \$12

LEFTONS

Walking Hunter-brown-braided m/t \$15  
QH Foal- Palo. \$8

GOEBAL

Gloss white sitting Persian \$10  
Gloss brown begging rabbit \$10  
Gloss walking pony- brown pinto \$20

HAGEN RENAKERS (all DW)

DW Sitting Kitty Gloss Siamese \$30  
DW Sitting Kitty Gloss white/green eyes \$30  
DW Squatting Kitty Gloss Siamese \$25  
DW Begging Kitty (on 2 hind feet) matte \$30  
DW Hen- gloss white \$25  
DW Little Red Hen Holding Flour Sack \$60  
DW Piglets (2) both gloss \$12 each  
DW Mama Pig gloss and matte \$30 each

HAGEN RENAKERS (all DW)

Mama Duck #Gloss \$30  
Papa Duck Gloss \$40  
Baby Rabbits- have all 3 molds in  
gloss/matte brown, white \$10 each.  
Mama Rabbit-gloss brown \$20  
Papa Rabbit Gloss brown \$20  
Baby Boy Quail-\$15  
Baby Girl Quail \$15  
Ducklings- set of 2, matte and  
gloss- \$12 each  
Sitting Mouse-Matte dark grey \$25  
Calf-gloss brown \$30  
Calf Matte black/white\$30  
Cow-matte black /white\$60  
Sitting Elepahnt #147 Gloss \$50  
Standing Elepahnt# 146 Gloss \$50  
Buck #52 Horns broke at base but  
are included. \$25  
Doe # 51- matte and gloss \$25 each  
Fawn #555 gloss and matte \$20 each  
Fawn # 558 Matte \$20  
Young Unicorn #680 Lying- \$50  
Young Unicorn #680 turning- horn is  
white not gold! \$50  
Little Boy Mouse gloss \$20  
Little Girl Mouse-broken tail, piece  
missing \$10  
Calf- gloss brown- 4 rep. \$12  
Cow-Gloss brown \$50

BESWICK

Beautiful rept. Conn. Series Arab  
off base by Elisabeth Bouras.  
dapple bay w/black hair mane and  
tail. \$100

Traditional Size Wooden Bridge-  
Handmade/stained by Jim Behning. ✓  
Has won several trail classes  
\$35

KAREN DAVIS  
409 Whitpain Hills  
Center Square, PA 19422

Please add postage to prices.

Send want lists. I Have others  
available.

**FOR SALE:** The following horses are for sale. Priced fairly well. Mary Keller, 20049 Dorothy Street, Canyon Country, CA 91351. Prices do not include UPS charge. SASE when inquiring, please. All repaints by me unless otherwise stated.

**ABBREVIATIONS:** m/t/l - mane, tail, legs; ftr's - few tiny rubs; tr's - tiny rubs; sr's - small rubs; S.R. - Special Run; Fac flws - factory flaws; r/r/h - repainted, remade, haired; LB - Little Bits; SM - Stable Mates; C.Ar. - Classic Arab; C.An. - Classic Andalusian; C.QH - Classic Quarter Horse; o/f - Original Finish.

1. Overo Paint - rep. red chestnut over orig. pattern. Different from o/f pattern. Pretty! \$20.00
  2. Smokey - m/t/l rep black. Socks and blaze added. Fac flws. \$10.00
  3. Adios - r/r/h dark red chest by Becky Choquette. Photo show quality. \$20.00
  4. Stock Horse Family - o/f S.R. grey Appaloosas. Foal is standing mold w/star on forehead. Stallion and Mare have ftr's. \$50.00 for set only.
  5. Action Stock Foal - o/f grey App. MINT IN BOX!! \$15.00
  6. Stock Horse Family - o/f S.R. buckskin. Light grey shadings on all. Foal has tr's and fac. flws. \$50.00 for set only.
  7. Action Stock Foal - o/f sorrel. MINT IN BOX. \$15.00
  8. C.QH Family - o/f darker color. Fac. flws. \$10.00 for set only. All have rubs.
  9. Running Mare and Foal - o/f/ bay. Mare is old and semi-gloss. Foal has broken ear. Both have tr's. \$15.00 for set only.
  10. Hobo - o/f w/stand. sr's and fac. flws, broken ear. \$10.00
  11. Mustang - o/f buckskin, sr's. \$10.00. 15 years old.
  12. Rearing Stallion - o/f bay, ftr's. Good Condition. \$8.00
  13. Rearing Stallion - rep black/white pinto by ??? \$4.00. Needs new paint.
  14. Stud Spider - r/r/h red roan chestnut blanket App by Julia Gronroos. Photo show quality. \$20.00
  15. C.QH Foal - rep grey App. \$4.00. Loud color.
  16. Yellow Mount - o/f older color. Color excellent! ftr's. \$20.00
  17. Stud Spider - rep in black enamel over orig pattern. \$12.00
  18. Fighting Stallion - disc. white, sr's, slightly yellowed. \$15.00
  19. Cantering Welsh Pony - rep/haired black/white pinto. Photo show quality. \$15.00
  20. Black Foundation Stal - o/f black. Good condition. \$15.00
  21. Azteca - rep/rem prospect. Waiting for adventurous person! \$10.00
  22. LB QH - rep palomino. Nice color! \$6.00
  23. C.Ar. Foal - rep to look like "Stormy." tr's. \$4.00
  24. Appaloosa Perf Horse - S.R. grey App, fac. flws. \$30.00
  25. San Domingo - o/f darker color. 1st year made! fac. flws. \$15.00. Sl. yellow.
  26. Hong Kong plastic - Classic sized foal. Rep red chest. Four socks & blaze. \$3.00
  27. PAM - o/f dap grey. Old pattern, slightly yellowed. PERFECT! \$25.00
  28. Running Stallion - o/f black App. sr's, slightly yellowed. \$20.00. 1st yr made.
  29. C.Ar. Stal - r/r/h flea-bitten grey w/shading. Mouth opened. Good show horse! \$35
  30. Stock Horse Foal - o/f S.R. buckskin. Standing Mold. Fac. flws. \$12.00
  31. PAF - o/f dap grey. Old color, slightly yellowed, fac flws. \$5.00
  32. PAF - o/f white. Fac flws, yellowed. \$7.00. matte finish
- THE FOLLOWING ARE FOR SALE AT \$30.00 FOR ALL OR FOR THE INDIVIDUAL PRICES.**
33. SM Swaps - rep black App w/blaze and sock. \$3.00
  34. SM ASB - rep black/white pinto w/blaze and two high stockings. \$3.00
  35. SM TB Mare - rep chest roan w/blaze and 3 socks. Pretty color! \$3.00
  36. SM TB Mare - rep black w/blaze. \$3.00
  37. SM Native Dancer - rep darker grey w/black pts & 2 socks. \$3.00
  38. SM Morgan Mare - rep black w/blaze. \$3.00
  39. SM Seabiscuit - rep black w/blaze and two socks. \$3.00
  40. SM Citation - rep black w/star and sock. \$3.00
  41. SM TB Mare - o/f bay. PERFECT! \$3.00
  42. SM Arab Stal - o/f white, slightly yellowed. Good condition. \$3.00
  43. SM Morgan Mare - o/f bay w/blaze and sock etched by razor. \$2.00
  44. SM Silky Sullivan - o/f chestnut. Only casualty in the '87 quake! Broken rear leg but still stands! \$1.00

# GOLDEN KNIGHTS STABLES

## **1989 SACRIFICE SALE**

CHERYL MUNDEE, 1025 SHEFFIELD PLACE, CA 91360

Must sell to pay bills. All are in very good condition except noted and may be paid in payments, but model will be held until checks clear. No pictures, except for RR models. (805) 496-0299 NO COLLECT CALLS.

- |                              |                                       |
|------------------------------|---------------------------------------|
| Justin Morgan (\$14)         | Western Prancer (\$100)               |
| Sherman Morgan (\$15)        | black pinto, chip ear, glossy         |
| Stretch Morgan (\$20)        | Western Prancer - palo (\$20)         |
| black, star                  | Western Prancer - bay (\$30)          |
| Midnight Sun (\$30)          | Western Prancer - blk appi (\$30)     |
| black, red ribbons           | Stud Spider - blk appi (\$20)         |
| Buckshot (\$14)              | Stud Spider - bay (\$50)              |
| Foundation Stall SR (\$20)   | QH geld - chest (\$25)                |
| brown, white m/t             | QH geld - brn appi (\$20)             |
| PAS - blk, white sox (\$20)  | Perfor Horse-grey appi blanket (\$30) |
| PAS - bay (\$20)             | Perf. Horse - chalk (\$30)            |
| PAS - chestnut (\$20)        | striped hooves, roan appi, nice!      |
| Trakehner - bay (\$40)       | Perf. Horse - chest appi (\$20)       |
| Trakehner SR, signed (\$40)  | QH yearling - brn app (\$15)          |
| chest, white sox JAH         | POA - leap (\$20)                     |
| Morganglanz (\$20)           | POA - brn appi blanket (\$18)         |
| Phar Lap (\$15)              | Stock Foal - brn appi (\$12)          |
| Running mare/foal (\$45)     | Stock Foal - blk appi (\$12)          |
| SR dap grey                  | Scratching Foal - blk appi (\$15)     |
| Running Stallion (\$40)      | Lying Foal - blk appi (\$15)          |
| SR sorrel, numbered          | Jasper the Hog - (\$8)                |
| Running Stallion (\$25)      | Elephant - grey, "chalky" (\$20)      |
| black appaloosa              | Pronghorn Antelope (\$50)             |
| Grazing mare/foal (\$60)     | Bear/cub - black (\$50)               |
| matching palomino            | Bear/cub - cinnamon (\$30)            |
| Belgian - black (\$25)       | Rocky Mountain Goat (\$40)            |
| Shire SR (\$25)              | Haflinger - box (\$30)                |
| dap grey, factory ear flaw   | Benji & Tiffany (\$30)                |
| CAS - unpainted (\$15)       | "goes to Rome", box                   |
| Shetland Pony - bay (\$15)   | SM Stable Set (\$20)                  |
| HR unicorn (\$15)            | cardboard, no horses                  |
| turning, no gold, one of the | Brenda Breyer Gift Set (\$50)         |
| last DW pieces.              | box, doll & horse                     |

\*\*\*\*\*

### **THE GREAT AMERICAN CATTLE CLUB**

WHERE YOUR CATTLE ARE THE MAIN ATTRACTION!

FUN, BI-MONTHLY NEWSLETTER!

AUTOMATICALLY TALLIED POINTS!

COWHORSES WELCOME TOO!

CHERYL MUNDEE, 1025 Sheffield Pl., Thousand Oaks, CA 91360

Partial Dispersal Sale - Prices include postage. Chinas and R/R's sent double boxed. No pix unless stated. For refund - less postage - return model within 10 days and state reason. SASE please with all correspondence or NO REPLY! Thanks. Karen Turner, 7350 Bulen Dr., Anchorage, AK 99507. (907) 344-8297. No collect. No calls before 9 a.m. please. All models excellent cond. unless stated.

Breyer

- |     |                                                                                                                    |            |
|-----|--------------------------------------------------------------------------------------------------------------------|------------|
| 1.  | USET Set - 1987 Xmas SR                                                                                            | \$25/set   |
| 2.  | Triple Crown Winners - 3 SR cl. TB's                                                                               | \$35/set   |
| 3.  | Legionario III - 1986 SR sorrel                                                                                    | \$30       |
| 4.  | Perf. Appy - sorrel/blanket                                                                                        | \$20       |
| 5.  | Belgian - 1985 SR "blue roan." 2 small FF neck/shoulder                                                            | \$18       |
| 6.  | Belgian - 1979 SR semi gloss dapple grey                                                                           | \$60       |
| 7.  | Family Arabs - 1982 SR light sorrel                                                                                | \$70/set   |
| 8.  | Phar Lap - 1988 SR bay, liver chest                                                                                | \$18/ea    |
| 9.  | 5-Gaiter - dapple grey, new                                                                                        | \$18       |
| 10. | Western Prancer - leopard appy, no saddle                                                                          | \$30       |
| 11. | Western Prancer - buckskin, no saddle VGC                                                                          | \$30       |
| 12. | Lying Foal - red roan                                                                                              | \$35       |
| 13. | Western Pony - <u>old</u> gloss honey palo. complete. lovely!                                                      | \$30       |
| 14. | Family Arabs - gl. alabaster, grey noses VGC                                                                       | \$75/set   |
| 15. | Shetland - gl. black pinto, gl tan pinto, VGC                                                                      | \$15/ea    |
| 16. | SB Stal - PAS/5 Gaiter head. RRH by Mary Sue Humphries. Med chestnut, <u>very</u> nice. Show pix.                  | \$40       |
| 17. | Arab Stal - trotting PAS, by Julie Froelich (1981). White/lt grey. Gorgeous. Insp pix                              | \$150 firm |
| 18. | San Domingo to canter, by Patty Rohlfing (1988). Blood bay - gorgeous also. Looks TB/QH. No pix but a sure winner. | \$90       |

Others

- |     |                                                                                                                         |          |
|-----|-------------------------------------------------------------------------------------------------------------------------|----------|
| 1.  | Hartland (old) 7" Appy family VGC                                                                                       | \$45/set |
| 2.  | Hartland (old) 9" TWH - lovely walnut WG                                                                                | \$35     |
| 3.  | Hartland (old) 11" SB - by Kelly Lowry to med dap grey, dk gr m/t. Beautiful mare! Pix/negs by Kelly.                   | \$60     |
| 4.  | Hartland (old) Weanling - sorrel. VGC                                                                                   | \$10     |
| 5.  | Stevens 9" TB - lt. dap grey (pearl)                                                                                    | \$20     |
| 6.  | Stevens 11" Arab - bay, dk. dap grey                                                                                    | \$35/ea  |
| 7.  | Lefton pinto m/f - very old, black overo                                                                                | \$30/set |
| 8.  | Josef Original Shetland family - 2 adults, 3 foals. 1 foal has 1 break (clean). Very cute - seldom seen. Pre-1970       | \$50/set |
| 9.  | Beswick Black Beauty adult - 1 broken foreleg (clean-almost no see)                                                     | \$35     |
| 10. | H-R Lippitt and Forever Amber - ca. 1970 chestnut. Exceptional color and mold detail. Both mint, matched. As pair only. | \$150    |

////////////////////////////////////

H-R HORSES FOR SALE OR TRADE

We have available at this time quite a few pieces, some old, some recent discontinued, some of the rare Special Run ones both in DW's and mini's. Write for full listing. Send long SASE, and if you have a sale/trade list of H-R's enclose it too.

Send to:

Denise Nelson  
7325 Larchmont Drive  
No. Highlands, Ca. 95660

////////////////////////////////////

Wizard's Vale Sale List  
January 1988

Supersedes all previous  
listings,

Send SASE with all  
inquiries, postage NOT  
included.



WIZARD'S  
V · A · L · E

Write to:  
Karen Y. Gerhardt  
51 Carnegie Ct.  
Middletown, NJ 07748  
(201) 671-8788  
FAX (201) 530-8578  
(9am-5pm mon.-fri. ONLY)

#### Hagen-Renakers

1. San Marcos 6" QH Family, GLOSS PALOMINO (special run of 25 sets only). All are mint, nice light palo with reddish shading. Set only: \$300.
2. San Marcos 6" QH Family, matte bay. All are mint, better detail than many of this mold. Set only: \$90.
3. San Marcos Large Zilla, gloss white. Mint cond. \$70.
4. San Marcos Donkey, matte grey, mint. \$35.
5. San Marcos 9" Amir Arab Stallion, gloss palomino, mint except for a very few cracks in glaze. \$90. Live show Res. Champ, EX detail.
6. DW Terrang, mint, nice tones in coloring. \$90
7. San Marcos Clydesdale, gloss brown. Very excellent detail, fine color/shadings, pink muzzle. \$90.
8. San Marcos Turning Unicorn. Glaze crackled, otherwise mint. \$25.
9. San Marcos 8" QH Mare. Superb, superb detail! Crisp and clean, matte bay. Great shading. Perfect condition. \$80.
10. WIZARD'S VALE REPAINT H-R: DW 6" Amir Arab Stallion, repainted only. Now a stunningly shaded chestnut with lighter mane & tail. Have halter pix for inspection. Could be shown as a Welsh/Arab cross, Arab, etc. Brand new and unshown/unnamed. \$60. Oops...forgot to mention he has two well-repaired breaks!

#### BESWICKS

1. TB "Imperial", disc. gloss dapple grey. \$40
2. TB "Bois Rouissel" very nice mold, bay gloss. \$40
3. TB "Bois Rouissel" gloss dapple grey. \$45
4. TB #1772, (same mold as Appy) gloss dapple grey, nice. \$40
5. Quarter Horse, this mold is disc. even in the UK. Give this mint cond. model a home! Brown Gloss. \$75
6. Xayal Arab Stal, gloss palomino, older model, better detail. \$40
7. Xayal Arab Stal, gloss bay, very nice. \$35
8. Mare, #1991, small (5 1/2"), bay gloss, perfect. \$30
9. Foal, #815, gloss palo, repaired ear, \$15
10. Foal, #1407 (often referred to as the Arab foal) gloss palo. \$25
11. Foal, #997, palomino gloss, perfect. \$40

#### MISC. BREYERS. ETC.

1. Breyer OLD sorrel 5-Gaiter, FACTORY eyewhites, very nice color with lots of lighter shadings, nothing like the more recent models. Not yellowed, excellent cond. \$35
2. Melbaware Harnessed Shire, English China Shire, rare steel grey with dapples on belly! Harness was refurbished a bit by me. VERY nice example of these horses. Steal at \$15.

(Wizard's Vale saleslist cont.)

REPAINT OFFERS

1. Breyer Cips Paso, will repaint ONLY (incl. seams sanded) any color desired, in airbrush, by Wizard's Vale. \$45
2. Breyer Classic Arab Stal, will repaint ONLY (plus seams sanded) any color desired, in airbrush, by Wizard's Vale. \$30
3. Breyer Indian Pony, will repaint AND HAIR (old mane/tail removed, seams sanded) any color desired, by Wizard's Vale. \$60
4. Breyer Clas. Arab Mare, will remake off hind leg to proper trot, remove m/t, hair, and repaint to any color desired, by Wizard's Vale. \$65

The above can be completed fairly quickly, please write w/SASE for a reply, for acceptance of your color choice, etc. Sample pix of WV work available, upon request.

-----  
**MODEL HORSES BY LAURIE JENSEN - - WE (!!) WISH EVERYONE A HAPPY NEW YEAR!**  
Many thank-you's to y'all who made my 1988 the best business year ever! My '89 (new) horses are proving to be better than ever due to the gracious and patient help of Julie Froelich and Kathleen "Preggers" Moody! Thanks for the advice and encouragement. SALES LIST OF LAURIE JENSEN, 32891 CALLE DEL TESORO, SAN JUAN CAPISTRANO, CA 92675. ALL REMAKES ARE BY MYSELF AND ARE NEW AND UNSHOWN. THEY COME WITH TWO NICE HALTER PICTURES. THEY ARE GUARANTEED TO YOUR SATISFACTION, AS ARE ALL MY CUSTOM REMADE HORSES. ADD \$3.00 POSTAGE FOR EACH HORSE. TRADES CONSIDERED FOR REMAKES BY FROELICH, ROSS, OTHERS...PLEASE SEND INSPECTION PIC. A COUPLE OF THESE ARE ALMOST DONE SO THEY DO NOT HAVE PIX YET. TERMS AVAILABLE.

**CRYSTAL RAIN - - PAM r/r/h w/head turned and neck arched. She is painted a light dapple grey with some fleabiting, similar to my champion mare "Silver Rain" (seen in MHG). Exquisite face, white hair m/t. Breathtaking. \$100 FIRM.**

**CISCO PIKE - - SHS r/r/h w/head tucked. Repainted a detailed black-bay overo paint. Probably the best paint I've done so far. \$89.00**

**MONIETTE - - CAM r/r/h w/head turned more, neck arched in playful way. Detailed head, painted a lovely rose grey w/mixed m/t. Refined, beautiful mare. \$69.00**

**NIGHTRAVEN - - Friesian trotting on base. Should be done by end of Feb. This stallion is made from a 5-Gaiter, trotting with style and flash. Jet black, no white. Thick black hair mane, tail and feathering on legs. One of a kind. (Nobody wants him, FINE. I will keep him!) \$225.00**

**STONEHILL DANICA - - Lady Phase r/r/h stretched Morgan mare. Head up, turned. Eyes, facial detailing done. Light chestnut w/creamy flaxen m/t. Some dappling. GORGEOUS. \$200.00**



(Laurie Jensen , cont.)

**PANORAMIC PAM - - Lady Phase repainted and haired to black and white semi-leopard Appaloosa, similar in color to "Scandinavian Sun," pictured below, and Diane Jenkin's Champion "Roulette." \$75.00**



**"Scandinavian Sun," created for Ms. Mindy Binkley.**

**OTHER HORSES IN THE WORKS. SEND LSASE FOR MY NEXT PRODUCTION SALE.**

**TRADE (WANT) LIST: I AM LOOKING FOR THE FOLLOWING HORSES FOR REMAKING... CAM, CAS, CAF, SHS, SHM, SHF, PAS, PAM, PAF, CLASSIC TB'S, SECRETARIAT, JOHN HENRY, YELLOW MOUNT MOLD, HANOVERIAN, TRAKEHNER, MORGANGLANZ, STRETCH MORGAN, HAFLINGER, BELGIAN, CLYDE MARE, LADY PHASE MOLD, S GAITER, SMOKY, STUD SPIDER, OTHERS. SEND MIST OF WHAT YOU HAVE.**

**ALSO NEED THESE IN GOOD SHAPE FOR MY COLLECTION: ANY HAGEN-RENAKERS ESPECIALLY 9" ARABS AND OLDER SAN DIMAS AND MONROVIA. SEND LIST OF WHAT YOU HAVE.**

**NEED IN GOOD SHAPE: CURRENT BAY STRETCH MORGAN, OLD MOLD GLOSSY BAY PROUD ARAB MARE IN EXCELLENT CONDITION ONLY, NEW PA FAMILY IN ROSE GREY, NEW FAS IN LIGHT BAY, NEW TRAK IN GREY, GLOSSY CHAR RUNNING STALLION, OTHERS. SEND LIST OF WHAT YOU HAVE.**

**ALSO FOR SALE: CANTERING WELSH PONY - Chestnut, no ribbons...\$35.00**

**H-R Glossy palomino 9" Zara. Repaired back leg & tail. \$70 o/b/o**

**H-R Matte buckskin MetalChex. Repaired ear & tail. \$175 o/b/o**

**FOR SALE** - - Karen Perkins, 131 Murray St, Chula Vista, CA 92010. Please add \$3 for UPS - thanks. Returns: Let me know within 7 days and we'll work something out.

1. SR lt chest. FAS \$20
2. SR white Stock Stallion \$20
3. SR chest Trakehner \$40
4. SR black San Domingo \$35
5. SR lt bay CAF \$10
6. SR rose grey Johar \$15
7. SR chest. Indian Pony \$15
8. SR solid face El Pastor \$20
9. SR flocked palo Run Mare \$25
10. SR flocked palo Run Foal \$15
11. CHALKIE black st. Morgan \$40
12. Galiceno 1 rub \$10
13. Stand Stock Foal buck. \$5
14. Stand Stock Foal blk pinto \$5
15. Stand Stock Foal grey app, star \$5
16. lt smoke Run Mare \$40 MINT
17. smoke Run Foal \$15
18. red roan Scratch Foal \$40
19. buckskin Lying Foal \$15
20. lt gloss dap Run Foal \$20
21. gloss dap Run Foal \$15
22. 3 spot Overo Paint \$20
23. 3 spot Overo Paint pink stain \$10
24. semi gloss bay PAM \$15
25. matt bay PAM \$15
26. bay PAS mint \$20
27. factory goof unfinished PAF \$5
28. matte white PAM \$15
29. gl white old PAF repaired tail \$5
30. matte white PAS \$15
31. dark dap PAF old color \$5
32. bay Grazing Mare MINT \$25
33. 1979 semigloss dap Belgian MINT \$40
34. black App Scratch Foal \$5
35. Justin Morgan bay \$15 MINT
36. dap grey 5-Gaiter MINT \$20
37. Hobo, no stand \$5
38. Polo Pony, no stand \$5
39. Adios, tiny rubs \$10
40. buckskin Lying Foal \$15
41. chest. Belgian \$20
42. chest. TB Foal \$5
43. Appy Indian Pony, dark \$15
44. gloss Hereford Bull walking \$25
45. black pinto Stock Stal, old, 1 sock \$20
46. gloss white Mustang, yellow stains \$75
47. ASB Wnlg liver chest \$40
48. liver chest QH Yrlg \$15
49. old bay bald face St. Morgan \$40
50. CAF's chestnut \$5 each
51. dapple member of USET \$5
52. Jumper/fence 4 sox no black on legs \$15
53. Classic Must Foal chest \$3
54. Fury black pinto touched up \$40
55. palo rearing pony rubs \$5
56. Classic QH Foals bay, chest \$4 ea
57. palo Grazing Foal \$5
58. Stock Stal br. appy \$10
59. App QH Yrlg large blanket \$10
60. Clydesdale Mare, chip ear \$5
61. old gloss white FAM MINT \$20
62. gloss palo FAF 1 rub \$5
63. gloss bay FAF \$8
64. Clydesdale Foal \$5
65. gloss palo West Horse rubs \$5
66. matte Appy FAF \$8
67. Clydesdale Mare \$8
68. tan West Prancer saddle \$3
69. orig old 1969 catalogs \$1 ea
70. old tooled west saddle/bridle \$25 set
71. Muritus copy of CAM, br. \$15
72. OLD REAL HARTLANDS  
bay Polo Pony eye whites \$30  
bay 7" ASB Mare cp ear \$15  
4" std brown H/R series \$5  
4" pranc wt H/R series \$5  
4" Grazing Mare plum color \$5
73. SR Dapple grey CAS \$35



**\*\*FLASH\*\*** Karen Grimm reports that the bay Running Stallions (overrun of JAH special run) are in! They'll be shipped ASAP.

**GOLDEN KNIGHTS STABLES**

**REPAINT/REMAKE HORSES**

CHERYL MUNDEE, 1025 SHEFFIELD PLACE, THOUSAND OAKS, CA 91360

Send \$1.00, refundable, for pictures, and PLEASE return them as soon as possible so that others may look at them. Postage on models not included. Models will not be held without, at least, 25% down. All are LIVE SHOW quality and all are going up for sale reluctantly, but must cut down on my showstring. Sorry, no trades at this time. PLEASE HELP! I will take payments, but must be completely paid for within SIXTY days, or all money will be forfeited. I may also accept reduced offers.

- ELECTRIC POWER - '85 palomino overo Paint mare. #67 rrh by Jill Weisz. Very beautiful shadings, glass eyes. Daughter of Out For Power. (\$50)
- WEST COAST DIAMOND - '85 chest. overo Paint stallion. SHS rrh with head lowered by K. Maestas. (\$70) Son of Out For Power.
- DQ'S GLORY BOUND - 10 mos sorrel tovero Paint filly. Action foal rrh by Linda Leach. Nicely repainted/haired! Daughter of Out For Power. (#25)
- FLY 'N TYE - '80 chest. tobiano Paint mare. Classic Silky Sullivan repaint/string m/t by Lynn Baum! Pretty shadings! (\$20)
- FUTURE FORTUNE - 14 yr palomino QH gelding (SHS) rrh Carla Clifford. Gorgeous color! Was going to add white, but... (\$80)
- BONNIE - 9 mos chest tobiano filly. Suckling foal flocked, hrd by ? Really cute! Remade into a cute stance too (\$10)
- GYPSY QUEEN - '86 black leopard POA mare. Ginger BHR repaint. (Karen Grimm) Known for her "almost original finish look alike"! (\$20)
- LITTLE MATE - 6 mos grey blanket POA colt. Class. Andu. foal BHR rep. Foal of above mare. Really cute! (\$15)
- BANDO - 6 mos blk blanket POA colt. Sea Star BHR rep. Cute! Get all three POAs at discount for \$40!! (#10)
- TAFFY KISSES - '84 chocolate Miniature Horse. Merrylegs (?) pony from Black Beauty set. Light dapples (\$20)
- BHR repainted chestnut horse from USET set. Repainted buckskin.
- CLASSIC SILKY SULLIVAN - rrh by Carla Clifford. Head lowered, rep. chestnut, and shown as a 1/4QH 1/2TB gelding. Please buy! (\$15)
- STARDOM SENSATION - '74 black chestnut Morgan stallion. Our foundation Morgan stud. 1/2FAS 1/25-gaiter put together! Rep/hrd by Sue Guffey (\$50)
- LAS VEGAS DIAMOND - '84 black pinto stallion
- DIAMOND DOMINO ' '83 blk pinto mare
- DIAMOND DICE - 5 mos blk pinto filly
- SAS TENDER EXPRESSIONS - sorrel Arab mare. PAM rrh Eddie Gonzales. Unshown, beautiful detail, but not into Arabs! (\$80)
- BHR REPAINT PHAR LAP - rep. light bay. (\$40)

} Classic mustang family rrh Maestas Set #90\*

I will take payments, but must be completely paid for within SIXTY days, or all money will be forfeited. NO TRADES accepted.

OUT FOR POWER - 1983 palomino overo Paint stallion. A proven LIVE SHOW and photo show Grand Champion. Many Horse of the Year awards. ribbons. Adios rrh by the famous Sue Guffey. VERY reluctant to sell, but he will be a Champion in your stables with over 200 excellent indoor pictures by Sue Guffey. Wanted to show in 1989 but must sacrifice. \$250 FIRM. I have the right to pull OFP from this list anytime, or decline offers.

\*\*\*\*\*

G.A.C.C. is growing but we  
Still NEED YOU! (only \$3<sup>00</sup>/yr!!)

Hi Everybody!



Here's my latest list of beautiful models at terrific prices! I just know you're going to find something you can't live without! Please include \$2.00 per model, but not more than \$6.00 for postage, I'll pay for the rest. Money back guarantee if you're not satisfied. Model must be returned within 10 days, and in condition stated. Please make check or money order out to Debbie Buckler, 1294 Hagen RD., Napa, California, 94558-Phone: (707)224-9506 (no collect calls, please!). Sometimes I'll trade, for models I need-the new 89's and Hartlands, and some repaint prospects. Happy Hunting! And thanks for reading this ad!

1. BIG HORN RAM-Lt. Brown, mint cond, except for professionally repaired horn tip- \$30.00
2. HERFORD BULL-Glossy, walking, no halter, gorgeous cond. looks like china!-\$30.00
3. WEST. PRANCER-Leopard app., excellent cond. no tack, has reins, PRETTY!-\$20.00
4. Q, H. "GELDING"-Chestnut app., with halter, excellent-\$28.00
5. PROUD ARAB MARE-Brown bay, odd color, overall good cond, matte-\$12.00
6. FAM. ARAB STALLION-Glossy coffee bay with eyewhites, very old model, slight yellow-\$12.00
7. PROUD ARAB STALLION-Semi-gloss brown bay, Very good condtion \$15.00
8. GRAZING FOAL-Bay, very nice, pretty little guy-\$10.00
9. CLASSIC ARAB FOAL-Palomino, near mint, \$5.00
10. RUNNING STALLION-Black appaloosa-few scoffs, but not too bad-\$15.00
11. FAM. ARAB STALLION-Matte alabaster, white, very nice, sm. tail scuff-\$15.00
12. FAM. ARAB FOAL-Matte charcoal, few rubs, easy touch-up, cute!-\$8.00
13. FAM. ARAB STALLION-Matte bay-few rubs, not bad, very pretty model-\$10.00
14. GRAZING FOAL-Palomino, near mint, getting harder to find!-\$10.00

15. OLD TIMER-Old alabaster/grey-overall very nice cond.-no hat  
\$18.00
16. SHETLAND PONY-Glossy palo.pinto,light orange color,excellent  
cond.-\$20.00
17. MUSTANG-Older,dark buckskin-one scuff-\$12.00
18. FAM.ARAB FOAL-Glossyalabaster,dark grey mane & tail,very good  
cond.-\$8.00
19. FAM.ARAB FOAL-Glossy alabaster,Light grey mane & tail-very  
good cond.-\$8.00
20. SMALL REARING STALLION-Older matte palo,slight yellow-\$10.00
21. FAM.ARAB FOAL-Glossy dark bay,has a few rubs,but too pretty  
to repaint!-\$5.00
22. FAM.ARAB FOAL-Glossy palo,one small dark mark,otherwise mint,  
extreamily pretty!-\$9.00
23. FAM.ARAB FOAL-Glossy charcoal-yellowed,but still very nice-  
\$7.00
24. WEST.PONY-Alabaster,no yellow,small ear chip,minor rubs,no  
tack-\$8.00
25. WEST.PONY-Black pinto,ear chip,minor rubs,slight yellow,no  
tack-\$8.00
26. WEST.PONY-Black pinto,very nice cond.replaced leg,no tack-  
\$8.00
27. FAM.ARAB STALLION-Glossy alab.,Very good cond.except for a  
well-repaired tail break-\$12.00
28. WEST.PRANCER-Old palomino,no saddle,good shape-\$10.00
29. GRAZING MARE-Brown bay,with black stockings-mint cond.-\$30.00
30. GRAZING MARE-Red bay,with grey stockings-mint cond.\$30.00
31. WEST.PONY-Glossy orange palomino-super pretty,mint,but no tack  
\$15.00
32. HOBO-New in orig.box,with stand,tiny ear chip,tiny nose rub-  
\$25.00
33. BELGIAN-Old chestnut,lovely and near mint-\$30.00
34. FAM.ARAB STALLION-Glossy alabaster,excellent ,very white-\$15.00
35. FAM.ARAB STALLION-Matte grey app.excellent cond.-\$15.00

36. TRAKEHNNER-Old dark bay-overall very good shape-\$25.00
37. THOROUGHBRED MARE-From set, chestnut, very nice cond., sweet old mare-\$20.00
38. FIGHTING STALLION-Glossy charcoal, couple sm. marks, otherwise gorgeous-\$50.00
39. LYING FOAL-Buckskin, very good cond.-pretty little guy-\$18.00
40. CANTERING WELSH PONY-Light chestnut with flaxen mane and tail few tiny scuffs, lovely-\$28.00
41. WEST PRANCER-Smoke, slight yellow, small rubs, has chain reins, easy touch-up.-\$12.00
42. ADIOS-Original old dark bay, lovely model, fact. paint flaw on hind sox, otherwise mint-\$30.00
43. BREYER POLO PONY-Rare find-bay, overall very nice-Stand has been repainted and is warped, but still supports model-\$25.00
44. WEST PONY-Chest. carmel pinto-no tack, few tiny rubs-neat old model-\$18.00
45. FURY-Old dark palomino-no tack, tiny rubs, short seam split, very pretty-\$20.00
46. GRAZING MARE-Bay, very good cond.-\$25.00
47. GRAZING FOAL-Bay, very good cond.-\$10.00
48. HONG KONG DRAFTER-Classic size, very nice, with removable harness-\$5.00
49. HARTLAND-9"Horse & rider series, Roy Rogers and Trigger-many scuffs, no tack, but good restorable cond. Trigger is the standing/walking palomino-\$30.00
50. HARTLAND-9"Horse & rider series, Wyatt Erp and Tombstone-rider pretty good cond., horse, many scuffs. No tack Tombstone is the standing/walking bay-\$30.00
- REPAINTS-These are done by me, with an airbrush, and are really nice. They're a beautiful blue roan, exactly like my real Peruvian Paso.
- PROUD ARAB FAMILY-Mare, Foal, Stallion-exquisite set -\$40.00
- RUNNING FAMILY-All disc. molds, stallion is orig. running stallion, exciting group-\$40.00
- ADIOS-Solid black with two white socks-Statelty and handsome-\$18.00

LEGIONARIO-Black mane and tail, points and lightly 'dusted'-grey-  
Gorgeous!-\$20.00

-Sorry, no photos, but all these guys are live show quality, and  
remember-money back if you're not delighted!

-NOTE-   -NOTE-   -NOTE-

ALL MONEY MADE FROM THE HARTLAND HORSE AND RIDER SETS, WILL GO  
DIRECTLY TO SUPPORT THE NAPA VALLEY LIVE SHOW!

## BREYER POLLED COWS

We are offering Special Run Breyer Cows hornless.  
This is not a limited run, but open stock to dealers, so we  
will not know how many have/will be made. These are  
offered in the same five breeds the cow was originally  
offered in; Holstein (blk & white); Brown Swiss (brown)  
Jersey (golden); Ayrshire (red & white), and Guernsey  
(Palomino & white).

BHR priced at \$15.00 each plus \$195 UPS;  
OR THE SET OF FIVE FOR \$75.00  
INCLUDING UPS!!!!

Limited quantity on hand. Please order quickly.



### BLACK HORSE RANCH

Thoroughbred Breeding & Racing Stock  
10400 Johanna Ave., Shadow Hills, CA 91040





**BLACK HORSE RANCH**

10400 Johanna Ave., Shadow Hills, CA 91040

**NEW MODELS FOR 1989**

**BHR price**

|     |                                              |         |
|-----|----------------------------------------------|---------|
| 312 | Montana Mountain Goat                        | \$8.00  |
| 450 | Rugged Lark, QH stallion                     | \$13.00 |
| 455 | Roy, Belgian Stallion                        | \$15.00 |
| 801 | Shetland Pony, bay & white pinto             | \$9.75  |
| 802 | FADE TO GREY, grey TB owned by BHR           | \$14.00 |
| 803 | Galloping TB, dapple brown                   | \$13.75 |
| 804 | Proud Arab Stallion, dapple rose grey        | \$13.00 |
| 805 | Proud Arab Mare, dapple rose grey            | \$13.00 |
| 806 | Proud Arab Foal, dapple rose grey            | \$7.75  |
| 807 | Stock Stallion, brown/white Paint            | \$13.00 |
| 808 | Stock Mare, brown/white Paint                | \$13.00 |
| 809 | Stock Foal, brown/white Paint                | \$7.75  |
| 810 | Stk.Action Foal, red leopard                 | \$7.75  |
| 811 | Majestic Arab stal, fleabit/red roan         | \$14.25 |
| 812 | Prancing Arab Stallion, palomino             | \$14.25 |
| 813 | Thoroughbred Mare, black                     | \$14.25 |
| 814 | Family Arab Stallion, light bay              | \$14.25 |
| 815 | Family Arab Mare, light bay                  | \$14.25 |
| 816 | Family Arab Foal, light bay                  | \$8.00  |
| 817 | Abdullah, light dap grey Trakehner, '89 ltd. | \$18.25 |

LITTLE BITS (not due until March 89) \$5.50 each(6 new colors)  
 STABLEMATES (not due until March 89) \$3.30 each(8 new colors)

**ADD UPS CHARGES FROM ORDER FORM**

**CALIF. RES. ADD 6 1/2% TAX**

**B  
R  
E  
Y  
E  
R  
  
M  
O  
D  
E  
L  
S**

**REGULAR RUN BREYERS**

| #   | ITEM             | PRICE   |
|-----|------------------|---------|
| 19  | Stormy           | \$7.50  |
| 20  | Misty            | \$9.75  |
| 23  | Shetland Pony    | \$9.75  |
| 47  | Man 'o War       | \$14.25 |
| 57  | Western Horse    | \$16.50 |
| 65  | Justin Morgan    | \$13.00 |
| 66  | Stud Spider      | \$13.00 |
| 68  | Legionario III   | \$13.00 |
| 70  | Brahma Bull      | \$14.25 |
| 74  | Polled Hereford  | \$14.25 |
| 75  | Longhorn         | \$14.25 |
| 76  | Buffalo          | \$14.25 |
| 77  | Elk              | \$14.25 |
| 78  | Moose            | \$14.25 |
| 80  | Clydesdale Stal. | \$16.25 |
| 83  | Clydesdale Mare  | \$16.25 |
| 84  | Clydesdale Foal  | \$9.75  |
| 90  | Phar Lap         | \$13.25 |
| 117 | 5 Gaiter Pinto   | \$13.75 |
| 118 | Mustang          | \$13.75 |
| 140 | Wing Commander   | \$14.25 |
| 206 | Old Timer bay    | \$19.50 |
| 355 | Jasper the Hog   | \$8.00  |
| 360 | Charolais Bull   | \$14.25 |
| 365 | Black Angus Bull | \$14.25 |

|      |                  |         |
|------|------------------|---------|
| 411  | Arab Stal. Flea. | \$14.00 |
| 416  | Spanish Barb     | \$14.00 |
| 426  | Arab Mare Chest. | \$14.00 |
| 430  | Sherman Morgan   | \$14.00 |
| 435  | Secretariat      | \$14.00 |
| 445  | John Henry       | \$15.50 |
| 601  | Kelso            | \$8.00  |
| 602  | Man 'o War       | \$8.00  |
| 603  | Silky Sullivan   | \$8.00  |
| 604  | Swaps            | \$8.00  |
| 605  | Terrang          | \$8.00  |
| 606  | Ruffian          | \$8.00  |
| 702  | Stretched Morgan | \$14.00 |
| 703  | Grey Appaloosa   | \$14.00 |
| 704  | TWH blood bay    | \$14.00 |
| 705  | QH dun           | \$14.00 |
| 709  | Fight. Stallion  | \$15.50 |
| 710  | Red Roan         | \$14.00 |
| 3035 | USET set         | \$21.25 |
| 3040 | Black Beauty set | \$23.00 |
| 3045 | QH family        | \$16.25 |
| 3055 | Arab family      | \$16.25 |
| 3060 | Andalusian set   | \$16.25 |
| 3066 | My First Pony    | \$22.25 |
| 3123 | Deer Set         | \$21.25 |
| 3447 | Cow/calf set     | \$17.50 |
| 3940 | Cooler set (2)   | \$6.50  |



# WANTED



WANTED: Lady Phase models suitable for r/r, H-R Donkey jennet w/foal for rep. and H-R Mules for rep. H-R's can be broken w/pieces included. Thanks. Nancy Olson, Rt. 1, Box 25, Fairfax, MN 55332

WANTED: Old back issues of The Model Rag for sale. Cathe Descheemaker, P.O. Box 1088, Pine, AZ 85544

WANTED: SR Dapple Grey Phar Lap and Sam I Am. Also older Hartlands. Please send lists to: Liz Strauss, 2369 Tiffin Rd, Oakland, CA 94602

Dale & Mary Lou Schnickler, RR 1, Box 251, Liberty, IN 47353 (317)732-3578  
WANTED - BREYER - Woodgrain Fury, Woodgrain Proud Arabian Foal, Woodgrain Poodle, Woodgrain Elephant, Pink Elephant, Blue Elephant, Elephant Howdah, White Buffalo, Decorators, Special Runs and test colors. AMERICAN CHARACTER CO. Outlaw rider from old Ponderosa/Bonanza show.

WANTED: Information on foreign (European/British/Australian) model horse newsletters and magazines. Send addresses and subscription info (stamp refunded) to: Laurie Jensen, 32891 Calle del Tesoro, San Juan Capistrano, CA 92675

WANTED: Buckskin Lady Phase (bald face, PINK nose), liver chestnut Lady Phase, dapple & sorrel Phar Laps, old classic TB's and the charcoal and alabaster Azteca. Have a black Fury and a few others for trade only - - Laura Conaway, 1982 Calle Yucca, Thousand Oaks, CA 91360.

WANTED: Brown pinto Fury, Black FAM, Black West Horse, Palo Pinto West Horse, woodgrain QH Gelding. H-R Roan Lady, Love, Thunder, Heather, Mischief, Collies Bonnie & Gaylord in black/white. Border Fine Arts Welsh Pony Stallion. Many nice old Breyers, Hartlands & Beswicks for sale/trade. Lani Keller, 20049 Dorothy St., Canyon Country, CA 91351

Looking for beautiful lions, especially Beswick. Mostly want males. I will reimburse the stamp. Also Canterng Welsh pony, Trakehner for remaking. Reasonable prices please. I also would like to hear from any modelers especially in Alaska (Not you Karen!). Christine White, 229 Apt E., Beluga Ave., Ft. Richardson, Alaska 99505.

---

**WANTED:** LSQ R/R/H showhorses by J. Froelich, B. Zimmer, D. Prait, H-R 9" Zara in matte palomino and old H-R's (horses D.W and mini; Monrovia mini dogs and cats), some old o.f. Breyers. Breyers mint condition only please. Will refund stamp. **THANKS!** Karen Turner, 7350 Bulei Dr, Anchorage, AK 99507

---

**KAREN PERKINS WANT LIST - 131 Murray St, Chula Vista, CA 92010. WANT models in good cond. unless otherwise stated. However if you have one of these models in any cond, please let me know. With "Any Cond" models, broken is O.K., missing parts are O.K., rubs O.K. Cash paid or trade.**

1. Gloss dapple Belgian - ANY COND
  2. Palomino pinto Fury Prancer
  3. Old snap saddles for Fury, West Horse and Pony.
  4. Matte palomino pinto Shetland
  5. Trad. Black Beauty, rear sock ONLY
  6. ANY Chalkies
  7. ANY gloss bay PAM's and PAF's - ANY COND
  8. SR All black FAM
  9. Buckskin Run Foal
  10. Dapple grey Ruffian
  11. Lady Phase - NICE COLOR - brownish one
  12. Gloss White Mustang - PERFECT ONLY - rubs on grey O.K.
  13. Blaze face sorrel Shire
  14. Smokey BLACK LEGS, NO WHITE SOCKS
  15. Black pinto West Horse ALL BLACK TAIL, new condition
  16. Leopard App POA
  17. ANY AND ALL Stablemates - ANY COND
  18. VERY LIGHT Smoke Running Foal
  19. ANY unpainted
  20. Pearl plastics - ANY COND
  21. Bald face chestnut Canterng Welsh Pony PERFECT ONLY
  22. Old solid face bay Morgan - ANY COND
  23. Bay Stand Stock Foal - one sock
  24. Balking Mule - ANY COLOR OR COND
  25. ANY TESTS, GOOFS, or VARIATIONS
- ANY DECORATORS OR WOODGRAINS - OF COURSE - Especially Running Mare & Foal, Western Pony, Fury, Morgan, Belgian, PAM & Mustang. - ANY COND

# miscellaneous

s/d lists, repainting services, etc.

---

The Minnesota Model Horse Association is looking for a few good members! (We'd prefer GREAT, but will settle for warm bodies). For information send SASE to: Sue Rowe, 373 Cimarron, Lake Elmo, MN 55042

---

Breyer Sponsored "Canadian Classic Live Show." To be held July 29, 1989 in Toronto, Ontario. 64 Classes including OF, RRH & Novice Divisions. Fantastic prizes!!! Also extensive list of remaking supplies including glass eyes, epoxy & lots of hair. Write for more information...Don't miss our show (+ Toronto sightseeing). Lisa Cvet, RR #2, Markham, Ontario, CANADA L3P 3J3.

---

MODEL HOBBY REFERENCE LISTING; (MHRL) a list of clubs/newsletters/pamphlets and their addresses for your information. FREE for large SASE: Doris Rau, PO Box 766, North Fork, CA 93643.

---

Subscribe to THE HOBBY HORSE NEWS: an all new and exciting model publication. LOTS of information and photos. Quality printing. A MUST for beginners as well as you veterans! \$16.00 a year, \$8.50 half year, Sample issue \$3.00. THHN-TMR, Paula Hecker, 815 W. Pensacola Unit 3, Tallahassee, FL 32304.

---

## A GOOD HORSE

### IS HARD TO FIND?

Not if you take a look at the Breyer Little Bits line and the club designed specifically for them!! Breyer Little Bits Club offers a class for everyone! The monthly shows are divided into Orig. Finish; R/R/H, AND Unicorns! Also offers Year-end Hi-Points, Nationals, newsletter all for the low price of \$3.00 per year. SASE to: Doris Rau, P.O.Box 766, No. Fork Calif 93643

\*\*\*\*\*

NOTE to all: The Hagen-Renaker Assoc. Club & Denise Nelson has recently MOVED to our New address below, please make a note of it:

Denise Nelson  
7325 Larchmont Drive  
No. Highlands, Ca. 95660

\*\*\*\*\*

# The World of Model Horses

By Janet Piercy

Everything you ever wanted to know about models.

- Collecting
- Breeding
- Clubs, Newsletters, and Registries
- Photo Shows
- Live Shows
- How To Hold & Judge Each Kind of Show
- How To Start Your Own Club



- Repainting
- Rehairing
- Remaking
- How To Make Tack & Obstacles
- **MUCH MORE!**



200 pages,  
spiral bound  
Helpful diagrams &  
drawings throughout.

Yes, I'd like to buy one copy of THE WORLD OF MODEL HORSES

Price per book is \$17.00 postage paid in the continental U.S.A.

Add \$2.00 for Alaska, Hawaii, & Canadian orders, \$4.00 Overseas.

Send orders to: Janet Piercy

(415) 664-5031 233 Juanita Way

San Francisco, CA 94127-1744

Name \_\_\_\_\_

Address \_\_\_\_\_

City \_\_\_\_\_ State \_\_\_\_\_ Zip \_\_\_\_\_



# Hagen-Renaker Association Club



**Celebrates It's 5th Year !!!**

The Hagen-Renaker Association Club (HRAC) is a club devoted to H-R horses, both DW's and Mini's. They can be in their original finish or can be repainted/Remade/haired. We have classes for ALL.

Membership is \$9.00 per year and includes a Monthly 10 to 12 page magazine called "THE GLASS MENAGERIE", which carries: HRAC news, show results, Ads for H-R's, Breyers, Tack, etc, plus classlists, a regular H-R column for both DW's & Mini's, want lists, sales lists, Auctions, and more!

We are currently looking for Volunteer JUDGES, who are experienced in holding photo shows, And who would LOVE to judge those LOVELY H-R's, have June through December OPEN! For more info, please send a Business sized SASE.

The HRAC holds it's Nationals in May, and awards Commercial ribbons, Rosettes and Certificates to over 100 Champions, Reserves, Top Ten, Register of Merit, Legion of Merit and Supreme Champions!!

We have Halter divisions, performance divisions, and each division has Championship titles to be earned through point placing with no time limit and no erasing of points at years end. This enables all horses to compete of Register of Merit, Legion of Merit, and Supreme Champion.

Our monthly class list offers a large selection of classes for both DW's as well as Mini's for equal competition. Also NO points to keep track of, our point keeper automatically tallys all monthly shows for you.

For further information on the HRAC or our publication "The Glass Menagerie", please send a Business sized SASE to;

HRAC  
Denise Nelson  
7325 Larchmont Dr.  
North Highlands, CA 95660

**Come On, show those LOVELY Hagen-Renaker's !!!!!!!**

"Gosh whiskers, Batman, that Sassalass Stallion-Only Benefit sure was tough to judge!"

"That's true, Boy Wonder. Let's hope we get lots of entrants for the upcoming Sassalass Benefit Shows (the classlist is mere pages away)- the Bat-Standardbred is eating us out of Batcave and home."

-----  
 Kay here - Will the girl who called me last year regarding the H-R "Mickey" Pomeranian please get in touch again? Couldn't find the dog after I had promised it, but just discovered that the brilliant moving men had packed it into a PICNIC BASKET!! So let me know if you still want it!

# DRM Originals

Specializing In

**Stablemate & Little Bit Size:**

- English & Western Tack

- Hunt/Jump & Games Obstacles

- Photo Services

**Traditional & Classic Items Also:**

English & Western Halters and Bridles

English Hunt and Park Saddles

Fine and Pleasure Harness

For catalog, send LSASE  
 with 45c stamp and \$1.00 to:  
 DRM Originals

Daphne R. Macpherson  
 5310 136th Place SW, Dept MR  
 Edmonds, WA 98020

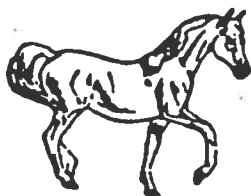
ROLLERRUBBER ANIMAL STAMPS  
 829 Valley Crest Drive  
 Vista, CA 92084

Mounts are commercial "Versadex" -  
 plastic over the top and sides.

Postage: 75¢/one,

\$1.50/2or more

"Sheba" (1.5 x 1.5") \$3.50



California people please add  
 6 1/2% sales tax.

STAMP! STAMP! STAMP!



Morgan foal (1.5 x 1.5") \$3.50



"Ferseyn" head (2.75 x 2") \$4.50

More designs available.

Also- the new HAGEN-RENAKER Stamp  
 horses: \$4 each Morgan, QH, ASB,  
 \$5 App and foal. Postage \$1.50 for  
 one, \$2 two or more





# SOJOURNER STUDIOS

SUE ROWE • 373 CIMARRON, LAKE ELMO, MN 55042  
(612) 436-1827

NEW FOR 1989:

- \*\*\*PASO FINO BELLA FORMA HALTER SETS!
- \*\*\*SOME WESTERN ITEMS IN CALIFORNIA FLAT BRAID!
- \*\*\*LIPIZZAN SADDLES AND BRIDLES!
- \*\*\*EVEN FINER FINE ARAB SHOW HALTERS!
- \*\*\*OTHER GOODIES!

Illustrated catalogs will be available in January. Cost is \$1.00 and long SASE. Please specify TACK CATALOG.

We're also in high gear making horses for our Spring Production Sale. Included will be an Appaloosa gelding and an Arabian filly both already Champions in limited showing. Look for a number of other breeds, too! Catalogs should be ready April 1st, with illustrations of each horse offered. Reserve a copy now for \$1.00 and long SASE.

Our Discontinued Models list is always being updated. Send 25¢ and SASE. Over 50 horses are currently listed.

We'd like to wish everybody "HAPPY NEW YEAR! and LOTS OF BLUE RIBBONS IN '89!" Visitors are welcome - coffee and chocolate chip cookies usually on hand! In hand??

SOJOURNER - FOR A HORSE THAT LOOKS ALIVE!!



## Rio Rondo's

# WESTERN SADDLE KIT

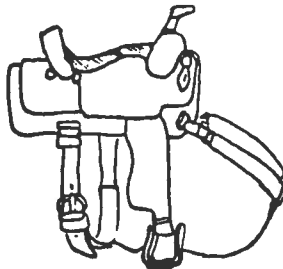
**\$16.00** ppd.

For a limited time only!

Now YOU can have a Rio Rondo Saddle at a fraction of the cost -- and, with NO WAITING!

**KIT INCLUDES:**

Complete, illustrated instructions  
patterns, leather, hardware  
saddle tree



- \* high quality tooling leather
- \* front and rear cinches
- \* All-Around styling--suitable for all events
- \* cinches and breastcollar are fully adjustable

We've cut no corners to bring you the finest miniature saddle kit available--using the same styling and techniques that have made Rio Rondo Saddles legendary in hobby circles.

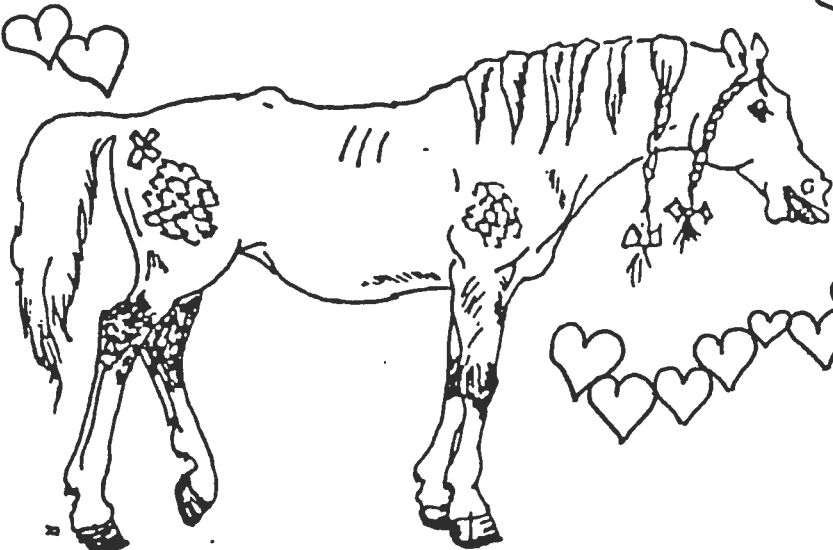
WOULD YOU EXPECT ANYTHING LESS FROM RIO RONDO?

Rio Rondo Tim Williams Box 111 Copeland, KS 67837

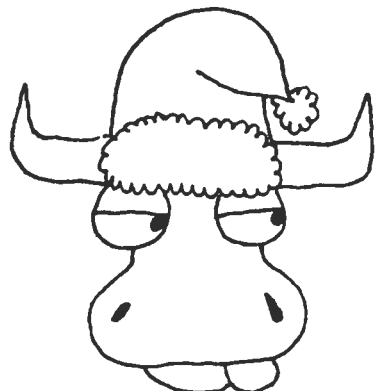
For ages 12 and up --- adult assistance is recommended







FROM THE DESK OF:  
*Madeline*



**MERRY CHRISTMAS  
TO ALL MY  
MODEL HOBBY FRIENDS**

This is a poem to cheerfully say,  
We hope you have a great Christmas Day!  
Hope Santa brings you that special horse,  
Along with tack, dolls, & obstacles of course!

There must be a camera under the tree too  
Tripod, lenses, and film, at least one or two.  
There's so much to do in this hobby of mine,  
Between work and school, where do I find the time?

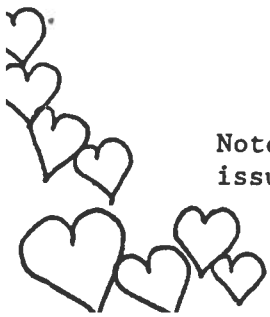
My hair is a different color from epoxy powder  
And my hearing is gone, can you speak a little louder?  
Leather dye stains in my nails,  
The Tandy catalog should be in the mail.

I need to get stamps to put on the envelopes,  
Write to friends while eating cantelopes (?).  
Oh, dear Santa, can't you see?  
I could use a thousand dollars, maybe three!

**LOVE FROM,**

Cheryl, the Model Hobby Fanatic  
Rick, the Model Hobby widow  
Glenn, the 3-yr-old with a collection too!  
Peppy & Greeny, the parakeets  
Maggie, the dog & Margie, the cat  
Madeline, who's still everything she used to be  
and all the rest of the Moos & Neighs!

Note: No, we're not late...Cheryl missed her deadline for the last issue!



# IT'S SHOWTIME!

**!!LIVE SHOW W.R.C. 1989!! May 13-14, at San Clemente Ramada Inn. For show packet, send LSASE to: Laurie Jensen, 32891 Calle del Tesoro, San Juan Capistrano, CA 92675.**



HRAC BENEFIT PHOTO SHOW

HRAC Rated: 3x

Date: March 6-11, 1989      Photos due by March 5, 1989

Entries to: Renee Mareska, 4107 W. Cielo Grande, Glendale, AZ  
85310.

Entry Fee: \$2.00 per stable (limit 75 pix) includes FULL RESULTS to all entrants. Please include 2 extra un-attached stamps for results (extra returned). You may send cash + envelope for postage if you wish, as I will have all weighed at the post office.  
PLEASE NO POSTAGE DUES!

All money to go to HAGEN RENAKER ASSOCIATION CLUB. Info on this great club will be sent to you upon request.

## CLASSLIST:

- |                         |                                                  |
|-------------------------|--------------------------------------------------|
| 1. OF Stallion          | 21. OF Ponies                                    |
| 2. RR Stallion          | 22. RR Ponies                                    |
| 3. OF Mare              | 23. OF Drafters                                  |
| 4. RR Mare              | 24. RR Drafters                                  |
| 5. OF Gelding           | 25. OF Colorbreeds (Palo,Pinto,etc)              |
| 6. RR Gelding           | 26. RR Colorbreeds ( " " " )                     |
| 7. OF Foal              | 27. OF Partbreds/Grades                          |
| 8. RR Foal              | 28. RR Partbreds/Grades                          |
| 9. OF Arabians          | 29. OF Donkey/Mule                               |
| 10. RR Arabians         | 30. RR Donkey/Mule                               |
| 11. OF Thoroughbreds    | 31. OF Other Purebreeds                          |
| 12. RR Thoroughbreds    | 32. RR Other Purebreeds                          |
| 13. OF Morgans          | 33. OF Fantasy Horses                            |
| 14. RR Morgans          | 34. RR Fantasy Horses                            |
| 15. OF Saddlebreds/TWH  | 35. Open OF Breyer                               |
| 16. RR Saddlebreds/TWH  | 36. Open RR Breyer                               |
| 17. OF Quarter Horses   | 37. Open OF/RR Hagen Renaker                     |
| 18. RR Quarter Horses   | 38. Open Beswick/Other China, OF/RR              |
| 19. OF Appaloosas/POA's | 39. Open Hartland/Other Plastics,OF/RR           |
| 20. RR Appaloosas/POA's | 40. Open All Others (Franklin Mint,<br>etc)OF/RR |

No cross-entering in classes 1-8, 9-34, & 35-40. Enter horse in one category only, please. Classes will be split when necessary.  
(ie: Breyers may be split with H-R's etc, in classes)

**MANY CHAMPIONS/RESERVES WILL BE NAMED!**

HRAC Members PLEASE have your registrations numbers on every photo for every horse you want points counted for. A separate set of champs will be named for HRAC registered horses.

## "THE MODEL RAG ALL HALTER BENEFIT"

- \* March 1-5, 1989 -- FEE \$2.00/stable, unlimited photos
- \* Judge: Kay Fowler, 160 Stony Bank Rd., Glen Mills, PA 19342
- \* No ribbons. This is a benefit! Please enter and support TMR!
- \* Halters not required; headgear is O.K. Full results to all!

Well, folks...the coffers are running low at The Model Rag, so come on out and support the cause! We have been discussing the idea of financing a Laser Printer for the old Macintosh to improve our printing quality, but the price tag has put a bit of a damper on things - come to the show and help us out!!

### Classes

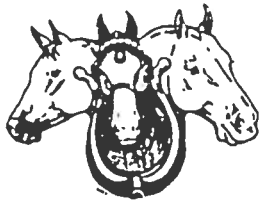
- |                            |                              |                                  |
|----------------------------|------------------------------|----------------------------------|
| 1. Stallion                | 12. TB/Stand/Warmbloods      | 24. Pinto color                  |
| 2. Mare                    | 13. Paso/Andal/Lippizan      | 25. Other color                  |
| 3. Gelding                 | 14. ASB/TWH/NSH              | 26. O.F. Current Breyer          |
| 4. Foal                    | 15. Draft Breeds (pure/part) | 27. O.F. Disc/S.R. Breyer        |
| 5. Showmanship             | 16. Other Purebred           | 28. O.F. Hartland                |
| 6. Arab                    | 17. Partbred                 | 29. O.F. H-R/Beswick             |
| 7. Pony Breeds (pure/part) | 18. bay/brown                | 30. O.F. Other                   |
| 8. Morgans                 | 19. black                    | 31. Repaint Only                 |
| 9. Appaloosa               | 20. chest/sorrel             | 32. Repaint/Haired               |
| 10. Paints                 | 21. white/grey/dapple        | 33. R/R/H                        |
| 11. QH                     | 22. buck/dun/grulla/palo     | 34. Judge's Choice (all entered) |
|                            | 23. App color                | 35. Hubby's Choice (all entered) |

PLUS...Many Champions and Reserves. ENTER AND SUPPORT THE MODEL RAG!!

### 1989 CALENDAR OF EVENTS.....LIVE SHOWS 1989

- \* March 12 - **WRC Benefit Live Show** - Kathleen Rose. See ad this issue.
- \* April 1st - **WRC Benefit O.F. Show** - Joan Berkwitz. See ad in this issue.
- \* April 22nd - **Shining Aspen Live Show** - SASE to Daphne Macpherson, 5310 136th Pl SW, Edmonds, WA 98020
- \* May 13-14 - **WESTERN REGIONAL CONGRESS** - will be held at the Ramada Inn, San Clemente, California. SASE for show packet to Laurie Jensen (above)
- \* June 17 - **"The Big Easy" All Halter - All Original Finish Live Show**. SASE to: Sue Rowe, 373 Cimarron, Lake Elmo, MN 55042
- \* June 17-18 - **HLOA Live** - Olathe, KS. SASE to: Tina English, RR1, Box 325, Spring Hill, KS 66083
- \* June 24 - **Indy Con Live Show**. Held at Carmel Motel. Send LSASE (or stamp) for classlist: Pat Reed, 237 N. 20 Ave, Beech Grove, IND 46107. Raffle: OF SR Terrang signed by Peter Stone.
- \* July 14-16 - **Rocky Mountain Hi Live Show**. SASE to Lisa Frankland, 1320 Potter Dr (Apt #214), Colorado Springs, CO 80909
- \* July 22 - **Upper Midwest Regionals VI**. SASE to: Mary Hubert, 1242 Ojibwa Rd. N., Brainerd, MN 56401
- \* July 29 - **All Hartland Live Show**. SASE to Debbie Buckler, 1294 Hagen Rd, Napa, CA 94558
- \* August 19th - All Halter Live Show at L. Jensen's, OF & RR
- \* September ? - **Washington State Autumn Classic Live Show** - Laura Pervier. See ad this issue.
- \* October 7-8 (I THINK!) - **CALIFORNIA LIVE!** SASE to Heather Wells, 3985 Strong St, Riverside, CA 92501
- \* October 28-29 - **Breyer World Championships** - will be held in Albuquerque, NM SASE to: Kathy Maestas, 508 W. Maple, Farmington, NM 87401
- \* November 18th - **All Halter Show** at L. Jensen's, OF & RR
- \* December 16th - **Year-End Championships - All Halter Show** at L. Jensens

**ATTENTION; MODEL HORSE EXHIBITORS  
DON'T MISS THE BIG EVENT!**



**THE 6th ANNUAL  
BREYER MODEL HORSE  
WORLD CHAMPIONSHIPS**

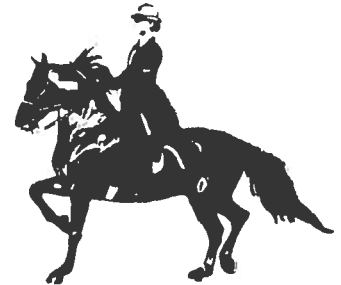


**MODEL HORSE SHOW AND CONVENTION**

**OPEN TO ALL BREYER MODELS**

**OCTOBER 21-22, 1989.**

**ALBUQUERQUE, NEW MEXICO**



**IT'S A FACT - THIS SHOW HAS IT ALL!**

**\*THE BEST LOCATION!**

**\*THE MOST CHAMPIONSHIPS AND AWARDS!**

**\*THE BEST JUDGES!**

**\*THE BEST PLACE TO BUY MODEL HORSES!**

**\*THE MOST FUN, WITH THE NATIONAL ARABIAN HORSE SHOW BEING HELD IN  
IN ALBUQUERQUE AT THE SAME TIME AS THE WORLD CHAMPIONSHIPS!**

Send a large Self Addressed Stamped Envelope with 2 stamps for your complete 1989 World Championships show package. Send to Kathleen Maestas 508 West Maple, Farmington, N.M. 87401

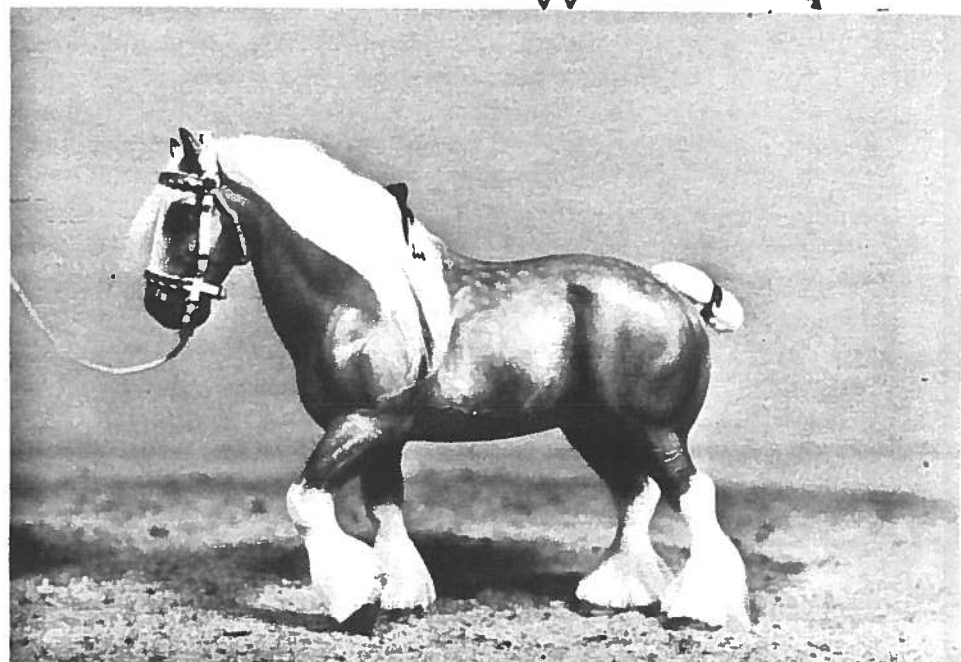


**WIN!!!**



**DIAMOND'S SILVER MONARCH**

One of several beautiful Maestas Originals which will be given to sponsors and exhibitors at the 1989 World Championships! You could win, just by sponsoring a class for \$2.50 or a champion for \$4.00, or a reserve champion for \$3.00. Send your sponsorship to Kathleen Maestas, address above. Give a second and third choice because sponsorships are limited to the number of classes at the show.



**Paradox Farms Spring Show Series - Lynne Baum, 3402 E. Hillery Dr,  
Phoenix, AZ 85032**

**DATES: March 6-12 OPEN (A)  
March 25-30 ALL R/R (B)  
April 15-21 ALL Halter (C)  
May 3-10 ALL Breyer (D)  
May 20-30 OPEN (A)**

**Fees: 1 show:\$4; 2 shows:\$7.50; 3 shows:\$10.50  
4 shows \$13; ALL 5 SHOWS: \$15**

**Prizes: Comm ribbons (new) 1st-3rd in all classes  
with entries of 12 or more models. MUST have  
15 stable entrants or more to give Comm  
ribbons. Models & Trophies will be given, size and  
type depending on entries. Other awards may  
include Tack, stamps, etc.**

**CLASSES:**

- |                                |                       |                                   |
|--------------------------------|-----------------------|-----------------------------------|
| 1. Colt u/1                    | 23. ASB               | 45. SM/Mini                       |
| 2. Filly u/1                   | 24. TWH               | PERF: (Note - no perf @ show "C") |
| 3. Yearling                    | 25. Morgan            | 46. WP - stock breeds             |
| 4. Open Gelding                | 26. half/grade        | 47. WP - light breeds             |
| 5. Open Mare                   | 27. Other light       | 48. West trail (obst)             |
| 6. Open Stallion               | 28. Pony Stal/Geld    | 49. Cut/Rop (animal req)          |
| 7. Veterans (horse 18 & older) | 29. Pony Mare/Foal    | 50. bar/poles                     |
| 8. West. showm. (halter)       | 30. Draft Stal/Geld   | 51. West riding                   |
| 9. Engl. showm. (halter)       | 31. Draft Mare/Foal   | 52. Reining (state pattern)       |
| 10. Showm. w/handler (halter)  | 32. Burro/Donkey/Mule | 53. Other west                    |
| 11. Open showm. (req halter)   | 33. bay/brown         | 54. EP saddleseat                 |
| 12. Arab Stallion              | 34. black             | 55. EP huntseat                   |
| 13. Arab Mare                  | 35. chest/sorrel      | 56. Eng trail                     |
| 14. Arab Geld/Foal             | 36. buck/dun/grulla   | 57. Dressage (level & movement)   |
| 15. Part Arab                  | 37. palo              | 58. hunter/jumper (jump req)      |
| 16. Paint/App Stal/Geld        | 38. App color         | 59. Park (Arab/Morg/ASB, etc)     |
| 17. Paint/App Mare/Foal        | 39. pinto color       | 60. Other Eng                     |
| 18. QH Stal/Geld               | 40. white/grey/dapple | 61. Harness (may divide)          |
| 19. QH Mare/Foal               | 41. roan              | 62. Costume (may divide)          |
| 20. TB/Wmbld Stal/Geld         | 42. Trad              | 63. Judge's Choice (all entered)  |
| 21. TB/Wmbld Mare/Foal         | 43. Classic           | 64. For Sale (price)              |
| 22. Paso/Andal/Barb            | 44. LB                |                                   |

**April 1st, 1989 - Vanessa's April Fools Show**

- |                    |                               |                                |                                                                                                                                                                                                                                                                                                                  |
|--------------------|-------------------------------|--------------------------------|------------------------------------------------------------------------------------------------------------------------------------------------------------------------------------------------------------------------------------------------------------------------------------------------------------------|
| 1. Black           | 13. Paints                    | 25. Jumping w/obs              | <b>RULES:</b> proper tack<br>req, halter no req, NO<br>postage dues.;<br><b>AWARDS:</b> H-R minis<br>to grand/res champ.<br>Places to 10th, full<br>results to all. <b>ENTRY<br/>FEE:</b> \$2.00 or \$.50<br>per horse. <b>SEND<br/>ENTRIES TO:</b><br>VANESSA PILLATZKE,<br>911 11th Ave. N,<br>Fargo, ND 58102 |
| 2. White/grey      | 14. Draft                     | 26. barrel/pole w/obs          |                                                                                                                                                                                                                                                                                                                  |
| 3. Brown/bay       | 15. Arabian                   | 27. Costume                    |                                                                                                                                                                                                                                                                                                                  |
| 4. Chest/sorrel    | 16. QH                        | CH/RES PERF                    |                                                                                                                                                                                                                                                                                                                  |
| 5. Pinto           | 17. App                       | 28. Best Horse 1 per<br>stable |                                                                                                                                                                                                                                                                                                                  |
| 6. Palo/buck       | 18. TB/Stand                  | 29. Best outdoor photo         |                                                                                                                                                                                                                                                                                                                  |
| 7. Other colors    | 19. ASB/TWH                   | 30. Best indoor photo          |                                                                                                                                                                                                                                                                                                                  |
| CH/RES COLOR NAMED | 20. Other breed               | 31. Judge's Choice             |                                                                                                                                                                                                                                                                                                                  |
| 8. Stallion        | CH/RES BREED                  | 32. Real animals               |                                                                                                                                                                                                                                                                                                                  |
| 9. Mare            | 21. WP                        | 33. Worst Photo                |                                                                                                                                                                                                                                                                                                                  |
| 10. Gelding        | 22. EP                        | 34. Best R/R/H                 |                                                                                                                                                                                                                                                                                                                  |
| 11. Foal           | 23. Harness w/ or w/o<br>cart | 35. Best O.F.                  |                                                                                                                                                                                                                                                                                                                  |
| CH/RES GENDER      | 24. Trail w/obs               | GRAND CHAMP/RES                |                                                                                                                                                                                                                                                                                                                  |
| 12. Pony           |                               |                                |                                                                                                                                                                                                                                                                                                                  |

W.R.C. BENEFIT LIVE SHOW AND HOUSE WARMING PARTY

WHEN : MARCH 12, 1989 SUNDAY starts at 10.00 am

WHERE : 11963 Sapota Drive (directions below)

FEEES: 5.00 per stable, no limit (all fees to benefit W.R.C.)

AWARDS : TROPHIES to GRAND and RES (RIBBONS to 3rd, PLACINGS to 10th)

POTLUCK : LUNCH, bring your favorite dish

OF AND RR ALL HALTER SHOW, COME JOIN THE FUN !!

REPAINT BY LAURIE JENSEN TO BE RAFFELED - tickets 1.00 ea.

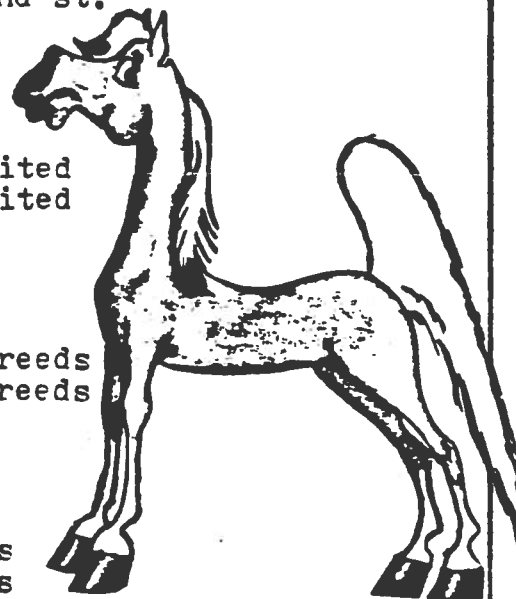
SALES ROOM - BRING YOUR SALE MODELS

QUESTIONS : call KATHLEEN ROSE - 619-390-7365

DIRECTIONS : address-11963 Sapota Dr. Lakeside, Ca. 92040  
5 south to 8 east, take the 2nd st. offramp,  
turn left and go aprox. 2 miles north (you will  
pass 5 lights) go up the hill, Sapota Dr. is on  
the left at the top of the hill. NOTE: 2nd st.  
turns into Winter Gardens Blvd.

CLASS LIST : OPEN ALL HALTER SHOW

- |                  |                         |
|------------------|-------------------------|
| 1 OF colt foals  | 18 OF TWH/other gaited  |
| 2 RR colt foals  | 19 RR TWH/other gaited  |
| 3 OF filly foals | 20 OF Paint/Pinto       |
| 4 RR filly foals | 21 RR Paint/Pinto       |
| 5 OPEN Stallions | 22 CF QH                |
| 6 OPEN Mares     | 23 RR QH                |
| 7 OPEN Geldings  | 24 OF Other pure breeds |
| 8 OF Ponies      | 25 RR Other pure breeds |
| 9 RR Ponies      | 26 OF Partbreds         |
| 10 OF Draft      | 27 RR Partbreds         |
| 11 RR Draft      | 28 OF Morgans           |
| 12 OF Appaloosa  | 29 RR Morgans           |
| 13 RR Appaloosa  | 30 OF TE/Warmbloods     |
| 14 OF Arabian    | 31 RR TE/Warmbloods     |
| 15 RR Arabian    |                         |
| 16 OF ASB/NSH    |                         |
| 17 RR ASB/NSH    |                         |



CHAMP/RES OF Stallion, Mare, Gelding, Foal  
CHAMP/RES RR Stallion, Mare, Gelding, Foal  
OVERALL GRAND/RES OF SHOW - TROPHIES

\*\*\*\*\* SUPPORT W.R.C. ! COME JOIN THE FUN ! \*\*\*\*\*

JUDGE : KATHLEEN ROSE



**APRIL FOOL'S DAY WRC BENEFIT SHOW  
"TALL 'N' SMALL" STYLE ORIGINAL FINISH SHOW**

- \* Saturday, April 1, 1989 9:00 sharp
- \* \$5.00 Entry fee - \$2.00 each raffle tickets
- \* Awards possible; at least choice of Stamp Horse set for Grand/Res Tall & Grand/Res Small plus "ribbons" for Division Champ/Res in Stallion, Mare, Gelding, Foal, etc. (Based on usual WRC shows).
- \* Joan Berkwitz, 5440 El Arbol Drive, Carlsbad, CA 92008 (619)431-1014 (San Diego County)
- \* This show is for Original Finish horses only - touch-ups and repairs O.K.... "Tall" refers to Traditional & Classic sized horses (6" & up) - "Small" will hopefully be Little Bits & Stablemates size - H-R minis especially welcome! Each class will be split into Tall/Small with seperate placings & Champ/Res.

**CLASSES:**

- |                      |                     |                                 |
|----------------------|---------------------|---------------------------------|
| 1. Arabs             | 8. Pony (pure/part) | 15. EP type                     |
| 2. QH                | 9. Morgans          | 16. Park type                   |
| 3. Draft (pure/part) | 10. Appys           | 17. Hunt type                   |
| 4. TB/Stand          | 11. Paints          | 18. Stal (only 1st/2nd placers) |
| 5. ASB/NSH           | 12. Other pure      | 19. Mare (only 1st/2nd placers) |
| 6. TWH/Other gaited  | 13. Other part      | 20. Geld (only 1st/2nd placers) |
| 7. Warmbloods        | 14. WP type         | 21. Colts                       |
|                      |                     | 22. Fillies                     |

A L. Jensen remake/repaint; will be raffled off at \$2.00 a ticket. Bring your luck! All money will go to WRC 1989 - Come and support the cause!



**LAKEWINDE STABLES SPRING PHOTO SHOW & RACEMEET  
APRIL 17-21, 1989**

- HALTER, PERFORMANCE, & THEME DIVISIONS
- SEPARATE OF/RR SECTIONS IN SOME CLASSES
- SEVERAL RACES FOR DIFFERENT AGES & BREEDS
- FULL RESULTS TO ALL ENTRANTS
- COMMERCIAL FLATS & ROSETTES; LOTS OF OTHER AWARDS
- POSSIBLY SOME SR'S AWARDED



SEND A LSASE TODAY FOR A FULL CLASSLIST w/ JUDGING CRITERIA & A SCHEDULE OF RACES!  
LAKEWINDE STABLES, c/o JACKIE HAMILTON, P.O. BOX 890173, HOUSTON, TX 77289-0173.

## **RIDEWYN T' RANCH**

C/O CHRISTINE WHITE  
229 APT. E BELLUGA AVE.  
FT. RICHARDSON, ALASKA 99505  
907-428-3371

SHOW DATES: APRIL 27-23, 1989, JULY 15-17, 1989, OCTOBER 13-15, 1989

### HALTER CLASSES

1. FOALS & WEANLINGS OF
2. FOALS & WEANLINGS R/R/H
3. GELDINGS OF
4. GELDINGS R/R/H
5. MARES OF
6. MARES R/R/H
7. STALLIONS OF
8. STALLIONS R/R/H
9. SIRE/GET
10. DAM/ PRODUCE
11. OPEN HALTER
12. SHOWMANSHIP OF\*
13. SHOWMANSHIP R/R/H\*

### COLOR CLASSES

14. BLACK/BAY OF
15. BLACK/BAY R/R/H
16. CHESTNUT/SORREL/PALAMINO OF
17. CHESTNUT/SORREL/PALAMINO R/R/H
18. WHITE/ GRUELLA/GREY OF
19. WHITE GRUELLA/GREY R/R/H
20. PINTO/PAINT OF
21. PINTO/PAINT R/R/H
22. APPALOOSA OF
23. APPALOOSA R/R/H
24. OTHER COLOR NOT LISTED OPEN

### BREED CLASSES

25. ARABIANS/MORGANS OF
26. ARABIANS/MORGANS R/R/H
27. QUARTER/STOCKBREEDS OF
28. QUARTER/STOCKBREEDS R/R/H
29. THOROUGHBRED/WARMBLOOD OF
30. THOROUGHBRED/WARMBLOOD R/R/H
31. PONY/DRAFT OF
32. PONY/DRAFT R/R/H
33. GAITED BREEDS OPEN
34. OTHER FULL BREEDS OPEN
35. OTHER PART BREEDS OPEN

### PERFORMANCE CLASSES

36. BAREBACK PLEASURE
37. ENGLISH PLEASURE
38. HUNTER/JUMPER W/JUMP
39. COMBINED\*\*+
40. ENGLISH TRAIL W/ OBSTACLE
41. WESTERN TRAIL W/OBSTACLE
42. WESTERN PLEASURE
43. ROPING/CUTTING
44. GAMES (POLES, BARRELS, ETC.)
45. HARNESS
46. COSTUME
47. VERSITILITY\*+
48. MASCOTT

\* HALTER OR APPROPRIATE BRIDLE REQUIRED.

\*\*+ NEED 1 PIX FROM EACH: DRESSAGE, X-COUNTRY & STADIUM JUMPING

\*+ NEED 1 PIX FROM EACH: HALTER, WESTERN & ENGLISH PLEASURE.

PLACING WILL BE 1ST-10TH & HM IN CLASSES OVER 30 ENTRIES. COMMERCIAL RIBBONS GIVEN 1ST-3RD .  
OVERALL CHAMPION WILL RECEIVE A TRADITIONAL SIZED HALTER IF THERE ARE AT LEAST 10 ENTRIES PER SHOW.  
IF THERE ARE ENOUGH ENTRIES OTHER TACK WILL BE AWARDED TO THE OVERALL CHAMPIONS IN HALTER, ENGLISH  
AND WESTERN.

FOLLOWING CHAMPIONS WILL BE NAMED FOR EACH SHOW: FOAL WEANLING OF & R/R/H, GELDING OF & R/R/H,  
MARE OF & R/R/H, STALLION OF & R/R/H, OVERALL HALTER CHAMPION, ENGLISH PERFORMANCE, WESTERN  
PERFORMANCE, AND OVERALL & RESERVE CHAMPION.

FULL RESULTS ARE FREE. ENTRY FEES ARE AS FOLLOWS: \$4.00 FOR UNLIMITED PHOTOS. \$1.50 FOR ONE HORSE.

JUDGE WILL COMBINE OR CANCEL CLASSES AS SHE SEES FIT. ALL DECISIONS OF THE JUDGE ARE FINAL.

WHEN MAILING PLEASE ALLOW PLENTY OF TIME AS MAIL CAN BE SLOW GETTING TO ALASKA. ALLOW AT LEAST 7  
TO 10 DAYS. ENCLOSE PLENTY FOR POSTAGE AND I WILL SEND BACK ANY EXTRA. IF YOU WISH TO SEND CASH I  
WILL MAKE A TRIP TO THE POST OFFICE FOR YOU. POSTAGE DUES WILL BE ACCEPTED. HOWEVER, I WILL NOTIFY  
YOU AND SEND YOUR RESULTS AFTER I RECEIVE THE POSTAGE DUE.

WASHINGTON STATE AUTUMN CLASSIC LIVE SHOW  
SEPTEMBER 1989

IN THE GREATER SEATTLE AREA

In October of 1987, I held the first **Washington State Autumn Classic Live Show**. Over 20 people attended, from British Columbia, Oregon and Washington. Everyone had a great time, taking home plenty of ribbons and door prizes. We had a separate division for Original Finish and Repaint/Remake, with plenty of classes to choose from. This year we will have the same two divisions, with just as many classes to choose from. This year's show plans to be just as much fun as before, if not more!!

The **Live Show** will be on a Saturday, in September, depending upon booking dates. The show packets will be ready as soon as I get a confirmed booking date. For information or a show packet, please send a SASE (legal sized for the show packet) to me. If you would like to sponsor a class or donate anything for the show, a SASE is not required.

Elsewhere in this issue is an ad for a series of benefit all-halter photo shows. The shows are set up so you can enter more than one show, for the return postage of one show!! There are 2 divisions, Original Finish and Repaint/Remake/Haired, with 39 classes per division. And all this for **ONLY \$1.00!!!** Please enter your horses in the benefit show, even if you are unable to attend the **Live Show**. The show treasury will appreciate it!!

So plan on packing up your best show horses and attending this great **Live Show** in September. If you don't come you will be missing out on a fun show. Address any correspondence to the Show Chairman: Laura Pervier, 2071 - 128th Ave SE, Bellevue, WA 98005

---

1989 PHOTO SHOW SERIES

JUDGE: Michelle Miller/3455 Walker Ave/Grand Rapids, MI/49504

FEE: \$1.00 per show

At the end of the series, top ten will be named with prizes. Classlist is the same for all shows.

FEB 25, 1989: stallions only

MAR 25, 1989: mares and geldings only

APR 29, 1989: stock breeds (QH, Paint, App, etc)

MAY 27, 1989: Arabian/TB/Warmbloods/Morgan

JUN 24, 1989: foals only

JUL 22, 1989: Gaited/Pony/Draft

AUG 26, 1989: all other breeds

SEP 23, 1989: CHAMPIONSHIPS: horses must have placed 1st-3rd in one of the series classes to enter.

CLASSLIST:

- |                                         |                      |
|-----------------------------------------|----------------------|
| 1. grey/white/black                     | 15. open halter      |
| 2. bay/dun/chestnut                     | 16. west. pleas.     |
| 3. app/pi/pa color                      | 17. west. trail      |
| 4. other color (will split)             | 18. roping/cutting   |
| 5. original finish                      | 19. barrels/poles    |
| 6. r/r/h                                | 20. other west perf. |
| 7. breyer                               | 21. eng pleas        |
| 8. other make (please state/will split) | 22. eng. trail       |
| 9. action conf                          | 23. SS/Park          |
| 10. standing conf                       | 24. hunt/jump        |
| 11. current                             | 25. other eng perf   |
| 12. disc/SR                             | 26. harness          |
| 13. showmanship with halt and lead      | 27. cost/parade      |
| 14. showmanship without halter          | 28. other perf.      |

Want a Great Showing and Collecting Experience? Join the **GREAT LAKES MODEL HORSE ASSOCIATION** (Formerly, Michigan Model Horse Club)! We are now **OPEN TO THE FOLLOWING STATES, AND CANADIAN PROVINCE: ONTARIO, Michigan, Ohio, Indiana, Illinios, Wisconsin, Minnesota, Pennsylvania and New York!** We have at least two Live Shows each year, a yearly Sire/Dam book, monthly Photo Point Shows, with a seperate classlist just for Foals! GLMHA features such items as; seminars on how to take indoor/outdoor photos, make your own tack at a tack seminar, or obstacles! Information in our newsletter; which is published 6 times a year, informs collectors as well as Showers, of whats new, whats being discontinued, and special Editions. Not just Breyer news, but Hartland news, H-R news, Beswick news, as well as news about **NEW MOLDS!** Membership includes this **INFORMATIVE** newsletter! Dues are yearly, expiring Jan 31st, a small fee of **ONLY \$4.00!** If you are interested in competing against Midwest's finest models, or want more information, just send \$1.00 (refundable when you join, or apply towards membership), and Business size SASE to:

**GREAT LAKES MODEL HORSE ASSOCIATION**

**CHERYL MONROE**

**4616 N Ainger Rd  
Charlotte, MI 48813**



**GREAT LAKES MODEL HORSE ASSOCIATION 9th Annual LIVE SHOW!**

**JUNE 24, 1989! Held at: UAW 652 HALL, LANSING, MICHIGAN**

**HOSTESS: CHERYL MONROE, 4616 N AINGER RD, CHARLOTTE, MI 48813**

GET SET FOR THE GREAT LAKES MODEL HORSE ASSOCIATION 9TH ANNUAL LIVE SHOW! ALL COMMERCIAL AWARDS, CHINA PLATES AND CUPS, SPECIAL RUN BREYER SETS, OR DISCONTINUED HORSES! TWO DIVISIONS, **NOVICE** and **OPEN!** Entry Fees this year are restructured, to allow GLMHA members and New Showers in the hobby a break on fees: \$15.00 Open Fee, \$10.00 GLMHA member, or NOVICE New Showers. Entry Deadline is June 17th. 50 Classes in all! Including an OPEN Collectors Class! Breeding classes for GLMHA Members, and even a mascot class, so if you want to join in on the fun, write now, including your SASE, for more information. The Michigan Model Horse Club, has now EXPANDED to become the GREAT LAKES MODEL HORSE ASSOCIATION, so you model enthusiasts who live in a state or Province connected to our Wonderful Great Lakes, you are welcome to join the Club! For more information, send \$1.00 (refundable if you join, or apply towards membership), and a Business size SASE to Hostess listed above!

FAR WEST CLASSIC PHOTO SHOW

March 4, 1989

\* HALTER \*\*

- 1. Stallion
- 2. Mare
- 3. Gelding
- 4. Foal
- 5. Showmanship (halter req'd)
- 6. Arabian
- 7. Appaloosa
- 8. ASB/TWH/NSH/Morgan
- 9. Donkey/Mule/Zebra
- 10. Draft
- 11. Paint/Pinto
- 12. Paso/Andalusian/Lippizan
- 13. Pony
- 14. Quarter Horse
- 15. TB/Warmblood
- 16. Other Breed
- 17. OF Current Breyer
- 18. OF SR Breyer
- 19. OF Disc Breyer
- 20. OF Hartland
- 21. OF H-R, Beswick
- 22. OF Other
- 23. Repaint Only
- 24. Repaint/Hair
- 25. R/R/H
- 26. NOVICE HALTER

SEND ENTRIES TO:

Traci Durrell-Khalife  
 620 NW 21st St. #14  
 Corvallis OR 97330  
 USA

- 33. Barrels
- 34. Poles
- 35. Other Gymkhana
- 36. Bareback
- 37. Other Performance
- 38. NOVICE WESTERN
- \*\* ENGLISH PERFORMANCE \*\*
- 39. Huntseat Pleasure
- 40. Saddleseat Pleasure
- 41. Park/Gaited
- 42. Sidesaddle
- 43. Trail
- 44. Endurance
- 45. Hunter
- 46. Jumper
- 47. Dressage
- 48. 3-Day Event (pix from 45,46,47)
- 49. Bareback
- 50. Other Performance
- 51. NOVICE ENGLISH
- \*\* MISCELLANEOUS \*\*
- 52. Harness with vehicle
- 53. Harness without vehicle
- 54. Arabian Costume
- 55. Indian Costume
- 56. Other Costume
- 57. Versatility (1 halt + 4 perf)
- 58. NOVICE MISC. PERFORMANCE
- 59. For Sale - state price
- 60. Judge's Choice ) all auto-
- 61. Husband's Choice) matically entered

\* WESTERN PERFORMANCE \*\*

- 27. Western Pleasure
- 28. Natural Trail
- 29. Arena Trail
- 30. Reining
- 31. Cutting
- 32. Roping

Entry Fee: \$2 per stable or \$1 per horse

Full results to all

All normal rules apply; classes may be divided or combined as entries warrant.

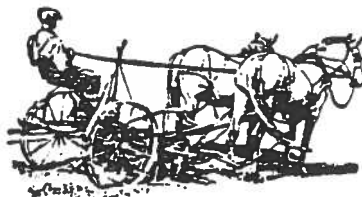
Novice is a person who has photo or live shown 2 yrs. or less; photos must be by owner. Novice Grand/Reserve will be selected from classes 26, 38, 51 & 58.

Championships will be decided by judge-offs.

Prizes: OF StableMate to Grand; nice horse stickers to Reserve. Certificates to other champs. Novice Grand/Reserve will receive tack by Pacific Crest.

Ads will be printed in results. 25¢ for "box ad" approximately 2" X 4". 50¢ for 1/2 page.

\*\* SPECIAL DOOR PRIZE \*\* All entrants' names will go into a door prize drawing. A nice surprise gift will be sent (I pay postage) to the drawing winner.



## AMHCO CIRCUIT SHOWS

Shows each month! See rules, classlists, and judges below!

### SHOW A: NOVICE/JUNIOR/AMATEUR

|              |                 |                                                    |                                                                                                                                                                                                            |
|--------------|-----------------|----------------------------------------------------|------------------------------------------------------------------------------------------------------------------------------------------------------------------------------------------------------------|
| Halter       | 9. Other Breeds | 17. Trail w/obs                                    | 24. Oth. Eng.-state, 2 pix per horse max.                                                                                                                                                                  |
| 1. QH        | 10. Stallion    | 18. Gymkhana                                       | 25. Costume/Parade                                                                                                                                                                                         |
| 2. Arab      | 11. Mare        | 19. Cutting                                        | 26. Harness                                                                                                                                                                                                |
| 3. Draft     | 12. Gelding     | 20. Roping                                         | Champs Named: Stal, Mare, Geld, Foal/Yr, Overall Halter, West. Perf, Eng. Perf, Overall Perf, Grand/Res.*** Overall Hal & Perf & Grand/Res will be split into Lt Breed, Stock, & Other if entries warrant. |
| 4. Pony      | 13. Foal        | 21. Other West Perf-state, 2 pix per horse maximum |                                                                                                                                                                                                            |
| 5. App       | 14. Rep/rem     | 22. Open Eng. Pl.                                  |                                                                                                                                                                                                            |
| 6. Pa/Pi     | 15. Orig. Fin.  | 23. Hunter/Jumper                                  |                                                                                                                                                                                                            |
| 7. TWH/ASB   | Performance     |                                                    |                                                                                                                                                                                                            |
| 8. TB/Wmblds | 16. West. Pl.   |                                                    |                                                                                                                                                                                                            |

ENTRY FEE: \$1.00 per stable, or 35¢ per horse, OR HALTER

CLASSES ONLY: 50¢/stable, 20¢/horse.

AWARDS: Cash payback equal to 10% of show entry fees to Grand, 5% to Res Gr (if Gr/Res are split into type, then cash paybacks will also be split.)

ELIGIBILITY FOR ENTRY IN SHOW A: This show is for those relatively new to the hobby. Entrants must take their own photos and must not offer their photo services to the public for any kind of remuneration. (FFH models may be done by anyone though). OR if showing a model photographed by another person, the model must have been purchased with photos done by another novice. Photos may not be entered which were taken by a professional model horse photographer, or by someone whose skills are considered at the professional level.

SHOW B: SENIOR/VETERAN/PRO: This show is for those whose models place consistently well, for those who have advanced beyond the novice stage of competition. Also for those who've had their models photoed by a professional (anyone who offers their photo services to the public for any kind of remuneration is considered a professional, regardless of actual quality).

SHOW B FEE: \$1.00 per stable or 35¢ per horse, OR HALTER CLASSES ONLY: 50¢/stable, 20¢/horse

SHOW C: OPEN TO ALL: FEE: \$1.00/stable or 35¢/horse, OR HALTER ONLY: 50¢/stable, or 20¢/horse.

PLEASE BE SURE TO MARK YOUR ENTRIES WITH WHICH SHOW(S) YOU ARE ENTERING SO THE JUDGES WILL BE SURE TO GET YOU IN THE CORRECT SHOW!

### SHOW B & C: BOTH USE THE FOLLOWING CLASSLIST

|                 |                                            |                         |                                                       |
|-----------------|--------------------------------------------|-------------------------|-------------------------------------------------------|
| Halter          | 18. RR Stal                                | 32. Steer Roping        | Gaited/Park/Sadst                                     |
| 1. Arab         | 19. RR Mare                                | Gymkhana                | 46. Gaited SS (Show type ASB, TWH)                    |
| 2. App          | 20. RR Geld                                | 33. Barrels             | 47. Park-Arab, Morgan & 1/2 breds                     |
| 3. QH           | 21. RR Foal                                | 34. Poles               | 48. Sadst PlA-stk breeds, non-park type Arabs/Morgans |
| 4. TB           | Performance                                | 35. Flag Race           | 49. Sadst Pl B-Pl type Gaited breeds                  |
| 5. Warmbl       | West. Pleas Div                            | 36. Other Gym-state     | **46-49: ONE class per horse                          |
| 6. Morgan       | 22. WP-Stock Breeds                        | Eng. Pleas. Div.        | Harness                                               |
| 7. Paint*       | 23. WP Light Breeds                        | 37. Huntst-stock breeds | 50. Draft Harness                                     |
| 8. Pinto*       | 24. Arena Trail                            | 38. Huntst-light breeds | 51. Pleas Harness                                     |
| 9. ASB          | 25. Nat. Trail                             | 39. Bareback            | 52. Fine Harness                                      |
| 10. TWH         | 26. Bareback                               | 40. Eng. Trail          | 50-52: ONE class per horse                            |
| 11. Draft       | 27. West. Riding*                          | Working Eng. Div.       | Costume/Parade                                        |
| 12. Pony        | Working West Div.                          | 41. Dressage-state      | 53. Parade                                            |
| 13. Oth. Breeds | 28. Cutting                                | 42. Hunter o/fences     | 54. Ind. Costume                                      |
| 14. OF Stal     | 29. Roping                                 | 43. Stad. Jumper        | 55. Arab Costume                                      |
| 15. OF Mare     | 30. Reining-state what horse is performing | 44. X Country o/fences  | 56. Oth. Costume                                      |
| 16. OF Geld     |                                            | 45. 3-Day Event*        |                                                       |
| 17. OF Foal     | 31. Reined Cowhorse*                       |                         |                                                       |

ADDITIONAL SHOW RULES AND NOTES: SHOWS B & C: Classes #768, Paints are of QH or TB type, Pintos may be of any type. NO Cross entering! HALTER CLASSES: Only one class per horse in the Breed Classes (1-13)

#27. West Riding: a single pic depicting the model performing a part of the west riding pattern.

29. S32-these require different types of photos. One pic MAY NOT be entered in both classes.

31. Cutting & Reining pix req, or a Reined Cowhorse pic & Reining pic req.

45. 3-day Event-req. 3 pix: Jumper, dressage and X country.

CHAMPS NAMED AT BSC SHOWS: (Ch & Res for each listed): OF Halter: Stal, Mare, Geld, Foal, RR Hal: Stal, Mare, Geld, Foal. Overall Hal: Gaited, Stock, Light, and Draft/Pony. Perf: Ch/Res named for each division.

Plus Overall Perf: Stock, Light, Gaited, Draft/Pony. Gr/Res: Stock, Gaited, Draft/Pony, Light.

AWARDS: (BSC Shows): 10% cash payback to Gr, 5% to Res (to be split among the 4 winners of each)

THERE IS AN ENTRY LIMIT OF 60 PHOTOS PER ENTRANT/STABLE.

PLEASE BE SURE TO ENCLOSE TWO SASES: One w/enough post for return of your pix right after the show, and the other a SASE w/1-1st cl. stamp for the return of your results. Results are mailed out from the AMHCO Home Office (Rebecca Hileman, PO Box 518, Conway, AR 72032).

PLEASE NOTE ON YOUR ENTRIES WHICH SHOW(S) YOU ARE ENTERING: A, B, OR C, or ASC, BSC!

### JUDGES:

Mar 9-16: Wanda Eversberg, Rt 1 Box 1191, La Plata, MD 20648 (A, B, & C Shows)

Apr 1-8: Sue Sudakum, 205 Franklin St, Traverse City, MI 49684 (A, B, & C Shows)

May 6-13: Carol Boettcher, N9525 Hwy 175, Lomira, WI 53048 (A, B, & C Shows)

June 10-17: Terri Underhill, 3113 Weld County Rd 17, Brighton, CO 80601 (A, B, & C Shows)

July 15-22: Mary Vandergrift, Rt 2 Box 185A, Mason, TN 38049 (A, B, & C Shows)

NORTHWOOD FARM'S SPRING BREAK ALL HALTER SHOW

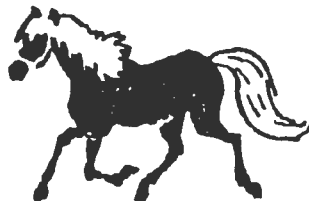
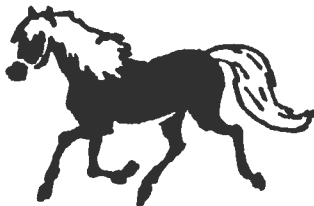
March 24 - April 2, 1989

- |                               |                             |
|-------------------------------|-----------------------------|
| 1. OF Stallions               | 21. Black                   |
| 2. RR Stallions               | 22. Bay                     |
| 3. OF Mares                   | 23. Dapple/White/Gray       |
| 4. RR Mares                   | 24. Chestnut/Sorrel         |
| 5. OF Geldings                | 25. Palomino/Buckskin/Dun   |
| 6. RR Geldings                | 26. Appaloosa               |
| 7. OF Foal/Yearling           | 27. Pinto/Paint             |
| 8. RR Foal/Yearling           | 28. Other Color             |
| 9. Arabians                   | 29. Current OF              |
| 10. Appaloosas                | 30. Discontinued OF         |
| 11. Thoroughbred/Standardbred | 31. Special Run/Test Run OF |
| 12. Quarter Horses            | 32. Repaint only            |
| 13. Pinto/Paint               | 33. r/h only                |
| 14. European Warmblood        | 34. r/r/h only              |
| 15. Spanishbreeds             | 35. Photo by owner          |
| 16. ASB/TWH                   | 36. Photo by other          |
| 17. Morgan                    | 37. OF Traditional          |
| 18. Draft                     | 38. RR Traditional          |
| 19. Ponies                    | 39. Classic                 |
| 20. Other Breeds              | 40. Little Bits/Stablemates |

RULES

1. Entries must be received by March 24, 1989. Late entries will be placed in remaining unjudged classes.
2. Entry fee: 50¢ per horse or \$3.00 stable fee.
3. Photos must be accompanied by a large SASE with enough postage for return of photos, results, and any prizes won.
4. Full results will be given to all, free of charge.
5. PRIZES: used (but not abused) commercial ribbons 1-3 in every class. Grand Champ receives blue rosette and a halter, Reserve Grand Champ receives red rosette. Places 1-10 and HM.
6. DO NOT send entries postage due!!
7. Any ads (Classified type ONLY) will be printed in the results for 25¢ per ad.
8. Info needed on photo backs: name of horse, age, sex, breed, and owner's name & address, plus class #'s entering.

Send all entries to: Laura Von Hagel  
5431 Hildebrand Ct.  
Columbia, MD 21044





*Shining  
Aspen  
Live Show*



Is PROUD to ANNOUNCE

**BREYER  
SPONSORSHIP**  
*for our 1989 show!*  
featuring

- OF & RR Halter & Performance Classes
  - Special Novice Classes
- Breyer & Hartland Collectors Classes
  - Sweepstakes & Fantasy Classes
- Door Prizes, Raffles, Silent Auction

Plan now to attend the most exciting live show  
in the Pacific Northwest!

Send business size SASE + 45c postage to:

Shining Aspen Live Show Info Packet  
Daphne R. Macpherson  
5310 136th Place SW  
Edmonds, WA 98020



HARTLAND LOVERS OF AMERICA OPEN INVITATIONAL SHOW

MARCH 11-13, 1989

ENTRIES TO: PAT HENRY, BOX 193, RD. 2 RT. 519  
FRENCHTOWN, N.J. 08825

♥ **FEE:** \$1/stable, unlimited entry or 25¢ per horse. Full results to all. Send SASE for ret. of pix., & bus.size envelope for full results later. OPEN TO HARTLAND MODELS ONLY!! Old, Stevens or current, we want to see them all here! ALL ENTRANTS RECEIVE FREE SAMPLE OF HARTLAND LOVER'S OF AMERICA RULEBOOK & NEWSLETTER, & FREE MEMBERSHIP & REGISTRATION FOR A YEAR! (Newsletter sub. extra.) HLOA RATED 3X PTS.

♥ **AWARDS:** To Ch./Res.Stal, Mare, Geld.& Foal - \$1 off coupon on your next order to HARTLAND COLLECTIBLES! To GR/RES.Halter - \$2 off! To GR.CH.PERF.horses - \$1 off coupon for HARTLAND SIZE TACK ORDERS ONLY from SOJOURNER STUDIOS! OTHER CH'S.NAMED: Ch.Novice Halt./Res, Ch.Park/Gtd.Perf./Res, Ch.Hunt Type EP/Res, Ch.Nov.EP/Res, Ch.Lt.Brd.West.Perf./Res, Ch.Stock Brd.WP/Res, Ch.Nov.WP/Res, Ch.Misc.Perf/Res., GR.CH.Novice Overall. Gr's in Perf.will be Gr.Ch.Gtd.Perf.Horse/Res, Gr.Ch.Hunt Type Perf./Res, & Gr.Ch.Stock Type Perf./Res.

♥ **RULES:** No hackamores/tapadieros in any west.event except Misc.WP. All other AHSA-type (real horse show) rules apply. BE SURE TO LIST THE PROPER CLASS SPLIT ON PHOTO BACKS!! NOVICES are those HORSES (rather than people) that have never won a Champ., or have won less than 3-1sts. ONE PHOTO PER HORSE, PER CLASS!! If more than 1, it'll be judged as ONE entry.

♥ **HALTER**

\*\* Class splits on #'s 1-4 are:  
A)Old Molds B)New Hart.Coll.  
or Stevens molds. C)Novice

1. Stallions\*
2. Mares\*
3. Geldings\*
4. Foals\* (yrlg./under)

\*\* Class splits on #'s 5-8 are:  
A)Old Molds B)New HC/Stevens

5. 11" Regal/Superb Ser.\*
6. 9" Indiv. Series\*
7. Family Series 5-7"\*
8. Horse/Rider series\*  
(u/halter-no rider req.)
9. Tnymites

10. Misc. Molds (see definition of these molds, pg.2)

\*\* Class splits for 11-13 are:  
A)Stal/Geld. B)Mares

11. Op. Orig. Finish Old Molds\*
12. Op. Dr. Fin. New Releases\*
13. Op. Rep./Remake, all\*
14. Op. Novice Halter\*  
A)Stal/Geld. B)Mares

15. Op. Pony (no POA's)
16. Op. Mustang
17. Op. QH
18. Op. T-bred/St.bred

19. Op. Arab
20. Op. App/POA
21. Op. TWH's
22. Op. ASB's
23. Op. Morgans
24. Op. Pi./Paint

25. Op. Other Pure (ie, Draft, Andalusian, etc.)not listed.

26. Op. Halfbreds

27. Rarest OF Old Mold Hartland.

Op.to any pre-1980 Hart. you consider to be an exceptional find. To be judged on #1, rarity & #2, condition. In cases of horses & riders, completeness of the set is foremost; all others, look for rubs/etc. to mark down on, w/factory goofs/test colors to tie highly, along w/other hard-to-find molds/colors.

28. Hart.Collectible/Stevens Special Runs - please don't enter current run colors.

~~\*\*Please consult Judging Guide for ideas on "rarity".~~

♥ **ENGLISH PERFORMANCE**

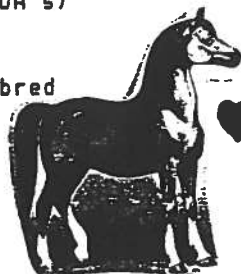
29. Op. Eng.Perf.\*(HS or SS) A)Senior
30. Op. Huntseat B)Nov.
31. Op. Park horse (arab/morg.)
32. Op. 3/5 gaited (SB, TWH)

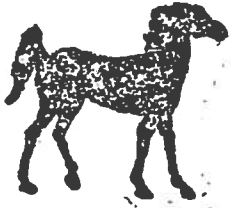
♥ **MISCELLANEOUS PERF.**

33. Op. Novice Oth.Eng.Perf. (H/J, Tr., Harn., Par., Dress.)
34. Op. Harness (no veh. req.)
35. Open Cost./Parade
36. Op. Hunter/Jumper w/obst.
37. Op. Sr. Oth.Eng.P. A)BB B)Dres,Tr, etc.

♥ **WESTERN PERFORMANCE**

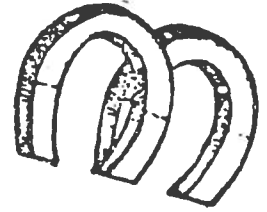
38. Op. WP\* A)Lt.Brd. B)Stock Brd. C) Novice
39. Op. West. Trail w/obst. (no eng.)
40. Op. Cut./Rein./Rop. w/calf
41. Op. Gymkhana-Flags, Bar., Poles
42. Op. Other West.Perf.\* A)BB B)Endurance, Hack., etc. C)Novice. Nov's can enter any oth.west.event pix. EXCEPT West.Pl.)
43. H/R Perfor. (H/R series w/riders. No doll riders.) Doesn't count for West.perf.Champ.





PORTSHORE STABLE ANNIVERSARY SHOW

April 15 - 17, 1989



Division I Halter

- 1 OF/TU Stallion
- 2 OF/TU Mare
- 3 OF/TU Gelding
- 4 OF/TU Foal/Yearling
- 5 OF/TU Showmanship
- 6 RRH Stallion
- 7 RRH Mare
- 8 RRH Gelding
- 9 RRH Foal/Yearling
- 10 RRH Showmanship

Division II Breed

- 11 Arabian
- 12 Thoroughbred/Warmblood
- 13 Paint/Pinto
- 14 Appaloosa
- 15 Andul/Lip/Lusit/Morgan
- 16 Quarter Horse
- 17 Draft
- 18 Pony
- 19 ASB/TWH/MFT/Paso
- 20 Other Pure Breeds/Mix

Division III Mold

- 21 OF/TU Breyer Trad.
- 22 RRH Breyer Trad.
- 23 Breyer Classic/LB/SM
- 24 Hartland/Other Plastic
- 25 HR/Beswick/Other China

Division IV Performance

- 26 Huntseat Pleasure
- 27 Hunter/Jumper (with obstacle)
- 28 English Trail
- 29 3-day event (3 pics needed)
- 30 Park/Saddleseat
- 31 Harness
- 32 Other English
- 33 Western Pleasure
- 34 Western Trail
- 35 Western Games/Gymkhana (with explanation)
- 36 Cutting
- 37 Roping
- 38 Western Riding (state what move)
- 39 Other Western

RULES

- 1 Photos must be received by April 14, 1989.
- 2 FEE: \$3.50 per stable.
- 3 Include 1 or 2 SASE for return of pics, prizes, and results.

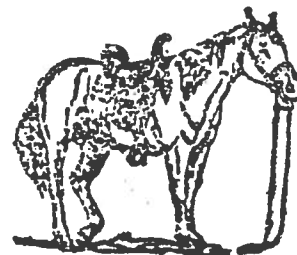
AWARDS

TROPHIES TO ALL CHAMPIONS!!!  
ROSETTES TO ALL RESERVES!!  
COMMERCIAL RIBBIONS 1st-3rd!

CHAMPIONS NAMED IN EACH  
DIVISION AS WELL AS OVERALL  
GRAND AND RESERVE!!!!

SEND ENTRIES TO:

JULIE BOZEMAN  
PORTSHORE STABLE  
3431 ROOD ROAD  
MUSKEGON, MICHIGAN 49441



AN INVITATION TO MISTY MEADOW FARMS 2nd ANNUAL ENDURANCE RIDE

THE HIGHLINE TRAIL IN PINE ARIZONA MARCH 12th 1988

Participant Award Certificates presented to all horses entered! RACE OPEN TO ALL MODELS AND ALL BREEDS SANCTIONED BY THE AMERICAN ENDURANCE RIDE CONFERENCE. AERC-ENDURANCE RIDES ARE NOT RACES, BUT WINNERS ARE SELECTED FOR THEIR CONDITION AT THE FINISH LINE. THIS YEAR THERE WILL BE TWO DIVISIONS:

NOVICE DIVISION: Open to beginners and "green" young horses. Any photo will qualify (\*Halter or performance). Will be judged on suitability to long distance trail riding. \*Example: Select a well conditioned horse; preferably not overweight. Light horse breeds i.e. Arabians, part-breds, etc. are usually very competitive. Horses should appear willing and manageable.

SENIOR DIVISION: Open to seasoned veteran trail horses. Photos entered in this division should portray the horses on the trail (\*or at any point before or after the race.) Will be judged on creativity, originality, and horses suitability to trail riding.

THE HIGHLINE TRAIL IS A 50 mile difficult mountain course, any type of tack is permissible, including bareback. Riders (dolls) are not required, nor will any photo be penalized for their absence. This race is open to Mares, Stallions and Geldings, but minimum age requirement will be 4 years. There will be four Vet checkpoints to monitor the horses condition throughout the race.

ENTRY FEE: \$1.00 per horse (photo). Please include a large SASE with sufficient postage for return of photos and full results, including photos of the winners. Entries close March 11th.

AWARDS: Beautiful custom 10" ribbons COMPLETION AWARD to the top 15 horses in each division. there will be 8 Honorable Mention (\*same ribbons only white) awarded to the best conditioned horses at each checkpoint. Supreme Champion will receive a custom oak horse head wall plaque with a brass nameplate engraved with the winners name. Misty Meadow Farm will not be responsible for any lost mail, photos or cash. Please be sure that your photos are all well marked. Include extra stamps (\*unused) that will be returned to you if not necessary. Join us for this fun event!!!!!!

LAST YEARS WINNERS INCLUDE:  
Princess Sapphire owned by Mary Ellen Randall-Arizona  
"MWF Beaujolais" owned by Karen Halstead- Kansas  
"SAF Spring Moon" owned by Kathy Cibulskas, Thanks to all 24 horses that competed in our first ride !!  
Photo: "Gismo" Paso owned by Lacey Balmer on the Highline Trail 1988.

Mail Entries to:

MISTY MEADOW FARM  
Brienne Descheemaker  
P. O. Box 1088



MAKE YOUR PHOTOS WITH HORSES NAME, BREED, AGE, RIDER, & DIVISION.  
\*\*\*\*\*RIBBONS ARE COMMERCIALY PRINTED COMMEMORATING THE\*\*\*\*\*  
\*\*\*\*\*1989 HIGHLINE TRAIL ENDURANCE RIDE\*\*\*\*\*  
\*\*\*\*\*

WASHINGTON STATE AUTUMN CLASSIC LIVE SHOW  
ALL HALTER PHOTO SHOW BENEFIT

This is a benefit show for the live show I'm holding in September. The first Washington State Autumn Classic Live Show was held in October of 1987. We had over 20 people show up and a great time was had by all. This year promises to be just as great! Show packets should be ready shortly. Write to me (Laura Pervier, address below) for info. Enclose a legal SASE for packet. If you would like to donate anything, please write (no SASE required). Please enter this benefit!

FEE: \$1.00 FULL RESULTS TO ALL, PLACING TO 10TH

Original Finish:

1. Mares-Standing
2. Mares-Action
3. Geldings-Standing
4. Geldings-Action
5. Stallions-Standing
6. Stallions-Action
7. Foal/Yearl-Standing
8. Foal/Yearl-Action

Repaint/Remake/Haired:

40. Mares-Standing
41. Mares-Action
42. Geldings-Standing
43. Geldings-Action
44. Stallions-Standing
45. Stallions-Action
46. Foal/Yearl-Standing
47. Foal/Yearl-Action

Type of Mold:

9. Breyer-Standing
10. Breyer-Action
11. Hartland-Standing
12. Hartland-Action
13. Hagen Renaker-Stand
14. Hagen Renaker-Action
15. Beswick-Standing
16. Beswick-Action
17. Other-Standing
18. Other-Action

Type of Mold:

48. Breyer-Standing
49. Breyer-Action
50. Hartland-Standing
51. Hartland-Action
52. Hagen Renaker-Stand
53. Hagen Renaker-Action
54. Beswick-Standing
55. Beswick-Action
56. Other-Standing
57. Other-Action

Type of Horse:

19. Western-Standing
20. Western-Action
21. Hunter/Jumper-Stand
22. Hunter/Jumper-Action
23. Park-Standing
24. Park-Action
25. Saddleseat-Standing
26. Saddleseat-Action
27. Gaited-Standing
28. Gaited-Action

Type of Horse:

58. Western-Standing
59. Western-Action
60. Hunter/Jumper-Stand
61. Hunter/Jumper-Action
62. Park-Standing
63. Park-Action
64. Saddleseat-Standing
65. Saddleseat-Action
66. Gaited-Standing
67. Gaited-Action

Breed:

29. Arabian  
 30. Quarter Horse  
 31. Appaloosa  
 32. Saddlebred  
 33. National Show Horse  
 34. Warmblood  
 35. Gaited  
 36. Pinto/Paint  
 37. Draft  
 38. Pony  
 39. Other

Breed:

68. Arabian  
 69. Quarter Horse  
 70. Appaloosa  
 71. Saddlebred  
 72. National Show Horse  
 73. Warmblood  
 74. Gaited  
 75. Pinto/Paint  
 76. Draft  
 77. Pony  
 78. Other

RULES: LIMIT 3 HORSES PER CLASS PER SHOWER. This will be strictly adhered to. There are two different divisions to this show. Please enter your horses in either the OF or RRH division. If your horse is repainted or just haired (even if not remade) you MUST enter it in RRH. This includes horses made into paints/pintos, etc. by removing some of the body paint and excessive white/highlights added. Halters are not required, but if you do use them, be sure they are appropriate to the horse/breed and fitted correctly. If the halter is not appropriate or correctly fitted, you will be marked down. Enter your horses (or donkeys, mules & zebras - can't forget them) in one class per section (within the OF and RRH shows). IE: an OF PAM in classes 1, 9, 25 & 29. A Park type of horse would be one that shows lots of fire & action, whereas a Saddleseat type isn't as flashy. Warmbloods would include TB, Trakehner, Hanoverians, etc. Champions will be decided by a judge-off between the first and second place finishers in each class.

| SHOW HOLDER & ADDRESS                                       | DATE        |     |
|-------------------------------------------------------------|-------------|-----|
| Linda Watson-McCormick<br>2321 NE 10th St, Renton, WA 98056 | 5/6 - 5/13  | *** |
| Laura Pervier<br>2071 - 128th Ave SE, Bellevue, WA 98005    | 5/14 - 5/20 | *** |
| Colleen Headley<br>1614 - 5th St, Snohomish, WA 98290       | 5/21 - 5/27 | *** |
| Daphne Macpherson<br>5310 - 136th Pl SW, Edmonds, WA 98020  | 5/28 - 6/3  | *** |
| Cathy von Matt<br>10750 McDonald Rd, Chilliwack, BC V2P 7L6 | 6/17 - 6/24 | @@@ |
| Kelly Lowry<br>3170 Mack Rd, Everson, WA 98247              | 6/25 - 7/1  | @@@ |

Comments: \*\*\* Enter these 4 shows for the return postage of 1 show!!! @@@ Enter these 2 shows for the return postage of 1 show!! If you enter a series of shows, enclose entry fees for all of the shows. If you want your results at the end of each show, include a SASE (legal preferred) for each show. Allow extra mailing time to Canada.

# Laurie's Drivel Column

(With added Editorial Comments by Kay - Hee hee!)

Hiya! I don't know about YOU, (and you don't know about ME, either, RIGHT...?) but if Spring isn't sprung soon, I may just wither away into - - well, into something unpleasant. Ya know? (As Ed Gonzales says..."Burn me at the stake!" Right, Ed. Praise the Lord and pass the lighter fluid. Dump a bag of Matchlight on me, will ya?)

A good friend of mine recently pointed out that I have some unusual terms I use when discussing important issues...terms I made up and use without thinking. Here are a few:

Mucho-Presto-Bingo - - (adjective) - - Quickly. To do something with haste. For example: "If I want to wear my hot pants to the live show, I'd better wash them **mucho-presto-bingo**."

Barbie Doll - - (verb) - - To "barbie doll" something is to shrink it by putting it in a washer and dryer set on "too hot." For example, "I cannot fit into my hot pants because they **barbie dolled** in the dryer." (Or, in the case of some people, "I cannot wear my hot pants to the live show because they have not yet been **barbie dolled**.")

Carp - - (verb) - - To complain. Can be used to effectively complain about fish. For example: "If I carp enough about this breaded bullhead, the waiter may bring me another entrée." (A breaded carp, perhaps?) Another example: "Diane always **carps** at live shows. I think it's because her hot pants have been **barbie dolled**."

Munch - - (verb) - - To destroy by crushing, mashing, or otherwise dismembering forcibly. For example: "Every time Diane **carps** at a live show, I want to **munch** her face **mucho-presto-bingo** even though I know her attitude is due to her hot pants being **barbie dolled**."

After much thought, I've come to the conclusion that these are "sniglets." So I'm not as original as I thought I was. Any other "sniglets" from the peanut gallery? (where did the term "peanut gallery" come from?)

Alas. Remember how I flooded my oven? (OF COURSE you DON'T remember because I NEVER told you. Ha ha). Well, I was the butt (Really...?) of many cruel jokes (Oh, *THAT* butt!) this last Christmas with my family. They are merciless. I received one **munched** (See definition above) swim fin marked, "To Laurie from Scuba-Claus." They were quite irreverant about my "Great Living Room Flood of '88" that occurred a week before XMas...it was HORRIBLE. I had to move the whole tree, the furniture (thank goodness I hadn't wrapped any gifts...they would have been ruined.) (except the swim fin, of course) etc, etc. What a mess. I went to pull back the sopping carpet and the pad underneath just shredded into so many bits of black moldy sponge rubber. (Kinda looked like month old

potato salad.) Yish. Anyway, I received a poem from my family about accusing Merryll (my 2 1/2 year old) of peeing on the rug, then discovering that the rain was coming down the wall from a hole in the roof! (I HATE it when that happens...) Poor Merryll! I was a mean mom. Felt like "Rotten Parent of the Year" after I figured out the giant puddle on the floor wasn't her fault. My family presented me with a poem and a Fisher Price "Floating Family Tub Toy Set," amidst much guffawing at my expense. (Actually, it was pretty funny when I called to report the water damage to the insurance company and the claims adjuster asked me if I had a sunken living room. I told her that was why I was calling!)

Well, I wonder if Kay has had a chance to light one up for the smoking dog I sent to her. Kay? (Actually, the little fella was a big hit at the office! I left him smoldering away on a co-worker's desk - whew! Those stoggies of his really stink!) I should ask Laura Doll how I can procure more of these "puffing pooches." Incidentally, Laura wrote and said she'd been out driving around, looking for "Flakey the Snowman" (You know, I've found myself doing that a couple of times....It starts out as an ordinary trip to the store, when all of a sudden...\*WHAM\*...I'm struck by an overpowering urge to seek out "Flakey the Snowman"...)(featured last XMas in my column) and other tacky lawn decorations, and said she took pix of a "hay-roll" Great Pumpkin, among other things. (Went by Kay's house, eh?) (Ha ha...that's very funny, Laurie! Need I remind you readers that this is the SAME woman who...and I am NOT making this up...actually has PINK PLASTIC FLAMINGOES on her front lawn!!) So far Laura has been the only contributor to my "Tacky Lawn Ornament Contest." Enter today and win a cheap disgusting prize! (Now THAT's motivation for you!)

Kay is guilty of withholding drivel. Bad Kay! For SHAME! (A drivel cancel?) Please include it in this ish, O.K.? It had one of Linda Sturhann's reptile stories in it, as I recall. Please don't let her think we don't appreciate her stories or we'll end up with a rattlesnake in our mailbox. (Kay's responsible. Send it to her. Mailbox's nice and toasty this time of year, I bet...)(O.K....I've let you babble on long enough, I think. Didn't anyone ever tell you it's not nice to fool with someone who has Supreme Editorial Power! You seem to have forgotten that you, WITHOUT WARNING, sent Linda's stories AFTER the rest of the Drivel had already been printed! Tsk tsk! So...I did NOT cancel the drivel - YOU missed your DEADLINE!! But, since you have decided to bring your tardiness into the open...here is the "Mystery Drivel" in its entirety.)

Oops! Forgot that I promised you all a selection from Linda Sturhann's gallery of reptile stories...(Remember "Night Gallery?" Ish! I loved it). Anyhow, here's Linda:

"Dear Laurie...Here are four more stranger than fiction Herpetological stories...If you don't want any more weird letters arriving at your house, you can drop me a line or put a subtle note in The Model Rag...'Linda, knock it off before I throw up' might be appropriate."

Now, on to our story....

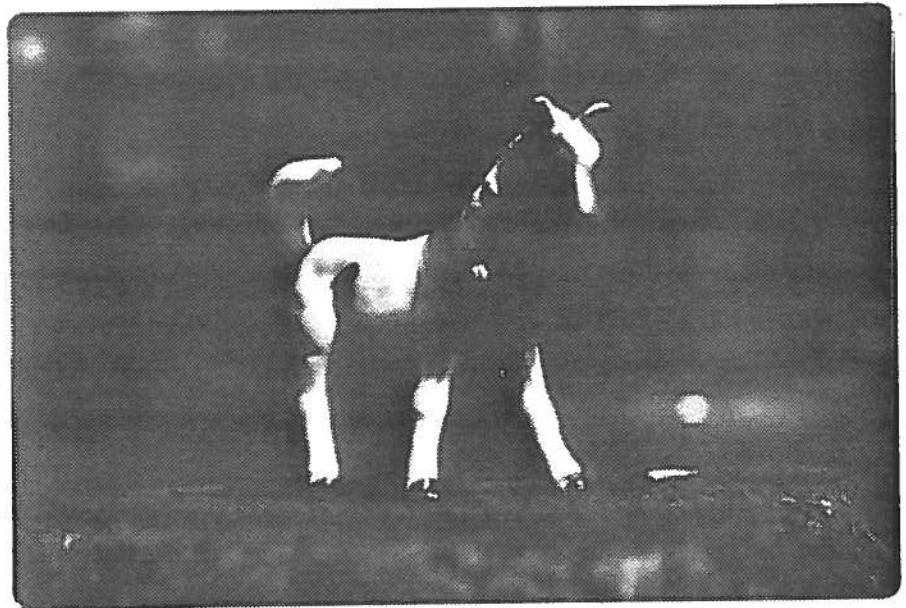
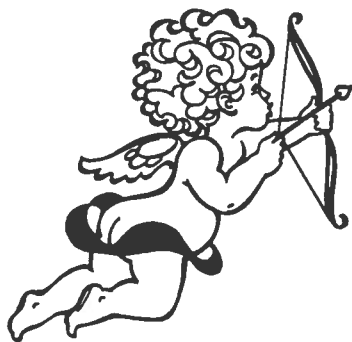
"A medical student who frequently imported snakes and lizards used his mother's station wagon to transport his reptile wares and once in a while they would escape. One afternoon, his mother was driving to her garden club in the station wagon. Suddenly (WITHOUT WARNING) one of the passengers in the back seat screamed and announced that a huge (4 foot) lizard had crawled from under the seat. The student's mother said not

to touch it because it bit and stopped the car abruptly in the fast lane of the highway. As soon as the car had come to a halt, all the women bailed out of every door. The lizard, being no fool, crawled back under the back seat and dug in with its claws.

The student's mother was used to such goings on and calmly got a burlap sack from the storage compartment and began crawling around trying to drag the lizard out so she could confine it in the bag. A policeman came upon the scene. He told the student's mother that she couldn't stop in the fast lane and she said that she didn't care and had to catch the lizard under her back seat. The policeman decided that she had a few early cocktails and should blow up the little balloon, but instead she handed him the bag and finally pulled four feet of snapping, hissing, poisonous reptilian fury out from under the seat. The policeman dropped the balloon and the bag, got in his car and left hurriedly. I guess he didn't want to explain this one to his desk sergeant."

Whew. What a story. I guess it's a real story, too, from what Linda tells me.

Guess what!? We DO have a "Bow-Wow" of the issue...(by the way, a "Bow-Wow" is defined as a model, remade or otherwise, that is in SERIOUS trouble, conformation-wise. Send in YOUR embarrassing first remakes for publication today!! What the heck. Nobody's perfect, right Kay?)(But some are less perfect than others...) Anyhow, here is a ~~horse~~ that Karen Gerhardt sent in.



Says Karen: He's the horse most likely to be mistaken for a dog!" She goes on to say how she was showing this horse (Dog?) in 1974 and it was her "number one model." Anybody else have some ex-champions that are pre-1979 or so? Let's see 'em! (Send SASE for return of pix...put your name and addy on back if it's not there already!) Also need write-ups on remakers - I'm out of "Remaker of the Issue" candidates You need not take custom orders to be eligible for "Remaker of the Issue." Tell all the remakers who want "Rag Recognition" (similar to the Black Plague...) to send an example of their work & small info paragraph about themselves to: Laurie! O.K.?

Also, those of you who attend my "Homestyle" Live Shows, see our calendar of events for 1989 in "It's Showtime" section of the Rag!" (Well...that's the "Mystery Drive!"...at



least this will get Ms. L.J. off my back! Whew!)

Haven't received any new weird toy ads. I honestly haven't had the time to peruse the zillion or so tot store flyers that deluged my home during the holidays. Laura D. writes: "I got The Rag yesterday and I was scared to see that I own two of the strange toys you had ads for (The Voodoo Doll and The Mad Scientist)! I love the Mad Scientist - you make monsters over these plastic skeletons, then drop them into tanks of ('acid') solution to 'sizzle the flesh off the bones'." (I have a feeling that this says a lot about some of our subscribers...) Kay, do you think I should get this toy for Keegan? (Keegan is a toddler (Read "juvenile delinquent in training"...)) I take care of occasionally...his idea of fun is to throw Meryll's toys into the lit fireplace...)(Truth be told, it wouldn't surprise me if Keegan gave the idea to Mattel in the first place...)

Take comfort, Laura. You are not the only RAG subscriber that owns The Mad Scientist! (I'm honestly surprised!)(Let me rephrase: I **KNOW** that this says a lot about our subscribers...) Ms. J. Hamilton, of Houston, Texas, actually SENT THE ENTIRE INSTRUCTION BOOKLET for the "Mad Scientist," the front of which says "Get ready to operate." Inside the first page it tells us to "Read on, Yuck lovers..." (Perhaps we should have that as an introduction to The

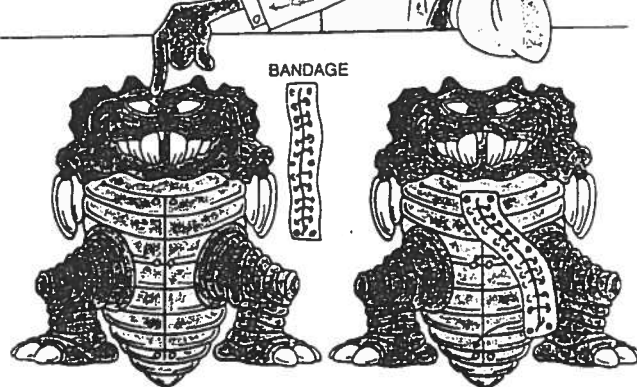
Rag - - or perhaps just MY column, Kay?) In any case, just in case you don't believe me, I will include a page of the alien booklet. Ugh! Ugh! Ha ha!

Hurray! D.W. Fisher of Clayton, Idaho (population 43...I'm NOT kidding) sent in her



NOW WE CAN CLOSE-UP THE ALIEN

13. The last organ to place is the Gutball. Add more Alien Blood. You may want to use fewer organs and add more blood for real gross fun when you pull out the organs or try them in different positions.



1. With the bandage near by, close-up the alien.

2. Press on bandage to keep incision closed.

3. Place in alien body bag to take to friends or to store. Dissect the alien (on the mat) in front of your friends. Ugh! Remember the Alien Blood glows in the dark. Ugh! Ugh!

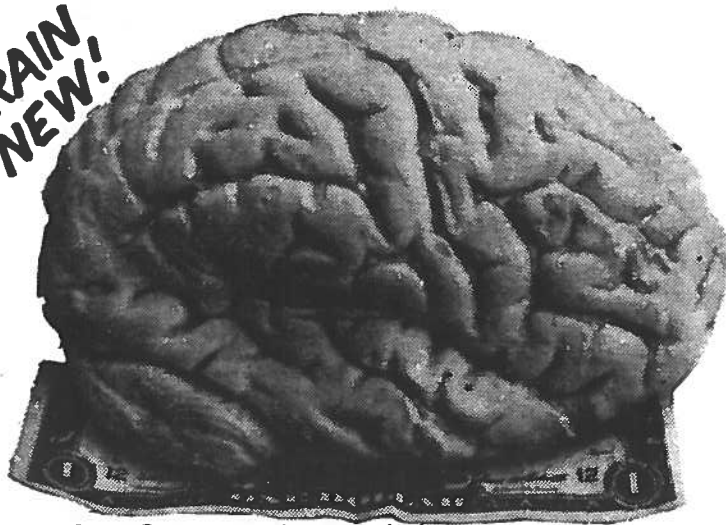


entry in the ongoing "Weird Pet Contest." Above is a photo of "Yolanda Yolkless," the cholesterol free chicken with "Mr. Homegrown" the rooster. Says Diane, "We are not sure about her family background; she was given to us by a farmer who lives near the Idaho Nuclear Engineering Lab...maybe "Yo Yo" made one too many test flights over the reactors. She seems normal -- except for the strange green glow at night in the henhouse..." Join the crowd, Diane. (Why? Do you have nuclear powered poultry around your place, too?) I live in "melt-down range" of San Onofre Nuclear Plant. Every so often we get an "evacuation plan" in the mail from the plant. Tells where we're 'sposed to go in case of a "nuclear oops." (The Pepsi Syndrome) The sad part is that in order to get to the evacuation center, we have to go up I-5. Keep in mind that I-5 is usually a PARKING LOT even when it's not rush-hour. (Am I wrong, Kay?) (She's not wrong, folks). In any case, I guess I'm destined for vaporization if the plant goes kaput. (My brother has a T-shirt that features a fluorescent fish skeleton and says "SAN ONOFRE BEACH CLUB...FOR A GLOWING TAN.") But I digress. (As usual.) Anyhow, Diane also writes, "You can't rollerskate in a buffalo turd...oh, I mean HERD." (Thanks for that important safety tip, Diane...)(We'll take your word for it, Diane.) Thanks, also, for the GUMMIE-FROGS. My hubby Bill made short work of them, with no apparent ill effects.

Speaking of FROGS...I got a rubbery flubbery one in the mail from an anonymous sender. He's quite fun to fladdle-laddle. (Technical term, folks.) (I hold him by one leg and shake him gently and he goes, "fladdle-laddle-laddle-laddle"...ya know...like in a cartoon...) Who (whom) ever sent it, 'fess up! I have a glow in the dark slug from the Archie McPhee catalog with YOUR name on it. (I confess, I confess! I had ABSOLUTELY NOTHING to do with it!)

Got a new catalog from Archie McPhee featuring an item that seems to be in quite short supply around here...I know that I need a new one...

**BRAIN  
NEW!**



**9150 BRAIN.** We think you'll like this. And who couldn't use an extra one? It is lovely, soft rubber & life sized...or perhaps larger than life when compared to some people. With deep detailing, this is a "must have" for anyone needing more gray matter. Size is about 6 1/4" x 4". We showed this to a brain surgeon & she said it looked like the real thing. \$6.95 each

Also - for some of those "blind" model horse show judges out there. I'm exempt from needing these...(right?)



**8467. RUBBER EYEBALLS.** The best eyeballs in the universe. Heavy duty, all purpose, full color 1 1/4" diameter. Amazing detail (is that the optic nerve coming out the back?). Plus, they bounce! Bag of 6. \$2.75

(Kay here - I have a few morsels to add. Daphne McPherson has requested an update on TFTSLTTJTLFSF. (For the uninitiated, this stands for The Fund To Send Laurie To Tiajuana To Look For Stuffed Frogs.) Let's see...including the peso that Daphne contributed and the quarter, dime and two pennies that I scooped out of the couch, that gives us a grand total of....**ONE PESO AND 37 CENTS!!** Hmm...not so hot. Maybe we should turn this into the Fund To Buy Laurie A Postcard Of Tiajuana. O.K. guys (hombres)...let's see some response! Poor Laurie is going to feel rejected!

Oh - from Liz Strauss comes the address for the free **CHICKEN BOY CATALOG!!** Here tis: Future Studio, P.O. Box 292000, Los Angeles, CA 90029. Oh no - a rival for the Archie McPhee catalog? \*GASP!\*

Well, enough of this for now. I've run out of Insect Pictures so I'll have to figure something else out for my "Grand Finale" of each column. Any suggestions? Here's the quote to live by: "I don't subscribe to The Model Rag; I prescribe!" - J. DeCuir -

Send more stuff! If you've sent stuff and I haven't used it, write and remind me!! Bye  
-Laurie-

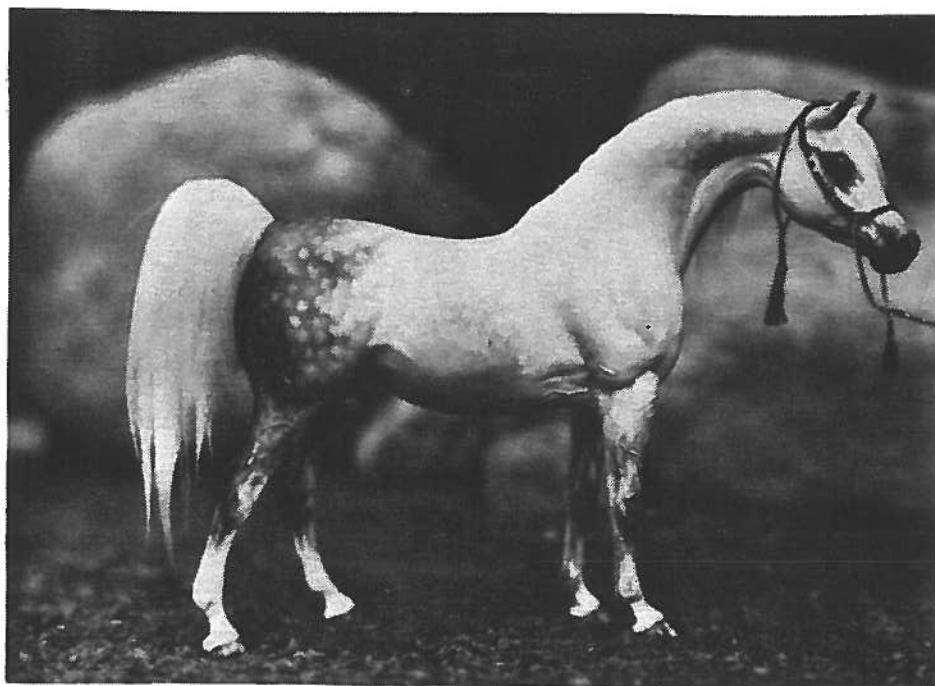
Normally, this column is titled

## Remaker of the Issue

However, I prefer to call it the "Holey Moley does that girl have talent" column... and the real bummer is that she no longer takes custom orders. But I couldn't let another issue go by without honoring our our (subscriber)

### SARAH MINKIEWICZ

Here is a photo of a horse Sarah has done for your drooling pleasure:



# CHEAP THRILLS

Send submissions to: Gale Good, 1359 Sherrill, Anaheim, CA 92804

First off, I'd like to thank all those who wrote in to express their appreciation for the 1988 Breyer Run of Model Horses in the last issue. I've discussed it with Heather and this will probably be a regular year end feature. The 1989 line already is shaping up to be another huge one what with 35 new models in the regular line alone. The first Special Run of the year is the overrun of the Just About Horses chestnut running stallion. The mane, tail and legs will be painted black at the factory for these approximately 150 pieces and offered by Black Horse Ranch at \$23.00 (UPS included) so get your order in fast.

1988 also proved to be the year of the DECORATOR! Arlene Winter in the Fresno area luck upon a Wedgewood Running Foal at a recent swapmeet. Her first Decorator! I found two Decorators and was given two others. The last Decorator was the elusive Wedgewood 5-Gaitor. Karen Grimm bought a collection of Breyers early this year which contained two Decorators. She only needs three more to complete her collection of all 20 Decorators!!

Another year end fairy tale happened here in Southern California. Once upon a time, a collector sent a photo of a woodgrain Fury to the Breyer company and asked for information on the model. She was told Breyer never made that particular mold in woodgrain. After two more were found--also on the west coast--they conceded that maybe it had been made after all. Their records are unfortunately far from complete. Well, Sheryl Leisure's husband, Brad, surprised her with several Breyers for Christmas that he found at a local swapmeet. And wouldn't you know it...there was another one of those woodgrain Furys in perfect condition! Good going, Brad.

Several of us were at another swapmeet when Robin Lee pointed out an old Hartland box complete with the front panel cover to Heather Wells. It contained a mint set of the 7" appaloosa family. This was a real find. The boxes are usually the first thing to be discarded when someone buys the horses. Two months later, Heather happened upon the old Breyer grey Bucking Bronco.

Kathleen Rose had the shock of her life not too long ago. While at an antique store, she and her sister, Karen Perkins, were looking for model horses. Kathleen (who collects Hagen-Renakers) had just teased Karen (who collects Breyers) by saying, "Oh, look a Decorator", when she saw a Hong Kong model. So when her sister said, "Kathleen, a Bedouin", well she didn't believe her. Sure enough, there sat a Hagen-Renaker Bedouin in nearly

mint condition. It was complete with rifle and missing only one tassel!! Kathleen almost passed out. They couldn't get the clerk to open the case fast enough. A real steal for under \$100. Congratulations, Kathleen!

I happened to glance at a man's collection of windup toys and spotted what looked like a Poppytrail Arab. For those of you who don't know what Poppytrails are, they're heavy ceramic horses made in the late 50's and 60's by Poppytrail Pottery (which has some connection to the Metlox company because their beveled sticker can be found on some pieces). They made approximately 20 different molds and several came with ceramic carriages, wagons, sleds, etc. on a metal base with wheels and harness shafts. The prices generally run from \$6.00 (less if broken) to \$25.00 or \$30.00. They don't appeal to everyone but I have a few because I collect everything. The Arab is a nice piece with a molded on headstall with tassels. I'd seen a photo of a white one and was able to identify the piece because of that. This particular one was a palomino/tannish color and the eyes were detailed almost as well as Hagen-Renakers. When I inquired about whether or not it was marked Poppytrail, the woman seemed puzzled as to why her husband had this in with his windup trains and things. After patiently waiting almost two weeks for them to decide, they finally agreed to sell both the horse and the wagon (which was actually a planter) to me for \$15.00. A different sort of birthday present to myself.

January and sometimes February are usually poor times to find models due to the weather. But don't despair--better times are coming. Send in your stories about finding those treasured bargains.

About three years ago, I wrote an article for the Model Horse Gazette on Treasure Hunting with regards to models. A couple of months ago, I received a letter from West Germany (!) from a girl who had read the article and wanted to buy one of the pieces shown in the photos of my bargain finds. Unfortunately, that piece had already been traded but it's nice to know one is internationally read.

One last word: when buying, trading or selling models, the more information you give, the smoother the transaction will happen. Don't just use numbers; Breyer used the same numbers two or three times for different molds or colors! Some models came in both matte and glossy finishes. A person might pay a little more for one than the other so it is<sup>n</sup> important fact to mention. The Appaloosa Performance Horse came in three different patterns and colors. Save yourself a lot of correspondence and state which one it is. Always note condition--this will affect the models value. And when buying or trading for an expensive model, always, always ask to see a photo and get the model's condition in writing. It could save a lot of anguish later on when the model does not live up to your expectations.

*J. Dale*

DECEMBER 1988

FROM THE DESK OF  
**MADELINE**

co/of Cheryl Munde  
1025 Sheffield Pl.,  
Thousand Oaks,  
CA 91360



### TRAVELIN' WITH MADDY . . .

Cathy Von Matt shared with me pictures from the Thunderbird International close to Vancouver, CANADA, this past summer!! The one pic that stood out the most, was one of Sue Rowe with a very serious judging expression that could knock a buzzard off a sh-- wagon at a hundred paces!! And to top it off, she wore a shirt that said "Before you ask me, is it really important?" Now don't let that all fool you, those of you who know Sue, also know that she's the type of person you can't take seriously!! Or can you? After all, she's also the one chasing my pink piggy at IMHCC with her cowboy-riding mastadon!! Anyone out there selling straight jackets?

Next target: California Live held in Riverside, CA (of course, dummy) by Heather (G.? any relation to Herbert?) Wells. Get it? H.G. Wells. The judges were great, the show committee was excellent (Heather, Lani, Karen Grimm, Gale Good, Cheryl Munde, and Doc). The show hall was very ~~was~~ lavish and luxerious with solid, sturdy, oak tables. Kathleen Rose with all her H-Rs was thankful for that! Very beautiful and unique rosettes. The show went smooth and quickly as the entrants were paying attention to the upcoming classes! Yay!! A great big applause to all the wonderful showers who came! On the last day, right before the championships, Cheryl came charging in as an Executioner. No, she was wearing a costume!! Swinging an axe, there were many concerned faces! But, no casualties. Look out Kathleen!

An illegal alien to CA from some hick town in Indiana, Laura Conaway began her model showing two years ago with a remade unicorn showed as a Trekehner, she remade herself! At CA LIVE, her first major Live show, she proudly brought home many championships, blues, reds, & yellows as well as many new model additions to her collection. Her newly acquired bay appaloosa rrrh by Laurie Jensen won Reserve Grand Champ. (Needless to say, all the way home I never heard the end of it!) And now, we have a talented young writer on her way up to Pulitzer Prize winning novels!! Next page she humbly submits one (and only) of her best!! thank you Laura, for sharing it with us all.

## *The Ivory Mare*

"Oh please! *Please* let me ride!" the girl wailed, thrusting a damp food-stained dollar into Ken's reluctant hand. "I've been saving my allowance for *years!*"

*Yah, right*, Ken thought. *Probably more like two weeks.*

"*Please!!!* My mommy said I could!" she whined, her lower lip trembling in a pitiful pout.

"Oh, all right already. I don't see why not. Just be careful; I'm not supposed to let kids under six ride."

"I *am* six!" she argued, the fingers of her right hand crossed behind her back.

"Okay, okay, if you say so. Now you just pick your horse so I can start the ride."

Smiling triumphantly, the girl shifted her gaze to the four remaining mounts that stood obediently in front of her. Immediately she was drawn to the ebony-black stallion that stood patiently in front of her. He was huge -- a good six inches taller than any other mount in the area -- and was dressed in the finest medieval saddle hands could make. He was most certainly fit for a princess, nonetheless a girl as fine as herself.

"Him!" She commanded, pointing. Suddenly, another horse met the corner of her eye just as Ken reached for the stallion's bridle. The unexplainable beauty of this fifth equine made her cat-like blue eyes widen and she immediately mandated, "NO! I wanna ride the white one!"

"Easy, girl! Your shouting can start a stampede! Now calm down and I'll get that mare for you," Ken scolded.

Unaffected by Ken's tone, the girl watch in admiration as the ivory-white mare made her way to Ken. She was much smaller than the stallion, but more refined and feminine in appearance. She carried her head high in pride, her small pricked ears catching every murmur. How noble she was!

"Yah, I'll ride her. I mean, a *real* lady gets a white horse. Only the bad guys get black horses," she said matter-of-factly.

"Oh, yah, sure," Ken said. He groaned silently as the mare came to him. *Dealing with the kids in this job could make Mister Rogers wince*, he thought as he gave the girl a leg up onto the mare.

"Now you just hold on real tight to the reins, and Ivory here will do the rest," Ken said as the pair started off.

The girl eagerly nodded her head and swiftly kicked Ivory in the ribs. The mare, patient as always, ignored the greenhorn's fumbling and slowly began their journey. The girl, however, wanted *speed*.

"Oh, c'mon Ivory, you can do better than *that!*" she complained, landing another blow in the mare's rib cage.

This time the mare took notice and reluctantly began to increase her stride. The girl, satisfied, leaned forward into the mare's decorated mane, the ribbons tickling her cheeks. She was thrilled at the feel of control over such a powerful beast and guided the mare over mighty streams and through rocky trails, her mount never once changing her stride. The world seemed a blur to the girl now, only fuzzy images of bright light and human faces. A beautiful song that reminded the girl of a nursery rhyme she had learned as a baby greeted her ears early into the ride, and unknowingly she hummed along with her eyes closed in pleasure.

To the girl's brief dismay Ivory quickly slowed down to keep in contact with the other horses and at this time the girl took the pleasure of observing the world around her. Other riders on lesser horses were both in front and behind them, but none looked as royal as this pair. What fools the others had been not to have chosen Ivory! Even the well-dressed ebony stallion, who had been following along riderless, looked plain in comparison. Ivory and her young rider were by far the finest of the lot!

The girl's train of thought was suddenly disrupted as Ivory began to slow drastically, her stride never once breaking its rocking-chair rhythm. Ultimately came to a complete halt and would not budge, despite all urging.

"Okay, young lady," Ken announced, "it's time to get off."

A frown on her face and a pout on her lips, the girl dismounted Ivory, the carousel horse.

*Laura Conway, October 17th, 1988*



# PEOPLE, PLACES, & THINGS

Hey -- we have a few BELATED Birthday greetings: **HAPPY BIRTHDAY** to Michael Wells, Gale Good, Laurie Jensen, and Karen Grimm! Plus any others that we've forgotten!

Here's an address change for y'all:

Patricia Pillaτζke - 911 11th Ave N., Fargo, ND 58102

Our sympathy is extended to Kathleen Maestas, who lost her mother December 20.

Heather wants original artwork sent to "fill in the gaps"...Make it small and use dark ink so it will reproduce well. To all you closet artists - here's your chance for fame...(no fortune...just fame).

Well, Kim Harvey is not the only animal imitator in our merry little group! Our own Laurie Jensen called me (Kay) just the other day to share her "Cat Throwing-Up" impression...it sounded (and I quote) like this: "Hu-WAH, Hu-WAH, Hu-WAH....  
**KHAACK!!**"

A remaking clinic will be held to benefit The Model Rag and Western regional Congress on February 25 in Riverside, CA. The instructor will be Laurie Jensen and the cost is \$20.00. Time: 10 am - 3 pm. For additional and registration by phone call (714) 661-1116 or write to Heather or Laurie for details.

Kathy Maestas' newsletter had an easy to understand synopsis of the new '89 horses...good job, Kathleen!

Laurie Jensen is soliciting (no, Kay, not THAT kind of soliciting...you warped person. No takers, Ha Ha!) **FOR DONATIONS** to sell to help pay for W.R.C. Anyone who sponsor a class (\$5.00) or donates a model or tack to be sold in pre sale or auctioned the 13th of May is entered in a raffle for a Jensen drastic remake...so send your donations and sponsorships in to Laurie today!

Congrats to Black Horse Ranch on their new addition: Karen & Peter's maiden mare Scammer had a chestnut filly at 8:30 am on February 1st!!



Well, Peanut Gallery, you've been busy...let's hear what you have to say:

"We're enjoying the RAG very much -- we're just sorry it's taken us so long to subscribe! (Don't hit us! No! AUGH!!) But we're here now, and now you'll never be rid of us -- nya-ha-ha-ha!!!" - C.Y. -

"I love the Rag! It's a breath of fresh air when it arrives every month." - K.T. -

*In response to our "Renew or Else" threat* - "I am! I am! Have mercy-no rubber cockroaches, please!" - D.M.

*And also*: "How could I turn down such a sweet request?" - C.N. -

"I know The Model Rag has a large following. Since I don't want them to 'sic the slugs on me & get slimed to death' - enclosed is my renewal!" - D.R. -

"Ha ha ha. Ya think you can scare me with that "Renew or Else" - ha! I've got 2 children - 1 1/2 & 3 years old. I'm IMMUNE to threats made by adults. The reason I'm renewing is to have something else to read besides the J.C. Penny's Christmas Catalog & Beatrix Potter Peter Rabbit books. So there." - S.R. -

"We give in-WE GIYE IN! We wanna subscribe to the RAG!...we gotta have that zany model fix!...we get sick kicks from Fred Horse, idol of dozens! 'Crunchy landing' has become a real catch phrase here (and is apt to stay that way 'til we get a vacuum cleaner...)! And Kathleen Moody's cartoons are a joy (and too, too true)! And then there are the sales ads - bushels o'big bargains, but downright dangerous to read ('I want that an' that an' that an' THIS an' that an'...')" - A.D. & C.Y. -

"I've officially given up the other newsletter I subscribe to. It's a lot of money to put out (subscriptions) & then to wait forever to receive it & (ads) to find out that your ad hasn't been published- especially when you mail it 1 month before the deadline!" - L- -

"I think my favorite section is "The Litterbox" - esp the Dec. '88 issue. I really appreciate the info on new models (lets you plan ahead, with plenty of time to get cash together or make room!) and the special runs that are available. Your list of the '88 Breyer line was great, too. I found out that there were a few SR's that I didn't get!" - C.N. -

"Enclosed is my check to renew my subscription to "The Model Rag." Please remove my name from the hit list. (I am a little curious to see what "or else" means though!" - K- -

"I guess that I'll enlist for another year. It is still my favorite model publication - I live for the sick stuff! (the model info is great too though!)" - L.A.D. -

"Renew or Else' has worked again! My check enclosed - actually, I wouldn't miss a single issue, the RAG is the only publication that shows what us model horse people are REALLY like!" - L.F. -

"Got my 'Renew or Else' note - I'm sending my check! I bet if Laurie sent those notes out, they'd be 'ReNEWT or Else'!" - I.S. -

"I LOVE The Rag! It's the weirdest model mag out & the most fun." - B.C. -

"Being the inquisitive individual that I am, upon receiving my threat renewal letter, I was very tempted to instead of writing my traditional MR check, that I might take my chances and try the "or else." I mean things are dull and boring up here in the Outer Mongolia of California. Why not tempt fate? But I love getting The Rag to calm my nerves and cure my insanity - there would be a hopelessness without it. So - enclose my check for \$15.00." - M.D. -

"My re-sub is enclosed (Please! Don't give my name to the "Archie McPhee" catalog! - altho, those cockroaches would be very appropriate for many people around here). I'm not sure I could live without my bi-monthly dose of lunacy - particularly Laurie's column." - J.B. -

"Here is my renewal for '89. I see you are still threatening people with the "Renew or Else" message. After two years of reading TMR you don't have to make threats because it's so adicting, what with the humor and with the addresses for special runs, there's no way I'd let my subscription lapse!" - M.B. -

"Attleyey ooma!! What's this I hear are you quoting from the Archie McPhee catalogue? Running the 1988 Slug-Bake-off without my sending in my recipes for Slug Brownies, or Slugs In Aspic? Running pictures of your stuffed frog-band (and me with no pictures of my old alligator playing the maracas!)? Why do people keep asking me why they haven't seen MY ads in the Model Rag yet? Methinks, varlets, that I dost miss something.....So, do you let people who wear black leather, spikes, rubber, and cockroach killers, who occasionally dye their hair fushia as well as red and blond, and who have been know to craft their model horses their own little eyepatches, guitars, and multi-colored mohawks into your agust society? Let me put it this way, do you let in strange people with \$15 to spare?" - J.F. -

Got some fun quotes from Ardith & Corky that came up during their last photo show -

"Here, fold him in half." - Corky

"I like him - he makes my nose bubble." - Ardith

---

Kay here - I hear that I'm going to have some company up here in the "frozen wasteland" in the near future! My sympathy (just kidding!) to LEE FRANCIS, who writes, "We are being promoted, and moving to Pittsburg early next year (eeeeek!!!)" That's some promotion, Lee! And from another warm climate, too.....burrr.....Well, let me know when you arrive! We'll get together mid-state!

---

Heather got an letter the other day - the envelope was addressed to: "Subscription Queen." Cute!

---

Got a note with an ad for this issue from Joan Berkwitz - written in blue CRAYON on a piece of notebook paper: "Typical household of a 3 year old. I can't find a pen anywhere and must catch the mailman in about 3 minutes..."

---

O.K., we have a question for all you readers out there. As most of you know, we made a blunder in our premiere issue by putting a picture of a (\*gasp\*) model horse on the front cover. We later vowed that we would never let this happen again - dried frogs, deviled eggs and jumping slugs shall be the things that the Rag features! And now, a dilemma - we have gotten our paws on a picture of, yes it's true, that most famous of padded pinto ponies - MISTY!! (In all her stuffed glory...) We would like to use this pic for our first page BUT - we have foresworn that never again would EQUUS appear upon the hallowed cover of this fine publication. Now the question:

Should we resign this famous four-footed filly to the pages of (\*shudder\*) Laurie's Drivel Column

OR

Are REAL, LIVE, DEAD, STUFFED horses exempt from our ban on equine covergirls?

We want YOUR decision on this earth-stopping issue! Please send your vote (either "YES - Play Misty For Me" or "NO - A Horse Is A Horse, Of Course, Of Course") to Kay Fowler, 160 Stony Bank Rd, Glen Mills, PA 19342 by March 15, 1989. You can see the result of your choice on the cover of our next issue! Come on! Participate in one of the few democratic actions of this magazine! Hee!



he



itterbox



H-R already has out their new items:

**ALL NEW MOLDS:**

- Abyssinian
- Scottish Fold Tom, Tabby & Kitten
- Basketball Cat (Stands on two legs)
- Pouncing Cat (lying)(both these have play balls)
- Australian Shepard
- Hen & Rooster
- Arabian (on base)(white w/grey shading)
- Rear. Mustang - grey dun
- Rear. Mustang (different mold) - buckskin
- Snail
- Prerodactyl

**OLD MOLD, NEW COLOR**

- Sitting Cat #324-1 black
- Lying Cat #326-1 black

**STONEWARE**

- Cardinal
- Tree Frog (w/ or w/o crown)
- African Elephant
- PLUS LAST YEAR'S
- Pelican
- Mallard Duck

For the true H-R collector...mini wise...

The Terrier #079 is out in a much lighter shade, almost cream color, first issue was dark brown. The collie #359 also comes in many shades...dark color is in most shops now! The piano frog #814 is very light colored green. Papa Bunny #2015-1 and Mama Bunny #2016-1 with red hearts came out last year...now they are both holding GOLD hearts! The Green Dragon #892-1 is a lighter green! And last but not least...the Rocking Horses #990 & #991 had grey mane, tail, stockings and spots...lo and behold I found them in light brown at one store. So folks...Keep your eye on the minis!!



New Breyers...hope everyone has seen the NEW colors...well done! Heard that the catalogs might be out sometime in Feb. But the colors are good...We've only seen eight so far but they are nice!! Glad we got good reviews for Gale's break-down of all the Breyers put out in 1988...look for a 1989 list in issue #6!!



Hartland Collectables has a new '89 line of horses out too! (Hopefully we'll have color sheets). Aren't these colors great? Don't you love Jewel and Jade...good work Kathleen Moody!! Hope you'll be able to attend either the Kansas or Calif Hartland live shows this year! I know those of us here in Calif are looking forward to meeting Paola in July at Napa. We must get a dose of Hartland...heard there's going to be a wine tour on Sunday...great idea!! Oops! Speaking of LIVE SHOWS - Forgot to put this in Showtime: Florida Model Horse Club's annual live show is planned for March 25 at Davie, FLA (near Hollywood - Ft. Lauderdale) Anyone interested could write to Lee Francis, 12416 SW 203 Terr, Miami, FL 33177.

Hurrah! "Roy," the new Belgian introduced by Breyer for '89, was sculpted by none other than Mr. Francis W. Eustis!! Personally (Me...Laurie)(You...Laurie, Me...Kay) I'm waiting with bells on for that one. Also, the sculptress for "Rugged Lark" is Pam Talley Stoneburner. "Rugged Lark" will be bay with no white markings. Both of the above models will be traditional size. The new Limited Edition model for '89 is ABDULLAH the Olympic Jumper...the Trakehner mold in grey.



The special run Triple Crown Sets I and II are still available in limited quantities from Hobby Center Toys, 7856 Hill Ave, Holland, OH 43528. Order either Set I or Set II for \$25.00 postpaid. Both Sets costs \$45.00 postpaid. These are the Classic TB's in different colors than the regular runs and are quite nice.



Western Regional Congress: 1989 has been awarded a Breyer-Reeves sponsorship! A set of five special run models, dealer catalogs, subscriptions to Just About Horses, and rosettes for the collectors classes are being provided by Breyer-Reeves. Be sure to attend W.R.C. on May 13-14, in San Clemente, California! For show info, send LSASE to L. Jensen/WRC, 32891 Calle del Tesoro, San Juan Capistrano, CA 92675



Franklin Mint is doing a small series of different types of horses, from different countries!! And a large mold of 2 Arabs running by Pamela DuBouldy (Black Beauty, etc) is available. Pricy but lovely piece! And last but not least, they have a horse and girl series - the first one was called "First Prize" and the next one is available (can't remember name). Franklin Mint is busy with their horse models. Anyone interested can call: 1-800-523-7622!!



There is a new and exciting newsletter out and TMR would like to suggest it to our readers who are looking for another publication to subscribe to. The layout is very good...really a nice looking mag. We wish Paula Hecker and her husband David and staff the best!! So folks, The Hobby Horse News is the name of the newsletter and you can find Paula's addy in the Miscellaneous section of this issue. Good luck THHN!



Kathleen "One More Bun" Moody is expecting in late summer. Rumor has it that she's going to be featured on our cover...this is getting to be redundant. Perhaps our own Kay Fowler is next???! (Kay here - DON'T HOLD YOUR BREATH FOR ANY BUNS HERE! We're still just testing the recipes! Hee!)



Whoops! Forgot an ad: PINE RIDGE STABLES has it's new 1989 s/d list available. Lots of great horses for reduced fees. Highest fee is 15 cents. Lots of changes, so get your new copy today. Send SASE to: Leah Fuller, 421 Stevens Rd. #24, Eagle Point, OR 97524

Sneak  
Peek...  
'89 Breyers



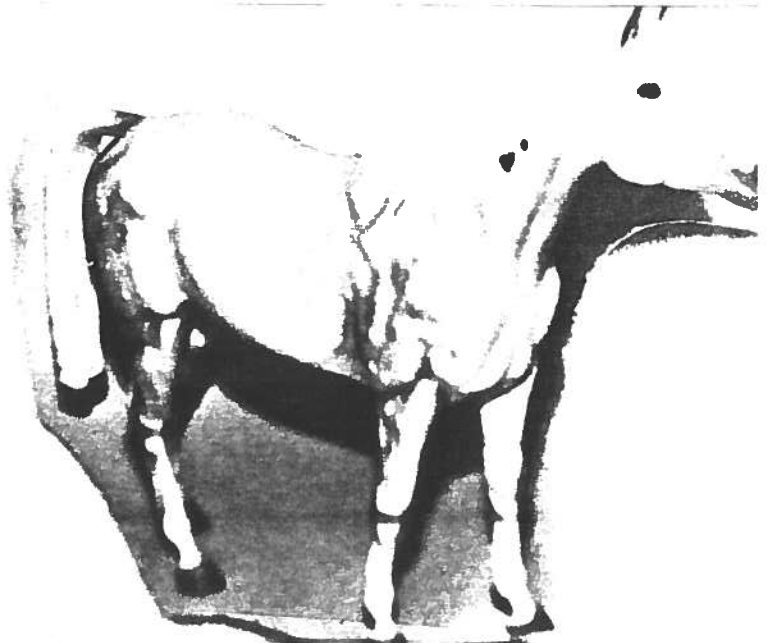
Royt



↗  
Prancing Arab Stallion



Shetland ↗  
(cute!!)



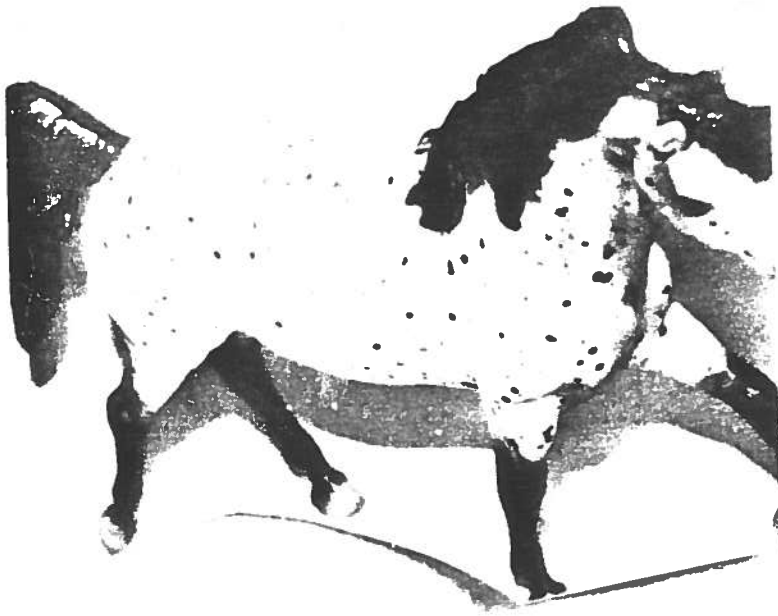
Abdullah ↘



Roy.... again! ↗



Action foal ↗



Majestic Arab Stallion ↗  
(oops... I cut his nose off)



THE END....