

The INTERNATIONAL MODEL HORSE JOURNAL



DUST-ON-HOOFS-MAN
Owned by La Gata Luna Ranch
Chicago, Illinois

50c

FIRST CLASS

1977

PM

JUL 6

NORTH

SUBURBAN



Meg Walker

6604 Brookfield Ave.
Columbia, SC 29206



Vol 1 Issue 5

May-June 1977

In This Issue

How to Enter a Model Horse Show

Part 2 or 3 part story

How to Get the Most for Your Postal Dollar

Meet David Page - Tack Maker by Hobby

Know Your Hagen Renakers (Cont. from April Issue)

Sally Wells Got Hitched

Plus Regular Features

EDITOR - Marney J. Walerius
PUBLISHER - Horseman for All Ages

Contributing Reporters:

Patty Gray - Nashville, TN
Sandy Tomezik - Columbia, MO
David Page - Chicago, IL
Kathy Wells - Eden, NY
Sandy Crosse - Treynor, IA
Gil Jones - Lansing, MI



Rates per Issue:

Club Directory: \$1.00/yr.

Buyers Guide - \$2.00/yr.

Classified Ads - 5 cents/word - 100 word limit.

Model Showers Ads - Without pictures ¼ page \$3.00 or ½ page \$5.00. Full page \$7.00.

Model Showers Ads with pictures -

¼ page wording limited \$3.00 (1 picture), ½ page wording limited \$5.00 (2 pictures), and Full page wording limited (3 pictures) \$10.00.

Commercial advertising rates upon request - write IMHJ, 626 E. Church St., Libertyville, Ill. 60048.

Subscription: \$5.00/8 issues a subscription. Sample copies or Extra Copies \$1.00 each.

The International Model Horse Journal is published monthly by the Horsemen for All Ages, 626 East Church Street, Libertyville, Illinois 60048. Subscription rates are \$5.00/year and 50 cents per single copy. Unsolicited manuscripts and photographs are welcome and all will be considered. They must be accompanied by sufficient return postage, and we assume no responsibility for loss or damage thereto. Copyrighted 1976. Written permission must be obtained to reproduce anything printed herein. Advertising rates upon request. Call (312) 362-5555 (days).

KNOW THE HAGEN RENAKERS



Arabians: Ferseyn B697, Sheba B698 and Sherif B658.

Have you ever met Ferseyn? If not, you can get to know him right here in IMHJ, because we are going to introduce you to the handsome Arabian Stallion made by Hagen Renaker. He is a full 8" tall and breathes great power and pride in his in-action stance. Ferseyn was produced in 1958-59 again in 1965-67 and brought once again in 1970 to run one more year. His original price tag was a mere \$5.00. It's hard to believe how he has grown in value since 1970. "Ferseyns" mate is "Sheba" and they have a young one named "Sherif". The set of three came in shades of white, grey, brown & rose grey browns, all of them very beautiful. (Left in photo and light grey)

Also say hello to a cut little fella named "Sherif". He belongs to Ferseyn and Sheba and he is 4½ in. tall. He was only made from 1956-59 so he was not made as long as his parents. Consequently he is much harder to find than they are. He is in a walking position and closely resembles another mold called Roughneck but if you will study the picture accompanying this article you will be able to see the difference (a photo of Roughneck and his family will come in a future issue).

Sherif, being made only at the Monrovia factory (article to come on HR manufacturing history), should have the solid color eye with the hand painted eyebrow but not always. Hagen Renaker was not consistent in alot of things they did. This B658 foal came in grey, white & rose grey with brown shades. Look for Sherif in your shows, you'll like him alot.

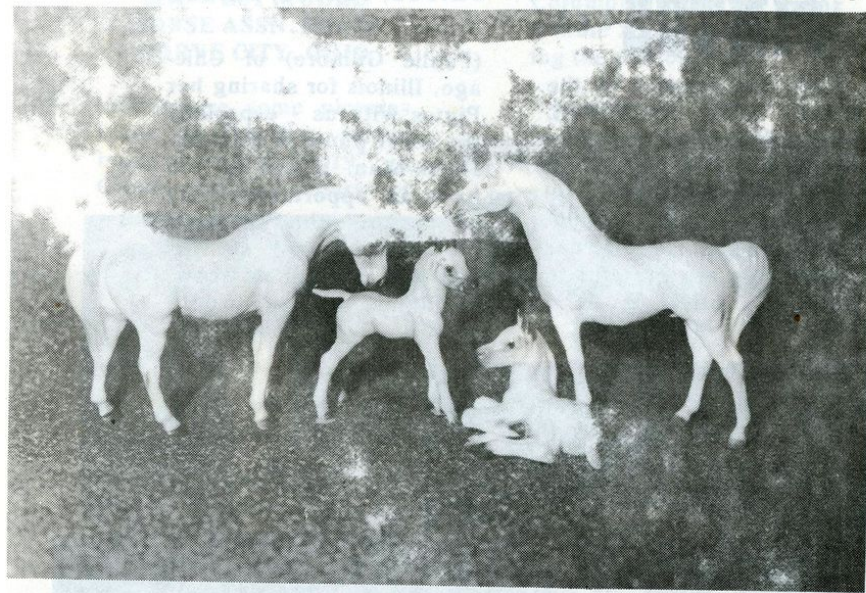
The miniature Arabian family will come to life for you this month. The set consists of a stallion, mare, standing foal and lying foal.

The 3" stallion stands proud and tall and is the most typey of the set. Miniatures as a rule do not have factory names but the stallions stock number is A047. He was produced from 1959 to 1972 in colors of grey, white and rose grey/brown.

The 2½" mare is soft and gentle looking and is a fine mate for the stallion. She was made the same years and colors as the stallion and sold as A046.

The 2" standing foal, A048 is the mold with the straight out tail. Don't confuse it with the A298 mold with the tilted up tail who's body is exactly the same. The standing foal was produced in the same years and came in the grey, white and rose grey/brown colors also. The lying foal, A049 is not

HAGEN RENAKERS



as easy to come by as they are a bit on the rarer side. Made in years 1959-61 & 1967 they came in grey, white and & rose grey/brown shades.

By the way, rose grey/brown where mentioned is a brown or greyish color with a pinkish roshading over hips and shoulders.

A nice set to own, this miniature Arabian family.

Photo shows light grey set, mare, standing foal, lying foal and stallion, l to r.

From the Editor's Desk:

As Spring is progressing & your thoughts are turning to graduation, the ending of school, or of trail riding, I hope that you won't become so busy you will forget your Model Horse 'critters'.

We still need a boost in Subscribers, so **please** pass the word.

For those of you who are PINTO showers and lovers, HELP US! In July, the Pinto Championship show will be held in Milwaukee, Wi. IMHJ has been invited to be in a booth with the Editor of Horsemen For All Ages Magazine (a live horse magazine who prints IMHJ) to be available to Pinto horse owners from US and Canada. We want the next issue to be especially for Pintos. Send a photo of your favorite Pinto(s) and short description with a SASE for return of picture(s). The pictures should be

good and clear with contrasting backgrounds if in color and sharp if in black and white (sharp means model stands out well and photo is clear focused). Photos will be here til first week in July. Come on and show real Pinto owners how closely we show model pintos also.

The first deadline for Congress will be upon us soon. So start getting those entries ready. Happy showing and we shall see you around the various model horse show arenas. . .

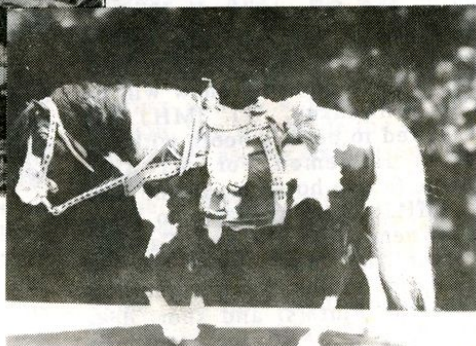
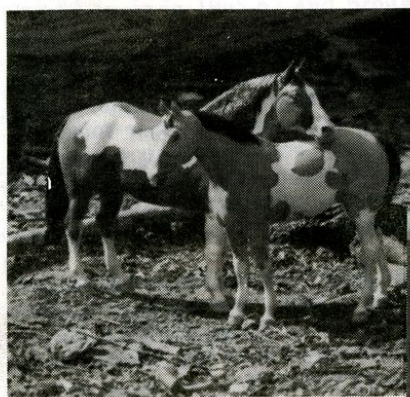
Modelly,
Marney
Marney

PINTOS...

With due respect to the **REAL, LIVE NATIONAL PINTO SHOW** which will be held July 13, 14, 15, & 16 in West Allis, Wisconsin, we thought it would enjoyable to include some of our Pintos. We are grateful to **LA GATA LUNA RANCH**

PINTOS, PINTOS, PINTOS

(Paulie Gilmore) of Chicago, Illinois for sharing her Pintos with us - especially the cover photo of **Dust-on-Hoofs-Man**. If any of you have an opportunity, why not run up to the Wisconsin Fairgrounds in West Allis and view a National show. Might be a fun thing to do!



MIDWEST MODEL HORSE ASSN. SHOW GROVE CITY, OHIO

Columbus, Ohio. We thank Bonnie Sumser for forwarding the photos to us.

Below are some pictures taken at the live model horse show May 14, 1977 in Grove City, a suburb of



View of the Exhibitors stalls



Judging the Paint Class

HOW TO ENTER A MODEL HORSE SHOW

By Patty A. Gray

The classes must appear on the photo back. You should use Pencil to write them so when the photo comes back you can erase these numbers and write on the next show class numbers. There are two ways to avoid the ink problem and that is to use pencil and to get pencil to stick on the surface of the photo back and to type the information about the horse or to use Scotch Magic Transparent tape. It must be the magic transparent for it is the only brand we know of so far you can write on. The label or strip of tape should be in the middle part of the photo back. Write the numbers of the classes in numerical order and be certain halter pictures are halter class numbers and performance pictures in performance classes. If a class such as Pleasure Type is used and it does not state halter or performance after it, enter 1 each photo in it of the horse in halter pic and performance. Whichever one it is the other photo will be disqualified but the right photo will be there for the class.

With picture back ready it is time now to get the envelope for mailing and the self addressed stamped envelope (SASE) entry fee and a sheet listing number of photos and any other items in the envelope ready to mail.

The Show fee can range anywhere from 25 cents to \$3.00/stable (no limit on the number of photos and horses you send) to 10 cents a horse per class up to 25 cents per horse per class or 25 cents per horse per show to 50 cents per horse per show (no limit on classes the horse can enter). The per horse per class or per horse per show is economical only to the person who has maybe 1 or 2 horses to send and their entry cost would not exceed the stable fee. The showholder usually chooses the type of entry fee they want depending on the awards to be given so sometimes if just a fund raiser or point show which could be free or low 25 cents/stable only a stable entry fee will be listed. If a large show with all commercial ribbons you may find all three examples of entry fee available to entrant. Keep in mind if the entry fee in coin to TAPE the coins to a card such as a 3" x 5" card or sheet of paper. If the fee is rounded to dollar bills be sure to place bill(s) in an extra envelope and write ENTRY FEE on the outside of the envelope. Most show holders having experience in entering shows will round off to a dollar bill or bills, for it is lighter to send than several coins which could raise the amount of postage to get the envelope to the show holder.

CLUB REVIEW:

The American Model Connemara Pony Society (AMCPS) - Dues are 50 cents per year, registration fees vary. Emphasis on showing Connemaras as hunters, but welcomes all phases of showing as well. Goal - to increase the knowledge of the Connemara and promote it's showing and breeding in the Model Horse World. Brand new club, many activities in planning. Rules 15 cents (half xeroxing cost) and SASE. Patty Gray, Lough Corrib Connemaras, 5416 Forest Acres Dr., Nashville, TN 37220.

PLEASE Let us hear from YOU!!!
All you have to do is send us all information plus a photo of yourself or your model with you to IMHJ, 626 East Church St., Libertyville, IL 60048. Hope we'll be hearing from you.

MODEL HORSE CONGRESS '77 information is ready now - please send SASE for full details to MODEL HORSE CONGRESS '77, Marney J. Walerius, 252 Drudry Ln. NB, Barrington, IL 60010. DO IT NOW - YOU DON'T KNOW WHAT FUN YOU'RE MISSING!!!



Sally Wells formerly of the "Quarter moon Ranch" Eden, NY is now PVT Sara M Wells - US Army. Model showers came to know Sally thru IMHA & CCBA clubs showing such fine horses as Pete Bailey, Splash Bar Maid, Tejas Speckled Dove, Hi Brat, Wayward Amy, La Bueno, Bandera & others. Sally showed models for nearly 5 years before joining Uncle Sam last November. Her sister Kathy joined her in the show ring in 1975 & together they attended the last two mid-west model horse Congresses in Chicago.

Sally graduated from Basic Training in January at Fort Jackson, South Carolina & is now stationed in Germany. She still corresponds with many of her model friends and can be reached at the following address:

PVT Sara M Wells
093-44-1213

US ARPO Kaiserslautern
APO, New York, NY 09227

... and you can bet that she's "checking out" the German horses - both real & models! Best of luck, Sally in your new career - we'll miss you!

How To Enter a Model Horse Show

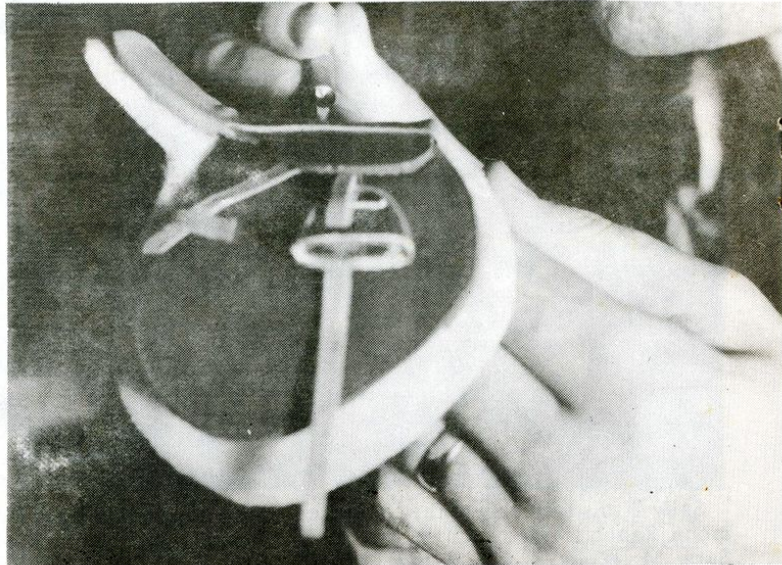
INSURANCE: Most people insure models, but not pictures, through the mails. Ceramic models should definitely be insured, as should anything worth more than five dollars or anything being shipped from more than 500 miles away. Insurance from the post office is for loss or breakage, and the cost varies with the value of the article being mailed.

PACKING AND MAILING: The post office is pretty rough on our poor models and to help them survive their journeys you'd better pack them carefully. If you have to pack a plastic model, he should first be placed in a plastic bag to keep him from getting dirty. You'll need a box bigger than the model, say with 1/2" clear space all around the model when you lay him in

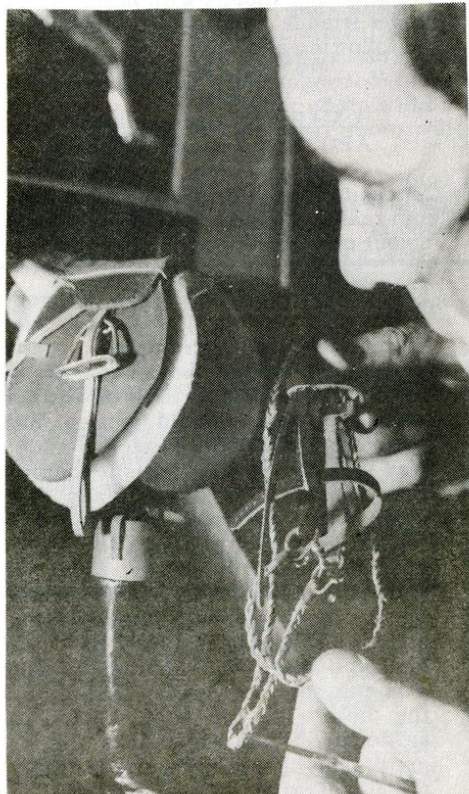
the center of the box. Place the model in the bag on top of this. Then start laying more tightly crumpled pieces of newspaper around the model, first in the four corners and then all the way around. These should put a little pressure against the model in such a way that the model is "suspended" in the center of the box. Finally place some loose crumpled newspaper on top of the model and seal the box. If possible the box should be sealed with starpping tape (also known as filament tape). This will hold together long after the original cardboard has crumbled into dust. Once around the short axis and once around the long axis of the box with the tape should be sufficient. When you shake the box gently you should not be able to hear the model rattle, if he's pack right.

David Page

MEET DAVID PAGE

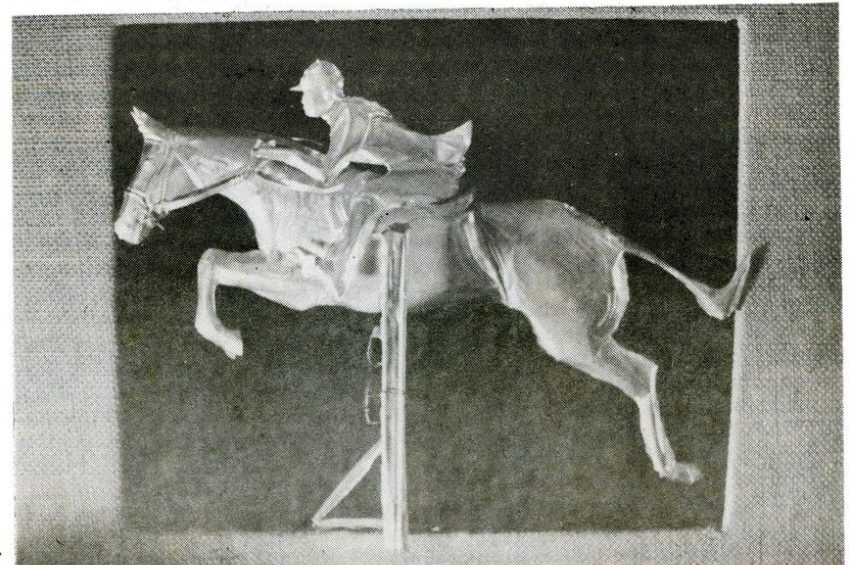


ED. NOTE - David will be at Congress '77 . . . hope you will too . . . If you write, encourage him as he may start Hunt/Jump sets for Breyers - drop him a line . . .



I have spent many happy hours around horses during my childhood in Ireland, service with the Brigade of Guards in England and since coming to the U.S.A. seven years ago. All my family which includes my wife, 14 year old daughter and 11 year old son, ride both English and Western. We own a hunter/jumper thoroughbred.

In my opinion, the most beautiful animal is the horse and being a creative person, I saw the potential in an art form. I work with aluminum foil and have sculptured horses in that medium. I also like working with leather and having seen many model horses, I began to think about making tack for them. It is not easy to do a saddle and bridle in miniature. It takes a great deal of time but the results are well worth it as you can see.





HOW TO GET THE MOST FOR YOUR POSTAL DOLLAR

By Sandy Tomezik, Perth Amboy, NJ

Postage is always increasing and rumors abound that it will soon increase again. Model showers feel this crunch more than most and not a few showers have had to quit, due at least in part, to rising postal costs. Well, you can't decrease the postal rates yourself, but you can use them to your best advantage and get the most service for the least money.

The first and best way to cut down on postal costs is to use postal cards whenever possible. Instead of enclosing a SASE (Self Addressed Stamped Envelope) enclose a postcard for people to reply to you. This won't work of course, if they have to send you pictures or stud lists or anything of that nature, but to find out if a model has been sold or other short reply, the postcard is ideal. It is also four cents cheaper than a letter.

The biggest postal expense for us showers is, of course, mailing our pictures to shows. Pictures may be sent 1st, 3rd, or 4th class, by Priority mail or Special Delivery - a brief explanation and the costs of each follows.:

FIRST CLASS - This is the quickest way to send pictures in the U.S. All long distance first class mail is now sent by airmail so there is no advantage to paying air mail rates for domestic mail. First class is USUALLY delivered anywhere in the continental US on the third day after mailing, if mailed before noon. If possible allow at least four days for delivery. It costs 13 cents for the first ounce and 11 cents each ounce or part ounce thereafter.

AIRMAIL: As I said there is no advantage in paying airmail rates in the U.S. However to enter Canadian shows, it is quicker to send things airmail. Price is 31 cents per ounce.

SECOND CLASS - Second class is only for printed material. You cannot send pictures second class - too bad.

THIRD CLASS - Third class is parcel post for packages weighing under two pounds. This is the class that most

pictures will be sent (at least if you can't afford first class). The time it takes will vary greatly with the season and how big your package is. Smaller packages move faster in general. Cost is 14 cents for the first 2-4 ounces, 11 cents per ounce thereafter up to 2 pounds. Cost will vary according to the postal zone it is being sent to. Have your packages weighed at the post office to make sure you have the correct postage on them.

FOURTH CLASS: Fourth class is parcel post for packages over 2 pounds - it costs the same as third class and moves only a little slower. This is the best class to send models, trophies and such like stuff.

PRIORITY MAIL: This is first class for heavy mail. It moves a little slower than first class, but not much. It is excellent for pictures, because it has the benefits of first class without quite all the expense. Pieces for priority mail must weigh over 13 ounces. The cost varies with the postal zone it is being sent to.

SPECIAL DELIVERY: Contrary to popular belief this class of mail does not move any faster than first class - but it is supposed to be delivered as soon as it reaches the post office, anytime of the day or night, weekends, holidays, etc. Recent investigations have shown that it is often not delivered when it arrives, but it is saved for the next day. Cost is first class rates, plus \$1.25. Mostly this class is not very useful for the slower.

LIBRARY RATE (Book Rate): This rate is great for people who are sending old magazines, books, records, films and other library materials (although you do NOT have to be a library to use this rate). This is the cheapest class around and although service is spotty (it can take anywhere from one week to six to travel across country) it is worth it. Weight limit on packages is 70 pounds, and ONLY books, etc. may be sent - they have the right to check, too. Cost is 25 cents for the first pound and roughly 10 cents for each additional pound.

Mailing glass models (especially HR's) is much the same, except that they should be placed in a small box, wrapped well, and then the small box placed in a larger box, as described above. You may want to wrap the model itself in foam rubber or some other padding before placing it in the small box.

Address the box clearly, block printing if possible in large dark letters. ALWAYS include your return address. It helps if you put a small piece of paper inside the box with the name and address of who the package is to and your return address, just in case something should happen to the boxes exterior. Unwieldy packages should be tied with strong string to make them easier to carry.

For mailing pictures I recommend heavy manilla envelopes which come in a variety of sizes. Regular white envelopes are alright for only

about 10 or fewer pictures for the small size and maybe 20 for the business size. If you have a lot of pictures, try putting them in a plastic bag, or putting a rubber band around them before mailing, to help keep them from leaking out of your envelope if it should rip. DEFINITELY have your name and address on the back of EACH picture, in case they get lost the post office will often return them to you. (I got some back that were stamped like postcards) Stamping tape can be wrapped around particularly heavy manilla envelopes, but scotch tape (not easily broken magic tape) will often do as well, is much cheaper, and is transparent.

Postage will always be with us, and it will probably continue to be expensive but if you're careful in how you use the post office, you'll get better service and save money which can be better spent on new models.

Oak Brook Farm

"Fine Quality Quarter Horses & Appaloosas"

Showers, Breeders, remakers & above all, collectors of some of the nations finest stock horses. We have been model showing for 6 years and specialize in ONLY Quarter Horses & Appaloosas. Contact us today for your stock winner of tomorrow.



DOC DAKOTA
4 YR. OLD
Sorrel Stallion

AMQHA Champion

Oak Brook Farm
Bonnie Sumser, Owner
331 Fulton St.
Sandusky, OH 44870
219/627-9710

Didja Hear? Who? What? Where?

Bettye Brown, one of the first subscribers of IMHJ, has joined the Bear Springs Equestrian Center as manager. She is working with young riders as well as enjoying visits with a few Hollywood personalities who board in the center as well as come by, Buck Owens and Chuck Connors to name a few. She has been enjoying the work and correspondence she has been gaining through IMHJ.

Beth Peart of Canada, who appeared in our last issue's New Faces section, writes that she is making tack for sale. Send her a stamp and she will send you prices and further details - Beth Peart, 53 Maple Av., Welland, ONT, Canada L3C 5E9

- The 6th Model Horse Congress (LIVE MODEL HORSE SHOW) will be needing sponsors this year. If you cannot come join us in person how about in spirit. Each sponsor will receive a free 1/4 page ad in the show's program. Sponsorships are: \$2.50 per class (Rosettes to 1st and 2nd, 3x12" ribbons to 10th) Each Championship or Res. Championship Rosette \$4.00,

which are 15" long rosettes or 6 Silver trophy trays for Grand and Res. Grand in both Repaint/Remake and Original Finish divisions and High Point and Res. High Point of show, \$12.00 each. Come join us one way or the other!!

Change of Address - for Doris New and HHROC club: they have relocated in Arkansas, write her at: Rt. 2 Box 99B, El Dorado, ARK 71730.

Sally Wells from Eden, NY has joined the Army and has been stationed in Germany. Oh, Oh watch for future Goebel and Beswicks flowing out of her barn in the show string. A write up sent to us by Kathy Wells, her sister is elsewhere She'd love hearing from you to help pass time. APO postage overseas is the same as US postal rates. A letter will reach her for 13 cents first ounce, 11 cents each additional.

Sandy Tomezik of Columbia, MO (while in School and N.J. when home) enjoys her Hartland collection so much and continually wants more so she now has begun, signing things Sandy Hartland, Sandy Hartland . . . think on it!!

DEAR EDITOR:

Dear Editor:

I would like to know that model horse stud fees are used for and what their purpose is, Thank you,
Lori B.

Dear Lori:

When a stud fee is used, it is used to pay for the cost of sending the certificate of breeding to you as well as the cost of having the certificates made up on the cards. In cases where the model has been a successful show horse and won his championship you are also paying for the championship sire's name just as in real horse breeding. Hope that clears up the question in your mind.

ED.

Dear Editor:

I subscribed to the IMHJ back in Dec. 1976. To date I have only gotten the Dec., Jan., March and April issues. Where are the Jan. and May?

Impatient

ED.

WHERE TO PURCHASE MODEL HORSES TODAY

Bentley Sales Company
3064 Plum Island Drive
Northbrook, Illinois 60062
Phone (312) 272-1393

Ben Franklin 5 & 10
Maine Street
Barrington, Il. 60010

Farm Supply (F & S)
at Lake Zurich, Il. and Grayslake, IL.
plus more locations!

Service Merchandise
Exit 747 off I275
Across from Tri Country Shpg. Ctr.
Springfield, OH
Phone: 513-671-6990

Barrington Music Store
Cook Street
Barrington, Ill.
* Select number of German Goebel Horses in china.

Circus World
Lakehurst Shopping Center
Waukegan, Il.

Mini-Mart
Hwy. 22
Lake Zurich, I

Skrudlands Imports
Hwy H
Lake Geneva, Wis.



BENTLEY SALES COMPANY
animal masterpieces

3064 PLUM ISLAND DRIVE
NORTHBROOK, ILLINOIS 60062

PHONE (312) 272-1393

Write for free catalog & order sheet.

We handle Breyer models exclusively.
We carry all items in stock and ship your orders promptly.

You will like our prices and service.
Write for free catalog & order sheet.

We guarantee all models will be received in good condition
or we will make a free replacement.



• ROCKING MJW RANCH •

Rocking MJW Ranch, Marney J.
Walerius - Owner, 252 Drury Ln. -
NB. Barrington, IL. 60010.

ROCKING MJW RANCH SALES

1. Breyer Mustang Family \$6.00 PP
2. Breyer Polo Pony \$5.00 PP
3. Breyer POA Pony \$5.00 PP
4. Breyer OLD MOLD BAY FOAL (1958 - 1960 made) \$10.00 PP
5. VERY OLD (1958 - 1960) Bay Family Stallion white eye corners \$17.00pp.
- *7. Glossy Appaloosa Family \$25.00/Family (grey rump w/spots)
- *8. Glossy Bay Family \$25.00/Family
- *9. Glossy Palomino Cream Family \$25.00/Family
- *10. Glossy Alabaster Family \$20.00/Family
- *11. Glossy Charloal Family \$25.00/Family
(* the family can be split - \$15.00/adult PP, \$8.00/foal PP)
12. Glossy Dapple Grey running foal \$10.00 PP
13. Glossy Charcoal Running Stallion \$18.00 PP
15. Glossy OLD Pinto prancing Western Cheyenne 1 rep. leg \$12.00 PP
17. Buckskin (matt) Indian Pony \$12.00 PP
18. Breyer Lippizan \$5.00 PP
19. Bay Grazing Mare & Foal \$15.00/both or \$9.00/m - \$7.00/f PP
20. Matt Palomino Family Stallion \$6.00 PP
21. Matt Palomino Family Foal \$4.00 PP
22. Glossy Alabaster Shetland \$10.00 PP
23. Appaloosa Wes. Prancing Cheyenne \$6.00 PP
24. Glossy Palomino Fighting Stallion - 1 rubbedmark \$7.00 PP
25. Smoke Grey Western Prancer \$8.00 PP



ALL Horses are Breyer. All in Exc/Good condition unless otherwise stated. Missing numbers are sold. Cash or money orders only or otherwise there will be a 4 week wait for checks to clear banks.

Write: Rocking MJW Ranch Sales, Marney Walerius, 252 Drury Lane, NB,
Barrington, IL 60010

CLUB DIRECTORY

CLUB DIRECTORY - Please enclose a stamp for reply.

NO STAMP - NO REPLY!

Model Horse World
Miss Jill E. Sackman
326 Shagbark Drive
Rochester, Mich. 48062

Model Horse Club
Misses Carla Howard & Gayle Nielsen
W 2805 Dell Dr
Spokane, WA. 99208

I.M.P.R.A. (International Model Pony Registry ? Association)
Miss Mary Rudersdorf
Rt. 10, Beacon Hills
Richmond, Ky. 40475

Model Horse Shows Journal
Miss Linda Walter
316 S. Brundidge St.,
Troy, Alabama 36081

M.A.H.R.
Model Appaloosa Horse Registry
Janet Wells
3511 Elaine
Park City, IL 60085

IMApHA
(International Model Horse Assoc.)
Sue Hutzel
588 Stephens Rd., R.R. #1,
Maineville, OH 45039

HOACC - Horses of Another Color Club
Sandy Crosse
Box 294
Treyvor, IA

The BLOOD HORSE SEMINAR NEWSLETTER
Bi-Monthly Magazine for Model TB's
Alma Souza
43 Brooks St.
Maynard, MA 01754

THE INTERNATIONAL MODEL HORSE CLUB & CANADIAN MODEL HORSE CLUB
Elke Hausler
3772 Dollarton Hwy.
North Vancouver, B.C.,
Canada V7G 1A2

INTERNATIONAL MODEL ARABIAN REGISTRY
Mrs. Bette Hatcher
11942 E. Florence Ave.
Santa Fe Springs, CA 90670

HHROC - Hartland/Hagen Renaker Club ONLY
Doris New
103 E Semands,
Conroe, TX 77301

AMCPS - American Model Connemara Pony Society
Patty Gray
5416 Forest Acres Dr.
Nashville, TN 37220
(will be reviewed in May issue)

DID YOU
Subscribe
YET??????

**ATTENTION
MODEL HOBIESTS**

DO YOU HAVE PHOTOS AND WANT TO ADVERTISE? OUR REASONABLE RATES FIT ANY AND ALL BUDGETS WHY NOT CONTACT US FOR OUR AD RATES? LET'S HEAR FROM YOU!



SIKORSKY STABLES

MELISSA J. CARLIN
50R CLINTON ST.
STRATFORD CT. 06497

REPAINT RATES '77

Full Size Breyer, Hartland & Circle H \$5.00

Classic Size Breyer, 6'' or 7'' Hart, Circle H, H-R's & Breyer
Foals \$3.00

Classic Breyer Foals, Stablemates, Harts, Tinymites, H-R
Foals \$2.00

Add \$2.00 for remaking/repositioning any model.

Pictures are 50 cents each. Halter **only** unless you supply the
tack.

Horses will be returned in the same box that they come in.
You must pay postage both ways. Send the same amount for
return postage as you paid to send the horse. Horses sent
without return postage will **not** be mailed back unless
postage is received. Sikorsky Stables will not be responsible
for breakage caused by insufficient packaging!

Prices for dappled gray horses are double the price listed for
that size model.

If you wish us to buy & then repaint a particular model
(instead of sending one of your own) the price will be the
retail price of that model and \$1.00, postage and the repaint
price listed for that size model.

Thank you for asking about Sikorsky Stables custom repaints,
I hope that you will use our service.

Sincerely,

MELISSA CARLIN



HERE ARE TWO EXAMPLES OF SIKORSKY STABLES FINE REPAINT WORK. AN EXAMPLE OF OUR REMAKE WORK APPEARED IN THIS SPACE LAST MONTH. IF YOU ARE INTERESTED - WRITE TO THE ADDRESS GIVEN ON THE PREVIOUS PAGE.

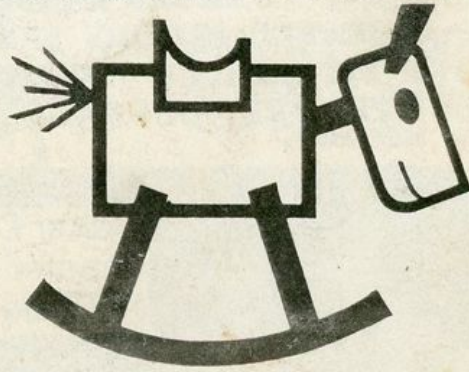
Halter Champion Gil-galad
dappled grey Arab Stallion
For Sale, asking \$30.



Halter Champion Kibil Nala
chestnut Appaloosa mare,
For Sale, Asking \$35.



FIRST CLASS



**ATTENTION
ALL MODEL HORSE
ENTHUSIASTS!!!**

SAVE

August 4, 5, & 6

**Watch next month's issue for the
1977 Model Horse Congress Program
and the 3 day schedule of interesting
and exciting events - ALL OPEN TO
YOU!**

**ATTENTION
ALL MODEL HORSE
ENTHUSIASTS!!!**