

The INTERNATIONAL MODEL HORSE JOURNAL



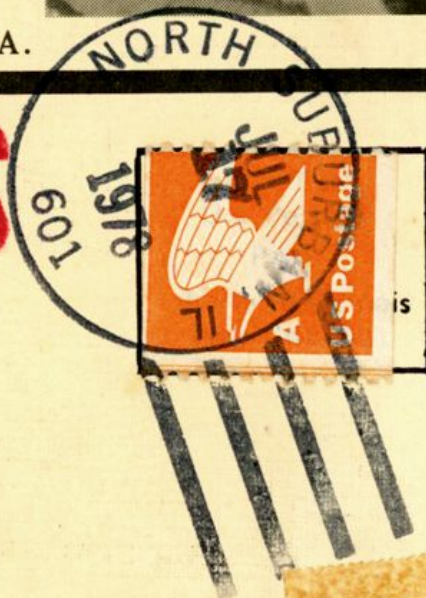
Grand Champion Overall
*SAKR

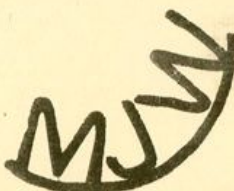
Owned by Liz Bouras, Narberth, PA.

\$1.00

FIRST CLASS

Meg Walker
Rt 4 Avondale Box 118
Seneca, SC 29678





ROCKING MJW RANCH

is thinning out the herd for winter - they need good homes and are "choice" models.

FOR SALE

BREYERS:

1. Glossy OLD Appaloosa Family - \$25.00
2. Glossy OLD Bay Family - \$25.00
3. Glossy OLD Palomino Stallion - \$15.00
4. Glossy OLD Palomino Foal - \$10.00
5. Glossy OLD Alabaster Foal - \$8.00
6. Glossy OLD Appaloosa Foal - (2 scratches) \$6.00
7. Glossy Dapple Grey Running Foal \$10.00
8. Bay Canterng Welsh - \$12.00
9. White 'Old Timer' with hat - \$7.00
10. Bay Grazing Mare - \$8.00
11. Bay Grazing Foal - \$5.00 (or \$10 for both #10 & 11)
12. OLD GLOSSY Family Stallion in Bay, white eye corners, no emblem. Mgf. sometime in between 1957-60. Excellent condition - \$20.00

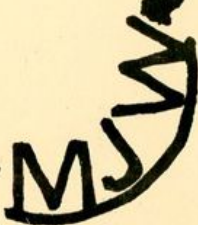
HAGEN RENAKER:

13. San Dimas 1970 Brown Morgan Stallion - \$20.00
14. San Dimas 1974 Brown Morgan Stallion - \$15.00

All postage paid and insured. All discontinued from production. You buy more than one model and you get a discount!! Write today and **give a model a good new home!!**

• ROCKING MJW RANCH •

Rocking MJW Ranch, Marney J.
Walerius - Owner, 252 Drury Ln.
NB, Barrington, IL. 60010.





In This Issue

LIVE SHOW SURVIVAL TACTICS CONCLUSION

By Sandy Tomezik

PROPER TACK FOR MODEL HORSE SHOWING By Laura Hornick

CONGRESS 1977

Contributing Editors in this issue: **Sandy Tomezik, Laura Hornick, Nancy Mongan, Dana Brackett, Liz Isham & Carol Howard.**

plus regular features - Know Your Hagen Renakers, Didja Hear, New Faces, Calendar of Events and Club Directory.

EDITOR - Marney J. Walerius

PUBLISHER - Horseman for All Ages

Rates per Issue:

Club Directory: \$1.00 per year

Buyers Guide - \$2.00 per year

Classified Ads - 5 cents a word - 100 word limit.

Model Showers Ads - Without pictures
¼ page \$3.00 (limited words) or ½ page \$5.00 (limited words). Full page \$7.00 with limited words.

Model Showers Ads with pictures - ¼ page wording limited \$3.00 (1 picture); ½ page wording limited \$5.00 (1

picture); and Full page wording limited (2 pictures) \$10.00.

Sales Lists - \$100.00 per year.

Commercial advertising rates upon request - write IMHJ, 626 E. Church St., Libertyville, IL 60048, or call 312/362-5555 Days.

Subscription: \$5.00/8 issues a subscription. Sample copies or Extra Copies \$1.00 each. Single cost per issue is \$1.00

The International Model HORse Journal is published by the Horsemen for All Ages, 626 East Church Street, Libertyville, Illinois 60048. Subscription rates are \$5.00/year and \$1.00 per single issue. Unsolicited manuscripts and photographs are welcome and all will be considered. They must be accompanied by sufficient return postage, and we assume no responsibility for loss or damage thereto. Copyrighted 1976. Written permission must be obtained to reproduce **ANYTHING** printed herein. Advertising rates upon request. Call (312)362 - 5555 (days).

LIVE SHOW SURVIVAL TACTICS

By Sandy Tomezk, Perth Amboy, NJ.

NOTES TO THE SHOWERS: To sum up live show survival in just a few sentences is hard. Every year I find more and this year will be no exception, but the basic rules are: don't take more models than you can easily take care of, be a good sport - most are anyway, don't harass the judge (i.e. comment on judging where the judge can hear you) you won't like everything they do of course, but the judge is doing the best she can - judging is a matter of opinion and you paid for her opinion, don't harass other showers when they have work to do, tack may be borrowed but you don't have a right to someone else's tack even if they are not using it, and be competitive but don't be out for blood, relax, enjoy the show and your fellow showers.

NOTES TO THE SHOWHOLDERS AND JUDGES: This is how things look from the showers point - of - view and how we (I) think things could be improved: original finish Breyers are a problem. Some showers have nothing but and no one likes to go home (or see someone go home) without having won anything, on the other hand there are so many good repaints, discontinued original finishes, etc. that the original finish Breyer is hard to place. If you can a good solution is to have separate classes for original finish models - at least in the big classes like Arabs, Apps, and the stallions, mares, geldings and foals. It still leaves the Breyers up against original HR's and such, but it is much fairer. Realism is a tough question (and I believe I will devote a whole article to it in the future). There are some very lovely models that are not realistic (most Hartlands and some repaints for example). They often don't do well at live shows. It's hard to say how much realism model showing should have, and it comes down to a matter of opinion. Timing classes is important and straight forward, showers could use a break between halter and performance and a break between performance classes. When judging original finish models of the same

mold and color the condition is an important and sometimes overlooked factor. If choosing between models of the same mold and color I think the one in the best condition should get the nod. However this won't work between models of different molds (and to a lesser extent between models of the same mold but different color) - for example, the HR DW saddlebred is still a better model than the Breyer saddler, even if the former be much broken and the latter perfect. Finally there is the question of the model vs. the horse (related to realism). A good model (e.g. an old rare Hagen - Renaker) may not be as good a horse as an original finish current Breyer. This makes another tough question for the judge to answer - do you judge the model or the horse or both? Each judge can settle this as they will but they must judge consistently, if you start out choosing the better HORSE you should not switch to choosing the better model.

Well, that's what's gotten me through the last few years, I hope it helps all of you and I hope to see you at the shows.



HUNTSMAN AND MOUNT OWNED BY BETH PEART PICTURED HERE AS SEEN AT THE 1977 MODEL HORSE CONGRESS.

PROPER TACK FOR MODEL HORSE SHOWING

By: Laura Hornick

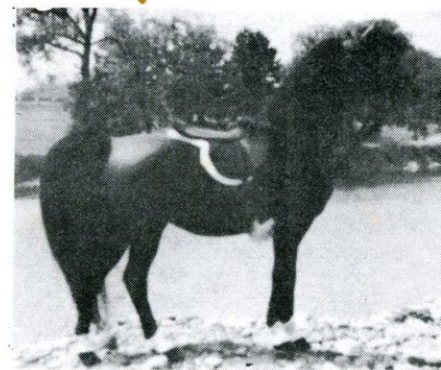
At a live show held in Grove City, Ohio on May 14, 1977, I was surprised at the tack in the performance classes. Not only was much of it improper, some were so poorly made I could not place it being the judge of the show. I believe that the tack used on the horse reflects the owners confidence in the Model (sometimes a new starter in showing needs to practice alot before tack comes up to par - ED) and him or herself.

As a maker of tack, I would like to suggest and clarify types of tack that are proper. Let's begin with the easiest, the Western Saddle and classes:

The saddle should consist of a basic stock saddle which can be plain or fancy (buckstitched/silver trimmed), a saddle pad and bridle. The bridle can be a hackamore type (due to models horses mouths being closed) or a curb type indicating a "false bit" (Hackamore/Bosal type bridles should be used on horses under 4 years of age, bits on horses over - ED.) and at the option of a shower the breastplate. Tie downs can appear in action timed classes but not the pleasure or working type classes.

In Hunt seat a saddle should be forward seat with knee rolls and a saddle pad. The bridle should have a snaffle bit although a pelham (Snaffle is single rein, Pelham double reined). A breast plate is allowed in American Huntseat classes but not in Canadian and is an optional piece of tack to keep the saddle from slipping. A martingale (tie down in western terms) is not allowed in pleasure &/or classes on the flat (no jumping). However it is often used in jumping &/or hunter over fences classes.

Saddleseat is a saddle of FLAT conformation (no knee rolls) cutback in appearance at the pommel. A saddlepad is optional and not usually used unless the model (Horse in real life often have high withers that can be rubbed easily by the saddle) has prominent withers that could rub. The bridle is double bit and reined. A long shank curb and smaller snaffle bit



combine to make the bridle double bit.

To clarify a problem I have seen come up time and time again in shows, the tack and classes proper to show a Tennessee Walker in. The Breyer Tennessee Walker is in the running walk position therefore, he cannot be shown in Western Pleasure, English Pleasure, Park or Hunter/Jumper classes. (If English Pleasure class is Open and a single T.W. reined bridle with cutback or saddleseat saddle is used the T.W. should be considered int the class - ED). These classes call for a walk, trot & canter, no running walk. So think twice and be realistic.



Halters are another problem. An english type horse such as Thoroughbred, that is not shown in western classes is not shown in a halter. It is shown in a snaffle bit and bridle. A western type horse such as a Quarter Horse, Appaloosa or Paint should be

Continued on the next page -



PROPER SADDLESEAT TACK

shown in a realistic clean halter or buckstitched looking or silver trimmed (buckstitching can be painted on and silver trim can be created with silver small spot studs or aluminum foil but and glued to small leather strips. - ED). Arabians should appear in a headstall type halter of rolled leather appearance and silver trimmed. Saddlebred, Morgan Parktypes, and other english gaited horses should show in halter classes with their english performance headstall (Bridles).

I hope this will help many new showers and older ones too who may not have been around real horses enough to know the differences. Remember, model showing is to be as realistic as possible.

I welcome inquiries/responses to this article . . . please write.

Laura Hornick
Baker Hall - Room 2176,
129 W. 12th Av.
Ohio State University
Columbus, OH 43210

(New showers - if you can keep an eye out for a live show in your area and go visit even if you can't enter, you will learn much more about tack. But the one thing that is more important is that there is NO PATTERN to making tack. When you make tack it is experience and practice that will make it improve the most - ED.)

KNOW YOUR HAGEN RENAKERS

By Nancy Mongan

Through the years that Hagen Renaker was in production, 1949 til now, they made only three horse models that had riders on them. Those three were a Thoroughbred & Jockey, and Arabian and Bedouin and a Quarter Horse and Cowboy. These three horse and rider models were their "Cadillacs", the very best in all that they did in the horse line. They are big models and were of exquisite and minute detail. Of course it would stand to reason that they all are very rare and hard to find these days.

Perhaps if it could be said that one model is easier to find than the others it would be the 8" cowboy astride his cutting horse. This mold was manufactured from 1958-1966 which is a good many years for one mold to be produced. In reality there should be alot of this particular mold to be known but there really aren't and finding one would just be a stroke of good luck. "Cutter" was made in black, chestnut, buckskin and bay but the most common color of all is chestnut with variation in mane and tail colors. His stock number was B689 and Hagen Renaker made a very nice action steer to go with the cutting horse.

The B642 Arabian and rider is a very impressive and stylish model and one could just about imagine a desert encampment ahead for this Bedouin and his horse. The rider is carrying a rifle that is seperate from the mold and is a very easily broken part which explains why some of these molds are found minus the rifle. The "Bedouin" was produced in 1956 through 1958 and is 9½" tall-found mostly in shades of light and rose greys.



NANCY MONGAN

Additional pictures on the next page.

The Thoroughbred with its jockey is the rarest of the Hagen Renaker horse and riders and virtually none are to be found. It is thought that maybe 50 or less were made in the one year, 1962, that it was produced. The model is in beautiful running action on a base. The #7 on the blanket and the B760 model coming in variety of grey, brown & Bays with jockey silk colors varying also. The height of this model as well as the factory name are unknown but hopefully one day we will find out. (The one I saw in a collection is 6½" tall, 8 inches long - ED.)

GROOMING THE MODEL HORSE

By Sandy Tomezik (Perth Amboy, NJ)
Part 1 of 2 parts.

For most model showers "grooming" consists of a quick occasional dusting, and by the time you have as many models as I have the dusting gets to be very occasional. But good grooming is important to any show horse, whether in photographs or more importantly in live shows, and a few simple techniques can make any horse look better.

There are even a few things you can do for original finish models to improve them. First you can dust them with a soft cloth-preferably one with a bit of a nap like velour or flannel. Hard to reach spots can be cleaned with a soft camel's hair brush, like the kind used for cleaning cameras or for watercolor painting. These brushes are soft enough not to scratch the most delicate finish. It is important to clean behind the ears and around the face whether for live show or photo session - dirt will dull the appearance of the finish and grey the color of the model.

Buffing lightly with another (clean) soft cloth will bring out some of the highlights and finer points of color, especially in Hartlands.

This will help any horse, but what about that special problem, the repaint/remake? More care must be used in cleaning these, and care must be taken to avoid solvents (liquids which dissolve things) which could ruin fine paint jobs or loosen the glue on hair.

Most horses will never need a solvent of any kind applied to them, so this is little problem, but if your model picks up a paint stain or any other stain, you



MARLENE KOSANKE of Wis. and NANCY MONGAN of Illinois.

can use a variety of substances to remove it. First of all try water - this can be used on any model, except those which have been glued with Elmer's glue or other similar white water soluble glue. If water doesn't work try alcohol (regular isopropyl, rubbing alcohol is fine) Alcohol will remove dried acrylic paint. It will also take the finish right off Hartlands -- so don't use it on them. Alcohol can be used safely on original finish Breyers and all original finish ceramic models. Naturally it cannot be used on acrylic repaints (but you can use water on those.) Another use for alcohol is removing glue and glue stains, such as those left behind when a Hagen-Renaker or Beswick sticker is removed. These stickers are often placed in un--photogenic places by the factories, but the glue on them can be loosened with alcohol, the sticker removed intact and transferred to a less conspicuous place. This way you retain the original state of the model, but don't have the unsightly stickers showing in pictures.

Oil paint, or other oil base stains can be removed with turpentine, or turpentine like paint removers. This is safe to use on all glass or ceramic models and Breyers (but don't leave them to soak.) All paint and stain removers should be applied with a small rag or piece of cotten - don't leave models to soak as this may cause changes in the plastic resulting in loss of finish or softening . . . If you apply the solvent a little at a time it is safe.

Finally as a last resort on very stubborn stains you can try acetone (nail polish remover). It will remove anything, just about - including the finish of a Breyer or Hartland, but you can use it on original finish glass models.

CLUB DIRECTORY

CLUB DIRECTORY - Please enclose a stamp for reply.

NO STAMP - NO REPLY!

IMApHFA

(International Model Horse Assoc.)
Sue Hutzell
588 Stephens Rd., R.R. # 1,
Maineville, OH 45039

BABSR

Breyer All-Breeds Stablemate Registry
Dawn Dreher
6402 Ridge Rd.
Clarendon Hills, IL 60514

IMApHC

International Model Appaloosa Horse Club
Nancy Kehoe
308 Douglas
Eveleth, MN 55734

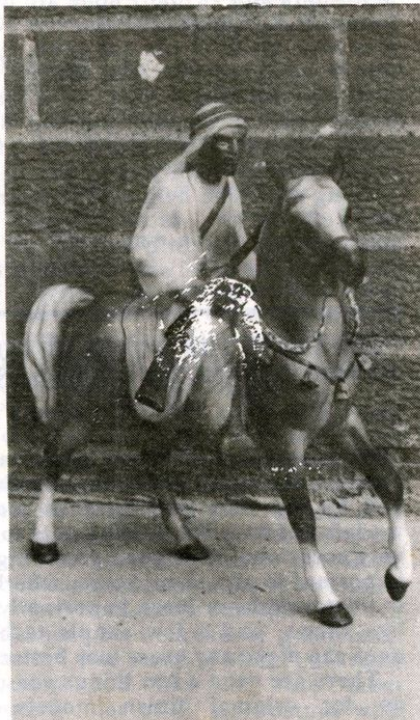
AMCPS - American Model Connemara Pony Society

Patty Gray
5416 Forest Acres Dr.
Nashville, TN 37220
(will be reviewed in May issue)

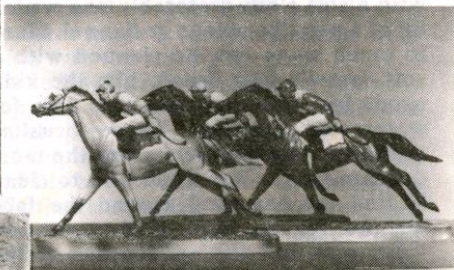
The BLOOD HORSE SEMINAR NEWSLETTER

Bi-Monthly Magazine for Model TB's
Alma Souza
43 Brooks St.
Maynard, MA 01754

HAGEN RENAKERS



Picture belongs to Marney Walerius



Hagen Renakers Thoroughbreds and Jockeys
Picture belongs to Nancy Mongan



Picture belongs to Marney Walerius

DID YOU
Subscribe
YET???????

DEAR READERS

My many thank yous are sent your way for entering the 6th Annual Model Horse Congress and making it a success. Especially when you rallied for the difference we needed. I only hold Congress, you make Congress happen. Thank You!!!

There are a few troubles as you all know. I can explain two of them. The water was in trouble due to the village of Mt. Prospect digging a new sewer system. To do so they were blasting away dirtways for pipes and turned off the village water to guard against flooding if a pipeline broke in the act of blasting. On the News Monday night they reported on the various residents of Mt. Prospect whos walls were cracking and foundations to their homes cracking. The other dealt with your rooms. If you stated that your parents and you were to be in the same room and are 14 and under you were NOT charged for the kids unless they did and can misunderstand your needs. If you are 14-18 years of age your room charge was under the family plan for \$2.00 per child. For either plan Under 14 or 14 and OVER you HAD TO BE IN THE SAME ROOM as your parents. There was suppose to be a special rate for the Congress rooms. Therefore, your names and addresses have been given to the Inn and they will review each room(s) charges for you and possible REFUNDS will be sent. Mind you POSSIBLE. There were several cases of lack of communication between Mr. Goldman, the Inn and I. All I can say is they are very shorthanded for Mr. Goldman who is by rights the Inn Keeper had to serve as Bartender on Friday night. Please bear with me and I will try and get things straightened out and after speaking to Mr. Goldman yesterday he will TRY and get it straight on the Inn's part.

In the meantime, at the end of the results you will find the proposed classes for 1978 Congress. It will be booked through the SAME Holiday Inn. As you heard, I have to deal with what I can arrange and get at a bargain. Mr. Goldman also stated there will be a NEW hall next year and we will have it ALL. In general, all that

Mr. Goldman said and agreed to was carried through, he said we were one of the best groups ever to use the Inn and are more than welcome again in 1978.

So for now I bid you another big THANK YOU and invite you to read on for the results, proposed 1978 classes and events. Any further suggestions should be submitted in writing in January by the 5th, 1978. See you at the 7th MODEL HORSE CONGRESS Aug. 10, 11 & 12 1978.

The Editor,
Marney J. Walerius

1977 Model Horse Congress SHOW RESULTS

The following are the results of Congress '77 Junior Classes. The initials of the exhibitors will be used to identify them. (Key - Cheryl Alston, ca; Debbie Bachrach, db; Donna Feinberg, df; Sarah Harper, sa; Stephanie Hall, sh & Dedie Shield, ds.)

1. Jr. Stallions - 1. Star Struck, ds; 2. Scirrocco, db; 3. SA Grand Slam, sh; 4. Saharaha's Desert Rider, ds; 5. Royal Velvet, sh; 6. Sheik, df; 7. Stone Arc Top Honor, ca; 8. Starwood in Aspen,



SARAH HARPER

Con't. on Next page

db; 9. Stone Arc Lyrehc, ca; 10. Midnight Moon, sh (13 in class).

Jr. Geldings - 1. Blaze on, df; 2. SX First Edition, sh; 3. Crimson Sunset, ds; 4. Bee Whiz, sh; 5. Ginger Snap, ds; 6. SA Spanish Galleon, sh; 7. Terrang O, db; 8. Daddys Pride, db; 9. Captain Courageous, df; 10. Black Jack, sh (11)

Jr. Showmanship w/Hal. - 1. October Man, sh; 2. SA Rose Garden, sh; 3. Blaze on, df; 4. Saharas Desert Prince, df; 5. Pharohs Pride, ds; 6. SA Grand Slam, sh; 7. Amarillo Sunset, sh; 8. Sahara's Desert Rider, ds; 9. Massini, sh; 10. What's Wrong with this Picture, db (12)

Jr. Misc. BREEDS: 1. Donnalita, df; 2. Star Struck, ds; 3. Heeler, sh; 4. SA American Emblem, sh; 5. Daddys Pride, db; 6. Midnight Moon, sh; 7. Captain Courageous, df; 8. SA Spanish Galleon, sh; 9. Stone Arc Casadd, ca; 10. Moon Crystal, ds (13).

Jr. Appaloosa Hal. - 1. Sunset Brandywine, ds; 2. Cinnamon Sunset, ds; 3. SA Rose Garden, sh; 4. Lucky Lady, sh; 5. Apache, sh; 6. Starbuck Rebel, sh; 7. Starwood in Aspen, db; 8. Pick-a-Daisey, db.

Jr. QH/PA - 1. Gee Whiz, sh; 2. Centennial Phase, db; 3. SA Golden Sun, sh; 4. Amarillo Sunset, db; 5. SA Trick or Treat, sh; 6. Firecracker, sh; 7. Beautiful Bronze, df; 8. Commanche Warrior, df; 9. Sunset Brandy wine, ds.

Jr. E.P. Huntseat - 1. Princequillo, db; 2. SA Flash o Fire, sh; 3. Creme de Cocoa, ds; 4. Starwood in Aspen, db; 5. White Lightning, db; 6. StoneArc Gingersnap, ca; 7. SA Rose Garden, sh; 8. Silver Moonlight, ds; 9. Little Lady, sh; 10. Crazy Spots, df (12)



GAIL GREGOR



STEPHANIE HALL

Jr. W.P. - 1. SA Rose Garden, sh; 2. Ginger Snap, ds; 3. Royal Velvet, sh; 4. October Moon, sh; 5. SA Promising Pleasure, sh; 6. Pharohs Pride, ds; 7. Starwood in Aspen, db; 8. Stone Arc Gala, ca; 9. Scirrocco, db; 10. Amarillo Sunset, db (15).

Jr. Mares - 1. Sheba, df; 2. Stone Arc Casadd, ca; 3. Silver Moonlight, ds; 4. Beautiful Bronze, df; 5. Daughters of the Amerca, db; 6. SA Rose Garden, sh; 7. Pharohs Pride, ds; 8. Foxy Lady, sh; 9. Stone Arc Gala, ca; 10. SA Promising Pleasure, sh (12).

Jr. Foals - 1. Smokey, df; 2. SA American Emblem, sh; 3. Chocolate Delight, df; 4. Spotted Sunbeam, db; 5. Stone Arc Sirch, ca; 6. Prairie Lady, sh; 7. Playgirl, sh; 8. Stone Arc Gasca, ca; 9. Appache Feather, ds; 10. SA Trick or Treat, sh (11)

Jr. Arabians - 1. SA Grand Slam, sh; 2. Scirrocco, db; 3. October Man, sh; 4. Sheik, df; 5. Pharohs Pride, ds; 6. Blaze on, df; 7. Shamus, ds; 8. SA Dealers Choice, sh; 9. Saharas Desert Rider, ds; 10. Stone Arc Gala, ca (12)

Jr. Morgan/Pinto - 1. Little Lady, sh; 2. Terrang O, db; 3. Stone Arc Top Honor, ca; 4. SA Cloud Nine, sh; 5. Starwood in Aspen, db; 6. Crazy Spots, df.

Jr. E.P. Saddle/Parkseat - 1. SA Grand Slam, sh; 2. Midnite Moon, sh; 3. Goldtone, ds; 4. Blaze on, df; 5. Shanlus, db; 6. What's Wrong with this picture?, db; 7. Stone Arc Top Honor, ca.

Jr. Trail - 1. Saharas Desert Princess, df; 2. Stone Arc Casadd, ca; 3. SA Dealers Choice, sh; 4. Scirrocco, db; 5. Sarose Garden, sh; 6. Amarillo Sunset, db; 7. Massinni, sh; 8. White Lighting, db; 9. Moonbeam, sh; 10. Starwood in Aspen, db (12)

Jr. Jumping w/Jump - Easy Over, ds; 2. High Noon, df; 3. Big Man, sh; 4. Flash o Fire, sh; 5. Foxy Lady, sh; 6. Taxman, db; 7. Princequillo, db; 8. Stone Arc Ginger Snap, ca; 9. Terrang O, db.

Jr. Harness, 1. Black Magic, ds; 2. Foxy Lady, sh; 3. Silver Vanity, sh; 4. Royal Velvet, sh; 5. Starwood in Aspen, db; 6. Nellie, db; 7. Midnight Moon, sh.

Jr. Costume - 1. SA Dealers Choice, sh; 2. Sharas Desert Rider, ds; 3. Starwood in Aspen, db; 4. Silver Vanity, sh; 5. Daughter of America, db; 6. October Moon, sh; 7. Lucky Lady, sh; 8. White Lighting, db; 9. Gold Money Buddy, sh.

Champion Stallion - Star Struck, Dedie Shields; **Res.** SA Dealers Choice, Sarah Harper. **Champion Mare** - Shara Desert Princess, Donna Feinberg; **Res.** Stone Arc Casadd, Cheryl Alston. **Champion Gelding** - SA First Edition, Sarah Harper; **Res.** - Crimson Sunset, Dedie Shields; **Champion Foal** - Chocolate Delight, Donna Feinbert; **Res.** - Spotted Sunbeam, Debbie Bachrach.

Jr. Grand of the Show - Star Struck, Dedie Shields; **Res.** **Champion of the Show** - SA First Edition, Sarah Harper. **Jr. High Point of the Show** - Sarah Harper, Sunny Acres.

Best Stable Decorations - Jr. Div. - Stephanil Hall, 1st choice; Dedie Shields - 2nd choice; 3. Cheryl Alston - 3rd Choice.



SCOTTY CAMPBELL



BRIAN COOK & CHRIS FORDHAM

Open Division - Jr. & Sr.

(Key - Robin Beal, rb; Elizabeth Bouras, eb; Dana Brackett, dbr; Scotty Campbell, sc; Beth Combs, bc; Deb Dildine, dd; Diane Dowell, ddo; Michele Engler, me; Tina English, te; Gloria Ford, gf; Chris Fordham, cf; Lynn Fraley, lf; D'Arry Frank, df; Paulie Gilmore, pg; Gretchen Graepp, gg; Gail Gregor, ggr; Sue Hanauer, sh; Karen Heinitz, kh; Jean Hejmanowski, jh; Linda Hofecker, lh; Liz Isham, li; Nancy Kehoe, nk; Linda Lessmann, ll; Pam Messman, pm; Bonnie Meyer, bm; Cathy Mosley, cm; Beth Peart, bp; Jeannette Pook, jp; Jobina Rankin, jr; Charmaine Shields, cs; Judy Sturm, js; Julia Wagoner, jw; Linda Walter, lw; Janet Wells, jw; Kathy Wells, kw; Cheryl Williams, cw; Linda Wright, lwr.

Novelty/Original Idea Costume OF - 1. Hannibal Hayes, jp; 2. Galaxie, te; 3. October Man, sh; 4. Fahd, sc; 5. Atair, kh; 6. Logan, jr; 7. Golden Glory, df; 8. Sakr, eb; 9. Blarney, lh; 10. Imperial Crown, cm.

Novelty/Original Idea Costume RR - 1. Manzoura, eb; 2. Apache Flake, jp; 3. Poco War Cat, kw; 4. Jokers Dice, gf; 5. C Blue Diamond, sc; 6. Crest's Classic Bourbon, dd; 7. WC Navia Marija, dd; 8. Saharas Desert Rider, ds; 9. Poco Opal Amber, PM; 10. Sur Shar Khan, kh (A & B 39-63 in classes)

Open Team Harness - 1. Birchwood Canaddee/Penny Arcade, bp; 2. Sterling Silver/? cs; 3. Bicentennial Hitch,

Con't On Next Page



LIZ BOURAS

lf; 4. Bonnie Lady's Memory, sc; 5. Degage, lf; 6. Jabberwackie, df; 7. Sunset Makin Waves, js; 8. Scarlet Roses Te; 9. Sonny's Lady Heir, te; 10. High Style, ddo.

Sr. RR Other Geld. (22) - 1. Danse Flambeaux, bp; 2. Kon Tiki, li; 3. Beer & Skittles, ll; 4. Gabi's Red Star, cw; 5. Gold Jaguar, sc; 6. Sramiga, kh; 7. Gray Fox, cs; 8. Echilon, kh; 9. Imperial Point, me; 10. Backtrack, kh.

Halter Champions:

Sr. OF Foal Ch: Dizzy Drift, Linda Warlight; Res. Snap, Cathy Mosley.

Sr. RR Foal Ch: Shamroch Fantasy, Tina English; Res. Rebel Candu, Beth Peart.

Sr. OF Stall. Ch: Sakr, Liz Bouras; Res. Colorado Starlight, Nancy Kehoe; Sr. RR Stall. Ch: Sahara Rising Sun, Char. Shields; Res. Birchwood Canadet, Beth Peart.

Sr. OF M Champ. Rineanna of Dungguire, Lynn Fraley; Res. Wisana Silver Fare, Kathy Wells; Sr. RR M Champ: Shkota Diamond Tiara, Dana Brackett; Res. Penny Arcade, Beth Peart.

Sr. OF G Champ: Wilson, Liz Isham; Res. Kuryakin, Liz Isham; SR RR G Champ: Rhab Dhul, Judy Sturm; Res. Danse Flambeaux, Beth Peart.



LINDA WALTER

SR RR Arb/Apl G (24) - 1. Rhab Dhul, js; 2. Spotted Bulls Seminole, dbr; 3. El Bey Electra, kh; 4. Desert Storm, kh; 5. Amarna Ibn Sudan, eb; 6. Apache Flake, jp; 7. Copper Caliphso, sh; 8. Unnamed #51, Y.M., kh; 9. App Go Lucky, cs; 10. Sunshines El Valiente, li.

Sr. RR STK Typ. Stil. (27) - 1. Sunset Storm Warning, js; 2. McQue, cf; 3. Cinnabar, kh; 4. Catch the Wind, gg; 5. Poker Chip, cw; 6. Hutchinson, cw; 7. Sur Shar Khan, kh; 8. Lil Starsky Harlowe, pg; 9. Inhachan, pg; 10. Grey Friar, gg.

SR RR Stk Typ. M (32) - 1. Shkota Diamond Tiara, dbr; 2. Nublon Red, cf; 3. Poco Lita, cs; 4. Shauns Painted Diamond, dbr; 5. Shauns Shady Lady, dbr; 6. Diamonds Blue Cloud, kw; 7. Shar Khans Silhouette, te; 8. Snapbars Cocoa Dutchess, lw; 9. Chicabar Cody, kh; 10. Sun Queen, nk.

Sr. RR EG Typ. Stil. - 1 Deputy Marshall, kh; 2. Birchwood Canadet, bp; 3. Shar Khans Supreme Joltan, te; 4. Champion Heritage, gg; 5. Call Me Moonlight, dd; 6. Troubadour, gg; 7. Bregalad, bm; 8. Aur de Oro, ddo; 9. Aspen Sunglow Skidancer, li; 10. Sterling Silver, cs.

Sr. RR Eg Ty M (28) - 1. Valeria, ll; 2. Penny Arcade, bp; 3. Mahogany Rush,



LIZ ISHAM'S DRAFTER

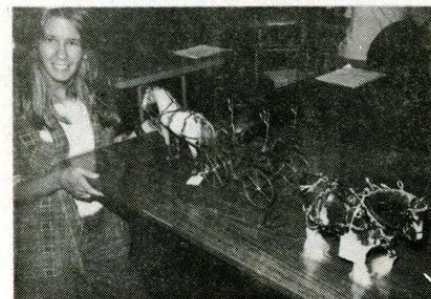
Senior Performance

SR OF Stil. W.P. (31) - 1. Fahd, sc; 2. Grand, lw; 3. Hannibal Hayes, jp; 4. Sakr, eb; 5. Colorado Starlight, nk; 6. Brms Hanover, te; 7. Shamrock, sc; 8. Semoral II, kh; 9. Mr. Shamrock, jw; 10. Royal Diplomat, cs.

Sr. OF M W.P. (31) - 1. Stardust Dreamer, jp; 2. Sunset Little Feather, js; 3. Dziwa, ggr; 4. FW Madrygal, lw; 5. Wintertime, te; 6. Wisana Silver Fare, kw; 7. Aubury, bm; 8. Painted Fire II; 9. Wayward Wind, jw; 10. Cinnamon War Winds, kh.

SR. OF G W.P. - Patchquilt, jp; 2. Sunset Night Wind, js; 3. Deck Record, li; 4. Kuryakin, li; 5. Trail Fox, sc; 6. Battle Flag, lw; 7. Poco Guy, jw; 8. Surry, kh; 9. Calif's Sultan, bm; 10. Domino Al Sabah, kh.

Sr. OF Trail - (34) - 1. Sunset Little Feather, js; 2. Shamrock, sc; 3. Patchquilt, jp; 4. April Fools, kw; 5. Cinnamon War Winds, kh; 6. Fahd, sc; 7. Winsana Silver Fare, kw; 8. Colorado Starlight, nk; 9. Sunset Night Wind, js; 10. Kuryakin, li.



GLORIA FORD



GLENN BRACKETT

SR OF Stil. E.P. (35) - 1. King Kzar, cs; 2. Fionn Maccumhail, lf; 3. Shamroch, sc; 4. Fahd, sc; 5. White Radiance, ddo; 6. 5 Grand, lw; 7. Desert Ransom, kh; 8. Wil O Mar Stonewall, te; 9. Sands of Egypt, jw; 10. Seniorial II, kh.

SR OF M E.P (33) - 1. Sunset Little Feather, js; 2. Cinnamon War Winds, kh; 3. Shakari, kh; 4. Rineanna of Danguarie, lf; 5. FW Madrygal, lw; 6. Stardust Dreamer, jp; 7. Minx, cm; 8. Rustic Ruler, cs; 9. Capricorns Majestic Maiden, ggr; 10. Cameo, ddo.



Con't on Next Page

dd; 4. Ned/Fred, li; 5. Rhab Dhul/Count Grey Mist, js; 6. Seminole Diamond/Diamonds Charo Comanchero, dbr; 7. Konakai/Kon Ziki, li; 8. Sunset Blue Cloud/S. Storm Warning, js; 9. Elkecez/Zaraffic, kh; 10. Azrek/Sharari, kh (21 teams)

Open Barrel Race - 1. C Blue Diamond, sc; 2. For Cee Syntanya, bp; 3. Salt & Pepper, sh; 4. Shawns Painted Diamond, dbr; 5. Overshadow gg; 6. Anastasia, li; 7. Tempicos Excalibar, ggr; 8. Sakr, eb; 9. Rajjela, jhj; 10. Inkachan, pg. (51)

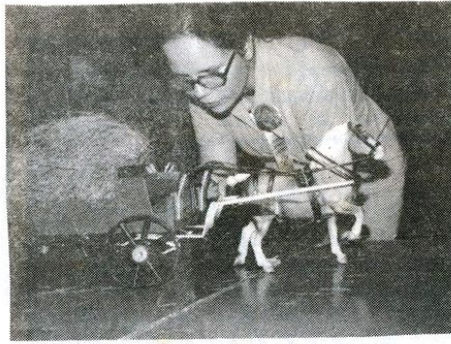
Open Poles - 1. Tribal Matters, kw; 2. Manzoura, eb; 3. C Blue Diamond, sc; 4. Diamond Blue Cloud, kw; 5. Rose Parade, js; 6. Duston Hoof Man, pg; 7. Inhachan, pg; 8. Royaltons Radiance, gf; 9. Sakr, eb; 10. Apache Flake, jp (45)

Open Cutting - 1. For Cee Syntanya, bp; 2. October Man, sh; 3. C. Blue Diamond, sc; 4. Sweet Brandy Wine, ds; 5. Hey Sailor, bp; 6. Mr. Ed, li; 7. Diamonds Charo Comanchero, dbr; 8. White Wine & Roses, jwg; 9. Diamond Blue Cloud, kw; 10. Look What's New, df (40)

Open Cutting - Apache Flake, jp; 2. Sunset Storm Warning, js; 3. Fahd, sc; 4. Bordera Hombrina of Grandlajara, ggr; 5. War Bonnet, kh; 6. Sun Queen, nk; 7. Steeldust, bm; 8. Chicabar Cody, kh; 9. Los Gatues Gaucho, ggr; 10. Smokey Frost, cw (45)



12 GRETCHEN GRAEPP



BONNIE MEYER

Sr. Classes: Halter

Sr. of Apl. Stl. [15] - 1. Rebel Star, ggr; 2. Arzimus, cf; 3. Jokers Vast Fortune, jw; 4. Cayennes Caper, dd; 5. Las Gatos Gaucho, ggr; 6. Nohawk, lh; 7. Firee Carol Stud, cw; 8. Steeldust, bm; 9. Nightwind, cf; 10. Blackwind, cm.

Sr. of Apl. M (22) - 1. Injun Jamboree, cf; 2. Shadow Wind, cf; 3. Leading Lady, te; 4. Painted Fire, li; 5. Sunset Little Feather, js; 6. Moonlight Mist, ddo; 7. Stardust Dreamer, jp; 8. Orions Mariah, ggr; 9. Comencheros Indian Bell, ggr; 10. Wildflower, bm.

Sr. of Arb. Stl. (23) - 1. Sakr, eb; 2. Fahd, sc; 3. Astradell's Rawbird, ggr; 4. Farwi Indraff, lw; 5. King Kzar, cs; 6. King Shahriyan, ggr; 7. Arret the Wanderer, cm; 8. Stardrive, bm; 9.



SANDY SELLERS

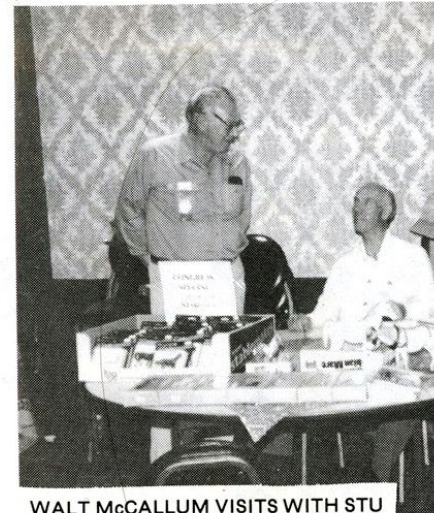
Shamon, rb; 10. Omar Supreme, cf.
Sr. OF Arb. M (25) - 1. Wisla Silver Fame, kw; 2. Spring Star, ddo; 3. Oziwa, ggr; 4. Ronara, lw; 5. Jinah A Tagr, te; 6. Loiseau De Joliel, cf; 7. Shakari, kh; 8. Larasdan, te; 9. Cinnamon War Winds, kh; 10. Lady of Quality, bm.

Sr. OF Spl/Arab G. -(9) - 1. Kuryakin, li; 2. Alcombury Eagle Feather, jw; 3. Applesauce, rb; 4. Domino Al Sabah, kh; 5. The Turk, jh; 6. Dancing Feather, cm; 7. Battle Flag, lw; 8. Maniet El Nazanka, cf; 9. Surrae, kh.

Sr. of Stk Typ STL (41) - 1. Colorado Starlight, nk; 2. Sassy Shenanigans, ggr; 3. Golden Opportunity, bm; 4. Bloody Sundry, cf; 5. Grand, lw; 6. Clyde, ddo; 7. Swaps, cf; 8. Five Card Stud, cw; 9. Redwood Clydesdale, te; 10. Royal Diplomat, cs.

Sr. OF STK Typ M (32) - 1. Nochina, cf; 2. Majestic Princess/Cactus Fruit?, cf; 3. Lady Lightfoot, cm; 4. Wayward Wind, jw; 5. Traj's Treachery, ggr; 6. Lady Carnelian, ggr; 7. Sassy Golden Nugget, cf; 8. Dandy Bon Bobbie, lw; 9. Sady Lady, ddo; 10. Cutters Twister, cf.

Sr. OF Eg. Typ Stl. (46) - 1. Shamrock, sc; 2. White Radiance, ddo; 3. Silky Sullivan, cf; 4. Counterpoint, bm; 5. Wil-O-Mar Stonewall, te; 6. Man O' Wars Aristocrat, ggr; 7. Ethereal, cm; 8. Hopes Gallant Messenger, ggr; 9. Finn Maccumhail, lf; 10. Presgenuine, lw.



WALT McCALLUM VISITS WITH STU BENTLEY

Sr. OF Eg. Typ. M (29) - 1. Rineanna of Dungaure, lf; 2. White Rose Fanchirin, lw; 3. White Lighting, te; 4. Cameo, ddo; 5. Azuree's Golden Goddess, ggr; 6. Ravenswood Lass, gg; 7. Dedicate, te; 9. Pennyroyal, gg; 9. Gallen Rum, bm; 10. Morganette, cm.

Sr. OF Other Geld (23) - 1. Patchquilt, jp; 2. Wilson, li; 3. Trail Fox, sc; 4. Shee Twister King, cf; 5. Billie Bithahee, jw; 6. Deck Record, li; 7. Tradewind, jr; 8. Winchester, cf; 9. Leprechaun, ddo; 10. Calif's Sultan, bm.

Sr. RR Apl Stal. - (31) 1. Joers Dice, gf; 2. Poco Opal Cadet, pm; 3. Easy Devil, jw; 4. Aries Prince, lw; 5. Diamonds Charo Comanchero, dbr; 6. Tribal Matters, kw; 7. Diamond Lad, nk; 8. Navajo Breeze, te; 9. Crest's Rustler Supreme, dd; 10. Devil May Care, jw.



JEANETTE POOK

Sr. RR Apl. M (31) - Middle Forks Scooter, lf; 2. Comanchero Royce, gg; 3. Seminole Queen Diamond, dbr; 4. Poco Frostie Miss, sh; 5. Seminole Diamond, dbr; 6. Poco Potteets Taft, pm; 7. Blue Spotted Minx, cs; 8. Broken Arrow, jw; 9. Rococo Princess, kh; 10. Poco Damium Lass, pm.

Sr. RR Arb Stl. (25) - 1. Mouley El Raisoli, pg; 2. Sahara Rising Sun, cs; 3. Count Grey Mist, js; 4. Ravenswood Steelsheen, gg; 5. Arbashan, kh; 6. Amarna Ibn Halima, eb; 7. Azrek, kh; 8. Traffique, jh; 9. Ibn Taj Amir, kw; 10. Strutt, bp.

Sr. RR Arb M (25) - 1. For Cee Syntanya, bp; 2. Amarna Bint Burkia, eb; 3. Moratanya, bp; 4. Rose Parade, js; 5. Alliage, li; 6. Sharari, kh; 7. Rayseyn, cf; 8. FW Silver Gem; 9. WC Navia Marija, dd; 10. Sahara Sunset, cs.

Con't on Next Page



YOUR EDITOR, MARNEY WALERIUS

Sr OF & RR Jumping W/Jump (52) - 1. Seminole Queen Diamond, db; 2. Smooth Takeoff, cs; 3. Look Again, df; 4. Dedicate, te; 5. Lady Bon Judance, sc; 6. Dust On Hoof Man, pg; 7. C Blue Diamond, sc; 8. Rose Parade, js; 9. Diamond Blue Cloud, kw; 10. For Cee Syntanya, bp.

Sr OF G.E.P. (23) - 1. Ricochet, kh; 2. Patchquilt, jp; 3. Trail Fox, sc; 4. Reo Royal, kh; 5. Surre, kh; 6. Battle Flag, lw; 7. Dream Jammer, lw; 8. Sunset Night wind, js; 9. Domino Al Sabah, kh; 10. Appalachians, kh.

Sr. OF Arb CST (27) - 1. Sakr, eb; 2. Winsana Silver Fare, kw; 3. Fahd, sc; 4. Atair, kh; 5. Domino Al Sabah, kh; 6. White Lighting Pride, ddo; 7. Desert Prince, ggr; 8. Shakari, kh; 9. Lorasdan, te; 10. Baskin Odyssey, jw.

SR OF Ind. CST (18) - 1. Alconbury Eagle Feathers, jw; 2. Sunset Night Wind, js; 3. Sunset Little Feather, js; 4. Hannibal Hayes, jp; 5. Centurian of Pompaii, ggr; 6. Lady Lightfoot, cm; 7. Patchquilt, jp; 8. Stardust Dreams, jp; 9. War Bonnet, kh; 10. Star Gazer, cs.



GENERAL VIEW



GENERAL VIEW



GENERAL VIEW



BONNIE MEYER

SR OF SGL HRN (41) - 1. Fahd, sc; 2. Fred, li; 3. Star Gazer, cs; 4. Stonewalls Seafarer, gg; 5. Sakr, eb; 6. Wil-O-Mar Stonewall, te; 7. Patchquilt, jp; 8. Money Bags, jw; 9. Rineanna of Dunguarie, lf; 10. Painted Fire, ll.



JOBINA RANKIN



DAN & LINDA WRIGHT



MARLA ENOCH & PAULIE GILMORE

CLUB DIRECTORY

Model Horse Shows Journal

Miss Linda Walter
316 S. Brundidge St.,
Troy, Alabama 36081

M.A.H.R.

Model Appaloosa Horse Registry
% Janel Wells
3511 Elaine
Park City, IL 60085

HOACC - horses of Another Color Club

Sandy Crosse
Box 294
Trey nor, IA

HHROC - Hartland/Hagen Renaker Club ONLY

Doris New
103 E Semands,
Conroe, TX 77301

THE INTERNATIONAL MODEL HORSE CLUB & CANADIAN MODEL HORSE CLUB

Elke Hausler
3772 Dollarton Hwy.
North Vancouver, B.C.,
Canada V7G 1A2

INTERNATIONAL MODEL ARABIAN REGISTRY

Mrs. Bette Hatcher
16212 Bellflower Blvd. #29
Bellflower, CA 90706

A.M.C.H.A. - American Model Carriage Horse Association

(Send 1 loose stamp)
MODEL HORSE REVIEW
NATIONAL MODEL HORSE COUNCIL
(For All Breeds)

All 3 of above clubs in care of:
Mrs. Jean Derench
12 Maple Street
Methuen, MA 01844

FLASH

IMHA will be back in operation in June 1978. Do not write before the above date.

Vicki Compau in Las Vegas, Nevada is still grieving over the loss of her horse. She will answer correspondence but it will be slowly so please be patient.

FOR SALE

MODEL HORSES FOR SALE

(Prices include postage and bill of sale)

1. ARABIAN STALLION - Breyer Family - red Chestnut with flashy white markings. Hair M & T. With 10 color photos & Negatives and IMAR Registration Certs. \$14.00
2. ARABIAN FOAL - Breyer Classic, repped dark chestnut, 4 socks Color Neg. and IMAR Registration Cert. \$5.00
3. ARABIAN FOAL - Breyer Family: Needs repainting but in fairly good condition as is. \$1.75.
4. ARABIAN GELDING - Japan 4¾ inch copy of Breyer Family Stallion. Rep. Red. Chestnut. Good color pics and negatives, Registration cert. \$3.50 or \$6.00 for both him & the mare below.
5. ARABIAN MARE - Radeyra, Japan 4¾ inch copy of Breyer Running Mare. Rep. dark chestnut sells with good color photos and negatives, Registration cert. \$3.50 or \$6.00 with the gelding in #4. (Ramah)

Write: Carol Howard, 164 Martin Dr. NE, Sierra Vista, AZ 85635 (Send a 13 cent stamp to be sure the model is being held for you or perhaps been sold so Carol can let you know.)



LINDA LESSMANN



THE ISHAMS



ROBIN BEAL



1977

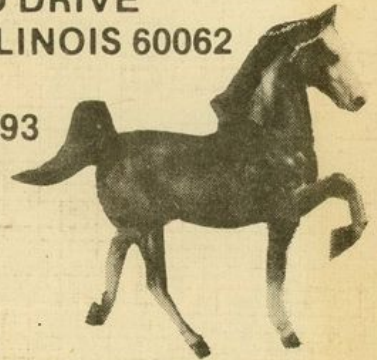
Model Horse Congress ENTRANTS



BENTLEY SALES COMPANY
animal masterpieces

3064 PLUM ISLAND DRIVE
NORTHBROOK, ILLINOIS 60062

PHONE (312) 272-1393



Write for free catalog & order sheet.

We handle Breyer models exclusively.

We carry all items in stock and ship your orders promptly.

You will like our prices and service.

Write for free catalog & order sheet.

We guarantee all models will be received in good condition
or we will make a free replacement.



Special Calves

FIRST CLASS

Do you need a calf for stock horse events???

If so CONTACT MR. BENTLEY AT ONCE. At 1977 Congress he had a SPECIAL run of Breyer calves painted BLACK ANGUS. There are about 25 left. If you need a calf - BUY ONE NOW! That will demonstrate that the Calf is a GOOD SELLER and a reorder to the manufacturer will be assured.