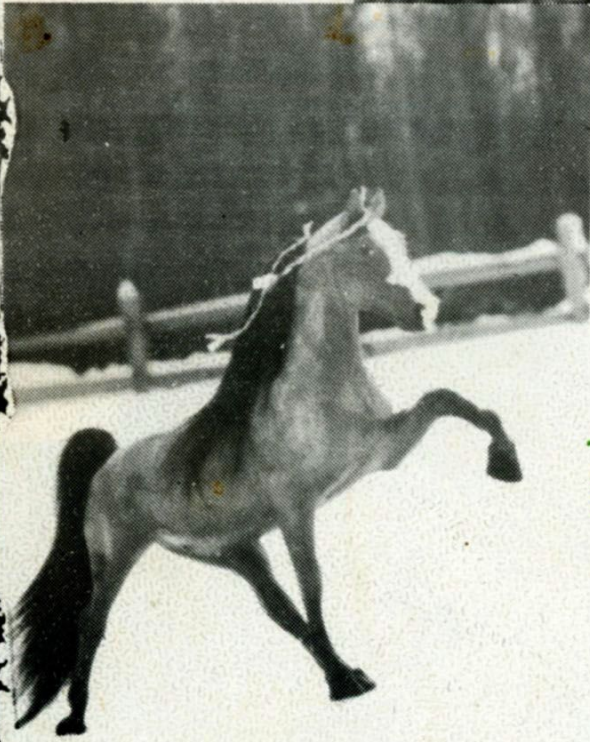
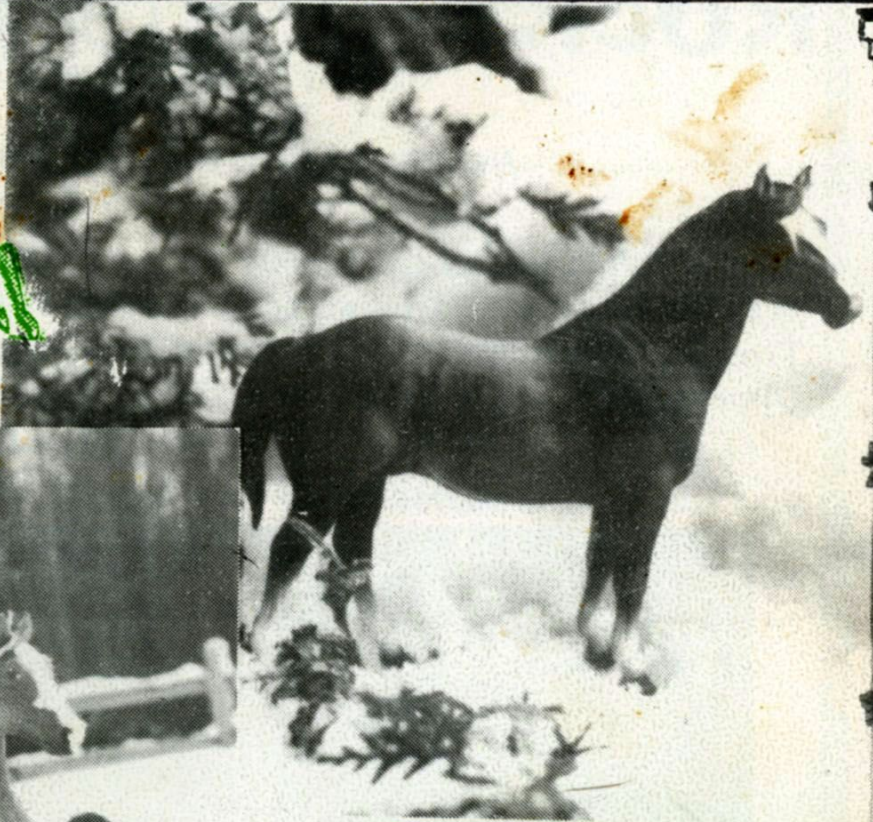


The INTERNATIONAL MODEL HORSE JOURNAL



CHEERS

SEASON'S
GREETINGS

1976



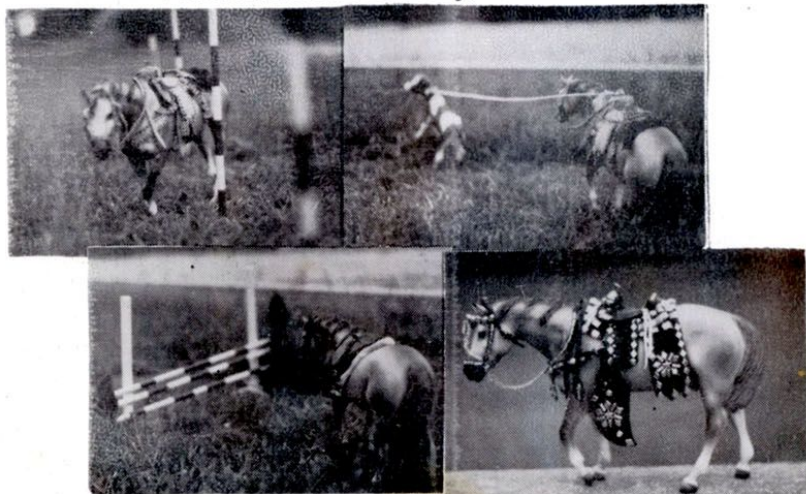
Meg Walker
6604 Brookfield Ave.
Columbia, S.C.
29206

Rocking Ranch

HOME OF KNOWN CHAMPIONS:

In-A-Tiff, Dark Lingo, Royale El Kajib, Mona Morif, Bing Lingo, Ward Sharunini, Tiffany Ann, Sincerlee, Poco's Bucketsful of Trouble, Poco Mass Buck, Poco Gay, Annabell Lee, Chaska, Oppelousas, Troubles Decree, Dejo, Sespe Julie, Phantasia & More.

Pictured below **Poco Gay**, Q. H. mare



Horses for Performance & Halter for sale at all times

Marney Walerius Owner / Manager of **ROCKING MJW RANCH**
252 Drury Lane
Barrington, Illinois 60010
(312)381-2115



Vol. 1, No. 3

December, 1976

TABLE OF CONTENTS

Your Model Horse & Your Camera	2
Mailbox	6
Club Directory and Clubs	7
The Hows, Whys & Wherefores of Model Horses	8
IMAPHC Show Results	9
Bentley Sales	10
Breyer's Discontinued List	11
Didja Hear?	12
New Faces	13
5th Congress Show Results [cont.]	15

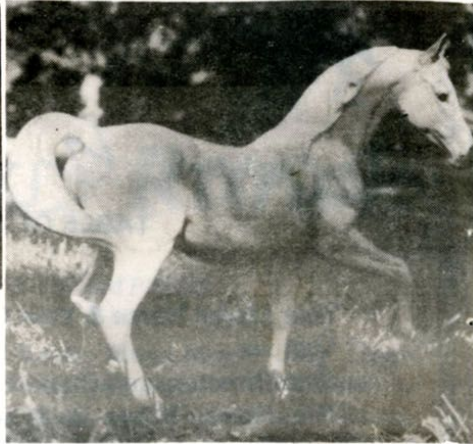
Editor - Marney J. Walerius
Publisher - The Horsemen for All Ages

Contributing Reporters: Cathy Mosley of Springfield, IL; Julie Wagoner of Markham, IL; Liz Isham of Freeport, IL; Marlene Kosanke of Franklin, WI; Deb Dildine of Wausau, WI. and Mr. Bentley of Northbrook, Ill.

Contributing Editors:
Liz Isham - Bloomington, IL; Marlene Kosanke - Franklin, WI; Dana Bracket - St. Charles, MO; Mr. Stu Bentley - Northbrook, IL; Judy Sturm - Marathon, WI.

The International Model Horse Journal is published monthly by the Horsemen for All Ages, 626 East Church Street, Libertyville, Illinois 60048. Subscription rates are \$5.00/year and 50 cents per single copy. Unsolicited manuscripts and photographs are welcome and all will be considered. They must be accompanied by sufficient return postage, and we assume no responsibility for loss or damage thereto. Copyrighted 1976. Written permission must be obtained to reproduce anything printed herein. Advertising rates upon request. Call (312) 362-5555 (days).

YOUR MODEL HORSE AND YOUR CAMERA CAN MAKE YOU WIN



Picture #1 - This model dominates the photo, and the background serves to frame her lighter body. Shadows are also used creatively. (35mm)

How many of you, in simple word association, would equate the word "horse" with "photography"? Chances are that you wouldn't, unless you were a model horse shower. Then the two words are very important to each other, for without photography, there may be no "showing" in the phrase "model horse showing!"

Recognizing this, we can then see the importance of good photography in the world of the model horse. For, while it is the horse that is being judged, a good photo can serve to enhance the model, and many times draw the line between winning and losing. What this article will attempt to do is point out some "basics" in model horse photography, some of the little things that the "old timers" tend to overlook, and the newcomer has not been initiated to yet. You do not necessarily need a sophisticated camera to be able to make a good, show-worthy photo, if you use common sense, patience, and stay within your limitations, your "instamatic" cameras can give beautiful results, in addition to helping keep the "showing costs" down. Several of these tips are especially for those of you who use the simpler cameras, so read them over, and try to utilize them in your next roll of film.

For starters, we should first realize that in model horse showing the key word is "realism". This applies to all phases of the hobby, not just the photo aspect of it. In considering our backgrounds then, this means that we would want to have natural settings, something a live horse would be seen in, simple and uncluttered, since the

model should be the dominant part of the photo. Contrast your colors, a lighter horse shows up better when "framed" by a background of grass and trees, and a darker horse would look better against a lighter background. Your lighting should be soft, and natural, if possible, models generally do not look very nice in bright sunlight as they tend to glare, reflect, or, as in the case of lighter colors, white markings tend to "bleach out", giving the model a deformed look.

Keep in mind that each model is an individual. You can not, and should not use the same angle for each photo, it does your models no service and makes your photos boring. Experiment with your camera angles, as each model has an angle that looks best for it, as determined by its color, position, size, age, breed represented, background and a variety of factors. Try to tie these things together, and your photo will have that put-together, and individual look.

Look for the details in your photo -- are the stirrups straight, bit in the horse's mouth, tack and model clean and free of dust? **Little things can detract from the entire image, and those picky things you did not want to correct (they'll never notice), may cost you your next placing.**

Now, on to the photo technique. Keeping in mind our "realistic" goal, you should coordinate your model, background, and type of photo taken. For example, a barrel racer would not look too realistic racing in knee-high grass, just as a Park horse would not look too believable in the midst of a thick wood in winter. Get down on the model's level when taking the photo, it will present the horse to his best advantage, and help put the background items in their proper perspective. Get as close to the model as you can, as I said, let the model dominate! Judges like to see the animal's feet and legs, so make sure that the grass is a believable length, garden clippers can help achieve this. Keep the camera steady while taking the photo, and always be sure to take good care of your equipment, keeping it free from dust and dirt, and it will help make your photos better, and your camera last longer too.



Picture #3 - This model also dominates, and the backgrounds are proportioned to his size. Instamatic photo.

search around home first, sometimes the most unlikely places can become beautiful from a model's "point of view"!

Good artificial backgrounds can be constructed and used, the key is to



Picture #2 - Simulated background, very well done, subtle, and serves the purpose of enhancing the model (Debby Parry photo - 35 mm)

Have no backyard? Personally, I think that indoor settings should be resorted to under a last resort, with the exception of **good** artificial settings. If your areas around home offer nothing, try a park or country meadow near you, if you are like me, and dislike audiences while working, visit early in the day when the light is good, and people are not likely to visit. But



Picture #4 - Here is a dark horse with light background - see how he shows up? The "trampled" snow, and "peak" in background make a prize winning photo - Instamatic photo (Sue Rowe)

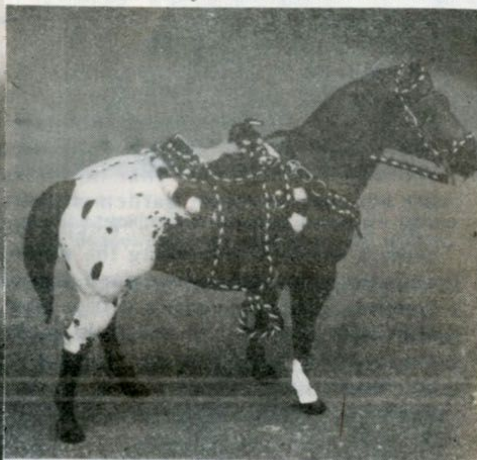
**Your Model Horse, and Your Camera
Can Make a Winning Team!**
by Elizabeth Isham



Picture # 5 - There is a beauty, an art form even in the smallest model. Recognize it, try to bring it out, and your photo will be better for it! (35 mm)

keep them simple, and use ample lighting when photographing your model with them. They can be a diorama type of set-up, or a painting behind the model. When using a painting, keep in mind the subject matter and proportions, also the reflexive quality of the paint, will your flash bounce back off of it? Also be careful not to catch the artist's signature or edge of the background in your photo. I've also used a plain green felt drape, and have achieved very nice results, since the felt has an absorbing quality in relation to the flash. I've seen the best lighting for these settings found outdoors, natural shady light works best with the flash. Also, indoors, with floodlights and flash preferably.

Color film is often the best and most preferred in model photo usage, and mandatory for all halter photos, (performance photos can be black and white). The simpler cameras should always be found with their flash indoors and outdoors in the shade. For the 35mm users this can depend on the limitations of your cameras and film



Picture # 6 - Focusing in on the horse often eliminates the need for a background, plain ones are best! (Marney J. Walerius - 35 mm)

speeds. I would advise the simpler cameras to stick in partly cloudy to sunny areas for their photos, the best time of day that I have found to work in is around 2:00 in the afternoon, and a blue sky always looks nice in your photos.

So this is model horse photography packed into a nutshell. I hope this article may have been of some help to a few of you out there, and I hope that you will keep in mind to go out to your next photo session with confidence, yet care in mind. You can be too sloppy, or too fastidious, and neither one is good. Feel confident, yet careful, take the best photo you can, and be able to analyze it when it comes back. Always work towards improvement, and keep trying, sometimes those "mistakes" are lucky ones. Good Luck!



Picture # 7 - Or, a background can be used with a horse to create a further illusion of realism and depth. (35 mm)

Elizabeth Isham is a Liberal Arts/Pre-Med major at Illinois Wesleyan University. She has been showing for 6 years, and collecting for many more. Always interested in photography, she has actively been taking photos, via "photos by ecami", for 2 years, and will be more than happy to answer any questions on the article.



Picture # 8 - Our "Mistake" photo - how many errors can you see? (35 mm)

ANSWERS TO ALL OF THE PICTURES - Picture # 1 - The background dominates, not the horse, it is not realistic; Picture # 2 - Too many things going on around the horse, too many textures surrounding and overpowering it; Picture # 3 - Lighting is poor. White markings are bleached out; Picture # 4 - Horse is too far away from the camera; Picture # 5 - Colors do not contrast. The horse is hard to see.

CLASSIFIED:

Please send any classified ads to **626 East Church Street, Libertyville, IL 60048.**

PHOTOS by ECAMI.

We will photo with 35 mm film your model to improve your show record. For full details write: **ECAMI**, % Liz Esham, Room 606, 1211 N. Main, Bloomington, IL 61701.

Rocking MJW Ranch Sales has horses you might like to purchase for improving your Model show, and breeding lines. Write today and send a Stamp - we'll be glad to reply. Write - **Rocking MJW Ranch Sales**, Marney J. Walerius, 252 Drury Lane, N.B., Barrington, IL 60010.



**MERRY
CHRISTMAS**

MAILBOX

Dear Editor:

I have received a folder from so far away concerning your lovely horses. I think I was bred and born in a stable. My father was a jockey many years ago and we lived and loved horses. I am sixty four years old but I have grand children all belonging to some sort of pony clubs and are growing up loving the same way(horses). of course. Could you write and let me know if I can get any new horses (collectors of these lovely Breyer Mustangs) where I can get some I would like to get the Mustang #87, Hobo, and old Timer if you could let me know. I have about 30 altogether and I can't seem to get any more here in Australia and could you let me know a bit more about Wild Horse Annie?

Mrs. A. Falcones
51 Harvey St.
Vic Pk., W. Australia 6101

Dear Mrs. Falcones:

I am enclosing a pamphlet put out by Breyer Molding Co. showing their models from 1975 & 1976, and a pamphlet showing a bit about Wild Horse Annie which they printed earlier this year.

I am enclosing the name and address of Bentley Sales Co. here in Illinois. Upon checking he will be more than happy to help you with your needs in W. Australia. Thank you so much for writing. IMHJ is International and you are a great credit!

Dear Ms. Walerius:

I appreciate your letting us know about your Model Horse Congress. Would you let me know when the sixth is scheduled so that we could consider the exhibits as a possible picture spread.

Many thanks for thinking of us.

Sincerely,

Les Woodcock

Asst. to the Editor & Publisher
CLASSIC MAGAZINE

551 Fifth Ave. New York, NY 10017

(Information will be sent to Classic Magazine as soon as the premium and schedule of events are ready.)

Dear Ms. Walerius:

Thank you for your recent letter and the copy of the INTERNATIONAL MODEL HORSE JOURNAL. We enjoyed taking a look at it and learning more about your organization. We will be keeping this copy of the Journal on hand for reference, as we often, times receive requests from readers on model horse information.

We appreciate your thinking of THE WESTERN HORSEMAN, and the best of luck to you and THE JOURNAL.

Mrs. Gwen Komatz
Editorial Secretary
The Western Horseman Magazine
3850 N. Nevada Ave.
Colorado Springs, CO 80933

(The latest Oct. 76 issue will be sent to the Western Horseman as well as this issue.)



RES. CHAMPION PERF GELDING, a "count me appee" OWNED & HELD BY LIZ ISHAM, FREEPORT, ILLINOIS



RES. GRAND CHAMPION OF SHOW, "COUNT GREY MIST" OWNED & HELD BY JUDY A. STURM, MARATHON, WISCONSIN

CLUB DIRECTORY

CLUB DIRECTORY - Please enclose a stamp for reply.

Model Horse World

Miss Jill E. Sackman
326 Shagbark Drive, Rochester, Mich.
48063.

Model Horse Club

Misses Carla Howard & Gayle Nielsen
W 2805 Dell Dr.
Spokane, WA. 99208

I.M.P.R.A. (International Model Pony Registry & Association)

Miss Mary Rudersdorf
Rt. 10, Deacon Hills
Richmond Ky. 40475.

IMHA (International Model Horse Assoc.)

% Simone Smiljanic
3109 N. Kessler Bld.
Indianapolis, IN 46222.

Model Horse Showers Journal

Miss Linda Walter
316 S. Brundidge St., Troy, Alabama
36081.

Clubs:

National Model Cutting Horse Assoc. (NMCHA)

Dues are \$.25/year, any breed that has cutting or horse that can cut is eligible. Each model is registered with the clubs and earns special points for year end championships. Classes included for all breeds, and from Novice to Senior, Hackamore to open. Register of Merit and Superior Horse as well as World Champion Cutting Horse titles can be earned.

For further information about the NMCHA write to NMCHA Chairwoman. Please send self addressed stamped envelope for reply to Dana Brackett 15 San Carlos, St. Charles, MO. 63301.

Pinto/Paint Model Horse Journal (Pi/Pa MHJ).

This journal is published by Dana Brackett of St. Charles, MO. and hosted by Jeanne Eckert owner of the AMPHR but we have written for details so soon as we can we'll outline the club for you. If you would like to get into a Paint/Pinto horse club or read about their doings contact PA/PI MHJ, Dana Brackett 15 San Carlos, St. Charles, MO. 63301. Subscription fees: (Subject to change with change in postage rate and supply costs) \$1.75 (No 6 mo. subscriptions available) Send SASE for reply.

Combined Color Breeds Association (Club for horses of COLOR origin)

Includes activities for Albinos, Appaloosas, Paints, Pintos, Buckskins & Palominos. Registration for any of above horses is \$1.00/yr. Participation is for full or half breed horses. All are welcome. For further details write the clubs owner: CCBA, % Jean R. Derench, 12 Maple Street, Methuen, Mass. 01844.

American Model Paint Horse At Texas, % Judy Jeffers, General Delivery, Iran, Texas 79744.

Send self addressed stamped envelope for reply. No other info available at this time.

THE HOWS, WHYS & WHEREFORES OF MODEL HORSES - or - how I discovered Model Showing and Changed My Life!

When I first discovered that there were people in this world sane (or crazy) enough to have worked out a way to show MODEL horses, I was flabbergasted, thrilled and too anxious to start myself to even wait for my first pictures to be developed. But that was the least of my problems. I had a good stable, with some very good stock, but how to "Break" into showing? The answer: **WRITE!** Write to clubs, to people, to model molding companies, to registries, All Right, now you have your first bulletin and there is a class list for a show, and what are you going to do now? Take Pictures! With your own little Agfa, and hope for the best. Problem #1: Your Agfa only takes decent slides, but the prints are over light and foggy because the film is foreign. Problem #2: Your parents put in a cement patio wiping out the lawn. So you take your models out to college where the lawn is lovely but you get some odd looks from the sunbathers as you drag your model horses, "Just in Case."

Then **THRILLS!** Your first results come in and your "Baby", your little foal has won a championship in his first show. It's a great way to start and now you're hooked for good. Now for the big time. Talk your brother into teaching you how to use his polaroid, invest in a Portrait attachment, spend a whole week looking at the horses in the toy store surrounded by kids that come up to your knees, before you decide to invest in a new Breyer . . . Crawl up in the attic and unearth your old Breyers . . . enter more shows, win some, lose some . . . Name and register your horses (King and Queen just won't do anymore, you have to be original) . . . buy a scrap book . . . and finally you have a place for that name you were saving for the far distant future when you were going to be rich and raise purebred Arabians: **DRA-GONWYCK!**

Now, once you are established, you have to keep up your stock. Here is a list to be recited to anyone who voices doubts about your finances and/or sanity: (NOTE: People with full size horses may disregard, you **LUCKY ONES!**):

Cost of investing in a new horse: a Real one - \$200 and Up - A model - \$.98 and Up (to about \$250 for imports). The Cost of keeping a Horse: A real one - \$30. - \$200. For the Model - Occasional **DUSTING**. The Cost of Showing: A Real one - \$2.00 a class and UP - A Model - After investing in pictures, \$2.00-\$5.00 per show per Stable. The Cost of Transportation: Real Horse - Trailer, stall rent & Feed \$25.00 & Up. For a Model - Cost of current mail \$.13 1st ounce, \$.11 each add'l. half ounce 4-6 pics per stamp!

All right, I'll be the first to admit that there is nothing to compare with a blood and flesh horse. But a flesh and blood horse can only be in one place at a time - right? But your models can be shown at as many shows as you have pictures to send and are being held at the same time. So the advantages far outweigh the disadvantages and when that ribbon comes in the mail for **YOUR** horse, forget the funny looks, the botched film, and the little girl at the riding stable with two live horses. After all, you have a whole stable full. (And yours won't step on you or break your arm or catch **VEE** etc...)

Written by and reprinted with permission from Kari Garaas, Oakland, Ca.

**Subscribe
NOW**

CLUB DIRECTORY CLUB DIRECTORY - Please enclose a stamp for reply.

AMQHA (American Model QH Assoc.)

% Randi Peterson
145 Chestnut Ln., #211
Richmond Hts., Ohio 44143

IMApHc (International Model Appaloosa Horse Club)

% Nancy Kehoe - VP
308 Douglas - Apt. #2
Eveleth, MN 55734

IHRA (International Hagen Renaker Assoc.)

% Marney Walerius
252 Drury Lane, N.B.
Barrington, IL. 60010
For Hagen Renaker China Horses Only.

AMPHR (American Model Paint Horse Registry)

% Jeanne Eckert
317 W. Laurel Rd.
Bellingham, WA. 98225

OCBA (Combined Color Breeds Assoc)

% Jean Derench
12 Maple St.
Methuen, MA 01844

The Jockey Club Registry (JCR)

% Beth Gundlach
17 Ferndale St.
Albany, NY 12208

INTERNATIONAL MODEL APPALOOSA HORSE CLUB SHOW RESULTS

IMApHc ROM & Champions of the Year.

Yosemite - Gelding ROM, Bonnie Sumser; Lady Red Diamond - Mare ROM, Bonnie Sumser; American Pie - Stallion ROM, Candace Evans; Diamond Chaser - Mare ROM, Dana Brackett; Prairie Dawn, Mare ROM, Bonnie Sumser; Witch Queen of New Orleans - Mare ROM, Candace Evans; SLF Siri Sundance - Stallion ROM - Carol Wagner; Kingpin Machado - Stallion ROM, Marney Walerius.

IMApHc Overall 1976 Champions:

Wyandot - Ch. Stallion, Bonnie Sumser; Yosemite - Ch. Gelding, Bonnie Sumser; Kingpin Machado - Ch. Stallion, Marney Walerius; Joktar - Ch. Stallion, L. E.; Witch Queen of New Orleans, Candace Evans; Lady Red Diamond, Ch. Mare, Bonnie Sumser; Prairie Dawn - Ch. Mare - Bonnie Sumser; * Galleon - Ch. Stallion, K. B.; Diamond Chaser - Ch. Mare, Dana Brackett.

Congratulations to all of you 1976 Champions!

OWNERS KEY: Bonnie Sumser - BS; Dana Brackett - DB; Marney Walerius - WM; Carol Wagner - CW; Candace G. Evans - CE, LE - ?.

Across the Editors Desk . . .

I can now welcome everyone who has caught onto the IMHJ and have subscribed. As you will note pictures are our pride and joy. We also aim at bringing you information and interesting articles. There will be news about existing clubs and what they offer. We will also list them so that you can get in touch with them. We'll list stores where models can be found whether Breyer, Beswick, J.O.'s, Old Hartlands, Hagen Renakers . . .

If you have a club why not write and tell us about it so that we can tell others. You can advertise in the classified section for a small amount and if you need something or have something to sell, use it! Send word about your activities if you are active in models and maybe we could use you as a feature Model Horse Hobbist. Tell us all about **you, your models and your family.**

Be watching for the 1977 Breyers, Marguerite Henry's "Stormy," Misty's Foal; Halla, the German Jumping Champion; Elmore Zeal, the Black Stallion in Traditional size; and the fate-stricken, loveable Ruffian in Classic size. As soon as we receive them, we'll have the release photos of these new Breyer additions.

Modelly,
Marney

BENTLEY SALES CO.

The Bentley Sales Company located at 3064 Plum Island Drive, Northbrook, Illinois, has distributed the Breyer line of models since 1969.

The owner of the company, Mr. Stuart Bentley, retired from Sears, Roebuck & Co. in 1968 having served in an executive position with the national merchandising organization.

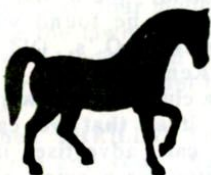
Not being content to retire to a rocking chair, an arrangement was made with Breyer to handle sales directly to the collectors.

The business was started in a small way and has grown along with Breyer into an organization serving collectors in all parts of the world.

Besides the excellence of Breyer products, Mr. Bentley attributes his success to prompt handling of all orders and to carrying the complete Breyer line in stock at all times.



JACI BOWMAN of MILWAUKEE, WIS



BENTLEY SALES COMPANY
animal masterpieces

3064 PLUM ISLAND DRIVE
NORTHBROOK, ILLINOIS 60062

PHONE (312) 272-1393



We handle Breyer models exclusively.

We carry all items in stock and ship your orders promptly.

You will like our prices and service.

We guarantee all models will be received in good condition or we will make a free replacement.

BENTLEY SALES COMPANY

BREYER'S 1977 LIST of DISCONTINUES

The International Model Horse Journal received the following list of **discontinued** products from the Breyer Animal Creations of Chicago.

The 1977 Discontinued models are:
#21 B & W Shetland Pony; #35 Bay Fighting Stallion; #41 Black Pinto Western Pony; #55 Black Pinto Western Horse; #95 Dapple Shire; #96 Honey Sorrel Shire; #102 Palomino Quarter Horse Yearling; #105 Chestnut Canterng Welsh Pony; #110 Smoke Western Prancer; #112 Palomino Western Prancer; #129 Bay Running Stallion; #141 Bay Grazing Mare; #143 Palomino Grazing Mare; #151 Bay Grazing Foal; #166 Buckskin Lying Down Foal; #175 Brown Pinto Indian Pony; #180 Alabaster Rearing Stallion; #185 Bay Rearing Stallion; #190 Black Rucking Horse; #200 White Old Timer; #211 Alabaster Proud

Arabian Stallion; #217 Alabaster Proud Arabian Mare; and #218 Alabaster Proud Arabian Foal.

In the **Stablemates** line those discontinued are: #5001 Saddlebred - Dapple Grey; #5010 Arabian Stallion - Dapple; #5011 Arabian Mare - Dapple; #5037 Morgan Stallion - Chestnut; #5040 Morgan Mare - Chestnut; #5046 Quarter Horse Stallion - Chestnut; #5049 Quarter Horse Mare - Chestnut; #5700 Thoroughbred Lying and Standing Foals - Bay; #5701 Thoroughbred Lying and Standing Foals - Black; #5702 Thoroughbred Lying and Standing Foals - Chestnut.

ATTENTION MODEL HOBIISTS

DO YOU HAVE PHOTOS AND WANT TO ADVERTISE? OUR REASONABLE RATES FIT ANY AND A LL BUDGETS WHY NOT CONTACT US FOR OUR AD RATES? LET'S HEAR FROM YOU!

SUBSCRIPTION APPLICATION BLANK

Complete and mail to:

International Model Horse Journal, 626 E. Church St., Libertyville, IL 60048

Subscription rate for 1 year is \$5.00.

(1) Name _____

Address _____

City _____ State _____ Zip _____

Card to read from: _____

(2) Name _____

Address _____

City _____ State _____ Zip _____

CHINA HOOVES

by Marlene Kosanke

Horse figurines sculpted from various types and forms of china are available to suit any collectors personal taste and pocketbook. Japan offers the Lefton, Josef Original, Napco and Shaffards to name a few. Some brands no longer in production include Lego, Art Mark, Victoria Ceramics, Inarco and others which still circulate among collectors. England also offers a fine selection of Royal Doulton, Cooper Craft and Beswick with the Beswick Connoisseur line being the best as each is individually priced.

Staffordshire and Melba Ware sell most of their line complete with leather tack to suit each breed. Goebel of Germany recently added several horses and a foal that are now in production along with their already popular Shetland pony. Higher quality Goebel horses are also available, though not readily carried by most U.S. shops.

The U.S. has produced what could be called the best in Horse figurines. The Hagen Renaker Pottery Company of California made some 120 different molds since 1949. Each is skillfully crafted down to the last minute detail and is an exact replica of the breed it represents. The creator of most Hagen Renaker horses was Maureen Love. She sculpts exceptional horse figurines known as Maureen Love Originals. Also produced in California were the Poppytails and Freeman McFarlins.

During the late 1940's, in Chicago, a studio known as Morten Studios manufactured several solid glazed ceramic horses.

Imported porcelains never fail to catch a collectors eye. Two of the most popular are the CYBIS and Doris Lindner, the latter sold only in limited editions.

If you have any questions identifying any china models that you may have, send Marlene a Stamp or Self Addressed Stamped envelope I am sure she would be glad to help you identify the model. Her address is Mrs. Marlene Kosanke, 8123 W. Margaret Ln., Franklin, WI 53132.

WHO?

Dana Brackett is fine and up and at 'em again.

Sue Watts made it through the nose repair and now has one more session of facial surgery which was performed last November 27th. Worst part of the whole thing, she reports, is that they kept her awake during the procedure. (Publishers Note - I spoke with **Sue** on Dec. 16th and she is fine, happy, and anxious to get busy taking pictures. We are so happy that she's recuperated so quickly.)

Lis Isham has relocated for school at Southern Illinois. Write her in care of Room 606, 1211 No. Main, Bloomington, IL 61701. She'll answer between studies, I hope!!

DIDJA HEAR ABOUT:

SAD/TRAGIC NOTE: Scotty Campbell lost her real half-Arabian stud colt. The playful youngster jumped another yearling, and she bucked, tossing him backwards. The little guy couldn't make it out of a concussion and was put to rest. Chin up, **Scotty**, we all FEEL FOR YOU!

Pete Stone's (Breyer Molding Co.) mother has been gravely ill after cancer surgery and a coronary, but he reports that she will be fine and up and about very soon.

Rocking MJW Ranch has a new lady in it's barn - "Trouble's Emmalitta" HR's B689 Cutter! She's a daughter of "Trouble" and loves to work. Watch for her - 3 others have been found and are out showing also.



NEW FACES:

Kelly Dewsnup
655 Meeker Street
Delta, Colorado 81416
14 years old

I've been collecting model horses for about two years now and am into Beswicks mainly. I collect many breeds but mainly Arabians. I own one horse, a grade Appaloosa, but I got my first one, a Shetland, at the age of four. I am interested in buying or trading for Beswicks.

Please let us hear from you! All you do is send all information plus photo of yourself to IMHJ, 626 East Church Street, Libertyville, Illinois 60048.

WHERE TO PURCHASE MODEL HORSES TODAY

Ben Franklin 5 & 10
Maine Street
Barrington, Il. 60010

Farm Supply (F & S)
at Lake Zurich, Il. and Grayslake, Il.
plus more locations!

Circus World
Lakehurst Shopping Center
Waukegan, Il.

Mini-Mart
Hwy. 22
Lake Zurich, Il.

Skrudlands Imports
Hwy H
Lake Geneva, Wis.

Blue Ribbon Saddle Shop
Full shelves for Xmas
4475 W. Lake Cook Rd.
Northbrook, Ill.

WINNER OF MODEL HORSE DRAWING

"Most interesting . . ." "How fascinating" "Didn't realize that they made such intricate and perfect copies of real saddles and bridles" - - - just a few of the remarks overheard on Saturday, November 27th, when Marney Walerius, Editor of IMHJ, held a demonstration at the Blue Ribbon Saddle Shop in Northbrook, Illinois.

Held in conjunction with the clinic was a special drawing for a Breyer Quarter Horse complete with saddle and bridle which was won by **Susan Johnson** of 269 Woodlawn, Glencoe, Illinois. Our congratulations to Susan and hope that winning this model will introduce her to the wonderful world of model horse competition and friends.

5th Congress Show Results

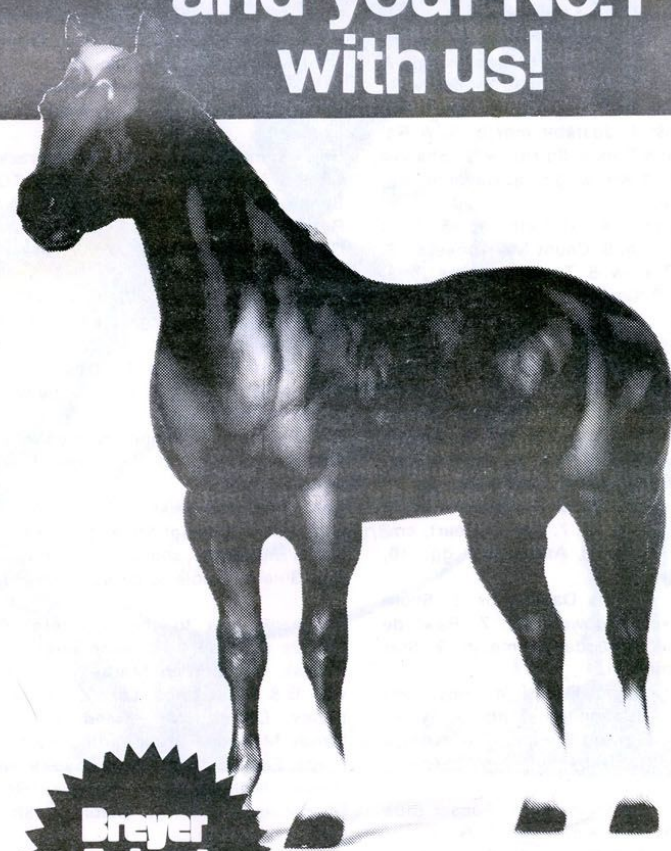
Model Horse Congress Con't.

In the previous issue of the **Journal**, we listed the first three place results of the 5th Centennial Model Horse Congress. In this issue we will list the fourth thru sixth place results. The name initial code for the entrants is as follows: Debbie Bachrach, NY, (DBB); Dana Brackett, MO (DB); Scotty Campbell, IL (SC); Diane Dowell, II (DD); Marla Enoch, WI. (ME/JB) They were shown by Jaci Bowman; Chris Fordham, KN (CF); D'Arry Frank, III (DF); Gretchen Graepp, II (GG); Carol Hankins, IN (CH); Sara Harper, II (SH); Jean Hejmanowski, II (JH); Cathy Mosley, II (CM); Deedie & Charmaine Shields, II (DS/CHS); Bonnie Sumser, OH, (BS); Julie Wagoner, II (JW); Kathy Wells & Sally Wells, NY (KW/SW) Robin Beal, II (RB); Liz Isham, II (LI); Linda Janecki, II, (LJ); Jane Kuk, II, (JK), Judy Sturm, WI (JS); Denise Ewing, II (DE).

Fillies: 4. Sunny Side Up-gg; 5. Smokey, ds; 6. Breezy, jw; 7. Flirtation, jw; 8. Ana Rosa, me/jb; 9. Touch and Go, dbb; 10. Fudge, dd.
Yearling Filly: 4. Azure Geym, cf; 5. Seminoles Spotted Shawl, db; 6. Golden Lancer, dbb; 7. Glory Be Gold, 8. Meadows Gold, lj; 9. Hermie, de; 10. Honey Dew, lj.
Get of Sire: 4. Kings Prophet, me/jb; 5. Charo Comanchero, db; 6. Top Hand, me/jb; 7. Already There, cb; 8. Blackwind, cm; 9. Spotted Rump, de; 10. Wednesday, de.
Produce of Dam: 4. Seminole Diamond, db; 5. Comanche Maiden Diamond, db; 6. Amnesty, df; 7. Arabian Star, cm; 8. Bonnie Jean, de; 9. Ginger, dd; 10. Lady Dakota, bs.
Arabian Costume: 4. Sands of Egypt, jw; 5. White Lightning Pride, dd; 6. Hocus Pocus, jb; 7. Snowfire, jk; 8. Tuzons Misty Roselight, js; 9. Afternoon Delight, li; 10. Count Grey Mist, js.
Parade: 4. Major King, cm; 5. Seminole Diamond, db; 6. Sonnabend, ch; 7. Sunbeams Golden Glow, js; 8. Duster King, jb; 9. Shamrock, js; 10. White Sands, de.
Ponies Halter: 4. 5th Calibre, df; 5. Sweet Nothings, js; 6. Highand Fling, js; 7. Ginger Snap, ds; 8. Star Trip, ds; 9. Pennyroyal, gg; 10. Prairie Fire, gg.
Arabian Stallion: 4. El Daro, sc; 5. Cirque, jh; 6. Ibn Shetan, sc; 7. Baskin Beau, li; 8. Duster King, jb; 9. Baskin Odyssey, jw; 10. Flin High, jh.
Appaloosa Stallions: 4. Alconbury Eagle Feathers, jw; 5. Charo Comanchero, db; 6. Sacramento, bs; 7. for Obvious Reasons, jw; 8. Nashotah, sc; 9. Seminole Ruler, db; 10. Sunspots Dunn II, li.

Open Trail: 4. Sunspot Dunn II, li; 5. Do Not Bend, ch; 6. Jokers Monte, kw; 7. Lassie Mac, sc; 8. Count Grey Mist, js; 9. Waubonsie Warrior, sc; 10. SA; s King of the Wind, sh.
Stallion WP Stock Type: 4. Nashotah, sc; 5. Midnight Blaze, cs; 6. Waubonsie Warrior, sc; 7. Hiawatis Pride, lj; 8. Seminole Ruler, db; 9. Sunspot Dunn II, li; 10. Sacramento, bs.
TB Stallions: 4. Catch Me Later, ch; 5. Shadows on My Mind, jw; 6. Look Again, df; 7. Mysterious Avenger, jb; 8. I'm A Native, jw; 9. Swaps, de; 10. Bandit, cf.
QH Stallions: 4. Say No More, jb; 5. Pow Wow, Jw; 6. Devils Masquerade, li; 7. Eiffel Tower, de; 8. Court Jester, de; 9. Frost Crystal, lj.
Stallion W.P. Light Build: 4. Sunset Blue Moon, js; 5. Royal Major, cf; 6. Troubadour, gg; 7. North Lands Winter Mist, 8. Redcins King Mystery, Me/jb; 9. Muhammed, de; 10. Ibn Shetan, sc.
Barrel Race: 4. Shore Nuff, jw; 5. Tuzons Misty Roselight, js; 6. Wild Gypsy Rose, cm; 7. Sunset Blue Moon, js; 8. Heritage, bs; 9. Flyin High, jh; Jokers Monti, kw.
Huntseat Pl. Stallions: 4. Tejas Red Fox, kw; 5. Swift Eagle, gg; 6. Catch Me Later, ch; 7. Seminole Ruler, db; 8. Charo Comanchero, db; 9. Nashotah, sc; 10. Doc Dakota, bs.
Saddleseat TW/SAD. Stallions: 4. Northlands Winter Mist, cs; 5. Sunbeams Golden Glow, js; 6. JeReviens, sc; 7. Black Handsome, de; 8. Galxy, ds; 9. Flaming Red Ruby, ch; 10. Shamrocks Glory, jw.
Pleasure Driving: 4. Star Trip, ds; 5. Money Bags Jubilee, jw; 6. Waht's His Face, de; 7. Poco War Cat, sw; 8. Waubonsie Warrior, sc; 9. Wayward Amy, sw; 10. Comanche Maiden Diamond, db.
Parkseat Mares/Geld.: 4. Royaltons Roxanne, kw; 5. Afternoon Delight, li; 6. Tuzons Misty Roselight, js; 7. Sonora, me/jb; 8. Joy to the World, ch; 9. Apollo, jb; 10. SA's Mira, sh.
Morgan/Paso Mare/Geld: 4. SA's Mira, sh; 5. Apolla, jb; 6. Joy to the World, ch; 7. Marganette, cm; 8. Montey Vermont, jw; 9. Dark Vexation, rb; 10. Pastordor, de.
Colt Foal: 4. Sand Dune, jw; 5. Diamond War Lord, bs; 6. Snap, cm; 7. Classic Gent, bs; 8. Who Me?, rb; 9. Snippet, jb; 10. SA's Brighty, sh.
Yearling Colts: 4. Charlo, db; 5. Crighty, de; 6. Red Rocket Delight, jb; 7. Pica Pal, de.
Paints: 4. Dark Cloud, rb; 5. Tosto, de; 6. Domino, cf; 7. Hiawakis Pride, lj; 8. Reflections Image, li; 10. Smoke N Fire, li.
Pintos: 4. Cripple Creek, gg; 5. Blue Moon Spors, js; 6. Do Not Bend, ch; 7. Seminole, db; 8. Seminole Ruler, db; 9. Shadow Wind, cf; 10. Sunspots Dunn II, li.

**We're No.1 with
collectors...
and your No.1
with us!**



**Breyer
Animal
Creations**

Division of Breyer Molding Company
222 North Maplewood Avenue

Chicago, Illinois 60612

Indian Costume: 4. Poco War Cat, sw; 5. Jokers Monti, kw; 6. Alconberuy Eagle Feathers, jw; 7. Seminole Daimond, db; 8. Seminole Ruler, db; 9. Shadow Wind, cf; 10. Sunspots Dunn II, li.

Drafter Halter: 4. Kings Prophet, me/jb; 5. Grey Friar, gg; 6. Moray Firth, db; 7. Valiant Prince Charming, jw; 8. Andy, dd; 9. Unnamed Clyde, Mare, jk; 10. Clyde, dd.

Misc. Not Men./Mxd. Breeds: 4. Siri Supreme, jk; 5. 5th Clibre, df; 6. Rose Bud, de; 7. CrossPatch, gg; 8. Unnamed Clyde; 9. Cripple Creek, gg; 10. Sunset Gold Mystery, js.

Arabian Mares: 4. Sonora, me/jb; 5. Tuzons Misty Roselight, js; 6. Solar Storm, ch; 7. Imperial Fascination, jk; 8. Lady Roxanna, jw; 9. Spring Star, dd; 10. Sa's Bright Lance, sh.

Appaloosa Mares: 4. Justabit me/jb; 5. ArRadan, js; 6. Deckers Dancin Spirit, jw; 7. Shadow Wind, cf; 8. Broken Arrow, gg.; 9. Cayeene, gg; 10. Lassie Mac, sc.

Gelding W.P. Open: 4. Al Nath, sc; 5. Poco Troubled Bars me/jb; 6. Count Me Appee, li; 7. Plaudits Rustic Rox, jw; 8. Top Decker me/jb; 9. Sonnabend, ch; 10. Coulter, li.

Arab/App Geld. Hal.: 4. Goldstone, ds; 5. Jokers Monti, kw; 6. Coco Spots, jb; 7. Al Nath, sc; 8. Count Me Appee, li; 9. Ant TQ Nocona, bs; 10. Heritage, bs.

Mares W.P. Stock Type: 4. Deckers Dancin Spirit, jw; 5. Dakota Cobweb, bs; 6. Broken Arrow, gg; 7. Justabit, me/JB; 8. Atomic Star, ds; 9. Solar Sun Beam, cs; 10. Lassie Mac, sc.

TB Mares/Geld. Hal: 4. Sleek Personality, jw; 5. Island Girl, cf; 6. Baza, rb; 7. Candy Heart, cm; 8. Avatar, cm; 9. Royal Assurance, gg; 10. Shamrocks Joy, jw.

QH Mare/Geld.: 4. Lady Dakota, bs; 5. Shore Nuff, jw; 6. Dakota Cobweb, bs; 7. Rawhide Boots, de; 8. Pueblo Sundance, me/jb; 9. Star Baby, jw; 10. Coulter, li.

Mares Wes. Pl. Light Build: 4. Royaltons Roxanne, kw; 5. Superstitutions, db; 6. Alibis Inspiration, jh; 7. Flowing Breeze, lj; 8. Aribica Sharmeer, chs; 9. Star Baby, jw; 10. Wild Gypsy Rose, cm.

Jumping: 4. Look Me Over, df; 5. Sunset Blue Moon, js; 6. Wayward Amy, sw; 7. Royaltons Roxanne, kw; 8. Rebels Revile, de; 9. Don Gato & Nouse, de; 10. Seminole Diamond, db.

Huntseat Ples. Mare & Geld: 4. Jokers Monti, kw; 5. Black Satin, cs; 6. Wayward Amy, sw; 7. BaskinArrow, gg; 8. Prairie Dawn, bs; 9. Look Me Over, df; 10. Comanche Maiden Diamond, db.

Morgan Paso Stal: 4. Woodburys Revnege, jw; 5. Superstition, lj; 6. Sonrosado, dd; 7. DarkVexation, rb; 8. Mr. Shamrock, jw; 9. SA's El Pastor, sh; 10 Capt. Quest, cs.

Parkseat Stall.: 4. Sands of Egypt, jw; 5. Duster King, jb; 6. Mr. Shamrock, jw; 7. Black Handsome, de; 8. El Daro, sc; 9. Ibn Shetan, sc; 10. Sa'yd, jb.

Fine Harness: 4. Show Off Pride, de; 5. Georgie Girl, de; 6. Diamond King, kw; 7. Pot O' Gold, cm; 8. Run Riot, ch; 9. Royaltons Roxanne, kw; 10. Count Grey Mist, js.

Champion Halter Stallion: Roman Fox - Charmain Shields, Il

Res. - Diamond King S - Kathy Wells, NY.

Champion Halter Gelding: Poco Troubled Bars - Marla Enoch/Jaci Bowman, Wi.

Res. - Sonnabend - Carol Hankins, Ind.

Champion Halter Mare: Look Me Over - D'Arry Frank, Ill.

Res. - Seminole Diamond - Dana Brackett, Mo.

Champ. Halter Foal/Yearling: Ant TQ Nacona - Bonnie Sumser, Oh.

Res. Wild Hope - Marla Enoch/J. Bowman, Wi.

Champ. Perf. Stallion: Look Again - D'Arry Frank, Ill.

Res. Count Grey Mist - J. Sturm, Wi.

Champ. Perf. Gelding: Joker's Monti - Kathy Wells, Ny.

Res. Count Me Appee - Liz Isham, Il.

Champ. Perf. Mare: Bonnie Ladys Memory, Scotty Campbell, Il.

Res. Royaltons Roxanne - Kathy Wells, NY.

Grand Champion of the Show: Look Again - D'Arry Frank, Ill.

Res. Count Grey Mist - J. Sturm, Wi.

High Point Stable of Show: Tamarack owned by Marla Enoch, Wi. shown by Jaci Bowman, Wi.

Res. Shields Stable, Charmaine Shields, Il.

A Thank You to the sponsors: Charmaine Shields (also donated some furhides for doorprizes); Mr. Gordon Matters (72) of Madison, Wi.; B & L Newstand, Lake Zurich, Il, Maureen Bailey, Detroit, Mi., Randi Peterson, Ohio, Nancy Mongan, Oregon, Ill., Kathy & Salley Wells, Eden, NY., Scotty Campbell, Mokena, Il. Breyer Molding Co., Rockford/Chicago, Il. Doorprizes and Hi-Pt. Stable of Show Trophy tray.

DID YOU
Subscribe
YET???????

the HORSEMEN

for all ages

A Magazine for People who LOVE Horses - Published by People who UNDERSTAND

75

1976 STALLION Issue



Bulk Rate
U.S. Postage
PAID
Libertyville, Illinois
Permit No. 52

If you like horses and/or are interested in horse events, why not subscribe? Send \$7.50 and your name and address to: **Horsemen for All Ages, 626 East Church Street, Libertyville, Illinois 60048.**



ATTENTION ALL MODEL HORSE ENTHUSIASTS!!!

TO OUR SUBSCRIBERS - - - We have sent you 2 copies of the International Model Horse Journal this month, We truly would appreciate your helping us grow. Please, pass one of the Journals on to a friend who may have an interest in model horses, also:

And, if this is the first copy that you have purchased, why not subscribe? Come and join us - and don't forget to bring your horse!

Sincerely,

The International Model Horse
Journal Staff

ATTENTION ALL MODEL HORSE ENTHUSIASTS!!!